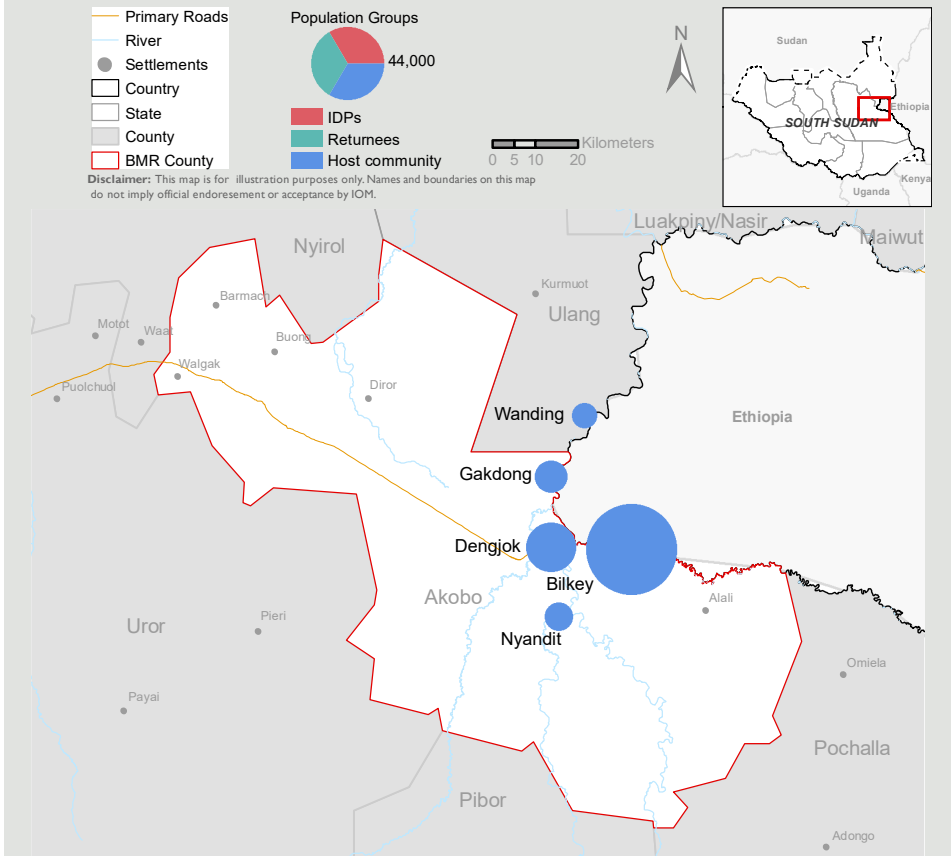
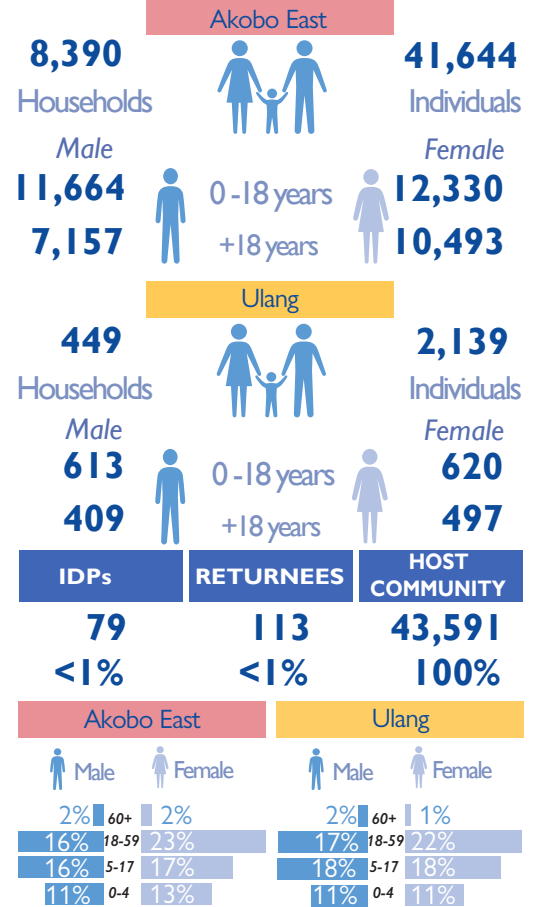


Registration Sites

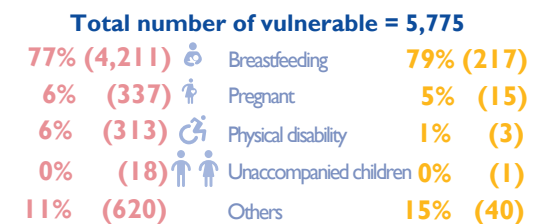
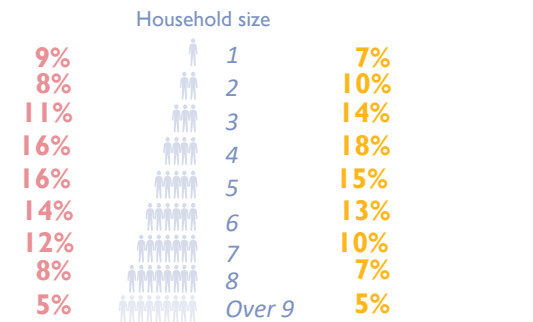


Registered population profile

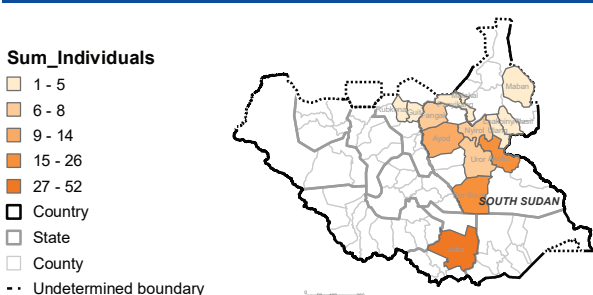


The International Organization for Migration's (IOM) Displacement Tracking Matrix (DTM) in partnership with the World Food Programme (WFP) conducted a biometric registration exercise in Akobo East County, Jonglei and Ulang County, Upper Nile between September 2019 and February 2020 covering four locations in Akobo East (Bilkey, Dengjok, Gakdong, and Nyandit) and one location in Ulang (Wanding). These locations near the Sobat River were primarily accessed via boat. The exercise had to be paused temporarily due to insecurity but resumed soon thereafter.

DTM registered a total of 43,783 individuals (8,839 households) in both counties with 41,644 individuals (8,390 households) registered in Akobo East County and 2,139 individuals (449 households) in Ulang County. Bilkey was home to the highest population with 27,375 registered individuals accounting for 65.7 per cent of the population in Akobo East County. Some 13 per cent of registered individuals were categorized as having one or more vulnerabilities including visual impairments, other physical disadvantages, single parent headed households and serious medical conditions. Mobile teams enabled DTM to reach populations that were otherwise unable to reach registration sites due to physical impairments or due to insecurity.



Counties of habitual residence



- Top four ranked "counties of habitual residence" (n=117)**
- 31% Juba**
 - 16% Akobo**
 - 15% Bor South**
 - 8% Ayod**

According to the data collected during the registration, beneficiaries arrived from various locations in South Sudan and from abroad. The adjacent map represents the habitual residence for 117 out of 43,783 registered individuals. The predominant habitual residence recorded was from Juba, Central Equatoria followed by Akobo East and Bor South, Jonglei.

For further information, contact DTM South Sudan at southsudandtm@iom.int

DTM IS SUPPORTED BY



The names and boundaries on the maps in this document do not imply official endorsement or acceptance by the Government of South Sudan or IOM. This document is for planning purposes only. IOM cannot guarantee that this document is error free and therefore will accept no liability for consequential and indirect damages arising from the use of this product.