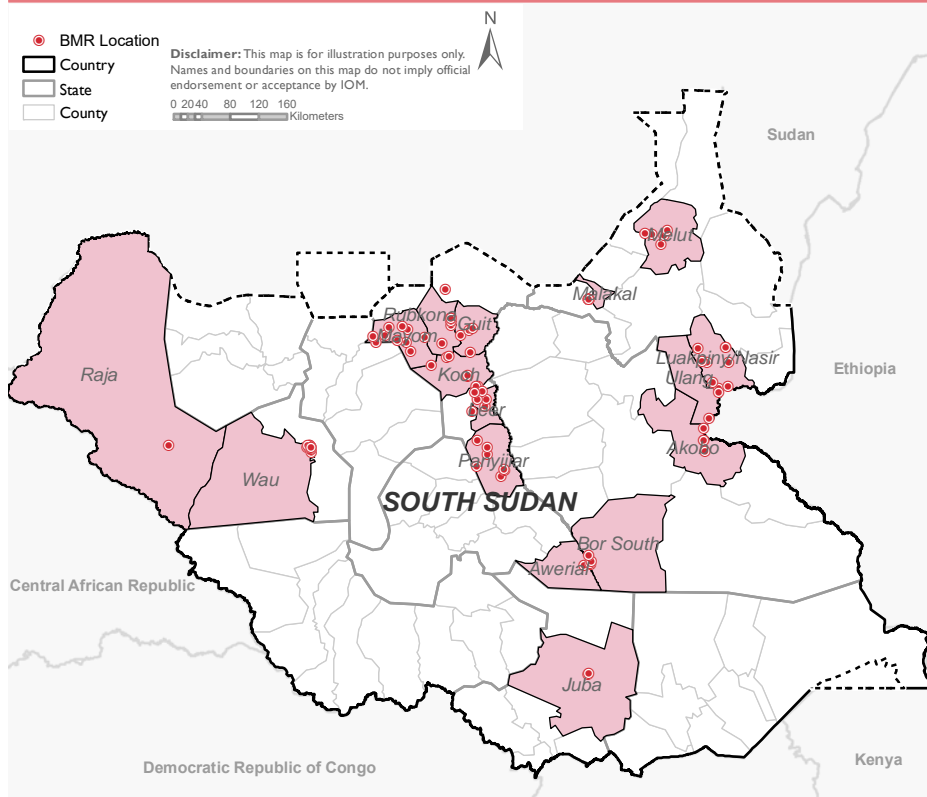


LOCATIONS OF THE ACTIVITIES



Active in DTM BMR database	914,415 Individuals
Targeted for Authentication	348,572 Individuals
Authenticated	328,345 Individuals
Newly Registered	12,603 Individuals
Deactivation	1,191 Individuals
Change of Checkpoint	623 Individuals
Lost Card Replacement	65 Individuals
Merging Households	0 Individuals
De-Registration	12 Individuals

County	Number of locations	Authenticated	Newly registered	Deactivation
Akobo	1		1,477	
Bor	1	1,893		
Guit	4	9,905		
Juba	2	28,681		122
Leer	1		11,126	
Malakal	1	22,500		
Melut	5	20,931		
Rubkona	7	172,360		1,046
Wau	8	72,075		23
Total	30	328,345	12,603	1,191

IOM's biometric registration system has been active since 2014, with 914,415 beneficiaries active in its database to date, out of which 56 per cent (512,287 individuals) are female; and 61 per cent (558,152 individuals) are under 18 years old. Since August 2018, IOM and the World Food Programme (WFP) are collaborating on the project "Enhancing targeted food distribution through biometric data management" seeking to contribute to increased food security throughout South Sudan. Under this collaboration, IOM is responsible for checking the eligibility of households receiving assistance through fingerprint authentication at selected distribution sites. Those beneficiaries whose households do not retrieve their food assistance in three consecutive distributions are assumed to no longer be present in the location and subsequently become deactivated. As a result, fluctuations in registered beneficiary numbers can be observed on an ongoing basis. **Biometric registration, complemented through regular authentication, enhances beneficiary targeting, avoiding duplications through fingerprint scanning and ensuring that the assistance reaches the intended beneficiaries.**

Biometric maintenance work is supported by a variety of donors, including DFID, ECHO and USAID alongside funds received from WFP.

DEFINITIONS

Active in DTM BMR database	Number of individuals registered and verified in the BMR database
Authenticated	Number of beneficiaries reached through WFP GFD authentication
Newly Registered	Number of individuals who were newly registered, i.e. new entries into the system
Deactivation	Number of beneficiaries who missed 3 consecutive food distributions and have been deactivated from the database system
Change of Checkpoint	Number of individuals for whom the checkpoint (registration location) was changed, e.g. from Bentiu PoC to Nhialdu
Lost Card Replacement	Number of individuals who were assisted by replacing lost cards
Merging Households	Number of beneficiaries who wish to be joined with another family, i.e. merged into one household with a single beneficiary card
De-Registration	As a result of a relocation/facilitated returns or other movement out of the site.