



**SITUATION OVERVIEW:** Deos-Tinputz experienced a King Tide at around 2000Hrs on 03 January 2020, leading to the displacement of the local community members who fled to higher ground for safety. The displaced population cleared the land identified for temporary evacuation, and erected makeshift shelters prior to receiving tarpaulins from the Papua New Guinea Red Cross Society (PNGRCS). They also received water containers from the International Organization for Migration (IOM) and Bougainville Disaster & Climate Change Office. This site profile presents main findings from the assessment jointly conducted by PNGRCS, Save the Children and IOM at the request of the Bougainville Disaster & Climate Change Office.

### DISPLACEMENT



**181** Individuals displaced.



**37** Households (HHs) displaced.



**Tarpaulins** were the main form of temporary shelter for the displaced population.

*During the time of the assessment (09-Jan-20), the displaced population requested for information on: Access to services, safety and security, relief assistance (food, water containers, hygiene kits, blankets and tarpaulins and mosquito nets), and early warning systems.*

## ASSESSMENT FINDINGS

### SITE DETAILS

Site Duration: *Short term*

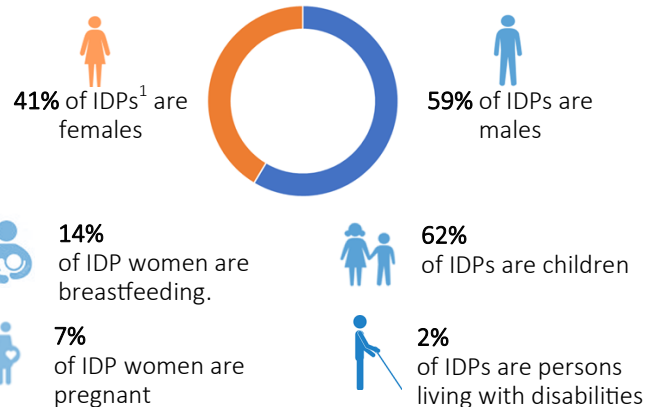
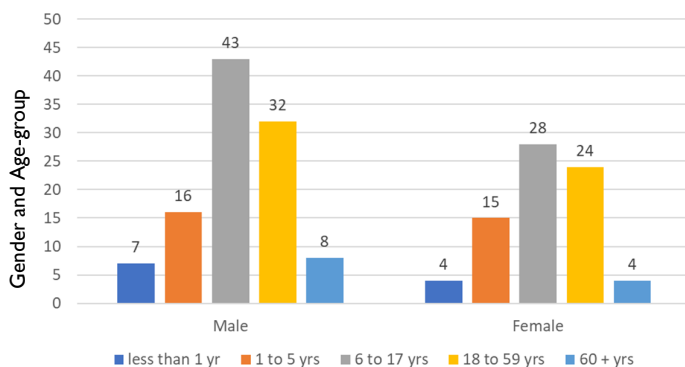
Registration activity: *Yes — Government*

Management Committee/Agency/Authority on site: *Yes — Government.*

Site Details: *Panakara/ Deos site, Iris Ward, Taonita Tinputz Local Level Government, Tinputz District.*

Accessibility and communication: *Site is accessible by vehicle and there is mobile phone network coverage on site.*

## DEMOGRAPHICS AND PARTICULARLY VULNERABLE GROUPS



## SECTORS



### Water, Sanitation and Hygiene

Drinking water: *Creeks (Onsite > 20 mins walk 1-way).*

Functioning toilets: *0. IDPs resorting to open defecation.*

Gender-segregated bathing facilities: *No.*



### Food and Nutrition

Frequency of food distribution: *Never.*

Nutrition supplements available for children, and lactating and/or pregnant women: *No.*



### Health

Available health services near site: *Yes (< 5km).*

Health problems reported on site: *No.*



### Shelter

Type of shelter being used: *Tarpaulins and makeshift shelters.*



### Education

Access to education facilities: *Schools (< 5km) and were closed/ students on holiday during the time of the assessment.*



### Protection

Security provide on site: *Yes.*

Security incidents reported on site: *No.*

Referral mechanisms available for survivors of Gender-Based Violence: *Unknown.*

Lighting to majority of communal points on site: *Yes, there is lighting but it is NOT adequate.*

<sup>1</sup> Internally Displaced Persons

