








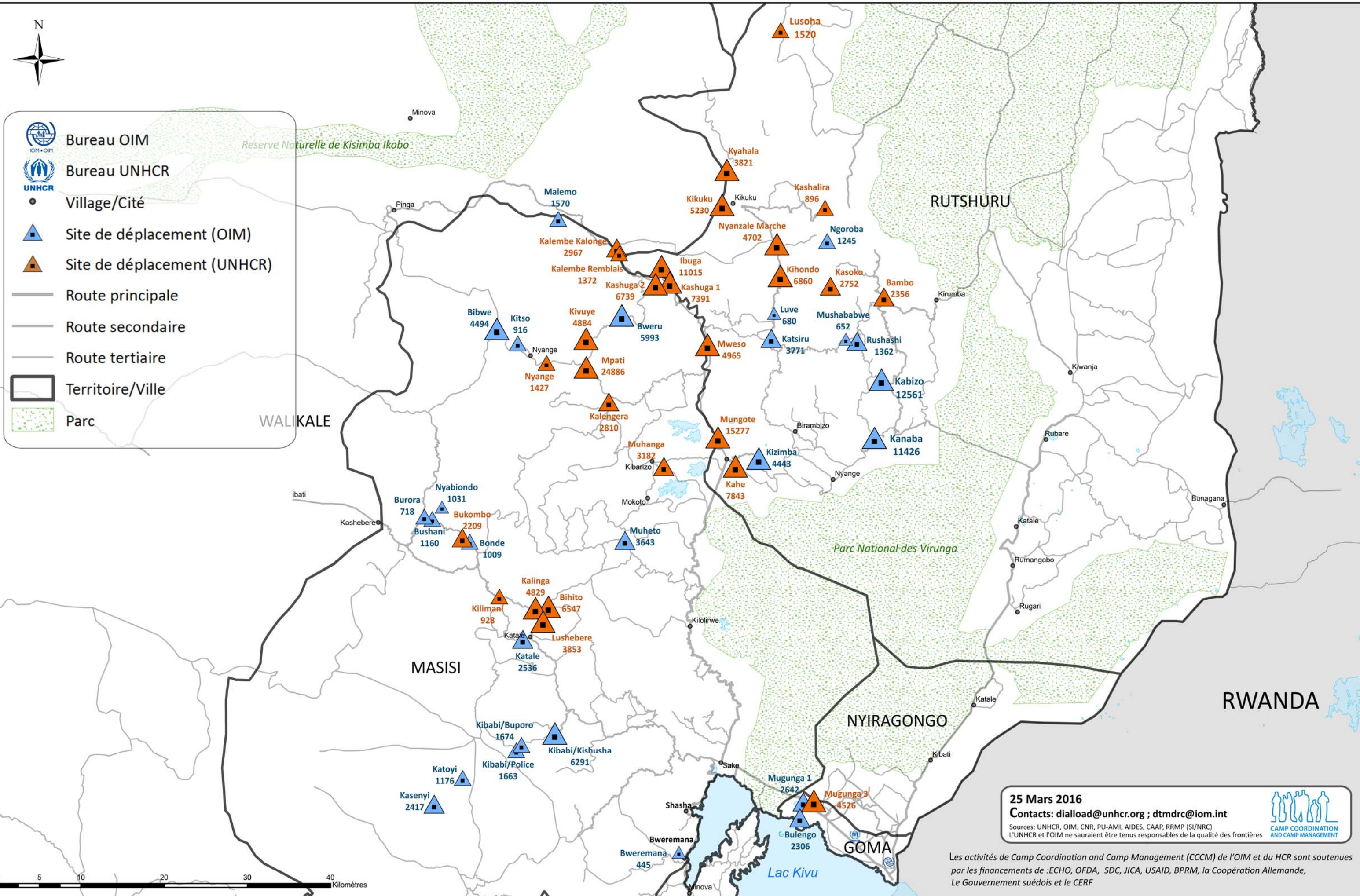




-  Bureau OIM
-  Bureau UNHCR
-  Village/Cité
-  Site de déplacement (OIM)
-  Site de déplacement (UNHCR)
-  Route principale
-  Route secondaire
-  Route tertiaire
-  Territoire/Ville
-  Parc



**25 Mars 2016**  
 Contacts: [dialload@unhcr.org](mailto:dialload@unhcr.org) ; [dtmdrc@iom.int](mailto:dtmdrc@iom.int)  
 Sources: UNHCR, OIM, CNR, PU-AMI, AIDES, CAAP, RRMP (SI/NRC)  
 L'UNHCR et l'OIM ne sauraient être tenus responsables de la qualité des frontières



Les activités de Camp Coordination and Camp Management (CCCM) de l'OIM et du HCR sont soutenues par les financements de : ECHO, OFDA, SDC, JICA, USAID, BPRM, la Coopération Allemande, Le Gouvernement suédois et le CERF