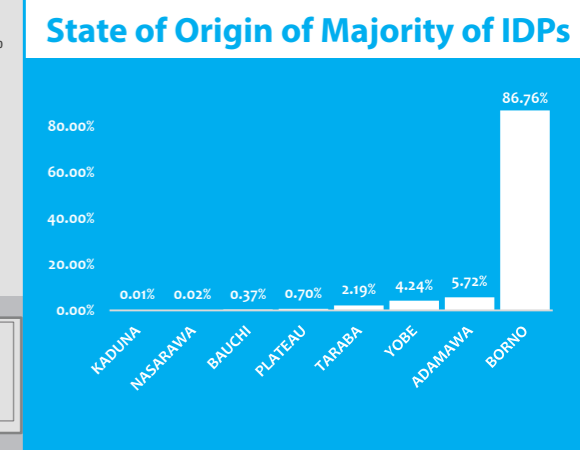
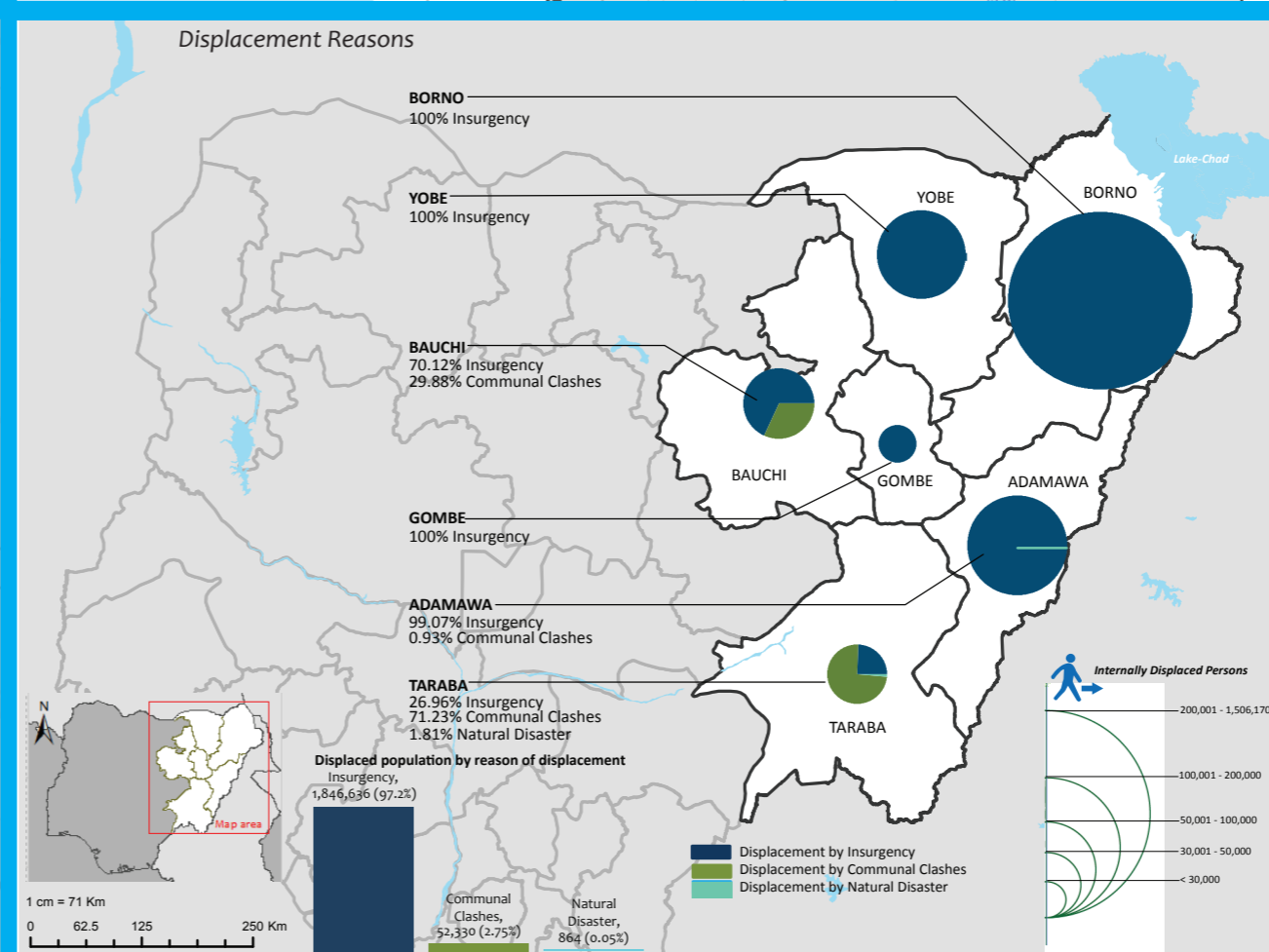
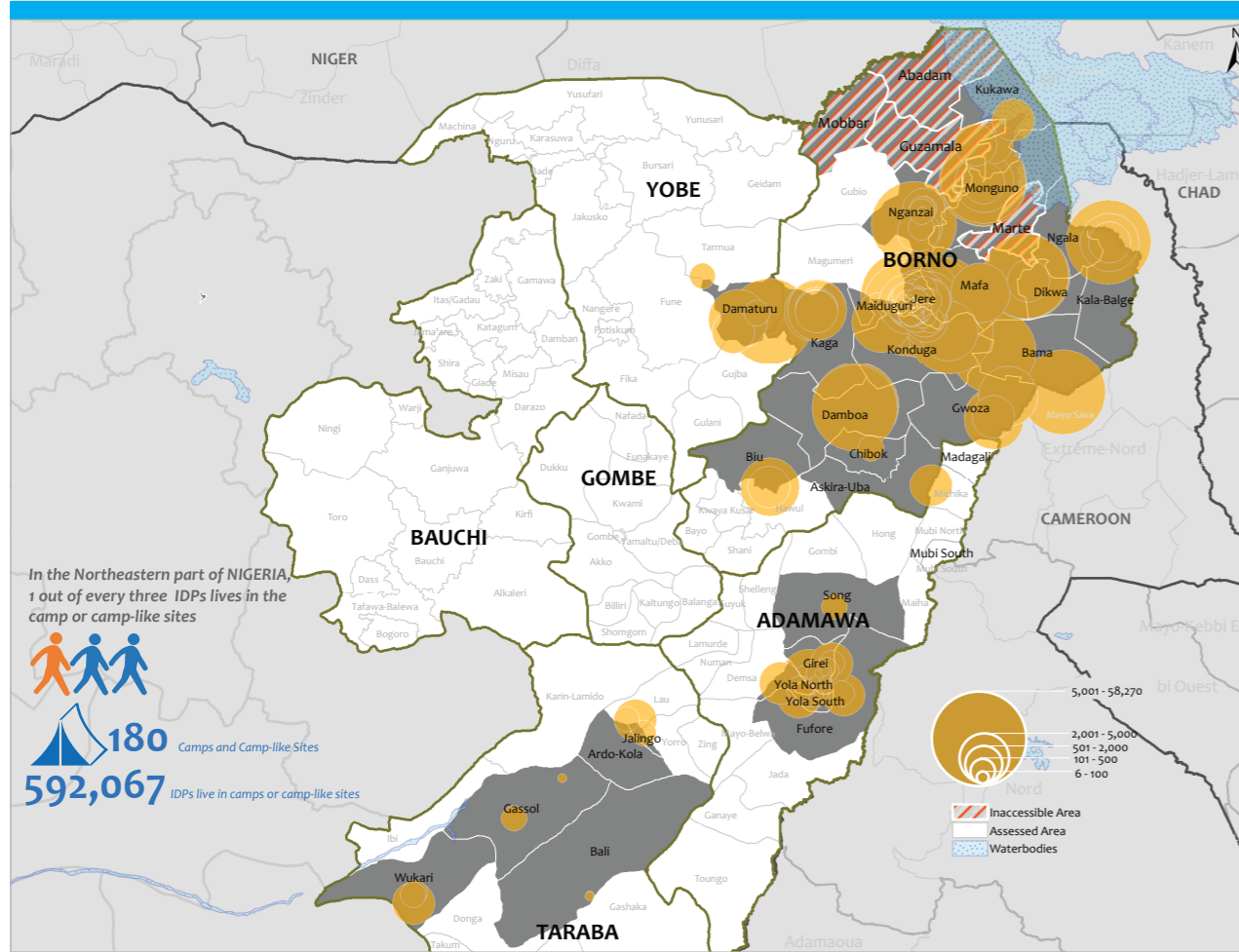
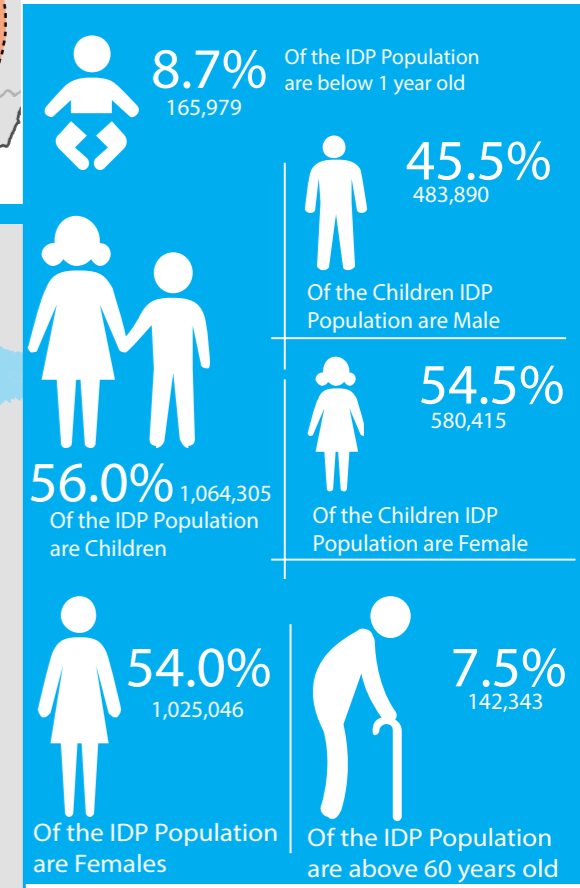


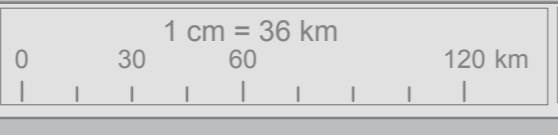
IOM manages the Displacement Tracking Matrix (DTM) in Nigeria and other countries around the world to support humanitarian communities with data on displacement and mobility. This information management product determines the status, locations, and needs of people displaced by the ongoing conflict in northeast Nigeria. As of January 25, 2017, the DTM has identified **1,899,830 IDPs (337,353 households)** across Adamawa, Bauchi, Borno, Gombe, Taraba, and Yobe states. This represents an increase from 1,770,444 individuals in Round XIII, reflecting the expanding terrain the DTM covers as a result of relative improvements in security and access. Assessments were carried out from the 19th December to 25th of January, 2017. Other key findings include:

- Largest IDP populations are in Borno, Adamawa and Yobe.
- 97.2% of the IDPs were displaced because of the Boko Haram conflict.
- 1,099,509 returnees from within and outside Nigeria in comparison to 1,039,267 in DTM XIII
- 56.5% of IDPs at sites surveyed cite food as their greatest unmet need, a decrease from 66% in round XIII. Non-food items, like blanket are the second in demand at 18% followed by shelter.

Population Demographics



DISCLAIMER: The depiction and use of boundaries, geographic names, and related data shown on maps are not warranted to be error free nor do they imply judgment on the legal status of any territory, or any endorsement or acceptance of such boundaries by IOM.



SOURCE: IOM DTM Nigeria
DATE: January 2017

FEEDBACK:
KWENIN Henry <khwenin@iom.int>
Mobile: +2349038852524