

# WEEKLY DISPLACEMENT SNAPSHOT (10)

14 Nov 2023 | Displacement Data Reporting Date: 8 November 2023 | Mixed Cross-Border Movement Reporting Date: 13 November 2023



**(213) DAYS**  
From the start of the conflict

**4,955,538**  
Displaced Individuals ↑ 65,922

**986,267**  
IDP households ↑ 12,823

**1,362,990**  
Mixed Cross-Border Movement ↑ 58,962

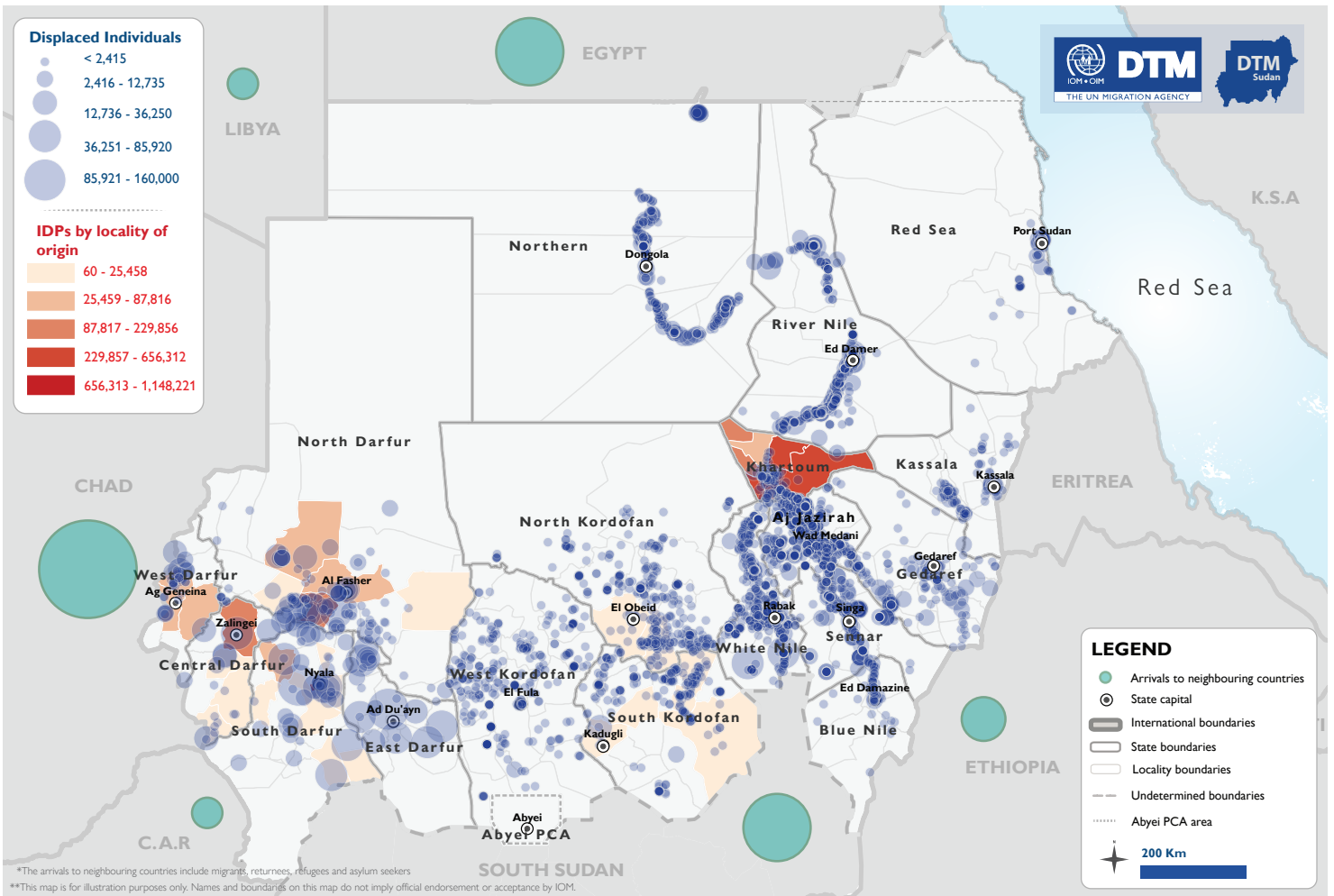
## Overview

From 15 April 2023, armed clashes erupted between the Sudanese Armed Forces (SAF) and the Rapid Support Forces (RSF). As a result of the military clashes, DTM Sudan estimates that 4,955,538 Individuals (986,267 Households) have been recently internally displaced. The IDP caseload has been observed in 5,312 locations across all of Sudan's 18 states.\*

The highest proportions of IDPs have been observed in River Nile (11.98%), South Darfur (11.91%), East Darfur (10.87%), Aj Jazirah (8.54%), White Nile (8.52%), North Darfur (7.64%), and Northern (7.38%). Field teams report that the IDPs observed were originally displaced from eight states. The majority (3,358,048 IDPs, 67.76%) have been reportedly displaced from Khartoum state; followed by South Darfur (15.35%), North Darfur (8.14%), Central Darfur (3.81%), West Darfur (3.74%), South Kordofan (0.67%), North Kordofan (0.52%), and Aj Jazirah (0.01%).

DTM Sudan also estimates that approximately 2.36% of the IDP caseload are non-Sudanese nationals.\*\*

In addition to the internal displacement, the conflict in Sudan has caused the Mixed Cross-Border Movements of 476,811 individuals into neighbouring countries namely Egypt, Libya, Chad, Central African Republic, South Sudan and Ethiopia. 66% of arrivals tracked in those countries were Sudanese nationals and 34% estimated foreign nationals and returnees. The majority of arrivals were reported in Egypt (43.1%), Chad (26.3%), and South Sudan (19%). This product provides a brief snapshot of ongoing displacement across Sudan post-15 April 2023. For more granular information on the humanitarian and displacement context, please see DTM Sudan's [DTM's Monthly Displacement Overview 02](#).



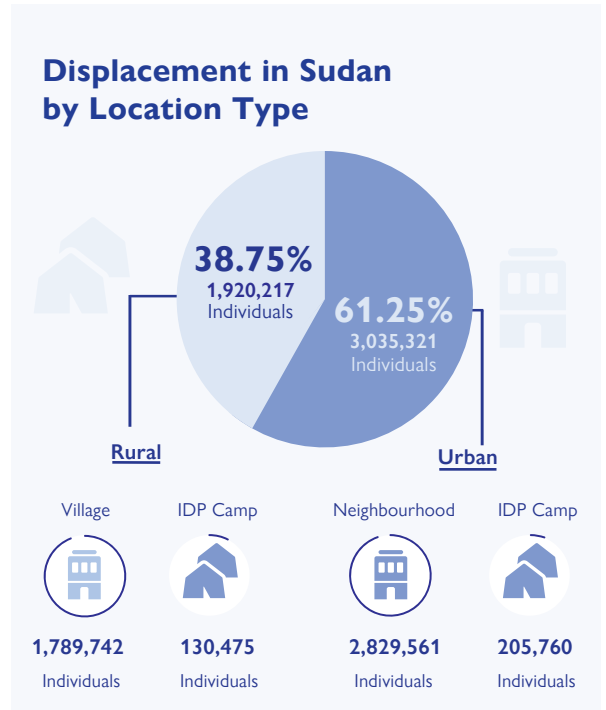
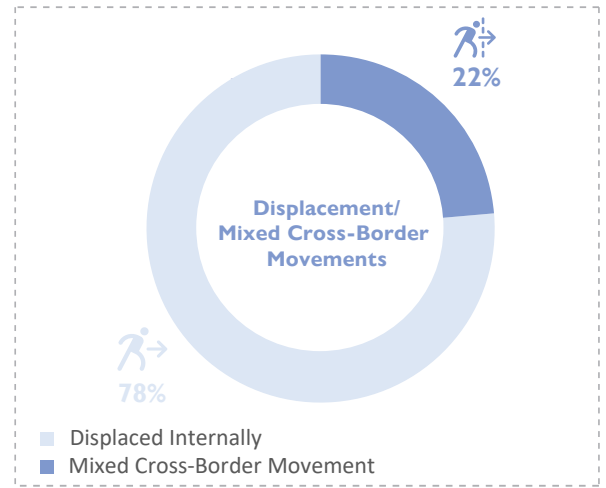
Map 1: Displacement across Sudan and into neighbouring countries since 15 April 2023.

\*The data from many locations has been gathered with the co-ordination of the Humanitarian Aid Commission.

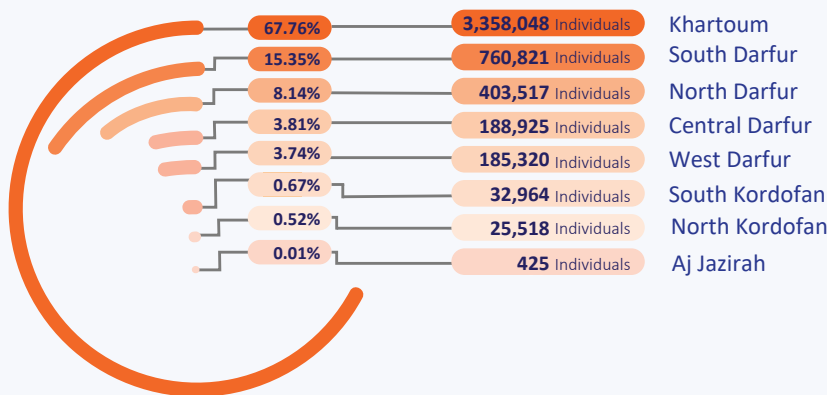
\*\*Field teams collect information on the displacement of foreign nationals in Sudan regardless of whether those individuals have sought international protection or not. Due to the ongoing operational limitations, DTM is currently unable to distinguish between those who have sought asylum and are registered as refugee and those who are not.

States of Displacement	Snapshot09 7-Nov-2023	Snapshot10 14-Nov-2023	Difference	% Total IDPs	Number of locations
Aj Jazirah	406,936	423,069	16,133 ↑	8.54%	1,245
Blue Nile	54,801	55,122	321 ↑	1.11%	93
Central Darfur	296,565	297,065	500 ↑	5.99%	19
East Darfur	538,130	538,630	500 ↑	10.87%	20
Gedaref	273,021	274,601	1,580 ↑	5.54%	230
Kassala	112,302	112,627	325 ↑	2.27%	149
Khartoum	62,785	50,498	12,287 ↓	1.02%	70
North Darfur	349,208	378,708	29,500 ↑	7.64%	92
North Kordofan	109,369	110,156	787 ↑	2.22%	403
Northern	364,541	365,688	1,147 ↑	7.38%	285
Red Sea	124,910	127,222	2,312 ↑	2.57%	114
River Nile	581,958	593,888	11,930 ↑	11.98%	669
Sennar	334,934	337,788	2,854 ↑	6.82%	230
South Darfur	586,518	590,193	3,675 ↑	11.91%	39
South Kordofan	96,819	97,626	807 ↑	1.98%	338
West Darfur	118,575	117,405	1,170 ↓	2.37%	32
West Kordofan	59,227	62,826	3,599 ↑	1.27%	408
White Nile	419,017	422,426	3,409 ↑	8.52%	876
<b>Total</b>	<b>4,889,616</b>	<b>4,955,538</b>	<b>65,922</b>	<b>100.00%</b>	<b>5,312</b>

Table 1: Overview of displacement by state



## States of Origin



**Disclaimer:** DTM Sudan is a suite of methodological tools which aims to track and monitor displacement. DTM collects primary data, with a focus on providing best estimates for support of the wider humanitarian community. DTM Sudan notes that military clashes remain continuous in many areas across Sudan. As such, DTM is currently collecting data through a dual combination of face-to-face and remote interviews with key informants across its network. Data on flows into neighbouring countries is based on available information from DTM flow monitoring networks and secondary sources. Figures should be treated as preliminary findings only and are subject to change via future verification exercises.

## Shelter Categories (by households)

States	Camps	Host Communities	Rented Accommodations	Improvised / Critical Shelters	Schools or Other Public Buildings	Open Area Informal Settlements
Aj Jazirah 81,865	-	62.40% 51,083	5.87% 4,804	0.08% 65	29.41% 24,076	2.24% 1,837
Blue Nile 11,016	-	64.29% 7,082	35.71% 3,934	-	-	-
Central Darfur 59,413	13.98% 8,306	34.75% 20,650	-	-	9.43% 5,600	41.84% 24,857
East Darfur 107,706	0.41% 444	91.78% 98,848	2.25% 2,426	-	4.11% 4,428	1.45% 1,560
Gedaref 54,694	2.66% 1,457	71.14% 38,911	21.52% 11,772	-	4.66% 2,551	0.02% 3
Kassala 22,532	-	75.25% 16,955	21.58% 4,863	-	1.91% 430	1.26% 284
Khartoum 9,900	-	64.97% 6,432	31.22% 3,091	-	3.81% 377	-
North Darfur 75,711	20.66% 15,644	41.33% 31,288	-	0.06% 44	8.79% 6,653	29.16% 22,082
North Kordofan 21,573	-	94.09% 20,298	0.45% 96	0.63% 136	4.51% 973	0.32% 70
Northern 73,545	-	82.18% 60,437	6.21% 4,569	-	11.61% 8,539	-
Red Sea 25,455	0.39% 100	50.95% 12,970	29.98% 7,632	0.09% 23	15.41% 3,922	3.18% 808
River Nile 118,637	-	75.39% 89,446	17.50% 20,758	0.21% 255	5.59% 6,637	1.31% 1,541
Sennar 67,441	-	78.57% 52,990	18.29% 12,336	-	2.24% 1,508	0.90% 607
South Darfur 118,037	20.85% 24,614	40.26% 47,523	-	1.87% 2,210	12.66% 14,942	24.36% 28,748
South Kordofan 19,102	-	93.14% 17,791	0.27% 52	-	6.38% 1,219	0.21% 40
West Darfur 23,481	-	47.11% 11,061	-	1.28% 300	42.88% 10,069	8.73% 2,051
West Kordofan 12,212	-	96.90% 11,833	1.31% 160	-	0.83% 101	0.96% 118
White Nile 83,947	19.99% 16,782	59.90% 50,286	8.91% 7,481	-	10.39% 8,722	0.81% 676
<b>GRAND TOTAL</b>	<b>6.83%</b> <b>67,347</b>	<b>65.49%</b> <b>645,884</b>	<b>8.51%</b> <b>83,974</b>	<b>0.31%</b> <b>3,033</b>	<b>10.21%</b> <b>100,747</b>	<b>8.65%</b> <b>85,282</b>

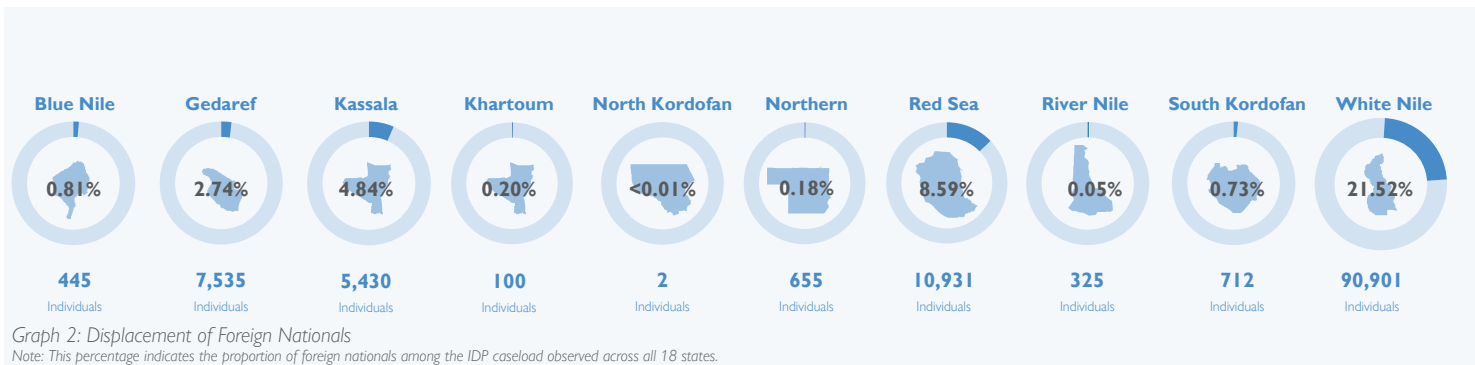
**Total Households: 986,267**

## Displacement of Foreign Nationals within Sudan


 **117,036** ..... **2.36%**<sup>1</sup>  
individuals

From the total reported IDP caseload, field teams indicate that 120,338 individuals are foreign nationals (approximately 2.36% of total IDPs across Sudan). These individuals are located across Blue Nile, Gedaref, Kassala, North Kordofan, South Kordofan, Northern, Red Sea, River Nile, and White Nile states. DTM estimates that the IDP caseload in the remaining states are all Sudanese nationals. The majority of foreign nationals (90,901 IDPs) are

located in White Nile state – where they constitute 21.52% of the IDP caseload in that state. In comparison, foreign nationals constitute smaller proportions of the observed caseload in Red Sea (8.59%), Kassala (4.82%), Gedaref (2.74%), Blue Nile (0.81%), South Kordofan (0.73%), Northern (0.18%), River Nile (0.05%), and North Kordofan (<0.01%).

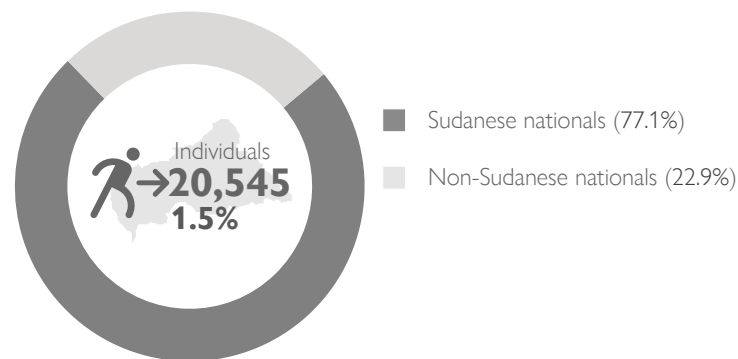


## Mixed Cross-Border Movement

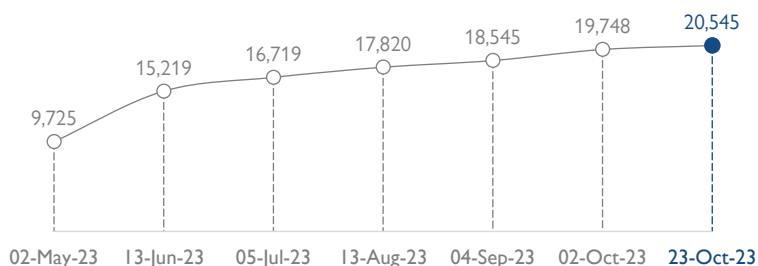
 **1,362,990**  
Mixed Cross-Border Movement

Since the onset of the conflict on April 15, 2023, DTM has noted substantial mixed cross-border movements involving both Sudanese and foreign nationals (including returnees). Field teams report that such these movements have proved challenging for communities to undertake. Security concerns, such as the both the direct implication of military clashes or following the breakdown in law and order in many areas, as well as steep fuel and transportation costs, and environmental events (for example flooding during the 2023 rainy season) have all impacted options for travel domestically and into neighbouring countries.

## CENTRAL AFRICAN REPUBLIC

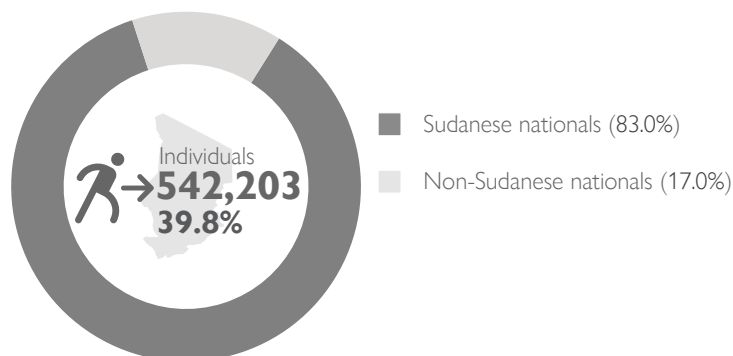


Source: IOM, UNHCR, National Commission for Refugees (CNR)

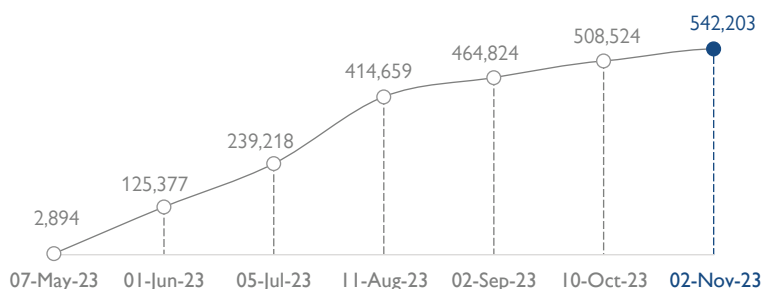


Graph 3: Timeline of Mixed Cross-Border Movement into Central African Republic

## CHAD<sup>2</sup>



Source: IOM, UNHCR



Graph 4: Timeline of Mixed Cross-Border Movement into Chad

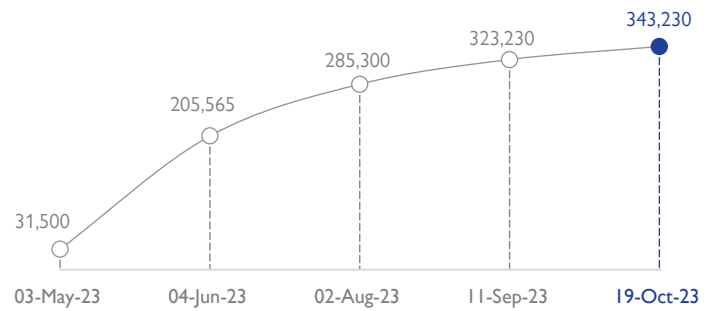
1. This percentage indicates the proportion of foreign nationals observed across all 18 states.

2. For more information on Mixed-Cross Border Movement to Chad, please visit [DTM Chad website](https://dtm.iom.int/sudan).

## EGYPT

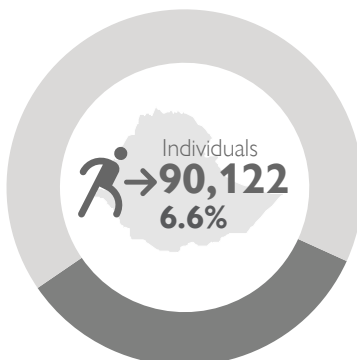


Source: Ministry of Foreign Affairs

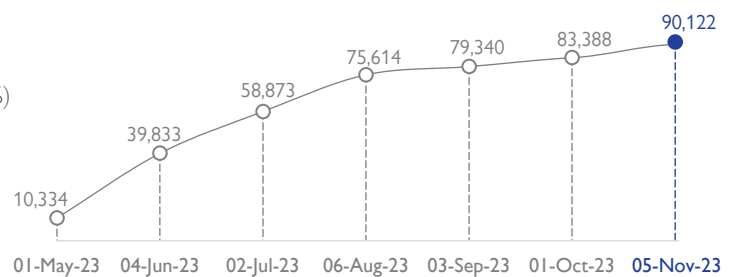


Graph 5: Timeline of Mixed Cross-Border Movement into Egypt

## ETHIOPIA<sup>1</sup>

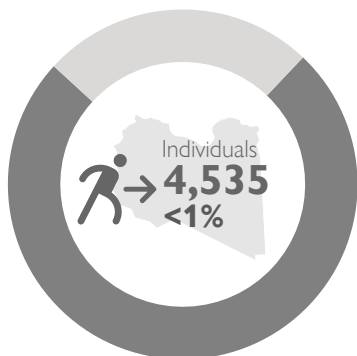


Source: IOM

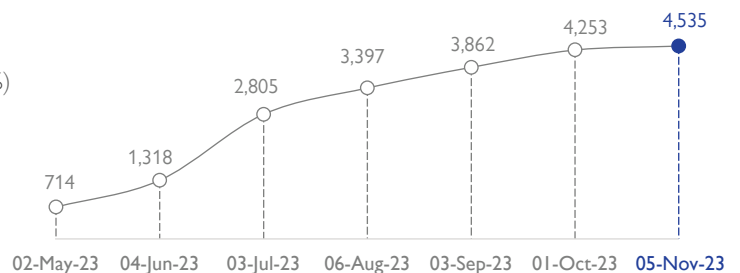


Graph 6: Timeline of Mixed Cross-Border Movement into Ethiopia

## LIBYA

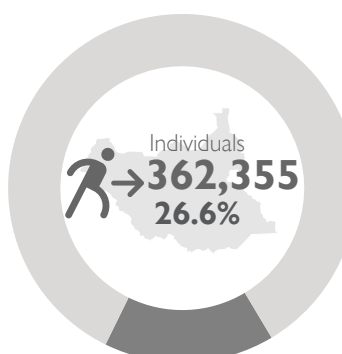


Source: IOM

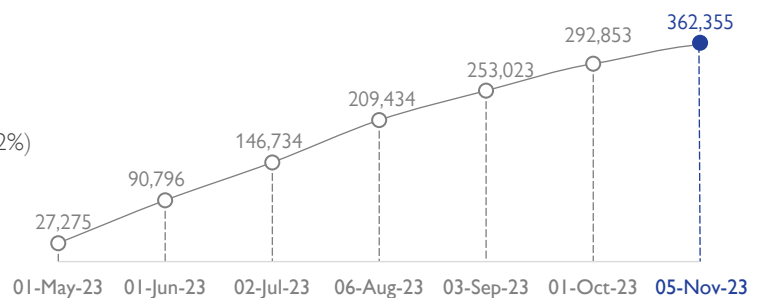


Graph 7: Timeline of Mixed Cross-Border Movement into Libya

## SOUTH SUDAN<sup>2</sup>



Source: IOM, UNHCR



Graph 8: Timeline of Mixed Cross-Border Movement into South Sudan

1. For more information on Mixed-Cross Border Movement to Ethiopia, please visit [Population Movement from Sudan to the East and Horn of Africa Dashboard](#).  
2. For more information on Mixed-Cross Border Movement to South Sudan, please visit [Population Movement from Sudan to South Sudan Dashboard](#).



**USAID**  
FROM THE AMERICAN PEOPLE



Funded By European  
Union Humanitarian Aid

## Disclaimer

The figures for Egypt have been provided by the Egyptian Foreign Ministry. All remaining figures for cross-border movement has been provided by DTM country focal points. Data is collected through DTM field teams , partners and national authorities. The data collection is based on DTM's flow monitoring and event tracking methodology.

With the support of:



**IOM**  
UN MIGRATION

REGIONAL  
DATA HUB  
MENA