

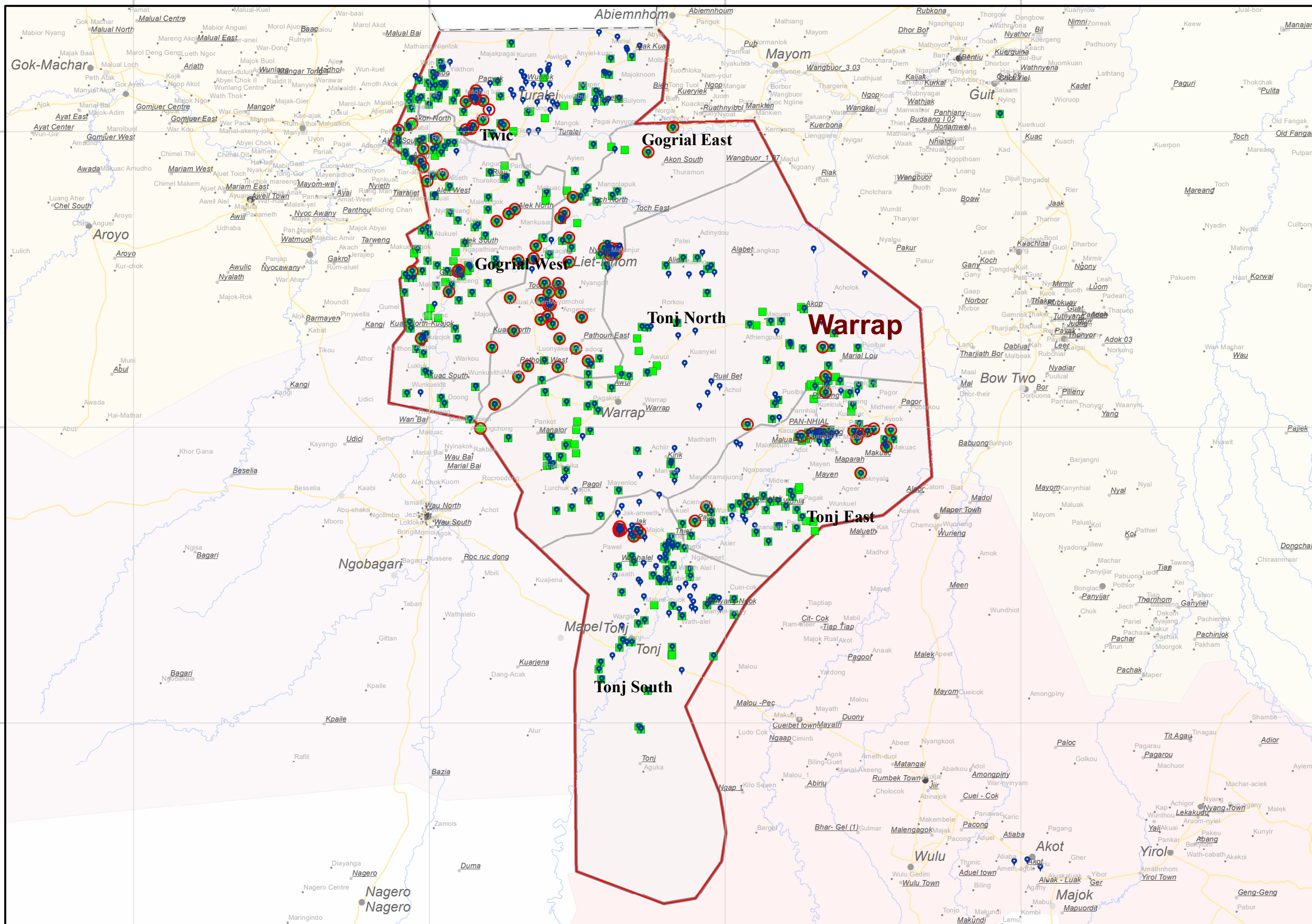
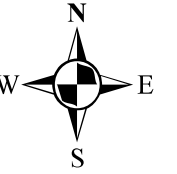


**DTM**  
IOM DISPLACEMENT  
TRACKING MATRIX  
SOUTH SUDAN



# IDPs and Returnees locations in Warrap as of August 2022

Displacement Tracking Matrix Mobility Tracking Round 13



## South Sudan Mobility Tracking Round 13, August 2022

- State
- County

### Payam - Sub Area name

- Village - Location name
- Locations of returnee individuals (previously displaced abroad) present at time of assessment
- Locations of returnee individuals (previously displaced only in South Sudan) present at time of assessment
- Locations of IDP individuals present at time of assessment
- Payam - Sub\_area name
- National Capital
- Admin1 Capital
- Admin2 Capital
- Primary Town / Large Town
- Roads
- Rivers
- State
- Bordering Country

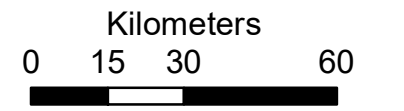
Total number of IDPs individuals present at the time of assessment **273,654**

Subset of IDPs individuals present at the time of assessment who were previously displaced abroad **2,217**

Total number of Returnees individuals present at the time of assessment **266,110**

Subset of Returnees individuals present at the time of assessment who were previously displaced abroad **6,380**

Disclaimer: This map is for illustration purposes only. Names and boundaries on this map do not imply official endorsement or acceptance by IOM.



27°0'0"E 28°0'0"E 29°0'0"E 30°0'0"E

9°0'0"N 8°0'0"N 7°0'0"N

9°0'0"N 8°0'0"N 7°0'0"N