

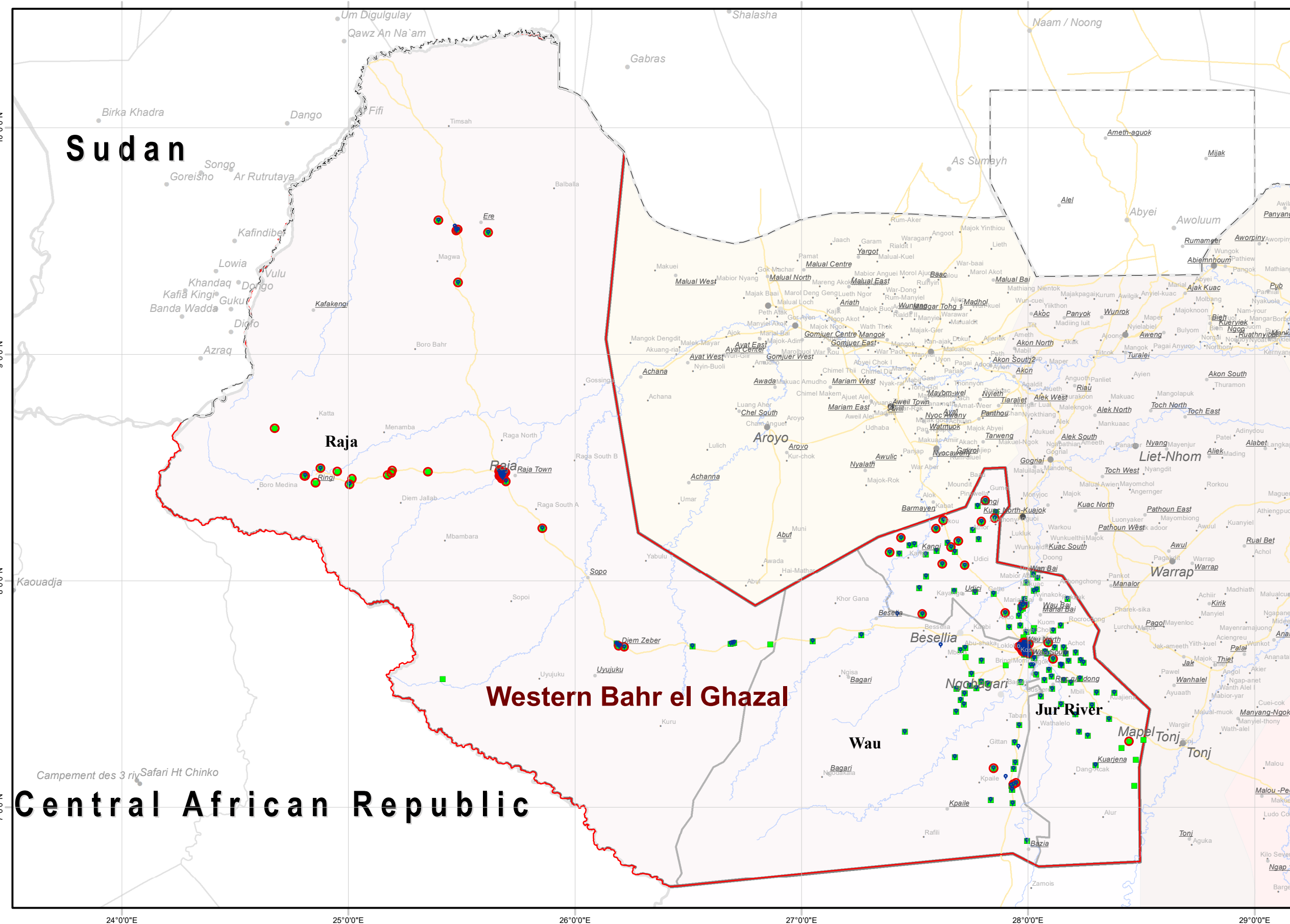
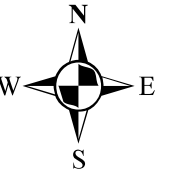


**DTM**  
IOM DISPLACEMENT  
TRACKING MATRIX  
SOUTH SUDAN



# IDPs and Returnees locations in Western Bahr el Ghazal as of September 2021

Displacement Tracking Matrix Mobility Tracking Round 11



## South Sudan Mobility Tracking Round 11, September 2021

- State
- County

*Payam - Sub Area name*

Village - Location name

- Locations of returnee individuals (previously displaced abroad) present at time of assessment
- Locations of returnee individuals (previously displaced only in South Sudan) present at time of assessment
- Locations of IDP individuals present at time of assessment
- National Capital
- Admin1 Capital
- Admin2 Capital
- Primary Town / Large Town
- Roads
- Bordering Country
- Rivers
- State

Total number of IDPs individuals present at the time of assessment **46,292**

Subset of IDPs individuals present at the time of assessment who were previously displaced abroad **289**

Total number of Returnees individuals present at the time of assessment **243,832**

Subset of Returnees individuals present at the time of assessment who were previously displaced abroad **8,180**

Disclaimer: This map is for illustration purposes only. Names and boundaries on this map do not imply official endorsement or acceptance by IOM.

