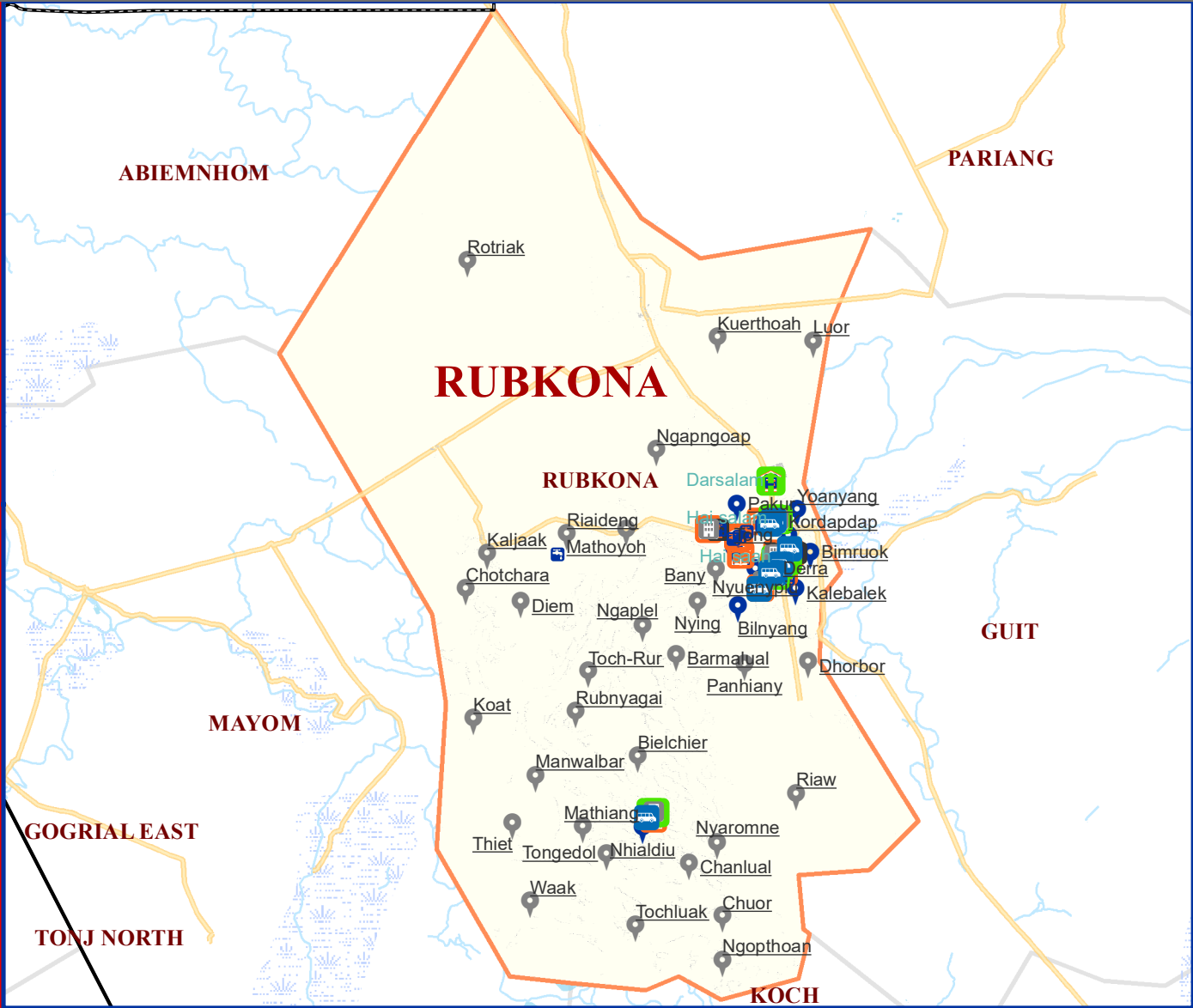
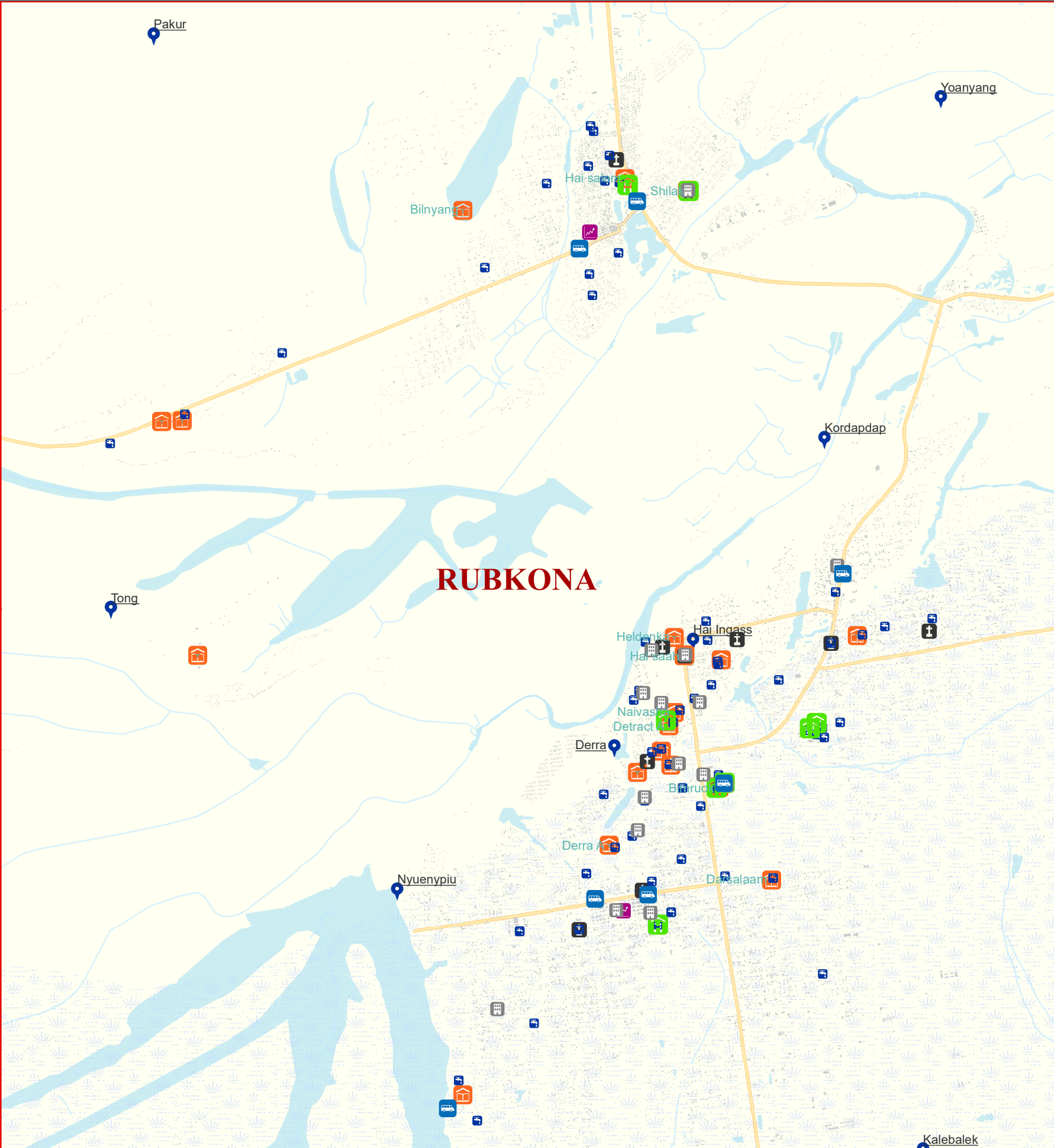


# Facilities mapped

## Unity\_Rubkona



### Legend

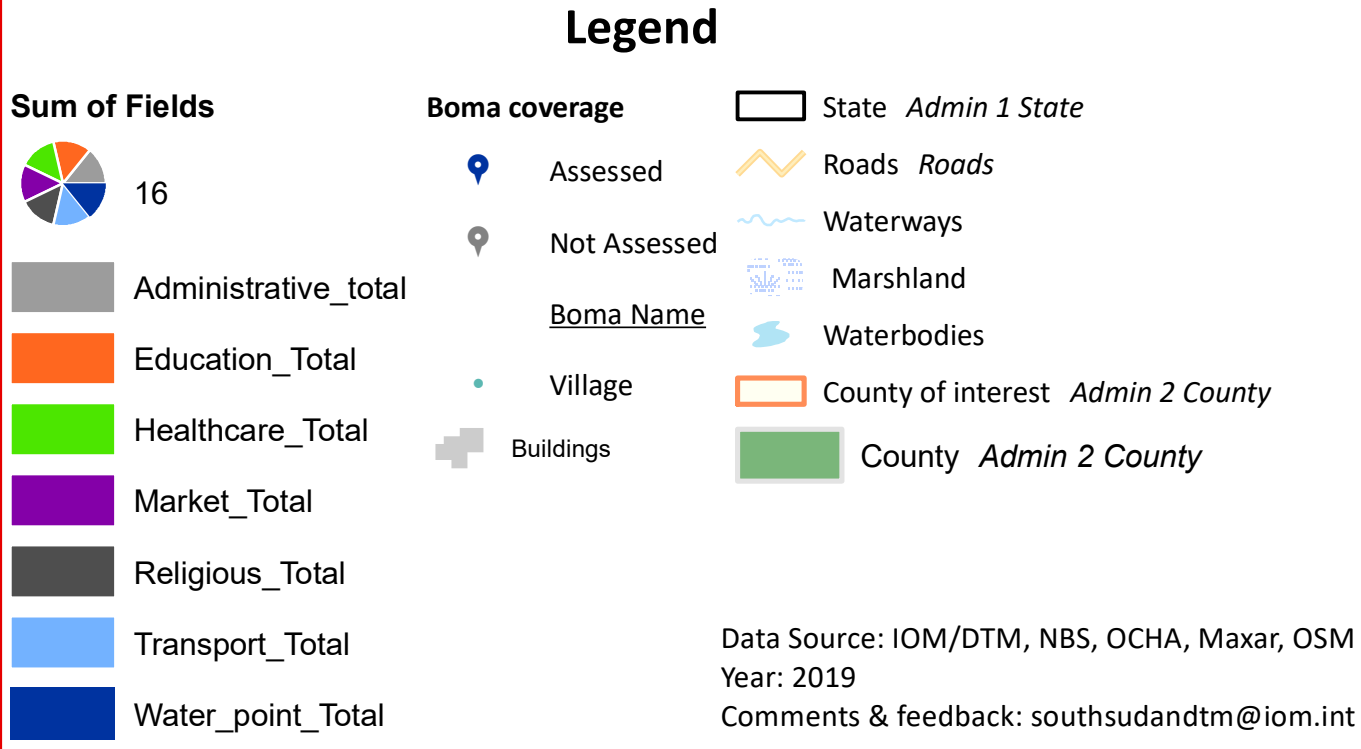
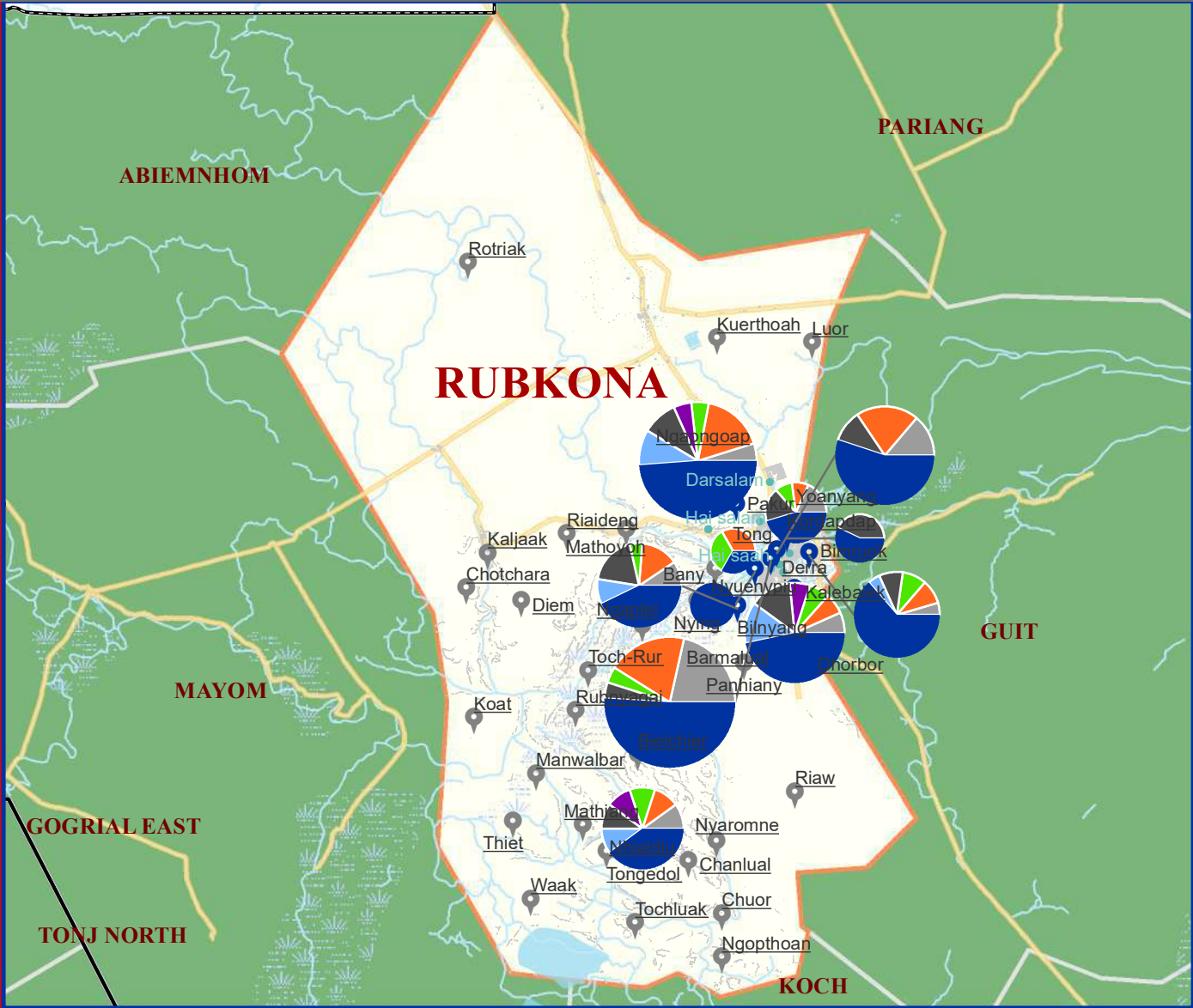
| Type of facilities | Boma coverage    | State Admin 1 State               |
|--------------------|------------------|-----------------------------------|
| Administrative     | Assessed         | County Admin 2 County             |
| Education          | Not Assessed     | County of interest Admin 2 County |
| Market             | <u>Boma Name</u> | Buildings                         |
| Healthcare         | Village          | Roads Roads                       |
| Religious building |                  | Waterways                         |
| Transport          |                  | Marshland                         |
| Water point        |                  | Waterbodies                       |

Data Source: IOM/DTM, NBS, OCHA, Maxar, OSM  
Year: 2019  
Comments & feedback: southsudandtm@iom.int



# Facilities by boma

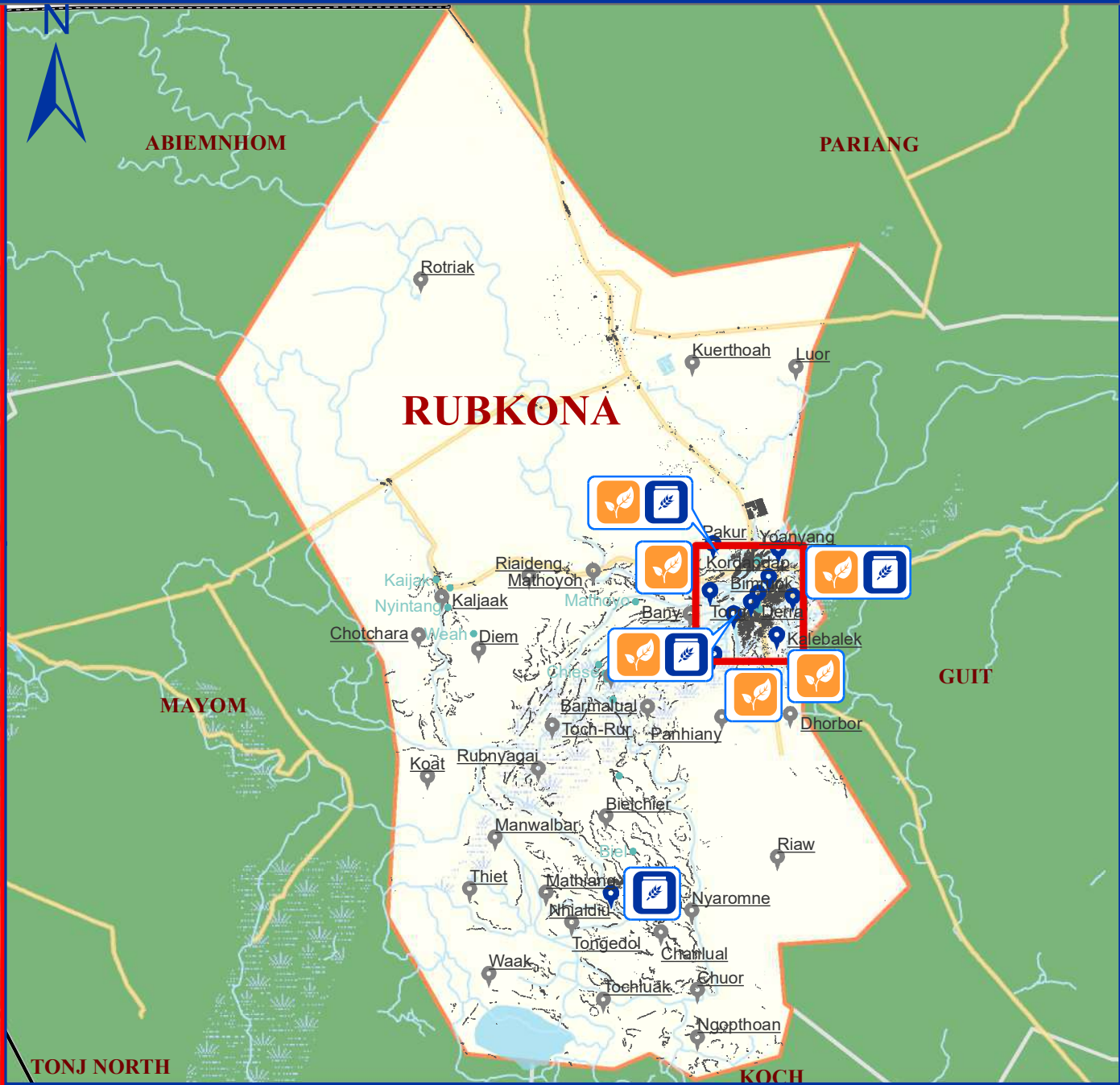
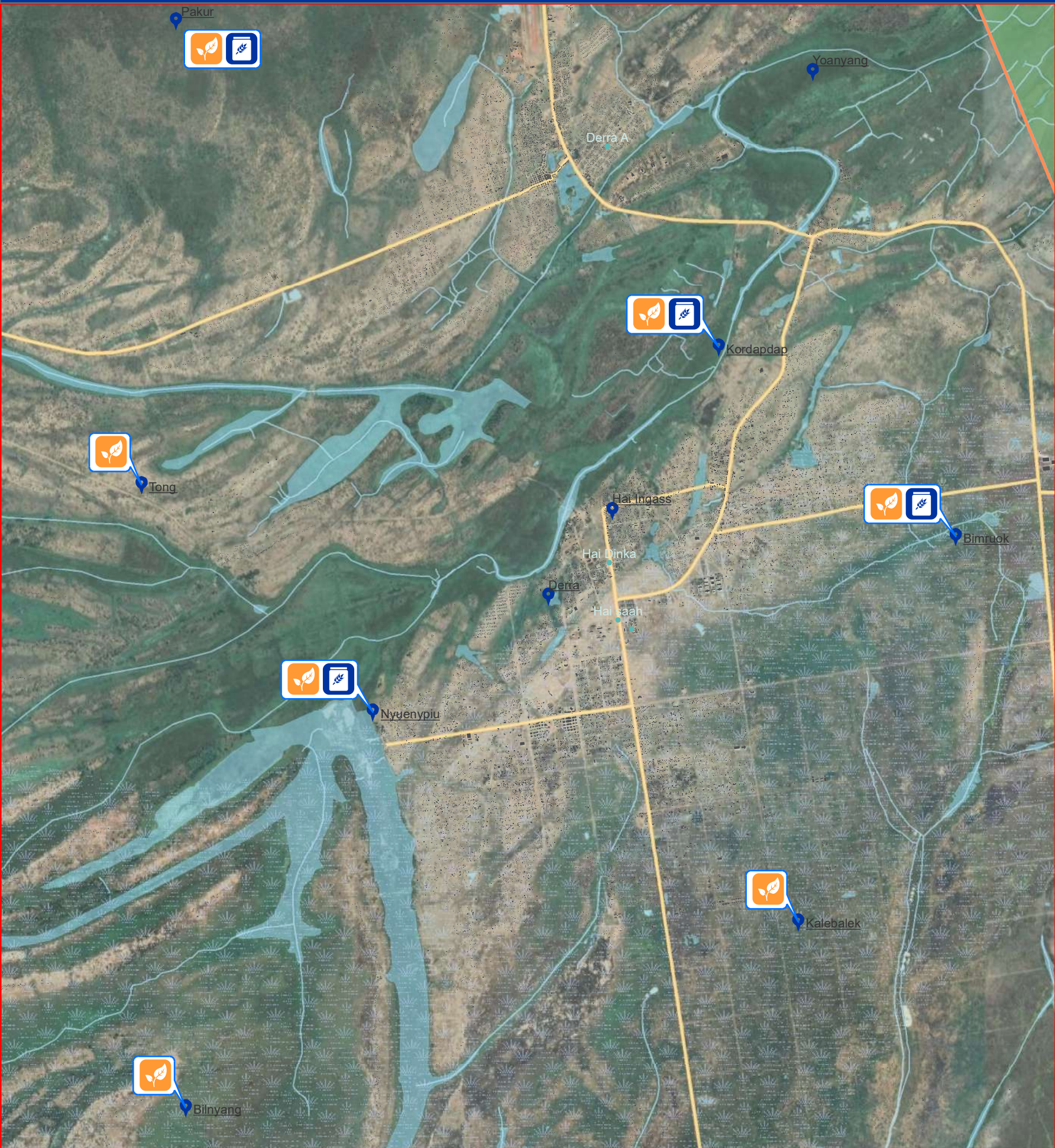
Unity\_Rubkona





# Major Food Crops Grown

Unity\_Rubkona



### Legend

**Boma Coverage**

- Assessed
- Not assessed
- Boma Name
- Village

**State**

- State
- County
- County of interest

**Buildings**

- Buildings
- Marshland

**Roads**

- Roads

**Waterways**

- Waterways
- Waterbodies

**Food Crops**

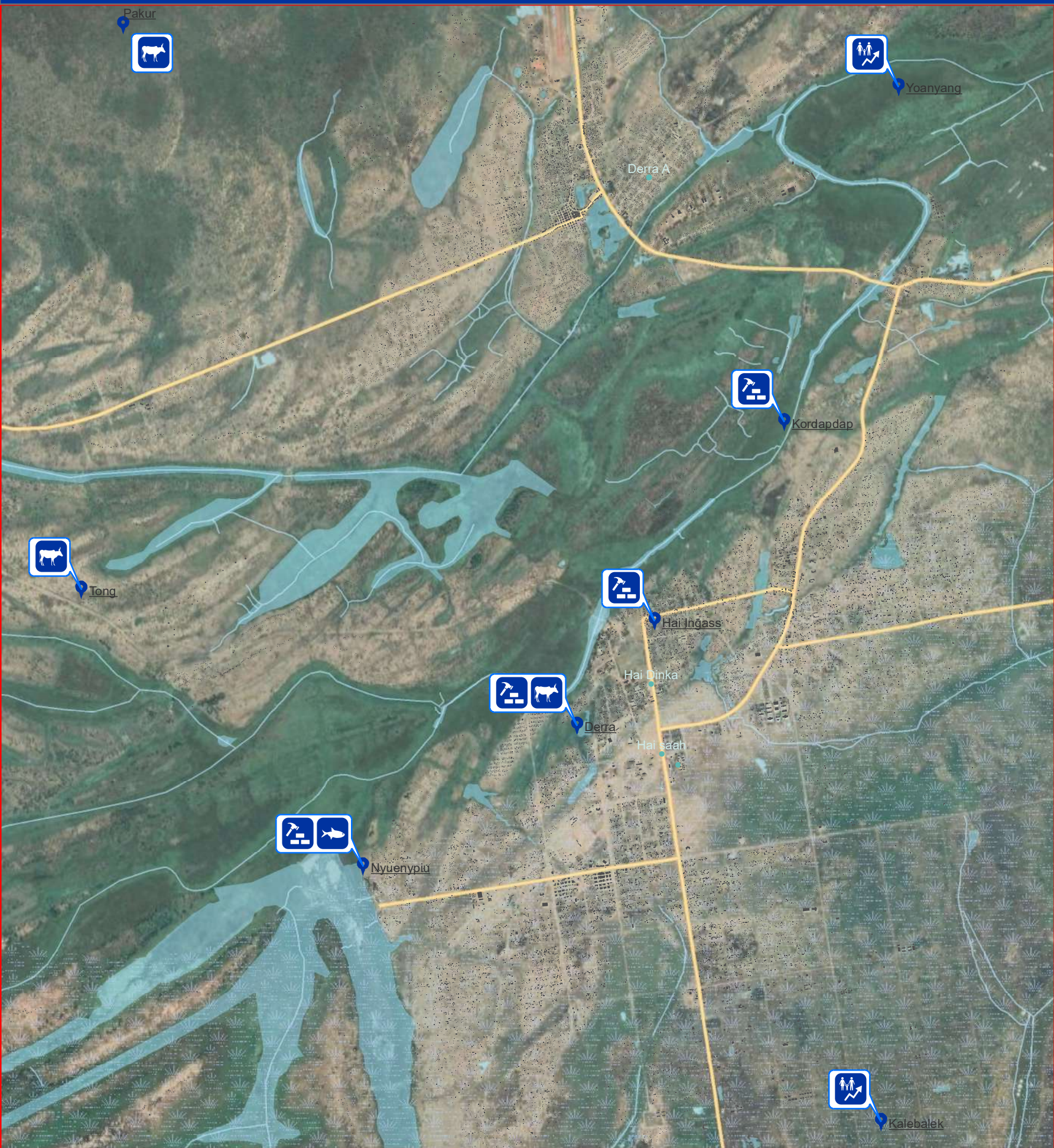
- Finger Millet
- Sorghum
- Groundnuts
- Rice
- Cassava

Data Source: IOM/DTM, NBS, OCHA, Maxar, OSM  
Year: 2019  
Comments & feedback: southsudandtm@iom.int



# Major Livelihood Practices

Unity\_Rubkona



**Boma Coverage**

- Assessed
- Not Assessed

**Boma Name**

- Village

**Legend**

- State
- County
- County of interest
- Buildings
- Marshland

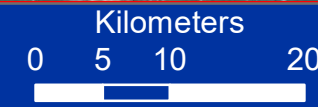
**Livelihood shocks**

- Drought
- Floods
- Livestock diseases
- Human epidemic
- Crop diseases
- Pests
- Conflict

**Data Source:** IOM/DTM, NBS, OCHA, Maxar, OSM

**Year:** 2019

**Comments & feedback:** southsudandtm@iom.int

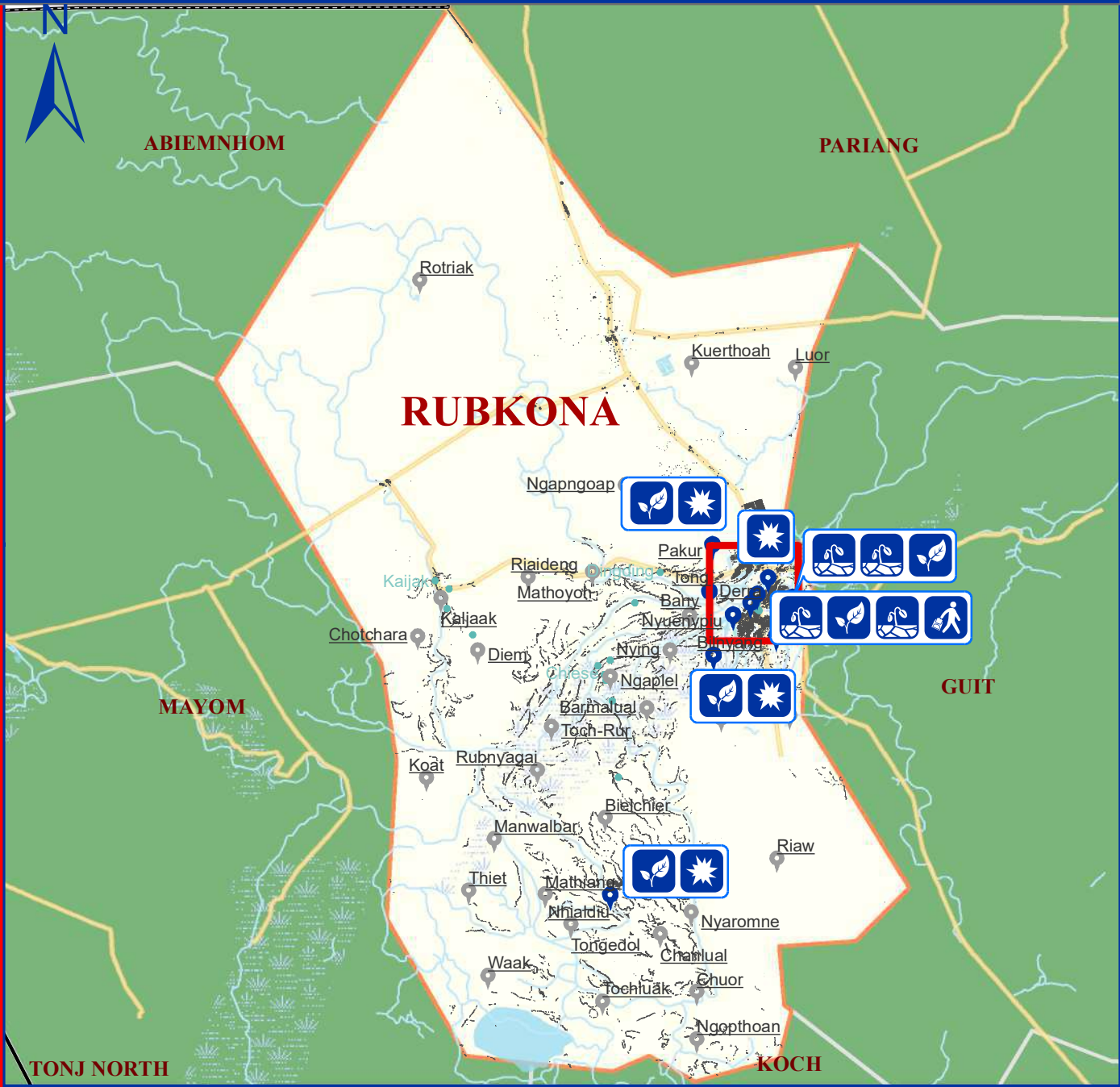
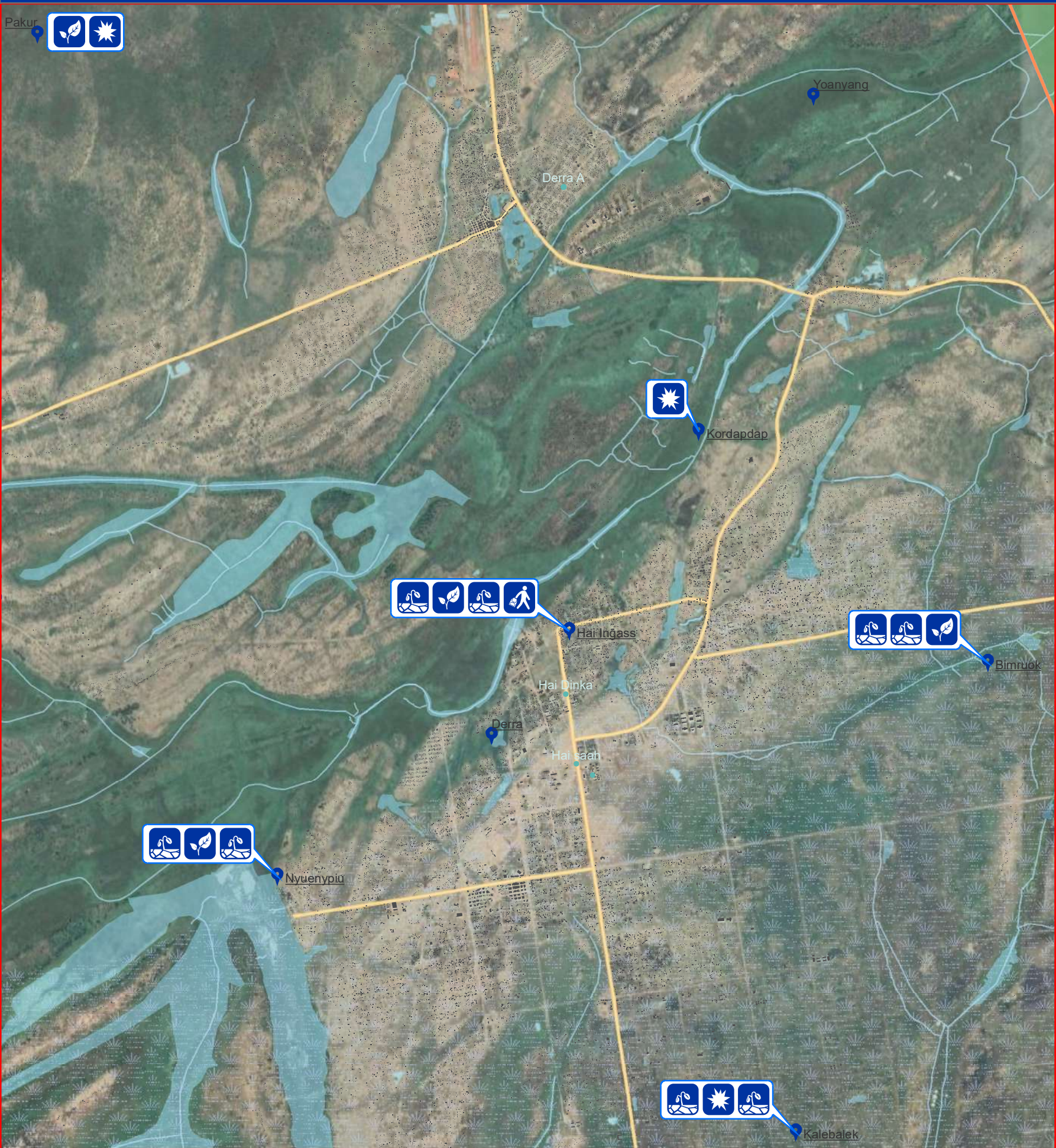


The boundaries on the map do not imply official endorsement or acceptance by the Government of the Republic of South Sudan or by IOM. The map is for planning purposes only. IOM cannot guarantee that the map is error free and therefore accepts no liability for consequential or indirect damages arising from its use.



# Problems Affecting Farming

Unity\_Rubkona



### Legend

**Boma Coverage**

- Assessed
- Not assessed
- Boma Name
- Village

- State
- County
- County of interest
- Buildings
- Marshland

- Roads
- Waterways
- Waterbodies

**Farming Problems**

- Crop Disease
- Conflict
- Natural Disaster
- Market Accessibility
- Other Crop Damage

Data Source: IOM/DTM, NBS, OCHA, Maxar, OSM

Year: 2019

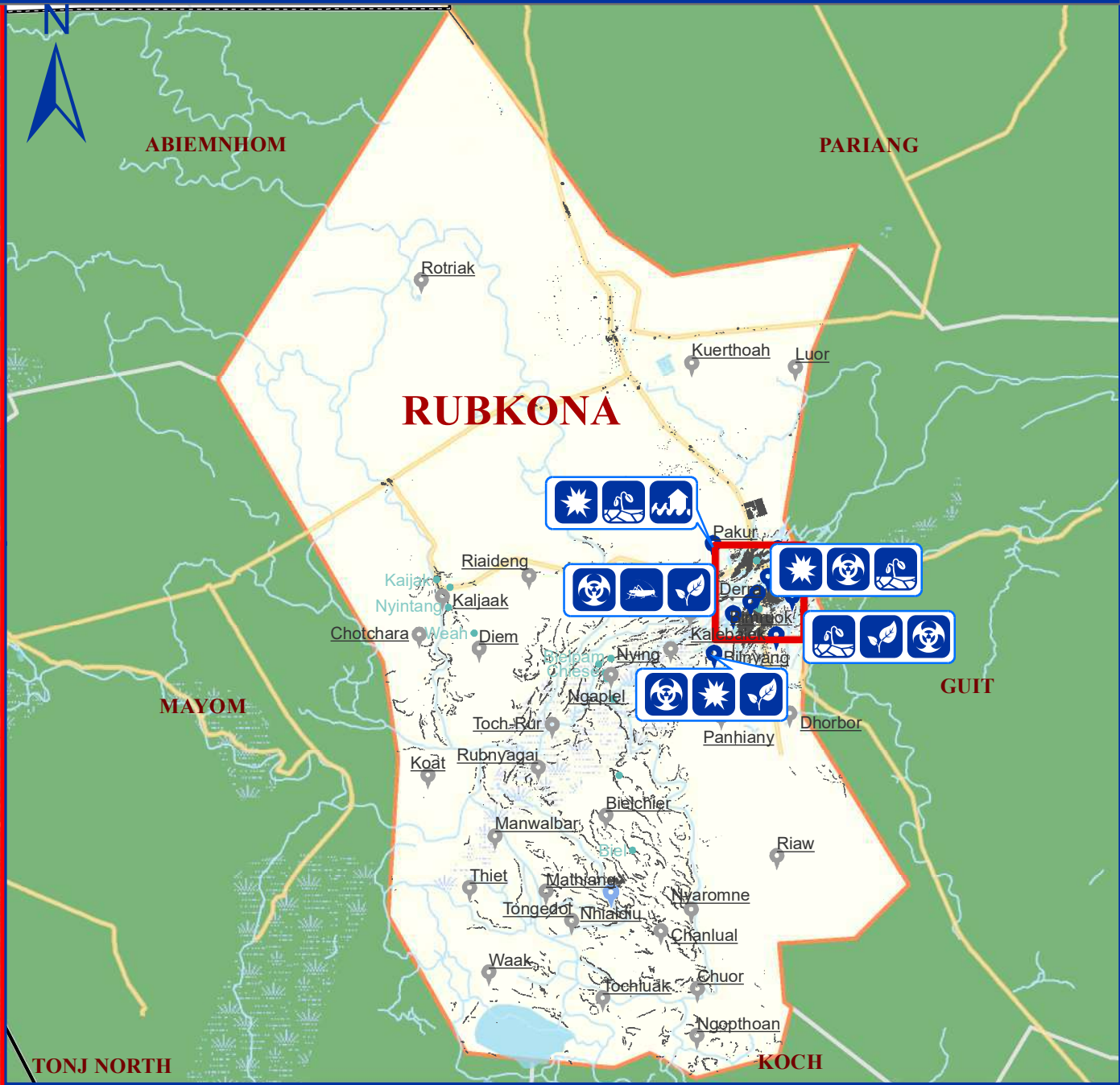
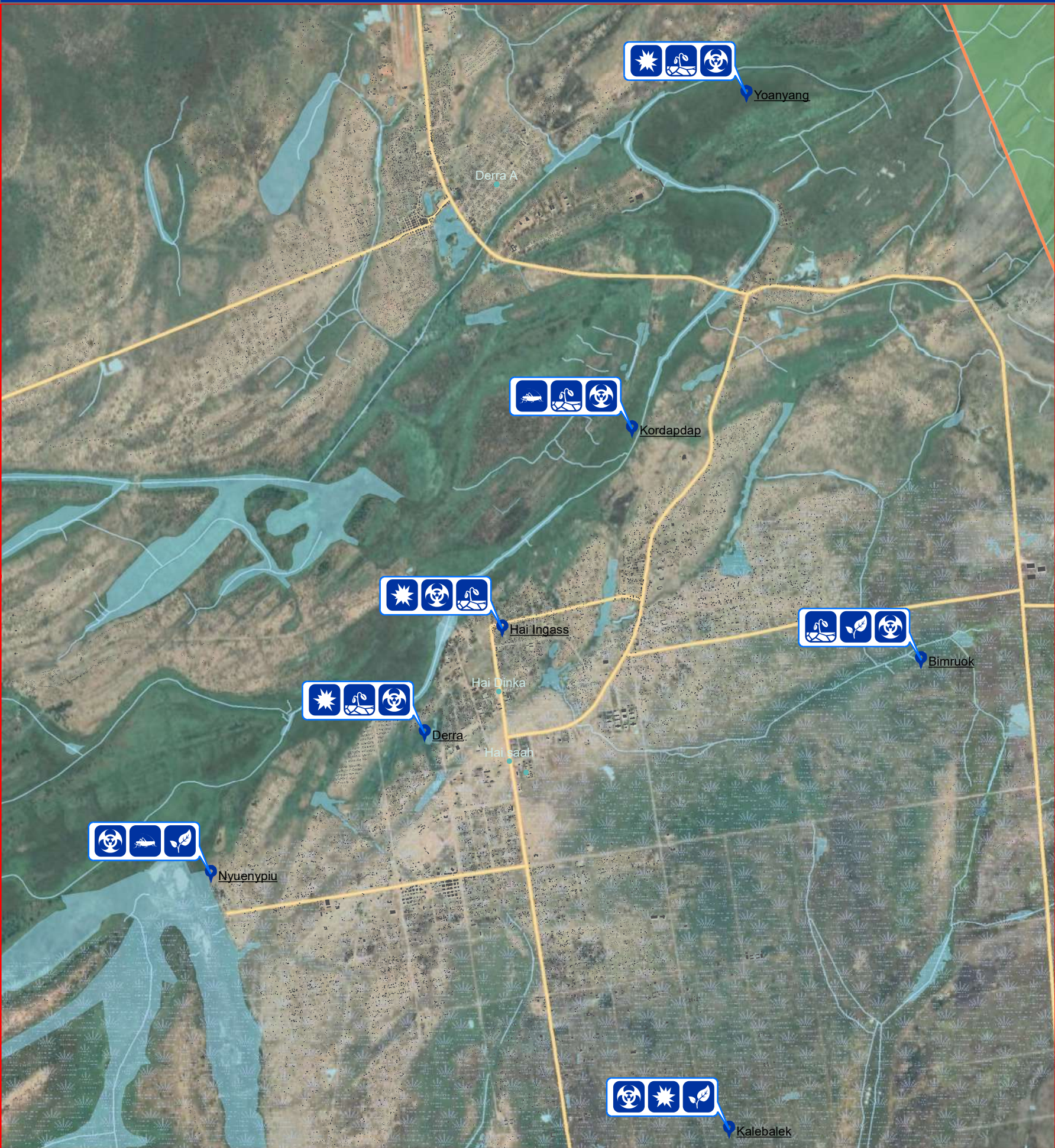
Comments & feedback: [southsudandtm@iom.int](mailto:southsudandtm@iom.int)

The boundaries on the map do not imply official endorsement or acceptance by the Government of the Republic of South Sudan or by IOM. The map is for planning purposes only. IOM cannot guarantee that the map is error free and therefore accepts no liability for consequential or indirect damages arising from its use.



# Top Three Livelihood Shocks

Unity\_Rubkona



**Boma Coverage**

- Assessed but no shocks
- Assessed with shocks
- Not Assessed

**Boma Name**

- Village

**Legend**

- State
- County
- County of interest
- Buildings
- Marshland
- Roads

**Livelihood Shocks**

- Drought
- Flood
- Livestock Disease
- Human Epidemic
- Crop Disease
- Pests
- Conflict

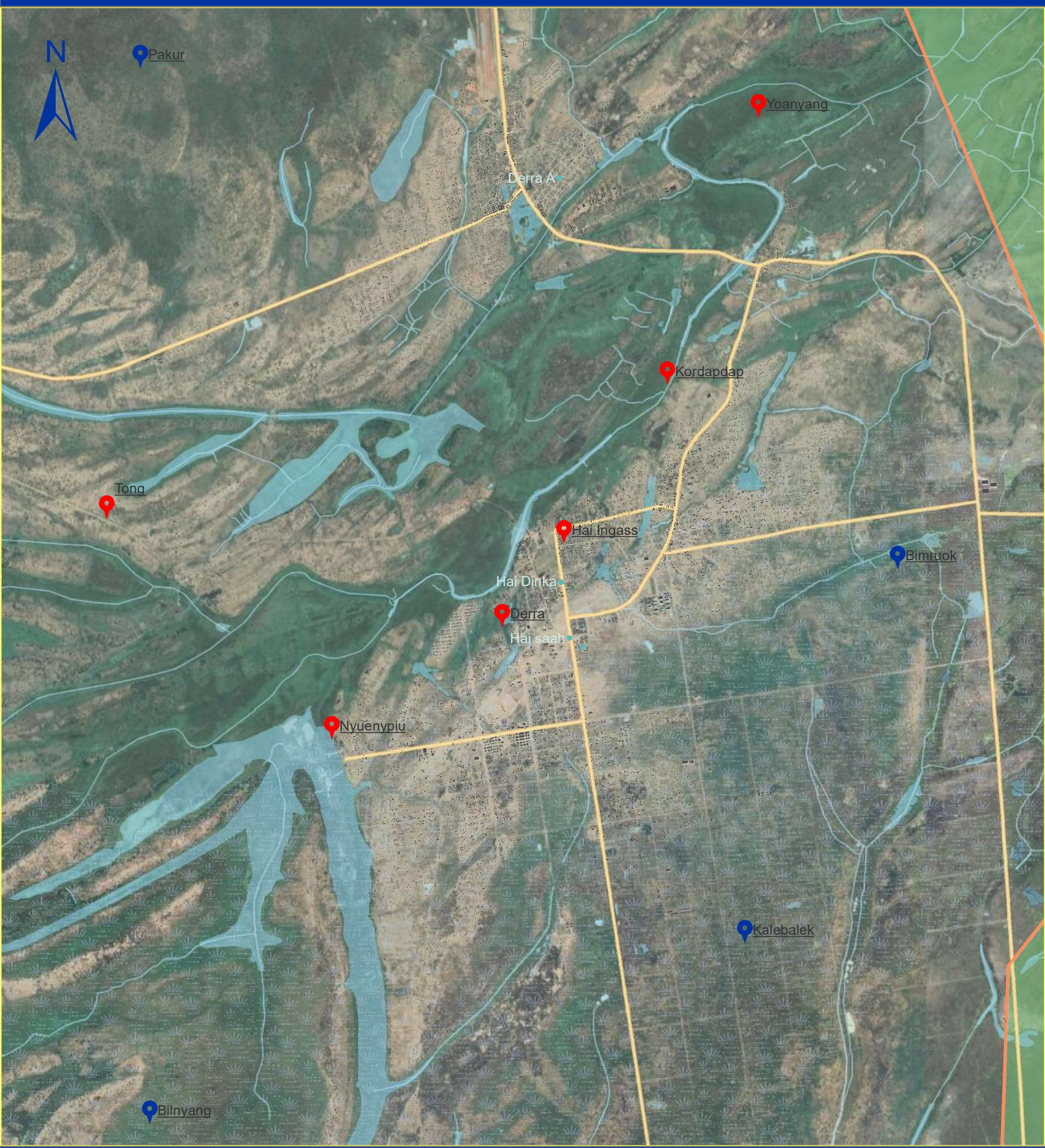
Data Source: IOM/DTM, NBS, OCHA, Maxar, OSM

Year: 2019

Comments & feedback: southsudandtm@iom.int

The boundaries on the map do not imply official endorsement or acceptance by the Government of the Republic of South Sudan or by IOM. The map is for planning purposes only. IOM cannot guarantee that the map is error free and therefore accepts no liability for consequential or indirect damages arising from its use.





### Legend

**Boma Access**

- Yes
- No
- Not Assessed

State

County

County of interest

Village

Buildings

Marshland

Waterbodies

Roads

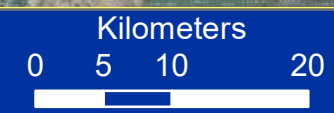
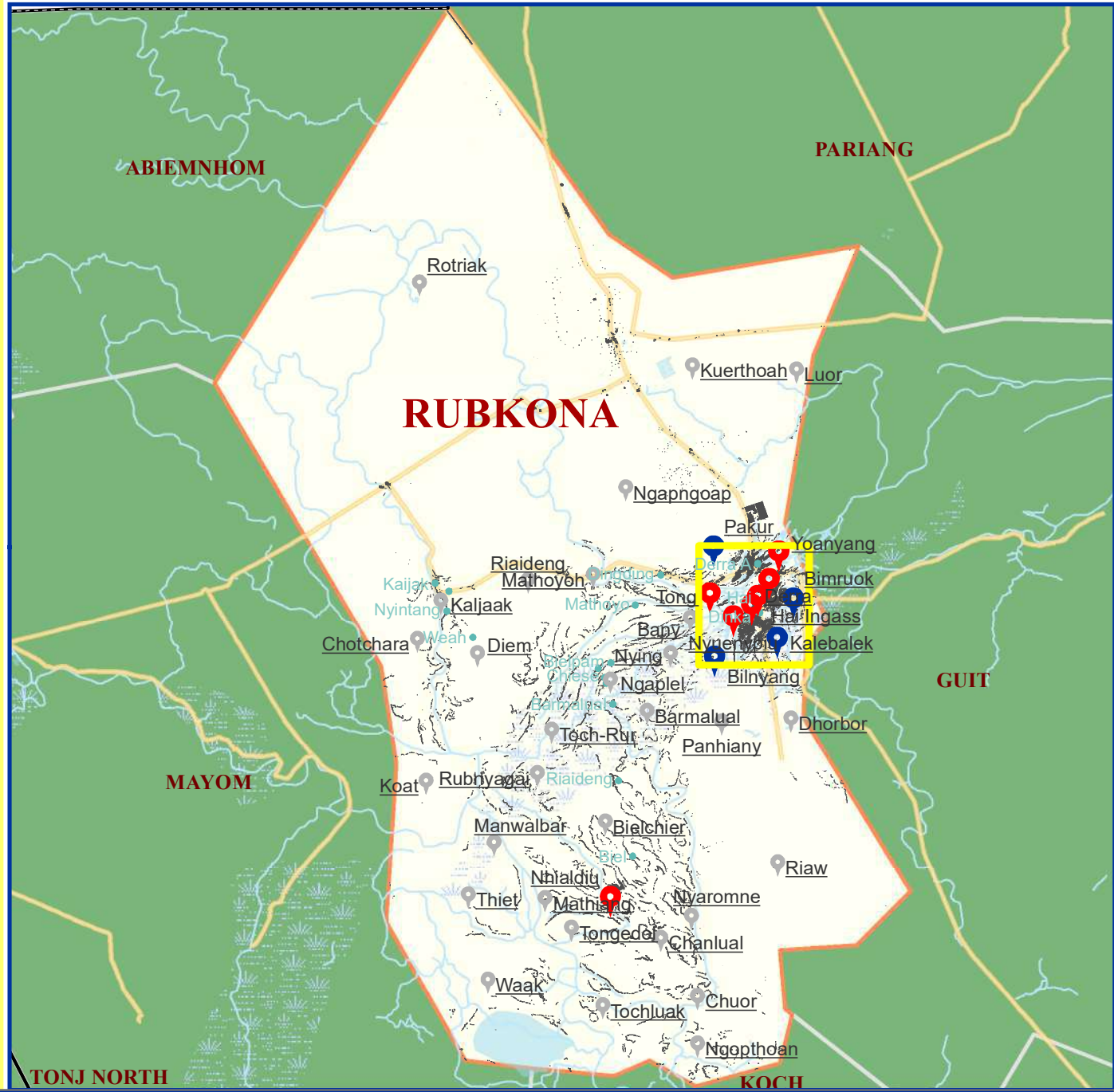
Waterways

Boma Name

Data Source: IOM/DTM, NBS, OCHA, Maxar, OSM

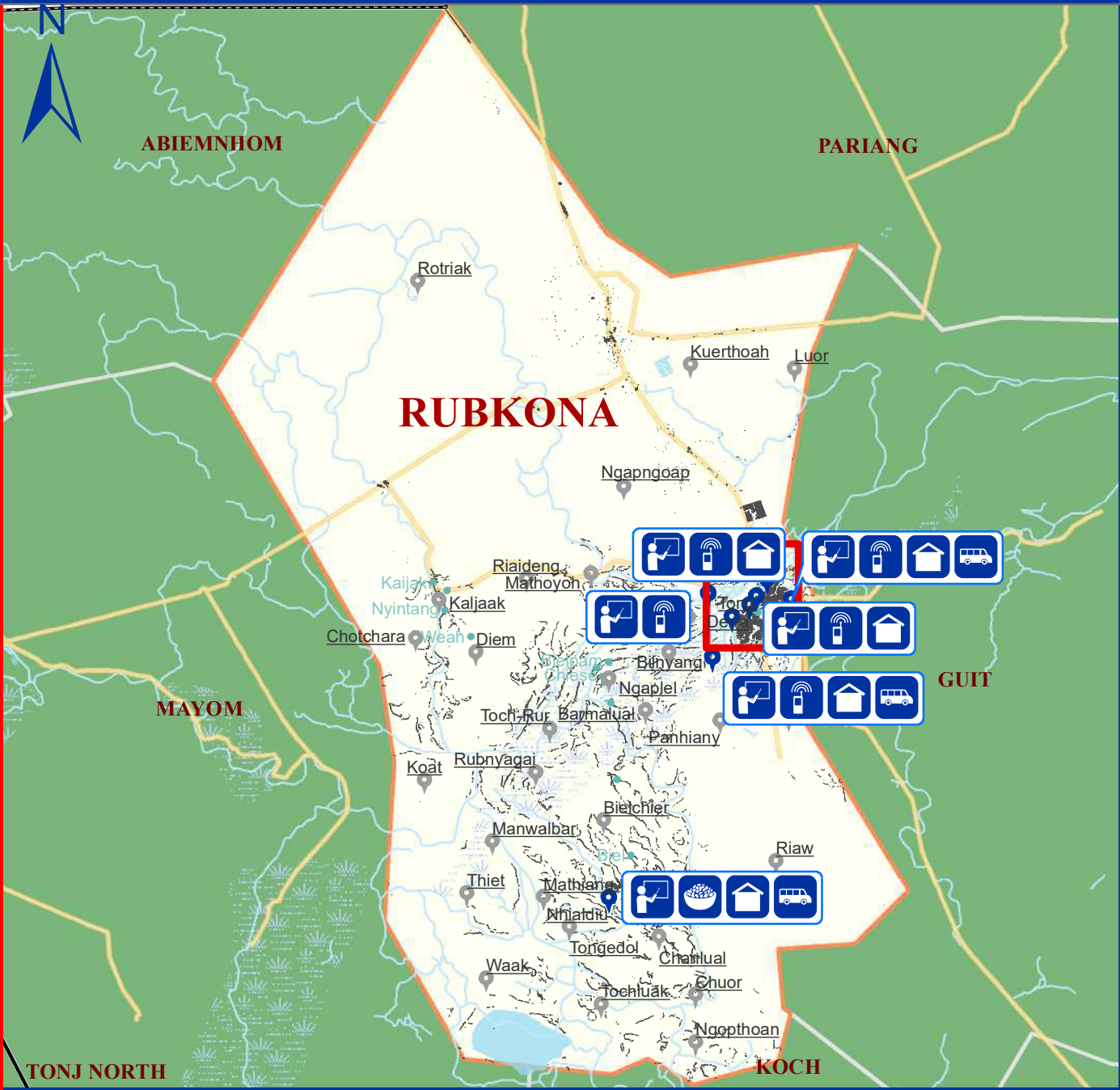
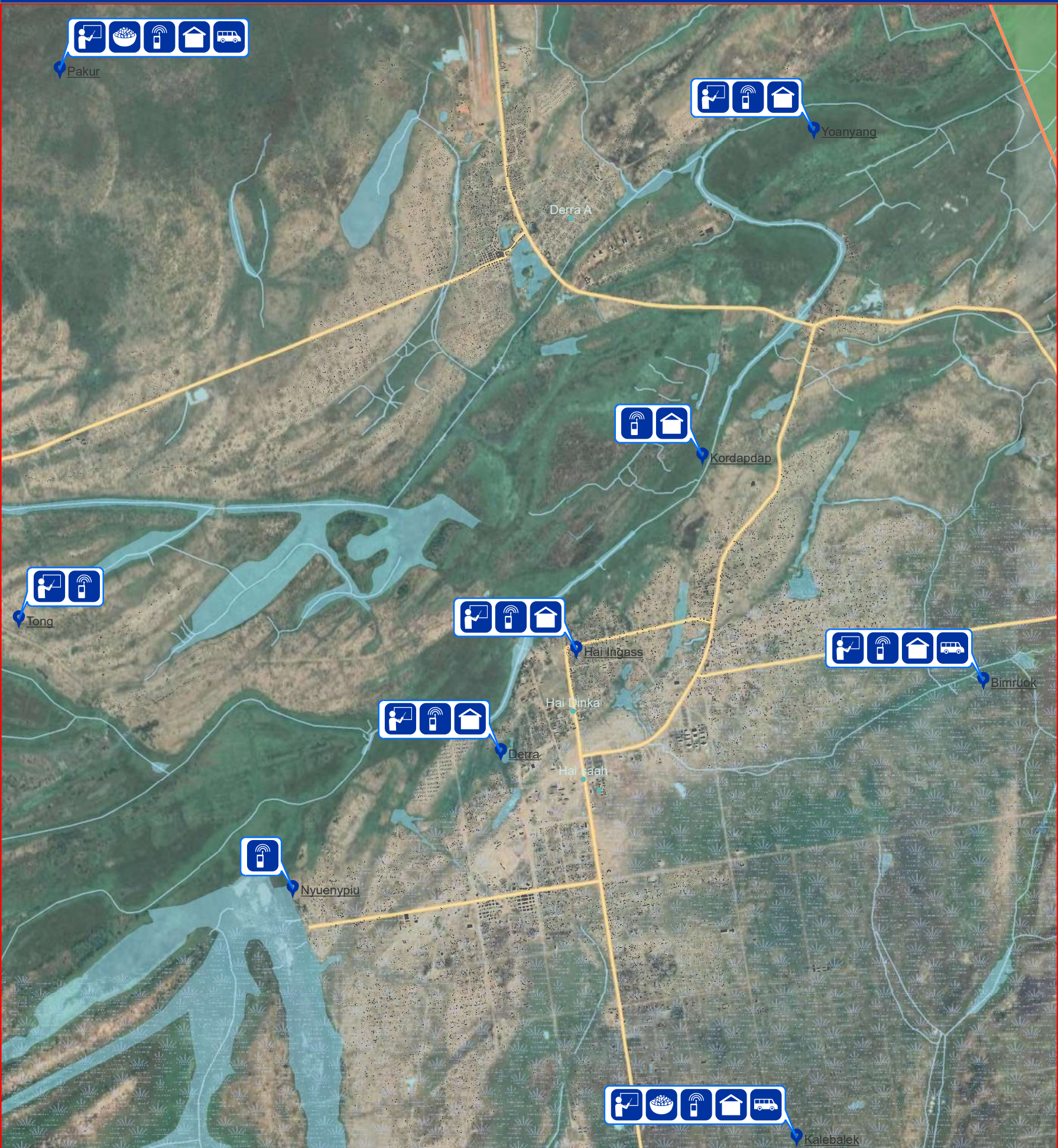
Year: 2019

Comments & feedback: [southsudandtm@iom.int](mailto:southsudandtm@iom.int)



The boundaries on the map do not imply official endorsement or acceptance by the Government of the Republic of South Sudan or by IOM. The map is for planning purposes only. IOM cannot guarantee that the map is error free and therefore accepts no liability for consequential or indirect damages arising from its use.





**Boma Coverage**

- Assessed
- Not assessed
- Boma Name
- Village

**Legend**

- State
- County
- County of interest
- Buildings
- Marshland

**Facilities**

- Education
- Health
- Public Transport
- Mobile Coverage
- Boma Market
- Religious Establishment
- Police Station

**Legend**

- Roads
- Waterways
- Waterbodies

Data Source: IOM/DTM, NBS, OCHA, Maxar, OSM  
Year: 2019  
Comments & feedback: southsudandtm@iom.int