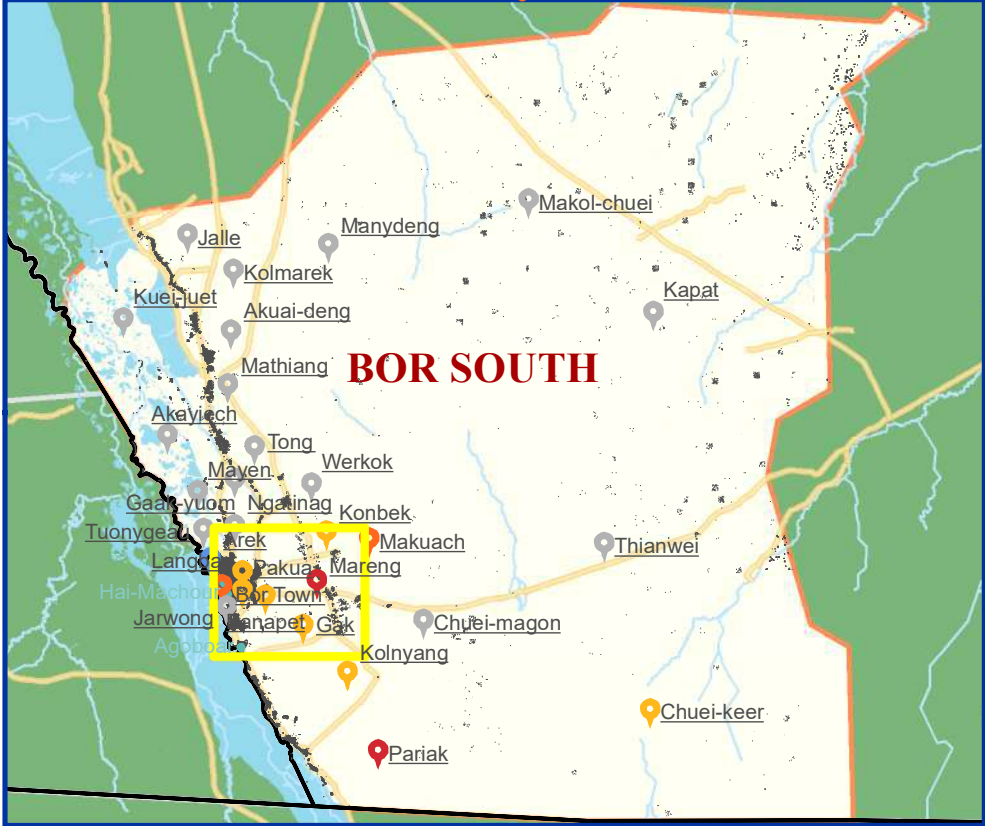
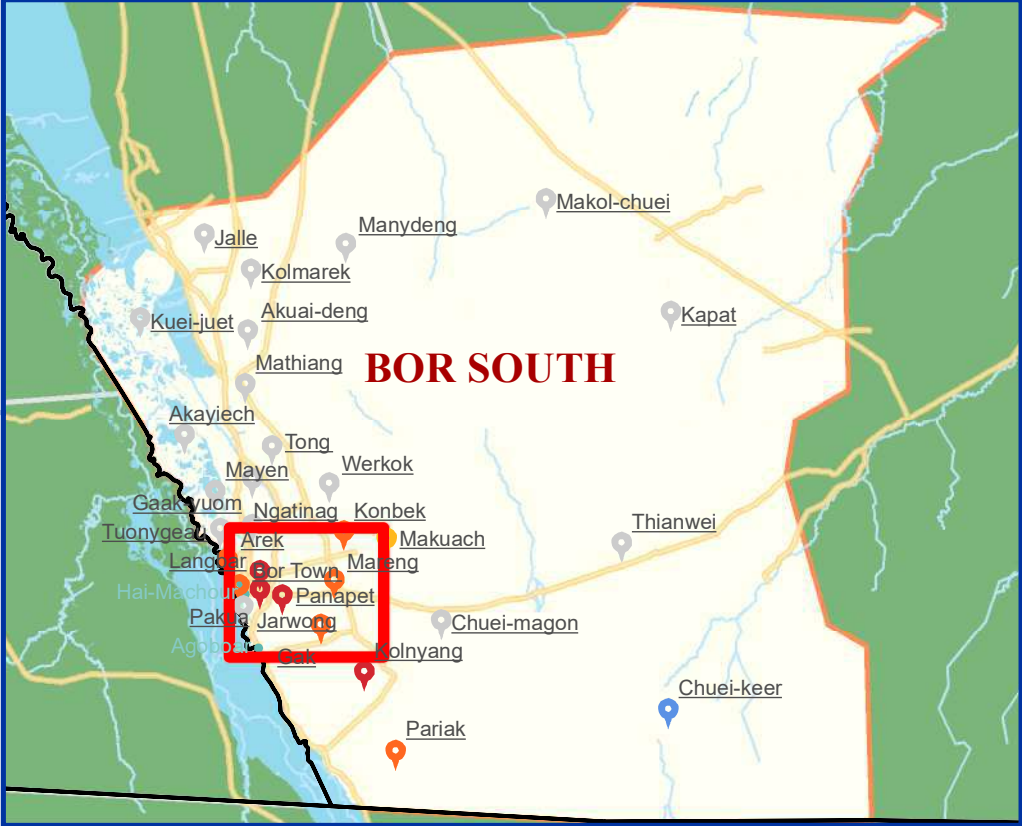




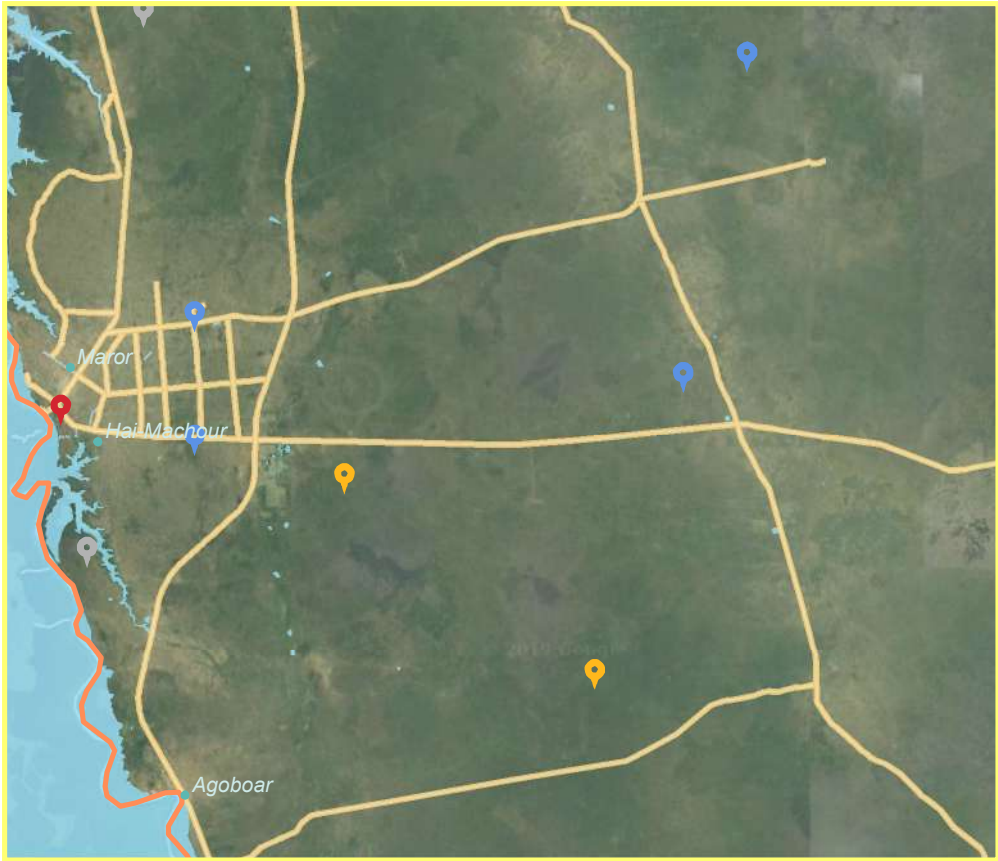
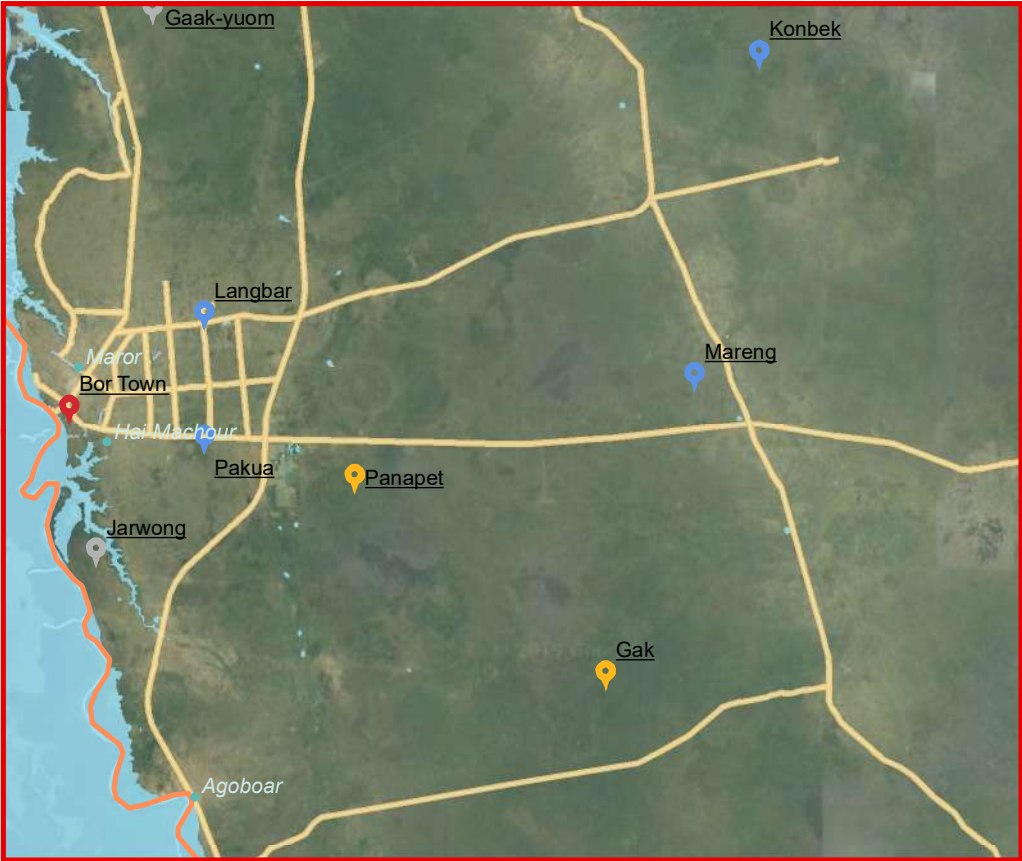
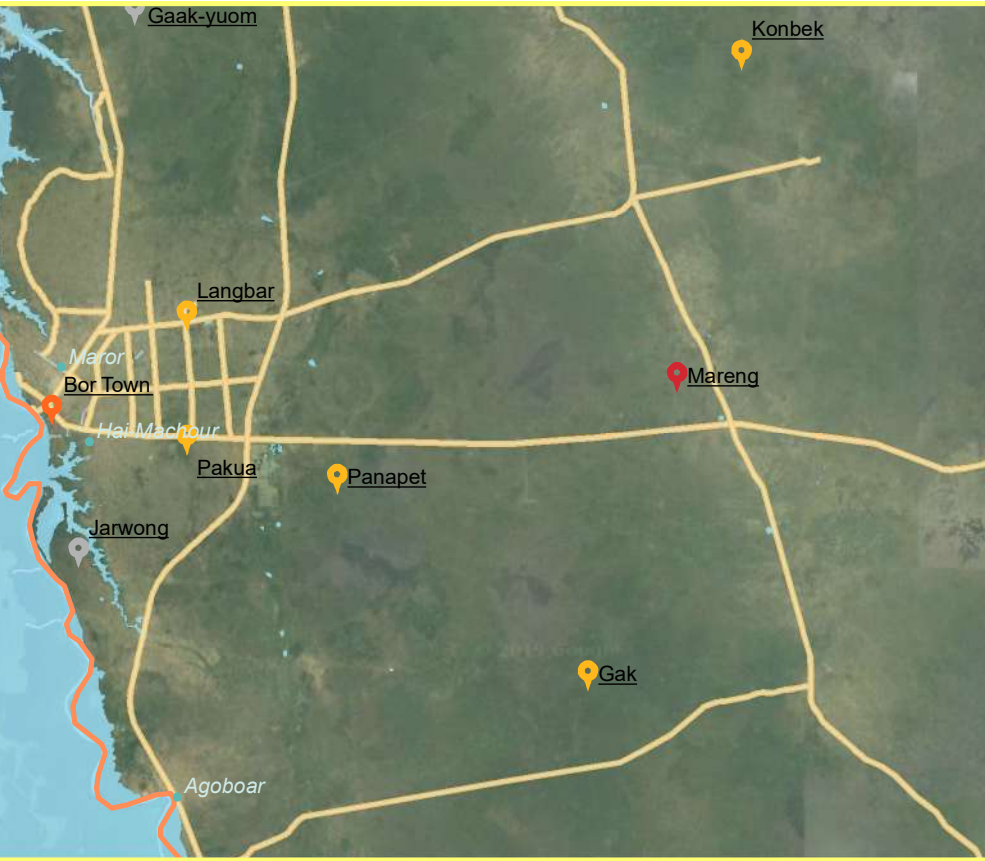
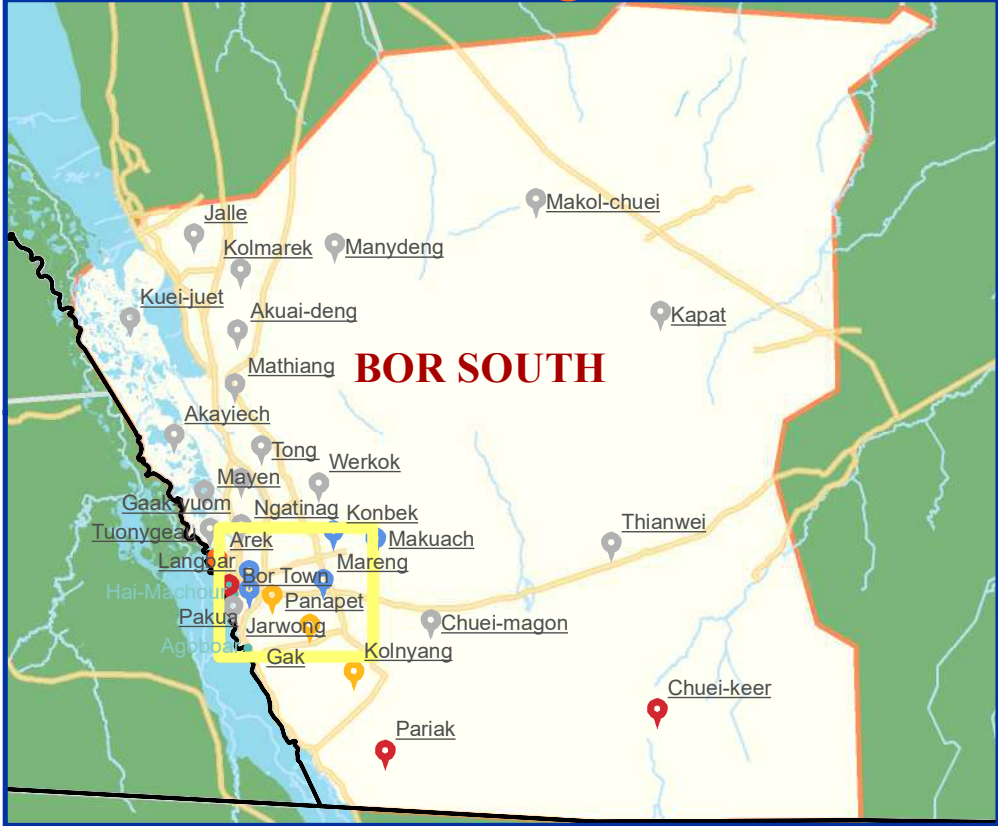
Food Security



Water Services



Conflict mitigation Services



## Legend

### Barriers to Access services

- Not Assessed
- Distance

- Insecurity
- Lack of resources
- Lack of services

- Village
- State
- County
- Buildings
- Roads

- County of interest
- Waterways
- Waterbodies

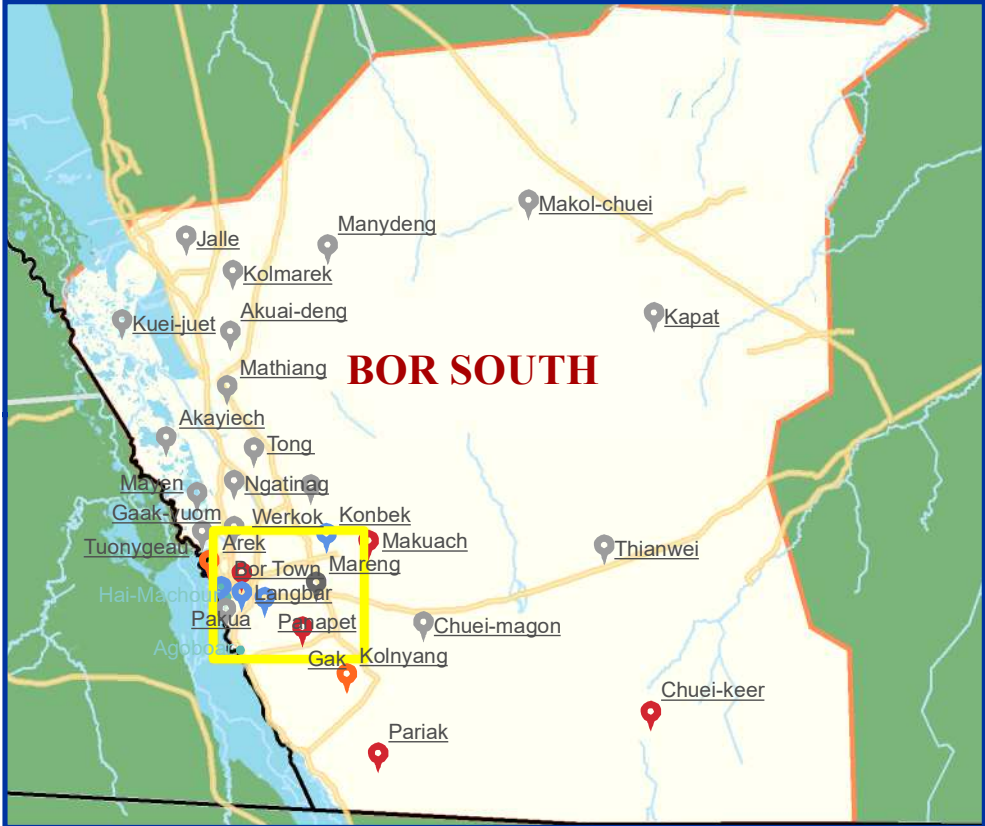
The boundaries on the map do not imply official endorsement or acceptance by the Government of the Republic of South Sudan or by IOM. The map is for planning purposes only. IOM cannot guarantee that the map is error free and therefore accepts no liability for consequential or indirect damages arising from its use.

Data Source: IOM/DTM, NBS, OCHA, Maxar, OSM  
Year: 2019  
Comments & feedback: southsudandtm@iom.int

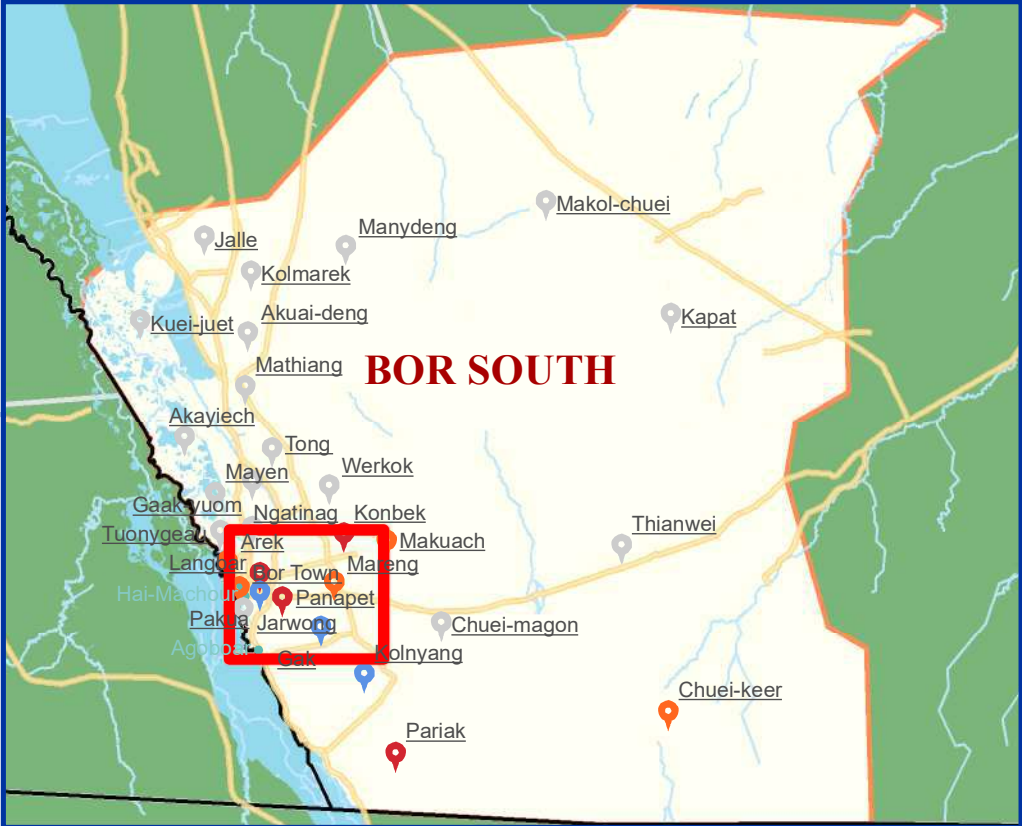




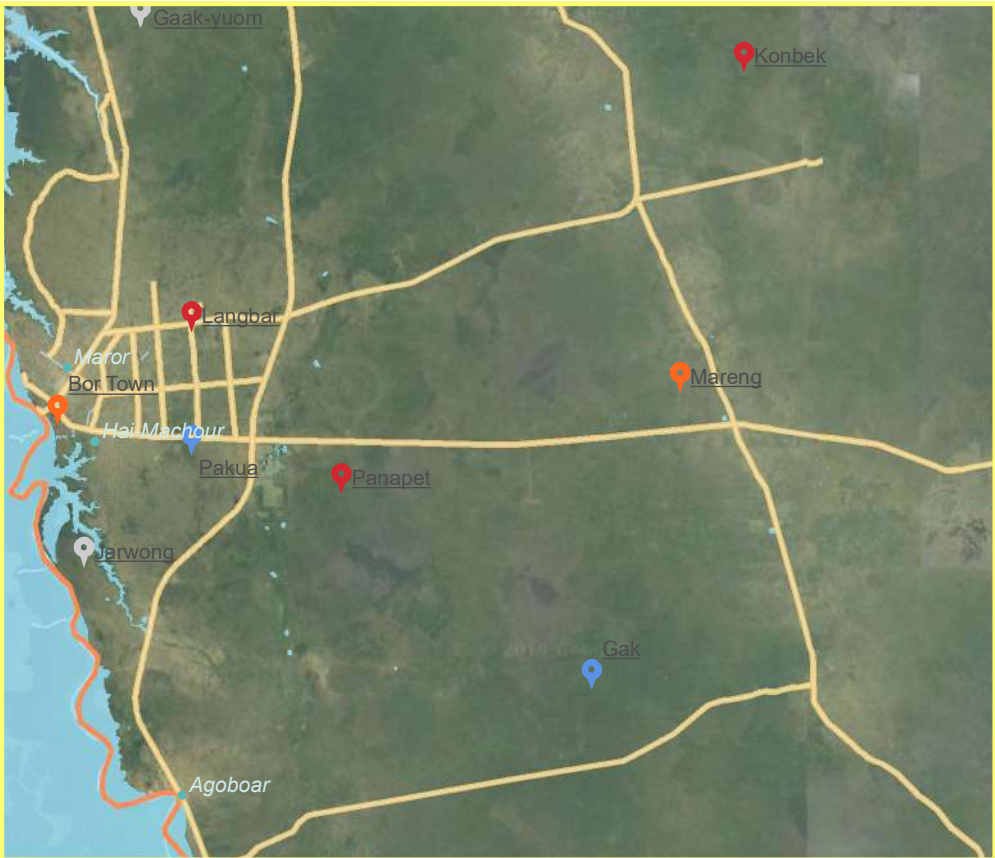
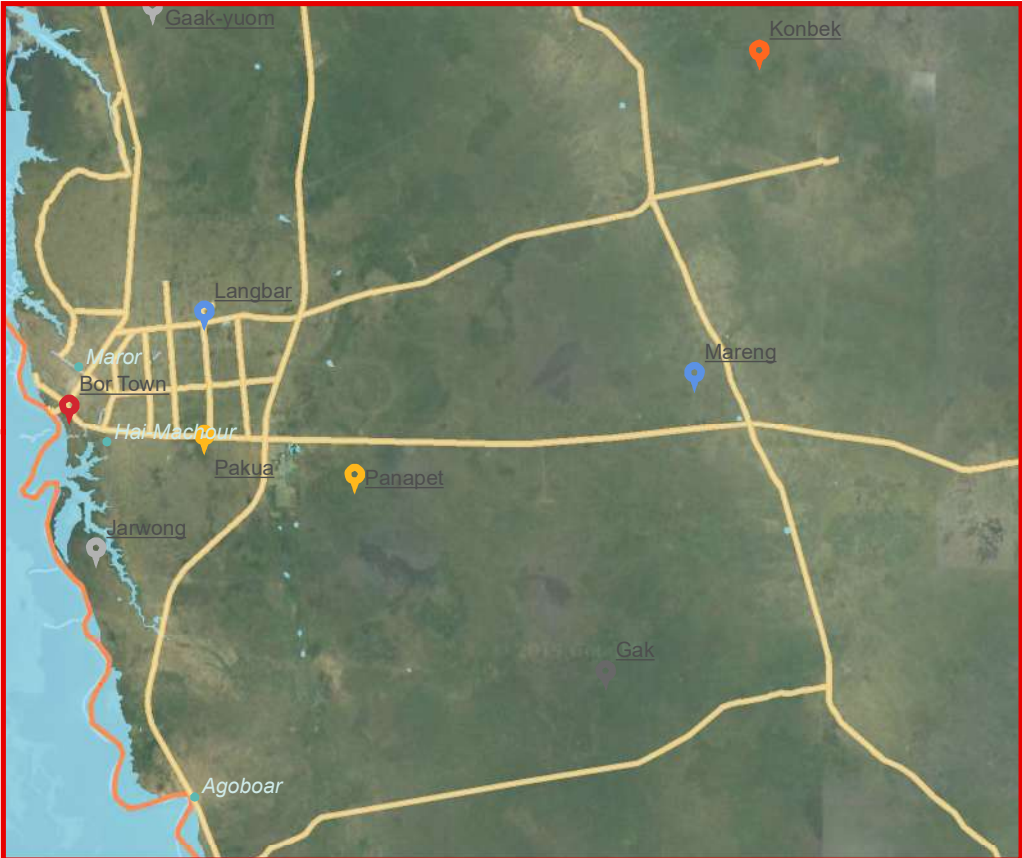
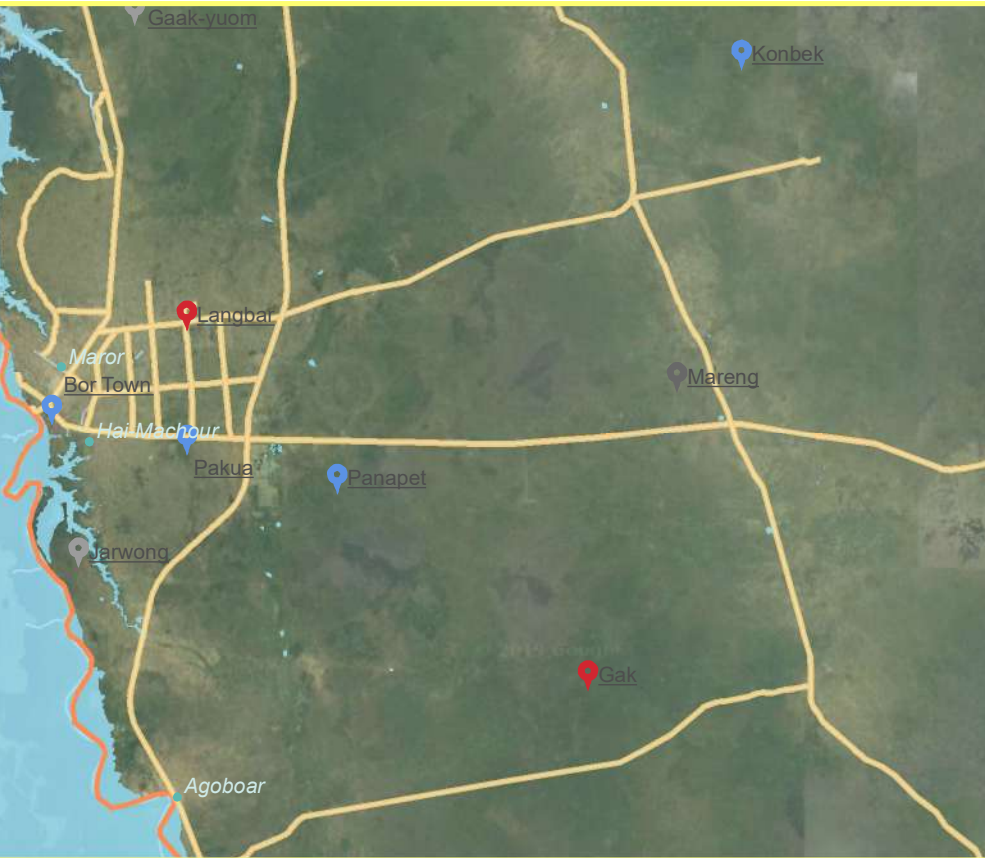
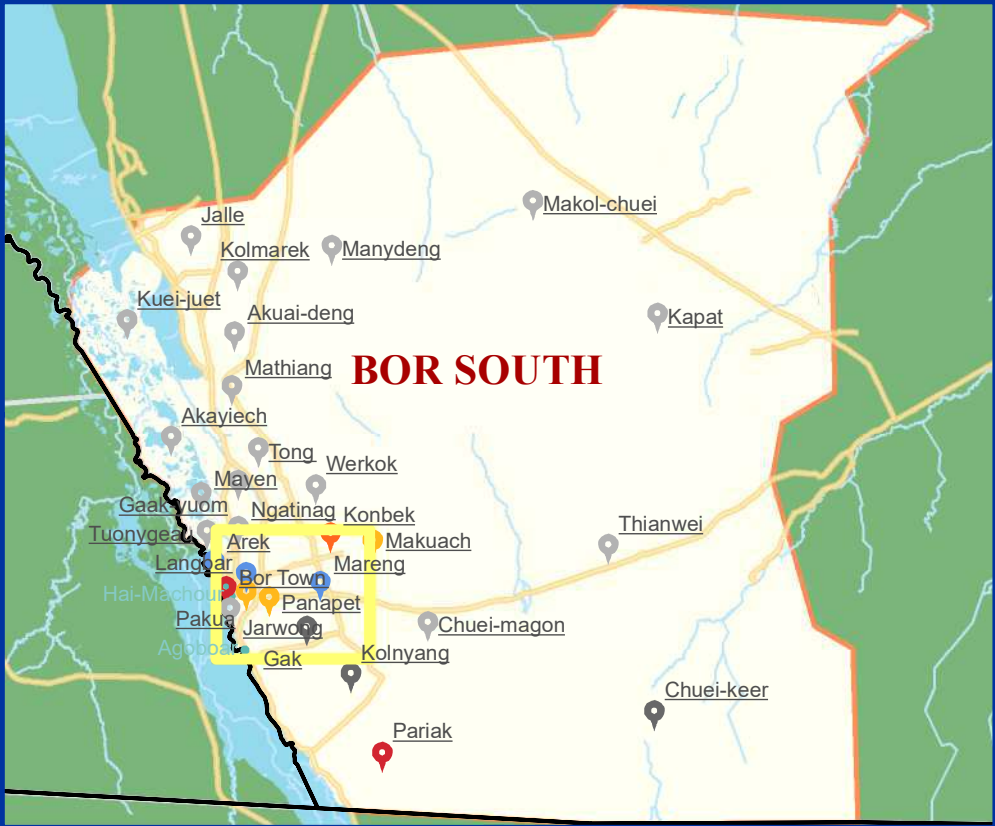
### Health Services



### Education Services



### Protection Services



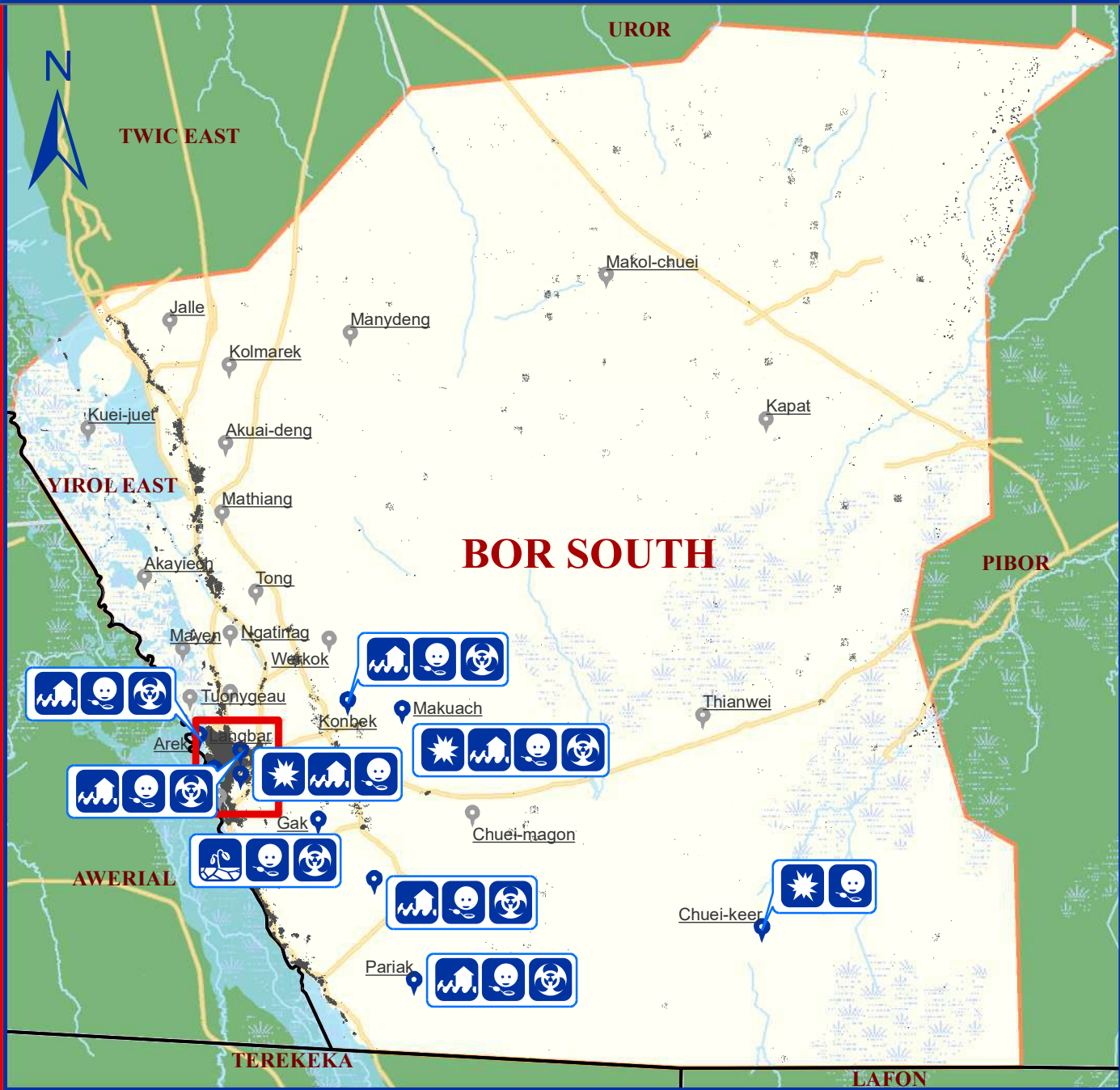
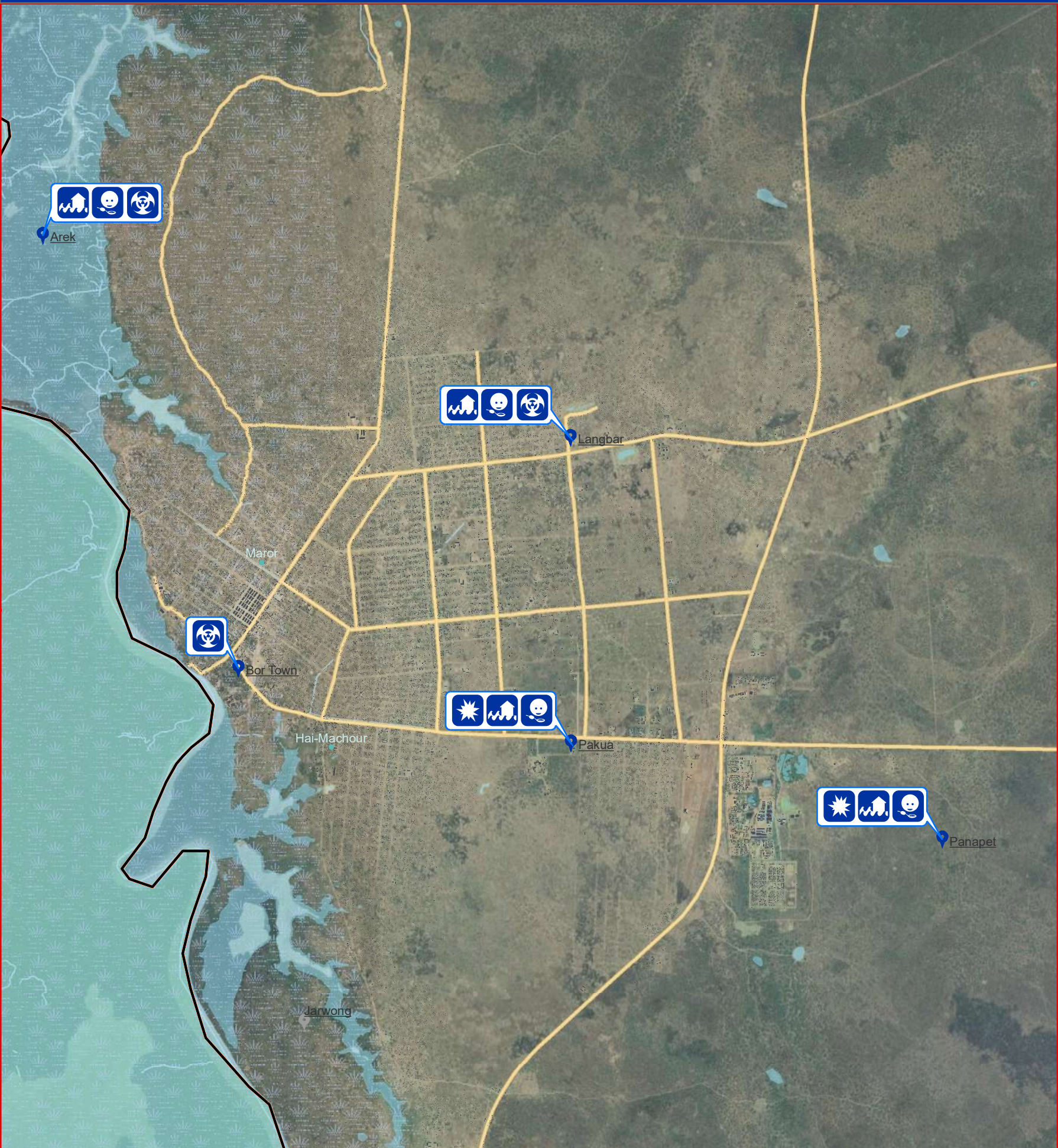
### Legend

- Barriers to Access services**
  - Not Assessed
  - Distance
- Insecurity
  - Lack of resources
  - Lack of services
- Other
  - Village
  - Roads
- State
  - Waterways
  - Waterbodies
- County of interest
  - County

The boundaries on the map do not imply official endorsement or acceptance by the Government of the Republic of South Sudan or by IOM. The map is for planning purposes only. IOM cannot guarantee that the map is error free and therefore accepts no liability for consequential or indirect damages arising from its use.

Data Source: IOM/DTM, NBS, OCHA, Maxar, OSM  
Year: 2019  
Comments & feedback: [southsudandtm@iom.int](mailto:southsudandtm@iom.int)





**Legend**

<b>Boma Coverage</b>	State	County	County of interest	Waterbodies	<b>External Threats</b>
Assessed	Not Assessed	Buildings	Marshland	Roads	Armed Conflict
<b>Boma Name</b>	Village			Waterways	Drought
					Flood
					Hunger
					Epidemics

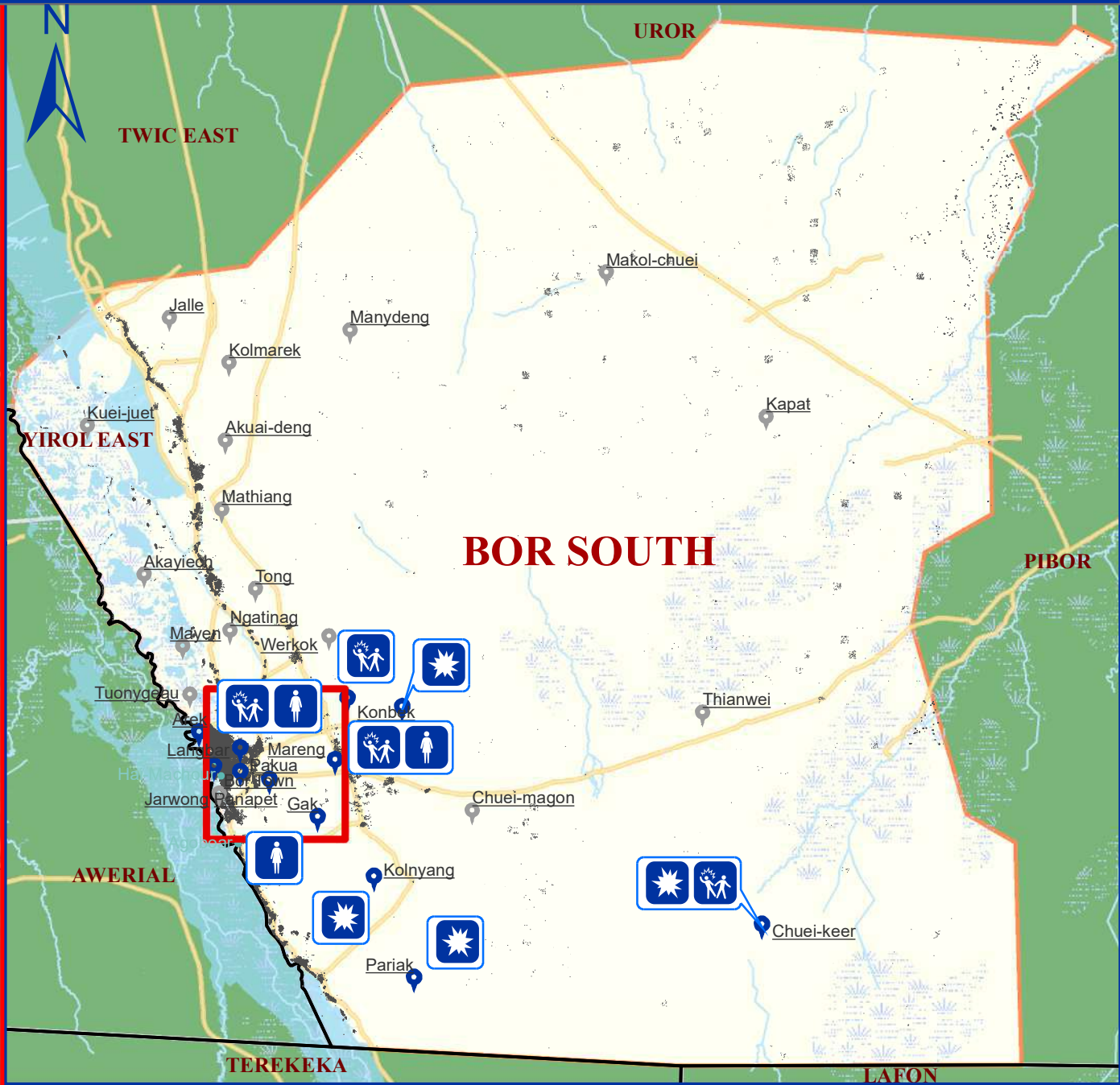
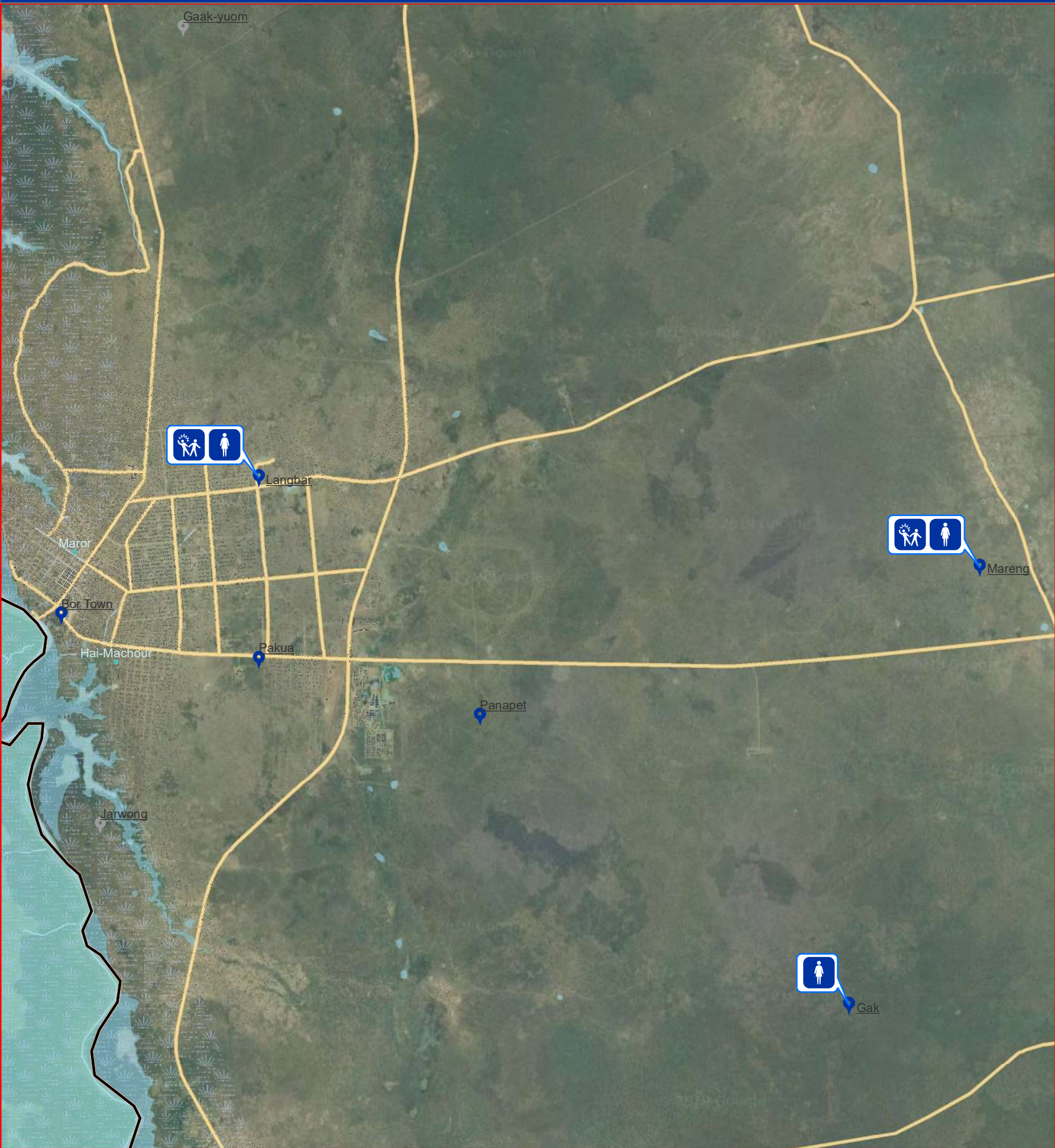
Data Source: IOM/DTM, NBS, OCHA, Maxar, OSM  
Year: 2019  
Comments & feedback: southsudandtm@iom.int

The boundaries on the map do not imply official endorsement or acceptance by the Government of the Republic of South Sudan or by IOM. The map is for planning purposes only. IOM cannot guarantee that the map is error free and therefore accepts no liability for consequential or indirect damages arising from its use.



# Internal Threats, Violations and Risks

Jonglei\_Bor South



### Legend

**Boma Coverage**

- Assessed
- Not assesses
- Boma Name
- Village

- State
- County
- County of interest
- Buildings
- Marshland

- Roads Roads
- Waterways
- Waterbodies

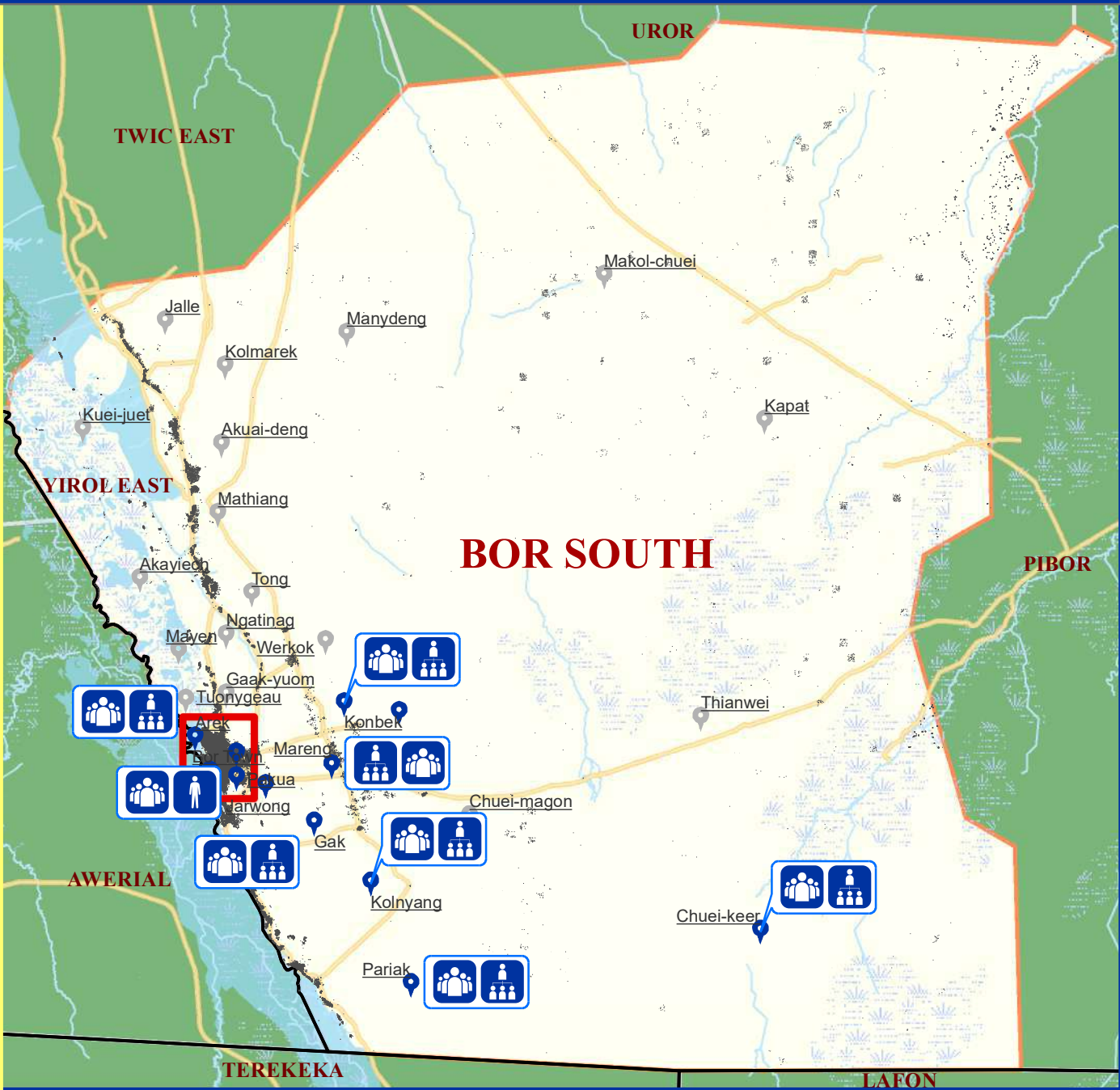
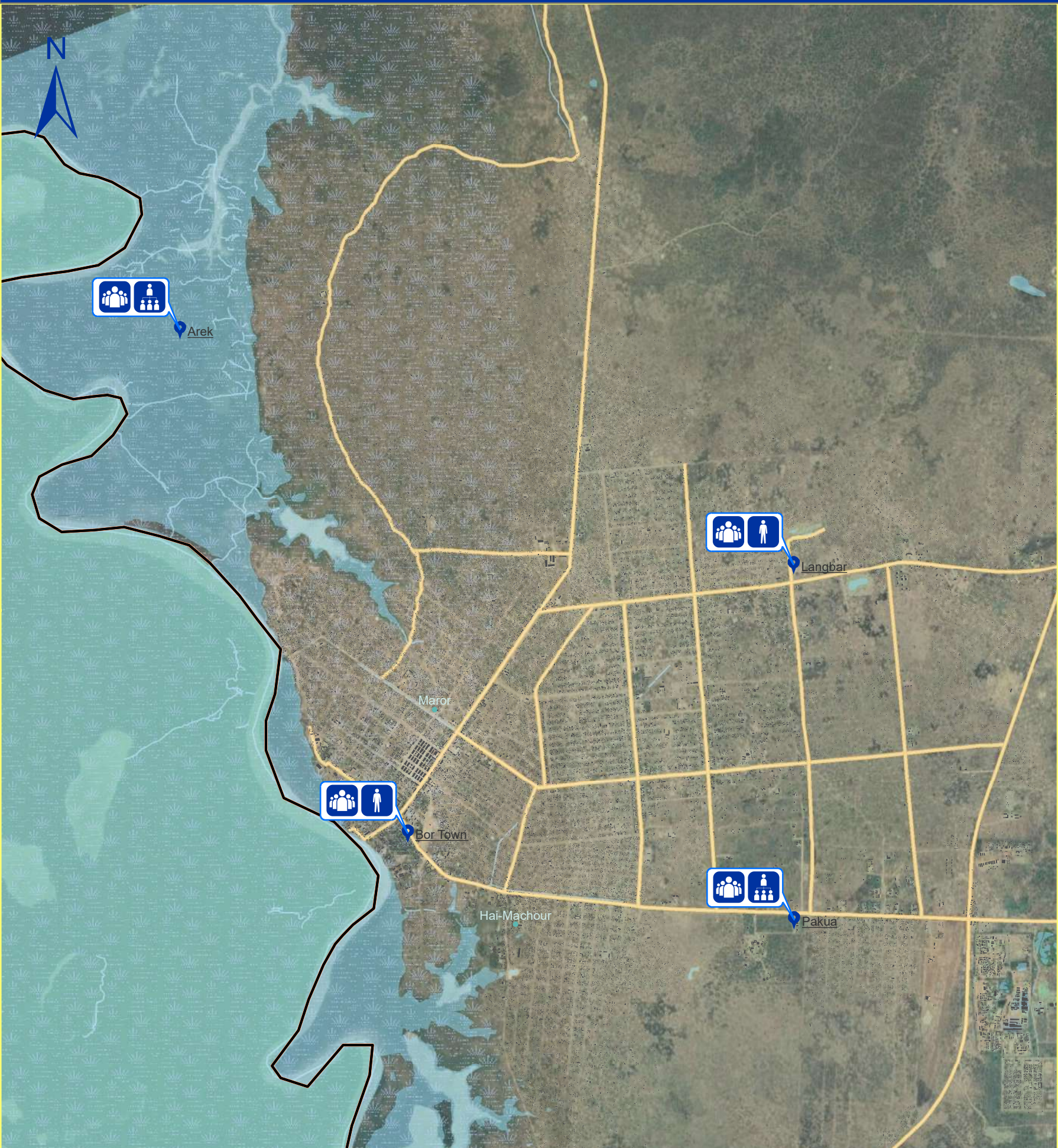
**Internal Threats**

- Local Conflict
- Domestic Violence
- Gender Based Violence

Data Source: IOM/DTM, NBS, OCHA, Maxar, OSM  
Year: 2019  
Comments & feedback: [southsudandtm@iom.int](mailto:southsudandtm@iom.int)

The boundaries on the map do not imply official endorsement or acceptance by the Government of the Republic of South Sudan or by IOM. The map is for planning purposes only. IOM cannot guarantee that the map is error free and therefore accepts no liability for consequential or indirect damages arising from its use.





**Boma Coverage**

Assessed

Not assessed

**Boma Name**

Village

State

County

County of interest

Buildings

Marshland

Roads

Waterways

Waterbodies

**Land Ownership types**

Individual

Free Communal

Ancestral

Leased Land

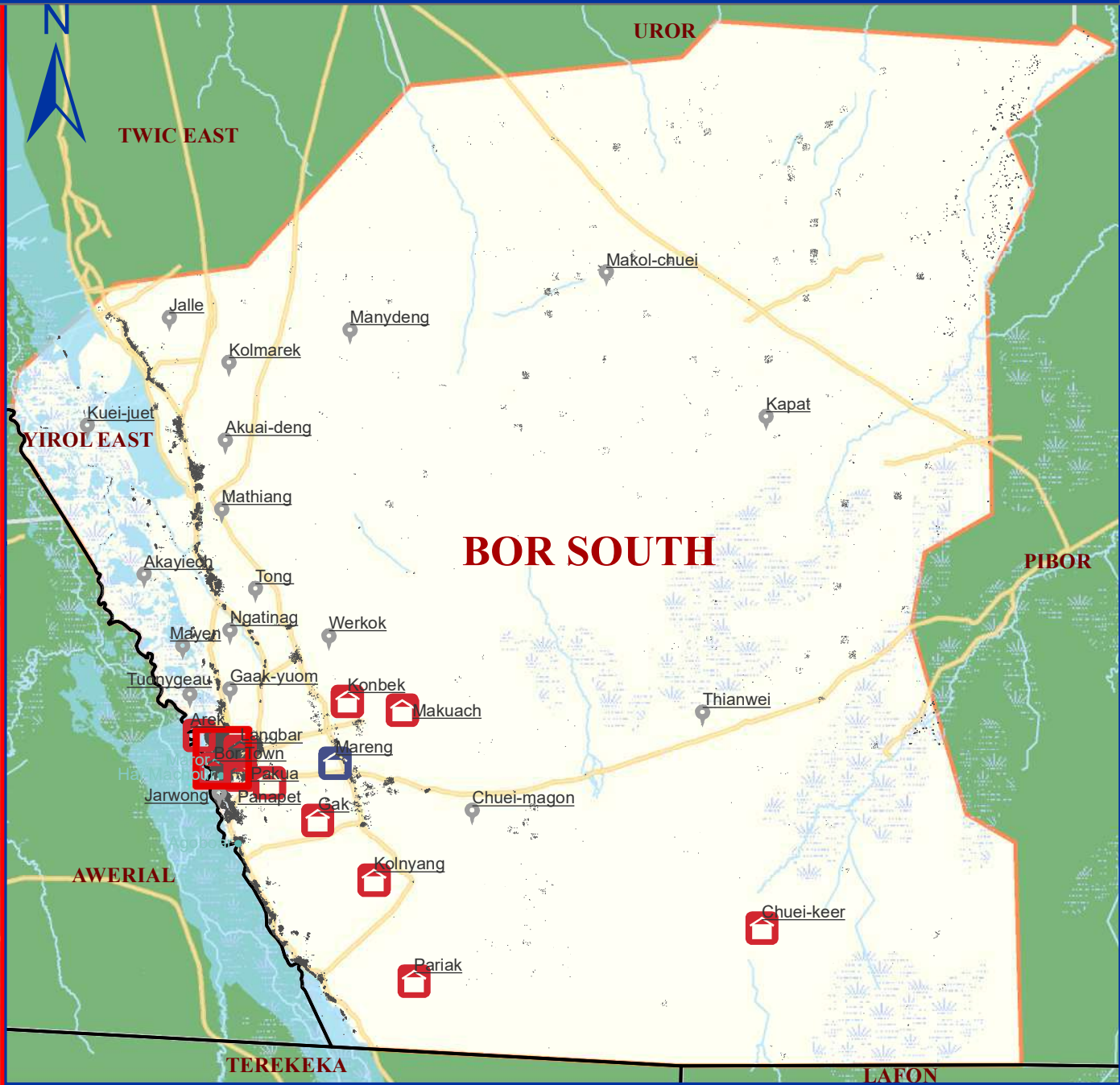
Informal Land Tenure

Data Source: IOM/DTM, NBS, OCHA, Maxar, OSM  
Year: 2019  
Comments & feedback: southsudandtm@iom.int



# Most Common Shelter Types

Jonglei\_Bor South



**Shelter Types**

- Brick walls with iron sheets roofing
- Brick walls with thatched roofing
- Mud walls with iron sheets roofing
- Tukul (mud walls with thatched roofing)
- Other Shelter Types
- Not Assessed

**Boma Name**

- Village
- State
- County
- County of interest
- Buildings
- Marshland

**Legend**

- Roads
- Waterways
- Waterbodies

Data Source: IOM/DTM, NBS, OCHA, Maxar, OSM  
Year: 2019  
Comments & feedback: [southsudandtm@iom.int](mailto:southsudandtm@iom.int)

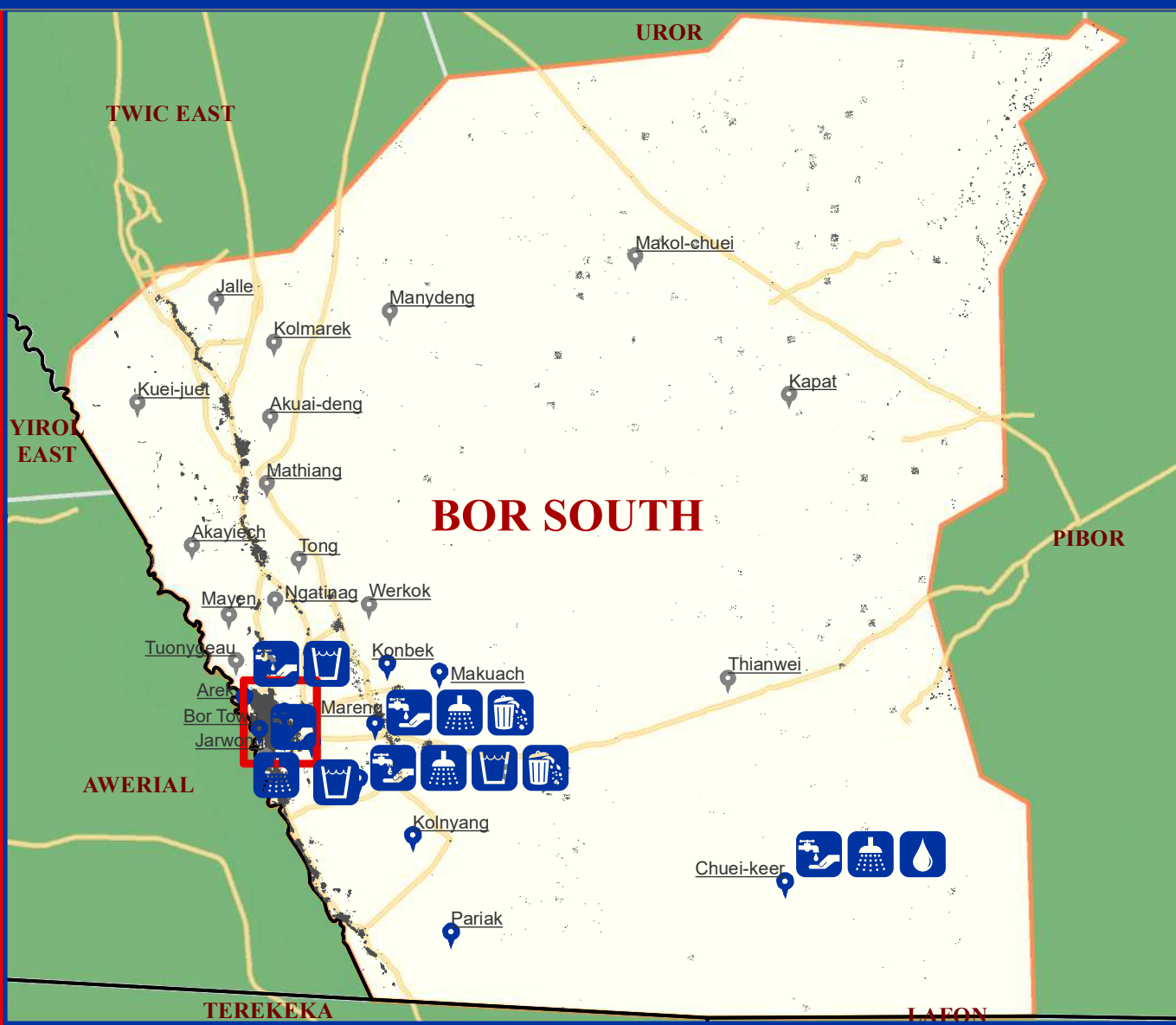
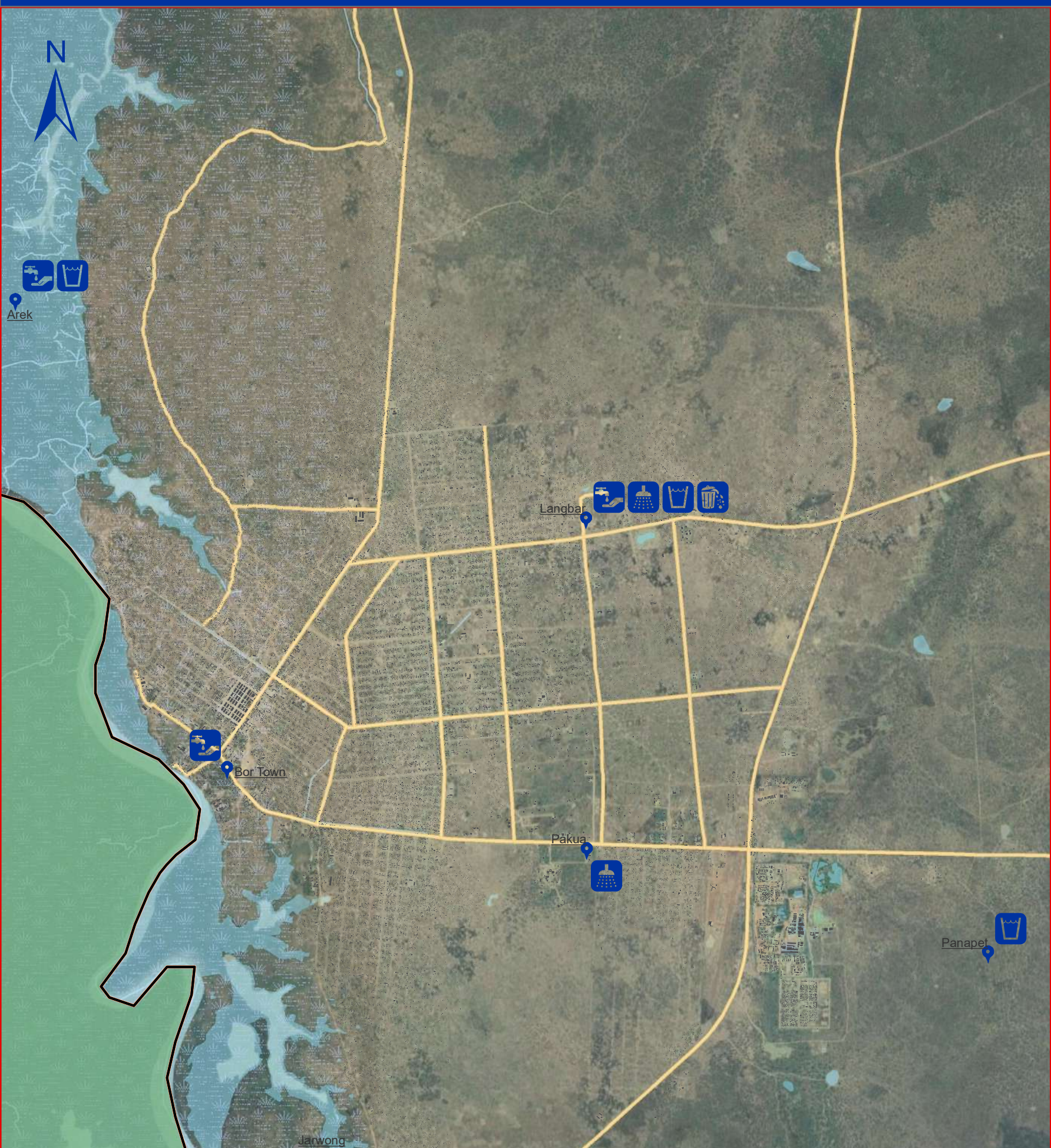


The boundaries on the map do not imply official endorsement or acceptance by the Government of the Republic of South Sudan or by IOM. The map is for planning purposes only. IOM cannot guarantee that the map is error free and therefore accepts no liability for consequential or indirect damages arising from its use.



# Received hygiene and sanitation education topic

## Jonglei\_Bor South



### Legend

**Boma Coverage**

- Assessed
- Not Assessed
- Boma Name**
- Village
- State
- County

County of interest

Buildings

Roads

Waterways

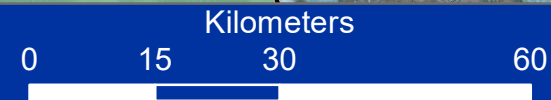
Marshland

Waterbodies

**Hygiene education topic**

- Clean hygiene
- Clean drinking water
- Hand washing
- Garbage disposal
- Other

Data Source: IOM/DTM, NBS, OCHA, Maxar, OSM  
Year: 2019  
Comments & feedback: [southsudandtm@iom.int](mailto:southsudandtm@iom.int)

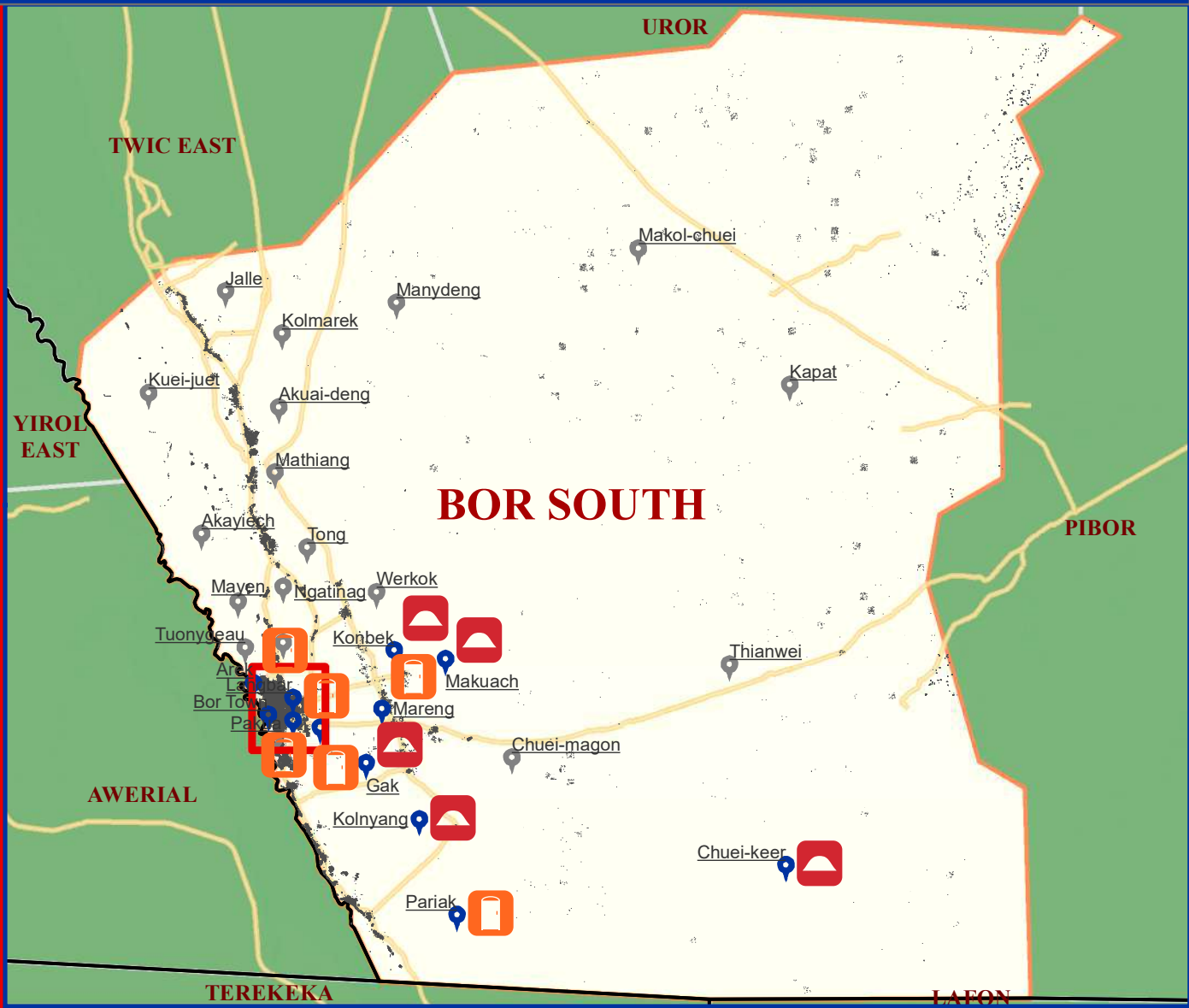


The boundaries on the map do not imply official endorsement or acceptance by the Government of the Republic of South Sudan or by IOM. The map is for planning purposes only. IOM cannot guarantee that the map is error free and therefore accepts no liability for consequential or indirect damages arising from its use.



# Most common form of defecation

Jonglei\_Bor South



### Legend

**Boma coverage**

- Assessed
- Not Assessed
- Boma Name
- Village
- State
- County

**County of interest**

- County of interest

**Buildings**

- Buildings

**Roads**

- Roads

**Waterways**

- Waterways

**Marshland**

- Marshland

**Waterbodies**

- Waterbodies

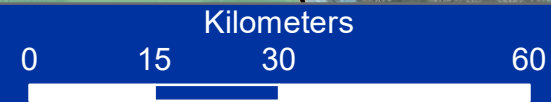
**Most common form of defecation**

- Household latrines
- Open air/bush
- Public latrines

Data Source: IOM/DTM, NBS, OCHA, Maxar, OSM

Year: 2019

Comments & feedback: [southsudandtm@iom.int](mailto:southsudandtm@iom.int)



The boundaries on the map do not imply official endorsement or acceptance by the Government of the Republic of South Sudan or by IOM. The map is for planning purposes only. IOM cannot guarantee that the map is error free and therefore accepts no liability for consequential or indirect damages arising from its use.