



EMERGENCY TRACKING TOOL (ETT)

DTM Emergency Tracking Tool (ETT) is deployed to track and provide up-to-date information on sudden displacement and other population movements

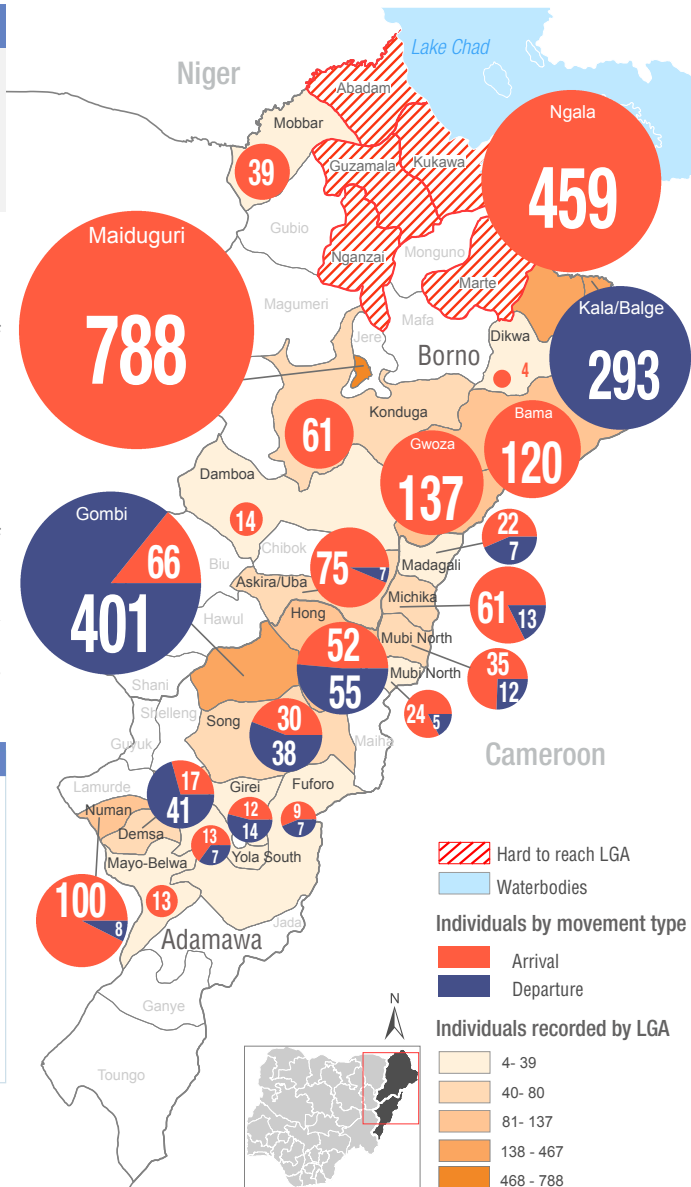
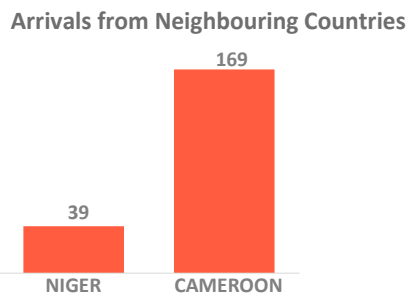
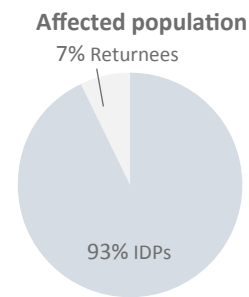
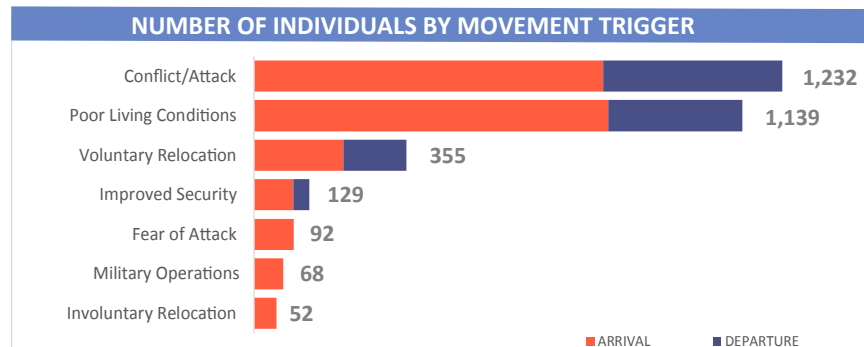
ETT Report: No. 159 | 17 - 23 February 2020

MOVEMENTS	NEW ARRIVAL SCREENING BY NUTRITION PARTNERS
<p>Arrivals: 2,151 individuals</p> <p>Departures: 916 individuals</p>	<p>213 Children (6-59 months) screened for malnutrition</p> <p>MUAC category of screened children</p> <p>Green: 190 Yellow: 18 Red: 5</p>

During 17 – 23 February 2020, a total of 3,067 movements were recorded, composed of 2,151 arrivals and 916 departures. Arrivals were recorded at locations in Maiduguri Metropolitan Council, Askira/Uba, Bama, Damboa, Dikwa, Gwoza, Konduga, Mobbar and Ngala Local Government Areas (LGAs) of Borno State. Arrivals were also recorded in Demsa, Fuforo, Girei, Gombi, Hong, Madagali, Mayo-Belwa, Michika, Mubi North, Mubi South, Numan, Song and Yola South LGAs of Adamawa State.

Departures were recorded in Askira/Uba and Kala/Balge LGAs of Borno State. Departures were also recorded in Demsa, Fuforo, Girei, Gombi, Hong, Madagali, Michika, Mubi North, Mubi South, Numan, Song and Yola South LGAs of Adamawa State.

ETT assessments identified the following movement triggers: conflict/attack (40%), poor living conditions (37%), voluntary relocation (12%), improved security (4%), fear of attack (3%), Military operations (2%) and involuntary relocation (2%).



* Movements in Kala/Balge were captured by ETT outreach staff in the LGA

SUMMARY OF MAJOR MOVEMENTS

Maiduguri: 788 arrivals were recorded in Maiduguri Metropolitan Council of Borno State. The arrivals include 725 from Dalori/Wanori ward of Konduga LGA and 63 from Gudumbali East ward of Guzamala LGA and were tracked in Maisandari ward. 92% of the new arrivals reported to have relocated due to the ongoing conflict/attack while 8% relocated due to military operations.

Gombi: 66 arrivals and 401 departures were recorded in Gombi LGA of Adamawa State. The arrivals include 38 from Zumo ward of Song LGA, 23 from Lokoro ward of Guyuk LGA and 5 from Mbula Kuli ward of Demsa LGA. 43% of the new arrivals reported to have relocated due to poor living conditions while 38% relocated due to the ongoing conflict/attack. 95% of the departures reported to have relocated due to the ongoing conflict/attack while 5% relocated due to improved security.

Ngala: 459 arrivals were recorded in Ngala LGA of Borno State. The arrivals include 374 from Rann "A" ward. Other arrivals include 51 from Makary and 34 from Blangoua of Cameroon. The arrivals were all due to poor living conditions.

Kala/Balge: 293 departures were recorded in Kala/Bale LGA of Borno State. The 293 departures were from Rann "A" ward. The arrivals were all due to poor living conditions.

NEW ARRIVAL MALNUTRITION SCREENING SUMMARY (CHILDREN 6-59 MONTHS)

An exhaustive nutrition screening using monitoring of symptoms of acute malnutrition mid upper arm circumference (MUAC) and Oedema was conducted by Nutrition Sector partners for 213 children of 6-59 months. Of the 213 children screened, the MUAC reading was: 5 children (2 from inaccessible and 3 from an accessible area) in the Red category, 18 in the Yellow category and 190 measured in the Green category. No cases of Oedema were reported in the 4 LGAs that reports were received from.

The results also include 61 children from neighbouring Cameroon and Republic of Niger. Of these arrivals, 8 children moved to Bama, 8 to Gwoza, 9 to Mobbar and 36 to Ngala); one of the 61 arrivals were screened into the Red category, 57 in the Green category and 3 in the Yellow category. All children found with acute malnutrition have been admitted for treatment.

LGA	MUAC Categories						Total
	Green ($\geq 12.5\text{cm}$)		Yellow (11.5 cm - 12.5cm)		Red (<11.5cm)		
	Inaccessible	Accessible	Inaccessible	Accessible	Inaccessible	Accessible	
Bama	15	12	1	0	2	0	30
Gwoza	1	28	0	0	1	0	30
Konduga	0	15	0	1	0	0	16
Mobbar	0	8	0	1	0	0	9
Monguno	0	8	0	5	0	0	13
Ngala	0	103	0	10	0	2	115
Total	16	174	1	17	3	2	213

■ Nourished
 ■ Moderate Acute Malnutrition (MAM)
 ■ Severe Acute Malnutrition (SAM)

Please note, the data presented are not surveillance results and should be interpreted with caution.

Table 1. Details of movements by locations of assessment and locations of arrival / departure - only movements with at least 14 persons are listed below

Tracking Location			Movement Location			ARRIVAL	DEPARTURE	Grand Total
STATE	LGA	WARD	STATE2	LGA2	WARD2			
ADAMAWA	DEMSA	BILLE	ADAMAWA	NUMAN	SABON PEGI	-	22	22
		DONG		DEMSA	DONG	17	-	17
	GIREI	GIREI I	BORNO	GWOZA	PULKA/BOKKO	-	14	14
		GARKIDA		GIREI	GIREI I	-	380	380
	GOMBI	GOMBI SOUTH	ADAMAWA	MICHIKA	MICHIKA I	-	21	21
				SONG	ZUMO	38	-	38
				GUYAKU	GUYUK	23	-	23
	HONG	GARAHA	ADAMAWA	HONG	HONG	-	20	20
		GAYA		GOMBI	GARKIDA	41	-	41
		SHANGUI		HONG	DAKSIRI	-	16	16
	HONG	UBA	ADAMAWA	GIREI	GIREI I	-	19	19
	MADAGALI	GULAK		MADAGALI	-	17	17	
	MADAGALI	SHELM I / SUKUR/ VAPURA	ADAMAWA	MADAGALI	GULAK	-	22	22
				MADZI	HONG	GARAHA	14	-
	MICHIKA	MINKISI/ WURO NGIKI	ADAMAWA	HONG	BANGSHIKA	18	-	18
				YOLA NORTH	LIMAWA	18	-	18
	MUBI NORTH	VIMTIM	ADAMAWA	MUBI NORTH	MAYO BANI	16	-	16
		YELWA		MADAGALI	K/WUROGAYANDI	19	-	19
	MUBI SOUTH	NASSARAWO	ADAMAWA	GOMBI	GOMBI NORTH	17	-	17
	NUMAN	BOLKI	ADAMAWA	NUMAN	BOLKI	51	-	51
NUMAN II		BOLKI			28	-	28	
SONG	ZUMO	ADAMAWA	GOMBI	GOMBI SOUTH	-	38	38	
BORNO	ASKIRA / UBA	LASSA	LAGOS	OSHODI/ ISOLO	OSHODI/BOLADE	41	-	41
	BAMA	SHEHURI / HAUSARI / MAIRI	BORNO	BAMA	DIPCHARI/JERE/DAR-JARMAL/KOTEMBE	32	-	32
					SABSABWA/SOYE/BULONGU	71	-	71
	DAMBOA	DAMBOA	BORNO	DAMBOA	AZUR/MULTE/FORFOR	14	-	14
	GWOZA	GWOZA WAKANE / BULABULIN	ADAMAWA	GIREI	GIREI I	26	-	26
	GWOZA	PULKA/BOKKO	CAMEROON	MAROUA	KIRAWA/JIMINIS	43	-	43
	KALA/BALGE	RANN "A"	BORNO	NGALA	NGALA WARD	-	293	293
	KONDUGA	AUNO / CHABBOL	BORNO	KALA BALGE	RANN "A"	48	-	48
	MAIDUGURI M. C.	MAISANDARI	BORNO	GUZAMALA	GUDUMBALI EAST	63	-	63
				KONDUGA	DALORI/WANORI	725	-	725
	MOBBAR	DAMASAK	NIGER REPUBLIC	DIFFA	CHETIMARI	39	-	39
	NGALA	NGALA WARD	BORNO	KALA/BALGE	RANN "A"	374	-	374
			CAMEROON	LOGONE-ET-CHARI	BLANGOUA	34	-	34
	NGALA				MAKARY	51	-	51

The depiction and use of boundaries, geographic names, and related data shown on maps and included in this report are not warranted to be error free nor do they imply judgment on the legal status of any territory, or any endorsement or acceptance of such boundaries by IOM. MUAC data is provided by UNICEF

For more information or to report an alert, please contact:

Henry Kwenin, DTM Project Coordinator: hkwenin@iom.int | +234 903 8852 524

Dave Bercasio, Emergency Coordinator: dbercasio@iom.int | +234 907 5070 001

DTM information products: <http://nigeria.iom.int/dtm>

