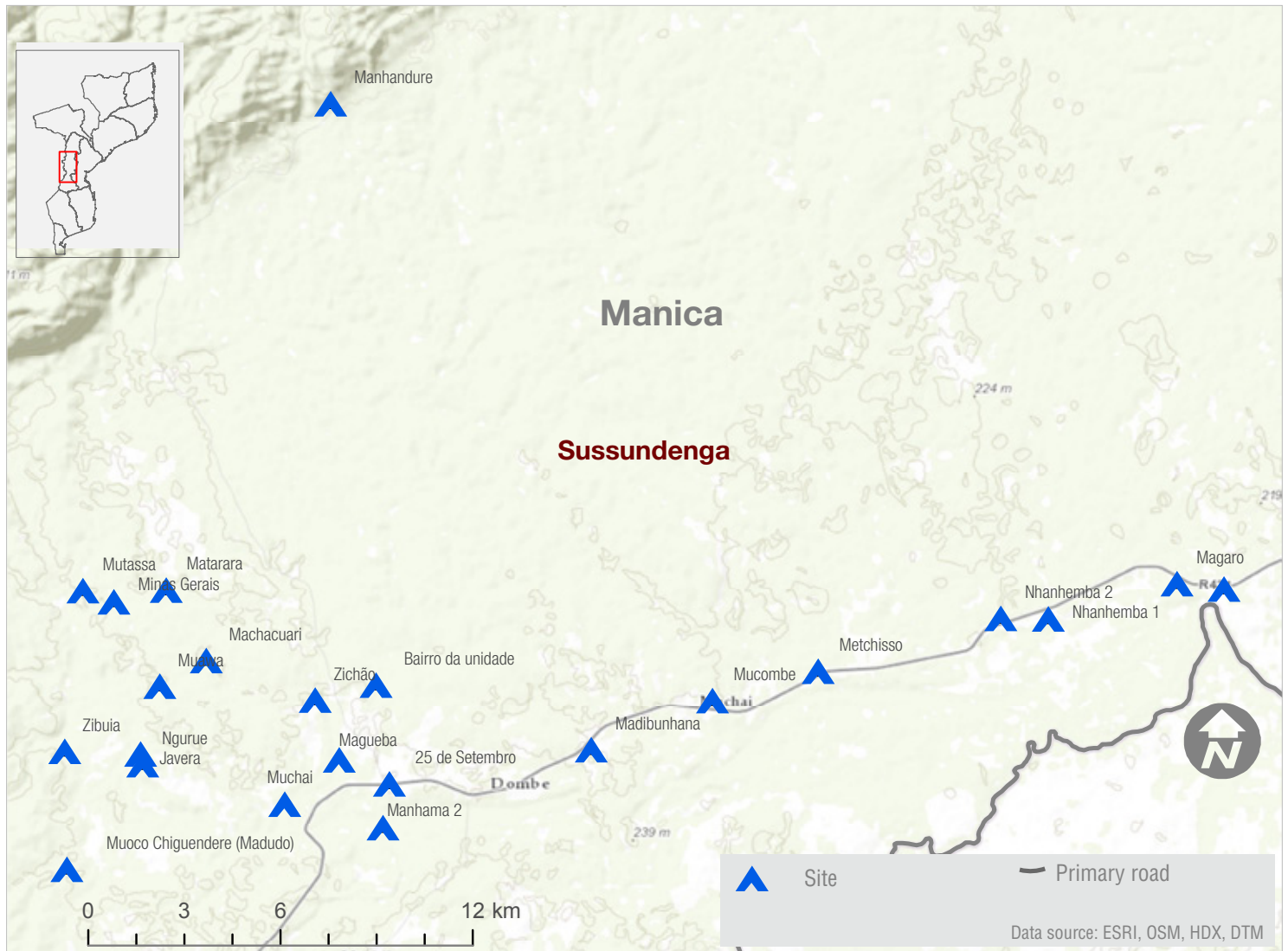


From 16 to 19 February 2020, the International Organization for Migration (IOM) in collaboration with National Disasters Management Institute (INGC) conducted rapid assessment in resettlement sites across Manica province after the heavy rainfall from 10 to 15 February 2020.

In the 31 resettlement sites assessed in Manica province, 251 emergency shelters and 259 tents were completely destroyed due to the heavy rain. IOM identified additional 357 shelters (emergency shelters and tents) with major damages to walls and roofing, 528 shelters partially damaged, 186 latrines and 5 water point damaged.

Three schools were damaged, in Chibue, Chibue Mateo and Nhanhembra 1 resettlement sites in Sussundenga of Manica province. Two child-friendly spaces were damaged in Matarara resettlement site.



For more information or to report an alert, please contact:

DTM Mozambique, DTMMozambique@iom.int

Resettlement Sites Affected by Heavy Rain (10 - 15 February 2020)

Province	District	Location Details Resettlement Site	Complete Structure Damage		Partial Damage		Damaged Latrine	Damaged Water Points	% of Households Affected by Site
			Emergency Shelters	Tent	Major Structure Damage	Minor Damage			
Manica	Sussundenga	Chibue	99	-	-	50	60	-	98
		Chibue Mateo	20	-	-	35	42	-	56
		Chiruca	-	-	-	3	3	-	10
		Gudza	-	-	-	31	-	-	22
		Javera	3	-	-	15	-	-	60
		Machacuari	3	-	-	17	-	1	91
		Madibunhana	-	-	-	16	-	-	15
		Magaro	-	196	-	-	16	1	97
		Magueba	35	-	-	27	7	-	93
		Manhama 1	12	6	8	38	15	-	74
		Manhama 2	12	38	10	5	9	-	25
		Matarara	-	-	22	-	2	-	11
		Metchisso	23	-	3	35	2	-	28
		Minas Gerais	-	-	-	9	-	-	6
		Muawa	12	4	12	152	-	-	69
		Muchai	-	4	-	35	8	-	70
		Muchambanha	8	-	-	39	-	-	84
		Mucombe	-	-	-	1	-	-	1
		Muoco Chiguendere (Madudo)	-	-	-	2	-	1	3
		Ngurue	-	-	137	-	-	-	100
		Nhamississua	-	-	-	18	-	-	39
		Nhanhembra 1	22	-	-	-	22	2	4
		Zibuia	2	-	-	-	-	-	3
Zichão	-	-	129	-	-	-	100		
	Sussundenga Total		251	248	321	528	186	5	
Manica Total			251	248	321	528	186	5	