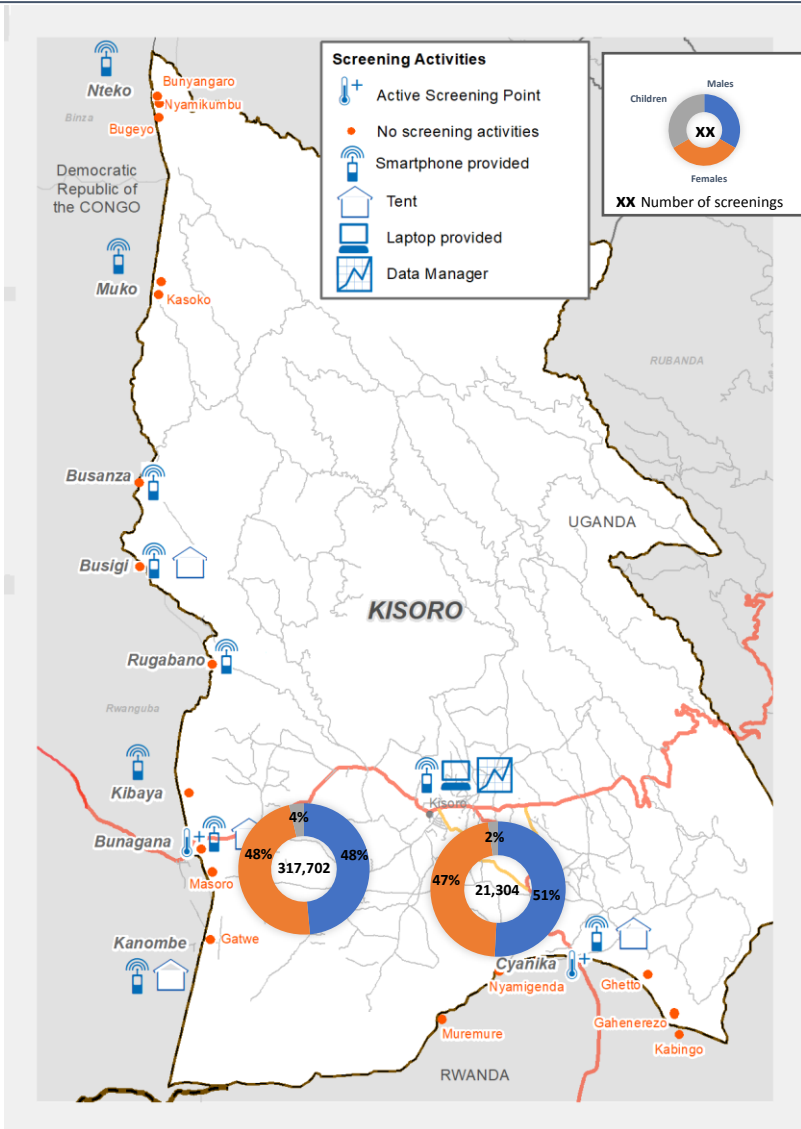
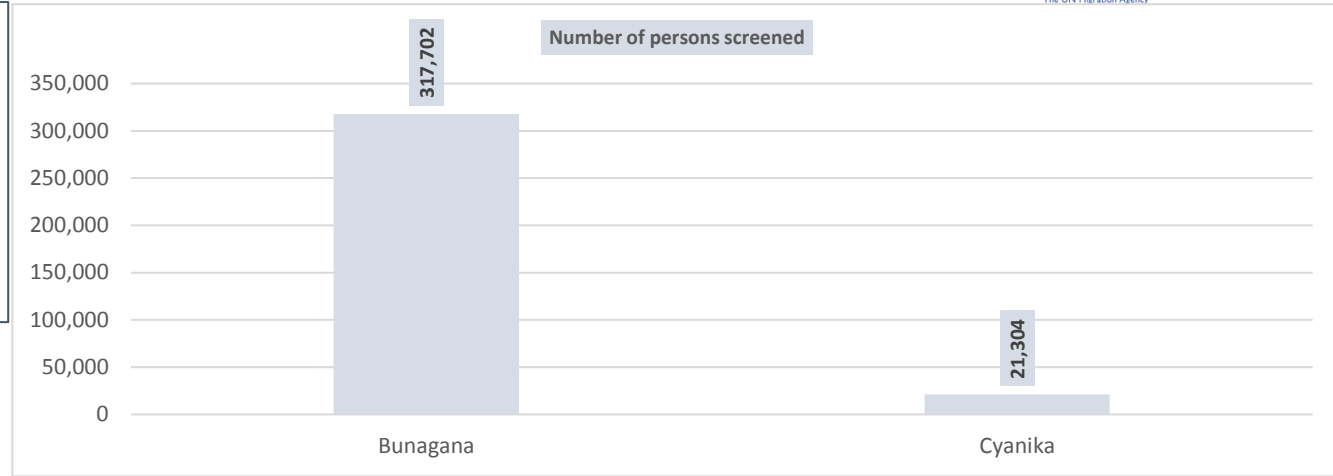
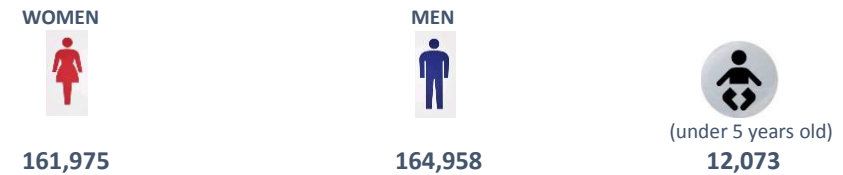


Number of (from 1 <sup>st</sup> to 31 <sup>st</sup> January 2020)		
<b>Screenings</b>  <b>339,006</b>	<b>Persons isolated</b>  <b>0</b>	<b>Persons referred</b>  <b>0</b>
-----		
<b>Cumulative since 08 April 2019</b>		
<b>3,462,084</b>	<b>367</b>	<b>6</b>



### Total number of screenings, disaggregated by gender and age



### OVERVIEW

#### Screening operation

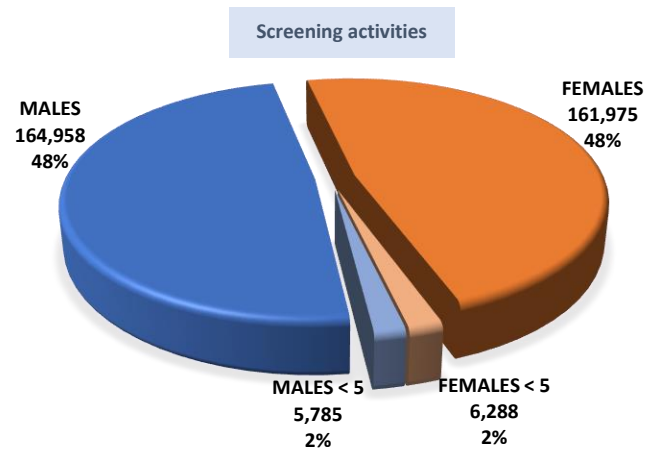
- Two (2) of the referenced Points of Entry (PoEs) had active screening operations during the reporting period. Cyanika and Bunagana are official PoEs at the border with the Democratic Republic of the Congo (DRC) and Rwanda respectively.
- A total of 339,006 screenings were completed at the two (2) PoEs.
- Bunagana registered the highest number of persons screened (317,702) accounting to approximately 94% of the people screened.

#### Demographic

- Ratio of adult males and adult females 48:48.
- 4% of the flow were children under 5 years old.



Ebola Virus Disease PoE Preparedness at Screening Points – KISORO District



The type of flows is influenced by the land configuration (mountainous, forest...) and the type of PoE (formal or informal). The type of access road (main road or rural road) influences the type of flow as well as the reason for travelling. The presence of markets and agricultural activities is a pull factor and may attract more adult women than adult men.