

Primary Route	Affected pop
Waterway	976 - 5.000
Waterbody	5.001 - 10.000
Country	10.001 - 20.000
Province	20.001 - 30.000
District	30.001 - 67.792
IDPs	Returnees

ZIMBABWE - Affected population

DTM Round 3 - IDPs and Returnees presence

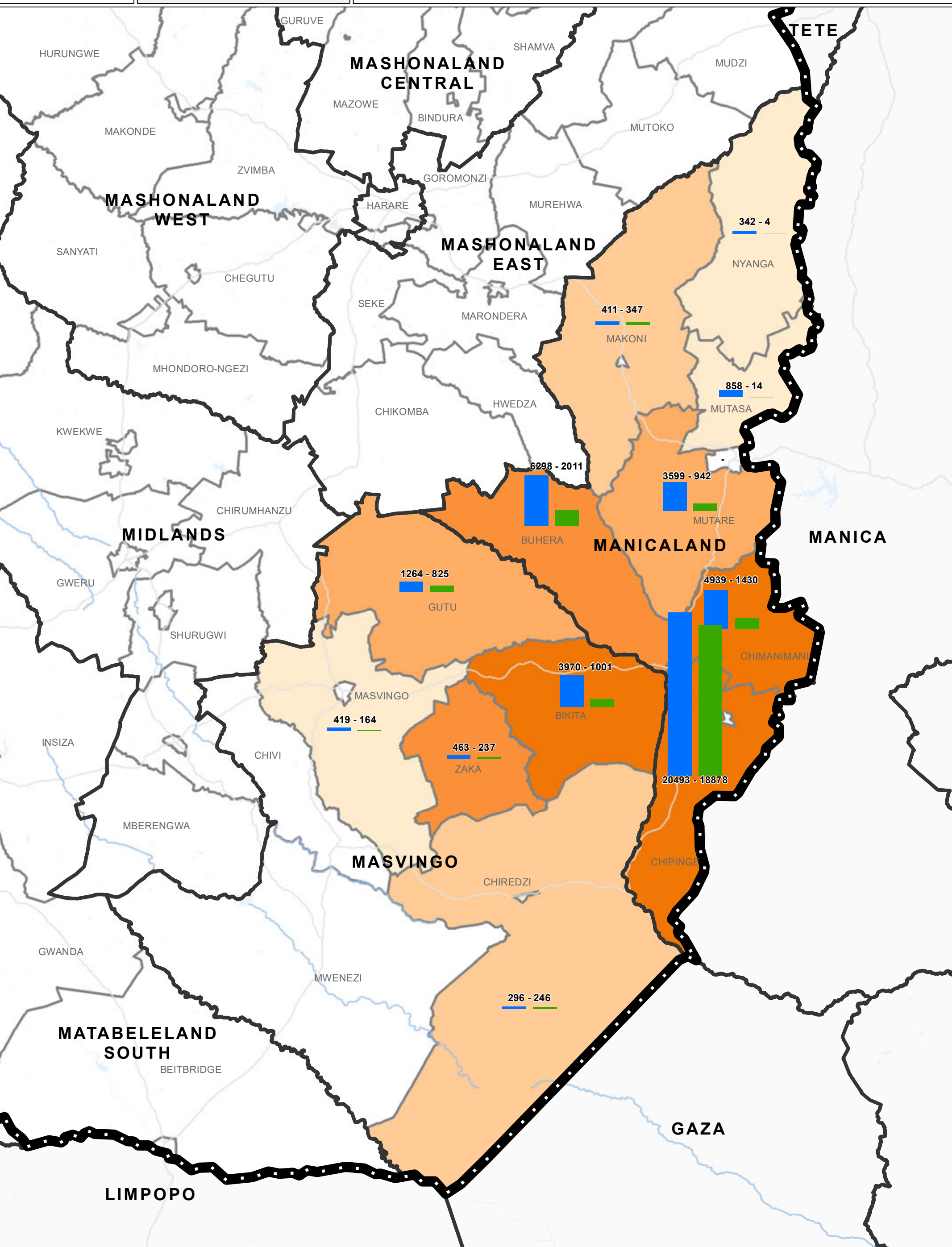
1:1,750,000 1 cm = 18 km

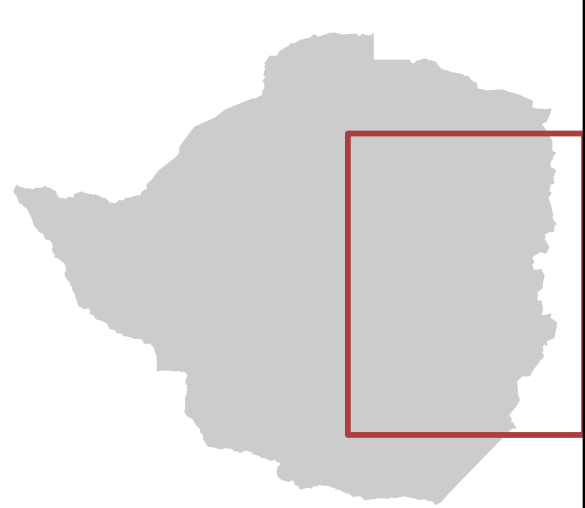
0 25 50 100 Kilometers

Map Production Date : 06 February 2020
www.iom.int | dtmsupport@iom.int

Source Data : ESRI, IOM, OCHA, UNJLC

Disclaimer : This map is for illustration purposes only. Names and boundaries on this map do not imply official endorsement or acceptance by IOM.





	Primary Road	Affected Pop.	
	Waterway		< 500
	Waterbody		501 - 1.000
	Province		1.001 - 2.000
	District		2.001 - 3.000
	Ward		3.001 - 11.607
	IDPs presence		< 50
			> 50

ZIMBABWE - DTM Round 3

Affected population at ward level as of December 2019



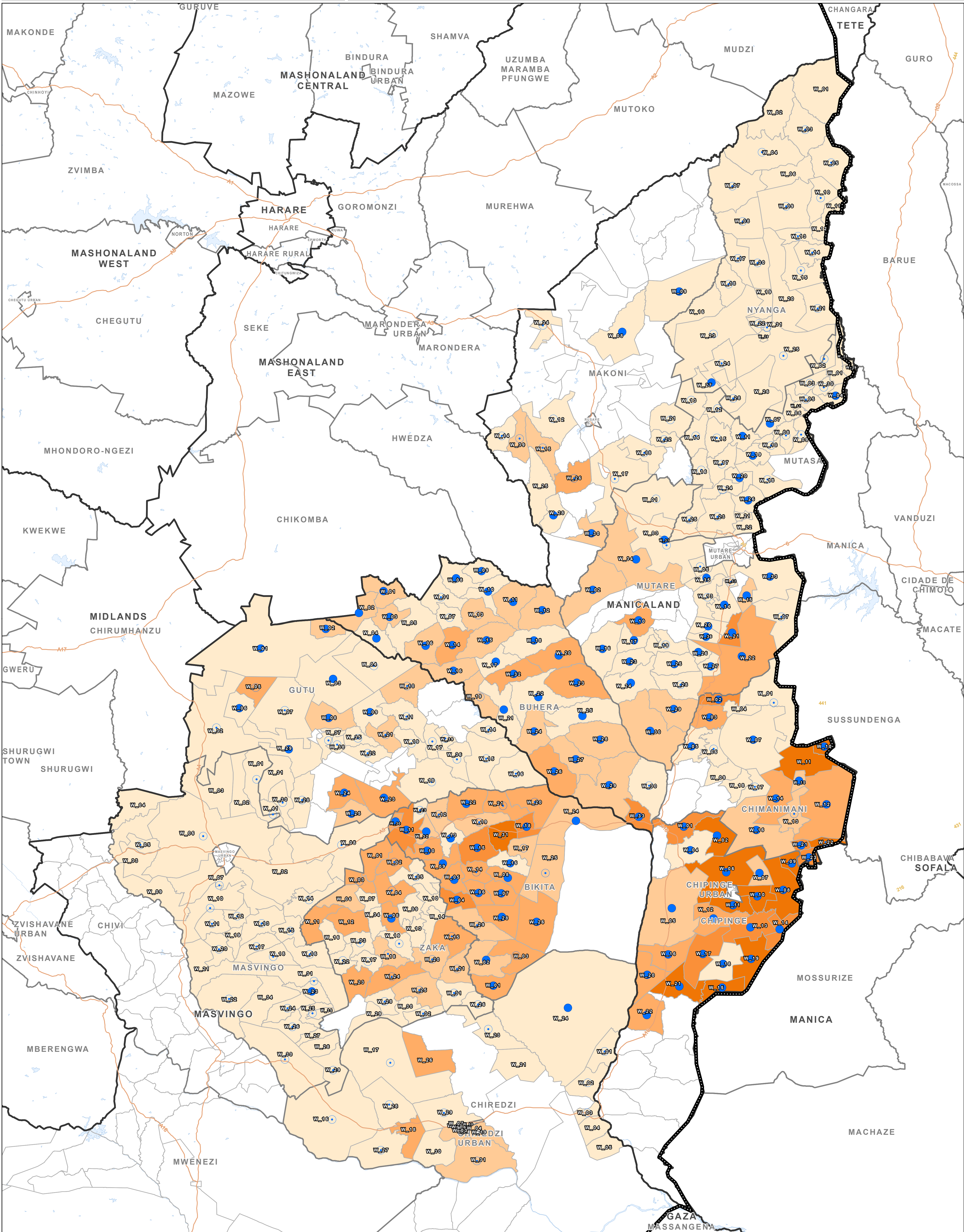
1:650,000 1 cm = 7 km

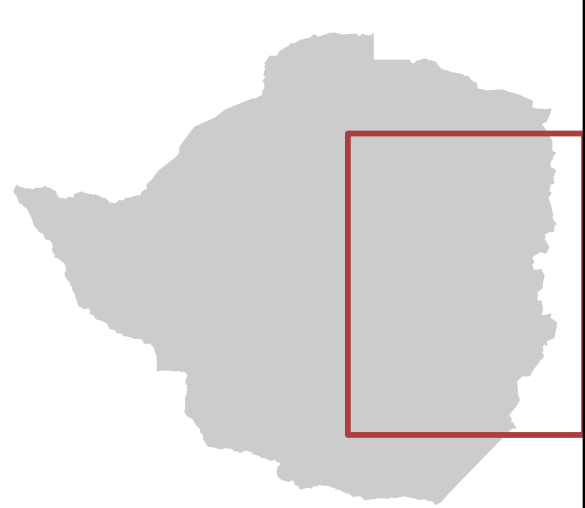
Kilometers 0 15 30 60

Map Production Date : 07 February 2020
www.iom.int | dtmsupport@iom.int

Source Data : ESRI, IOM, National Authorities, OSM

Disclaimer : This map is for illustration purposes only. Names and boundaries on this map do not imply official endorsement or acceptance by IOM.





Primary Road (Orange line)
Waterway (Blue line)
Waterbody (Light blue area)
Province (Thick black outline)
District (Thin black outline)
Ward (Thin grey outline)

IDPs presence

- < 100 (Lightest blue)
- 101 - 250 (Light blue)
- 251 - 500 (Medium blue)
- 501 - 1.000 (Dark blue)
- 1.001 - 5.081 (Darkest blue)

Returnee presence

- < 50 (Light green circle)
- > 50 (Dark green circle)

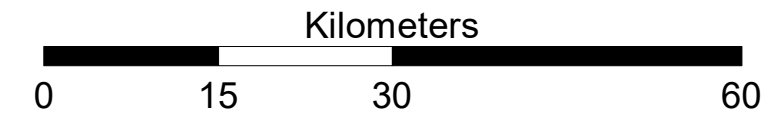
ZIMBABWE - DTM Round 3

IDPs presence at ward level as of December 2019



Map Production Date : 07 February 2020
www.iom.int | dtmsupport@iom.int

1:650,000 1 cm = 7 km



Source Data : ESRI, IOM, National Authorities, OSM

Disclaimer : This map is for illustration purposes only. Names and boundaries on this map do not imply official endorsement or acceptance by IOM.

