

ZIMBABWE — TROPICAL CYCLONE IDAI RESPONSE BASELINE ASSESSMENT — ROUND 3 MANICALAND AND MASVINGO PROVINCES, DECEMBER 2019



Discussion with key informants from host community and IDPs in Chimanimani district, Ward 16, November 2019

Tropical Cyclone Idai made landfall in Zimbabwe on 15 March 2019, the country experienced floods and sustained heavy rains caused by the weather system. Through November and December 2019 IOM, in close coordination with the Government of Zimbabwe and its partners, conducted the DTM Baseline Assessments in two provinces — Manicaland, and Masvingo. The following report provides information on the number of IDPs, returnees, shelter conditions, infrastructure damage, and populations living with host communities. An analysis of priority needs is also provided, to aid the targeting and design of future assessments.

SUMMARY

During the month of November and December 2019, IOM DTM carried a baseline assessment in 12 districts affected by Cyclone Idai in Manicaland and Masvingo provinces to monitor and track the locations and priority needs of the affected populations. A total of 114 enumerators (61 female and 53 male) were engaged and carried out assessments in 336 wards.

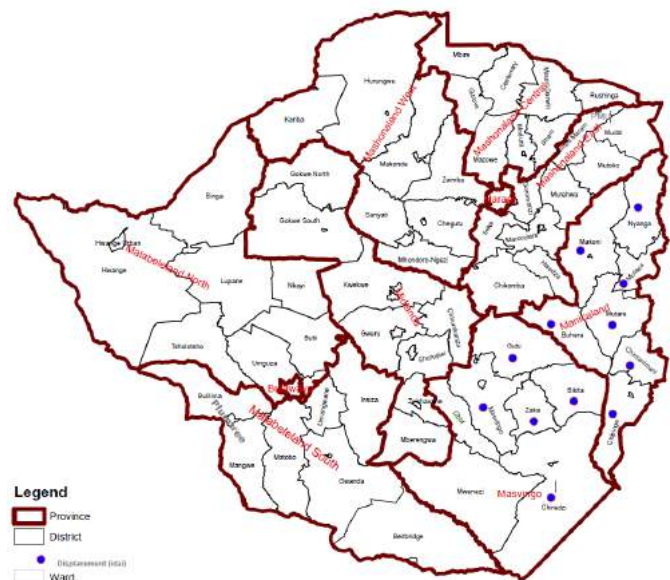
Overall, there is still 43,352 individuals displaced due to cyclone Idai located in 1,571 locations, with the majority living in host communities within the two provinces. An estimated 10,097 homes were completely destroyed, while 37,483 homes were partially destroyed. In total 24,106 households are said to be still in need of shelter support, with only 3,047 having received emergency shelter support since the cyclone made its landfall in Zimbabwe.

Baseline assessments were done at ward level covering through focus group discussions with key informants at the ward centres in coordination with the Department of Civil Protection. Enumerators were identified at district level and trained to carry out data collection.

This report presents descriptive analysis through province and district profiles and summary statistics. In addition, a complete dataset with presented findings on ward level is available on the following [link](#), with a corresponding [map](#).

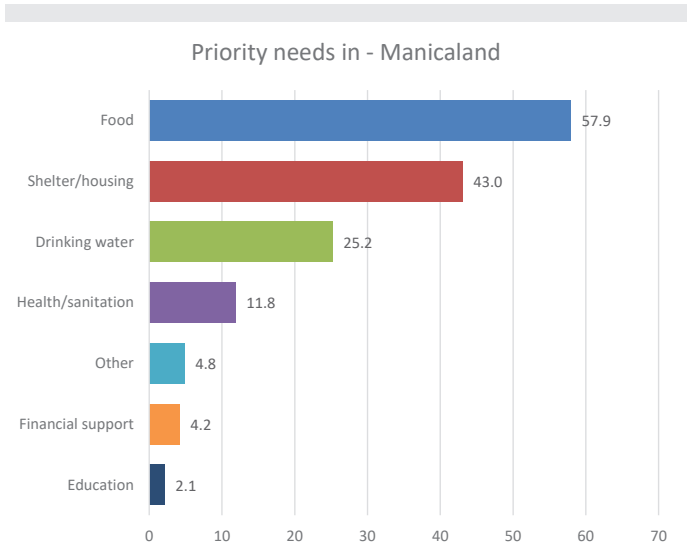
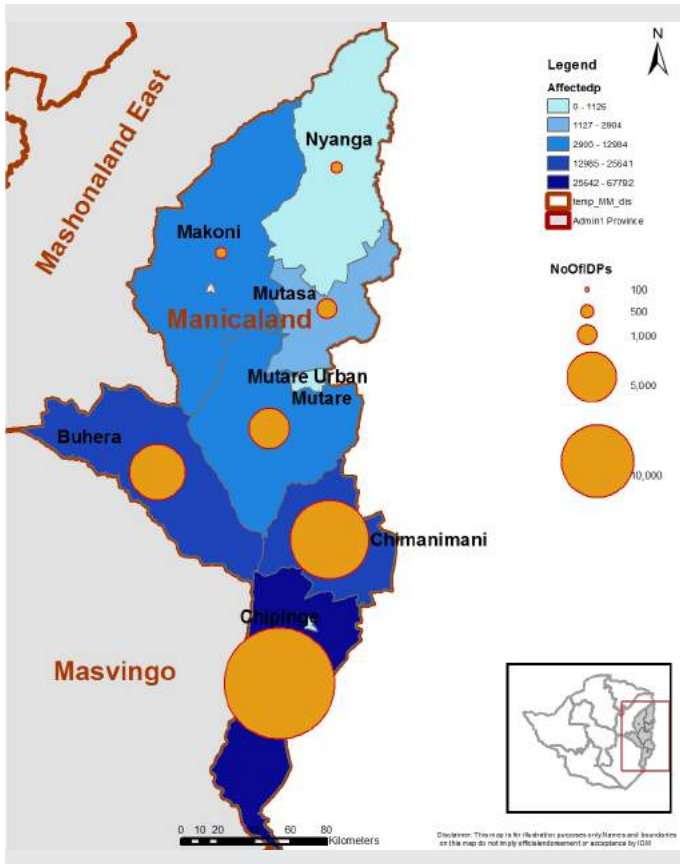
TABLE OF CONTENTS

	Page Number
Manicaland Province Profile	3
Manicaland Province Statistics	4
Buhera District Profile	5
Chimanimani District Profile	6
Chipinge District Profile	7
Makoni District Profile	8
Mutare District Profile	9
Mutasa District Profile	10
Nyanga District Profile	11
Map of Affected Populations	12
Masvingo Province Profile	13
Masvingo Province Statistics	14
Bikita District Profile	15
Chiredzi District Profile	16
Chiredzi Urban District Profile	17
Gutu District Profile	18
Masvingo District Profile	19
Zaka District Profile	20



Map of Zimbabwe, with districts covered by DTM Baseline Round 3 marked

MANICALAND



The top three needs for each ward have been aggregated by relative weight to provide a provincial analysis. The top priority is food, and shelter/housing is the second most cited need. The third highest need is drinking water, followed by health/sanitation. The relative gap in the aggregated needs implies significantly more urgency for food and shelter relief. The remaining options have been seldom mentioned by those participating in the baseline assessment.

Number of damaged facilities

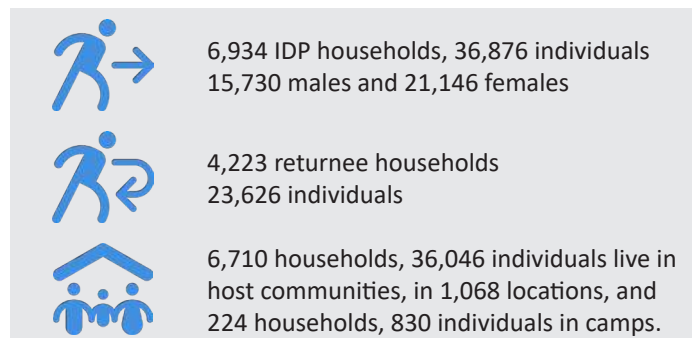
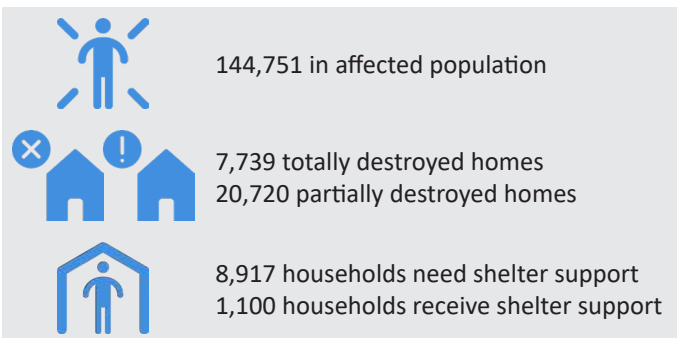
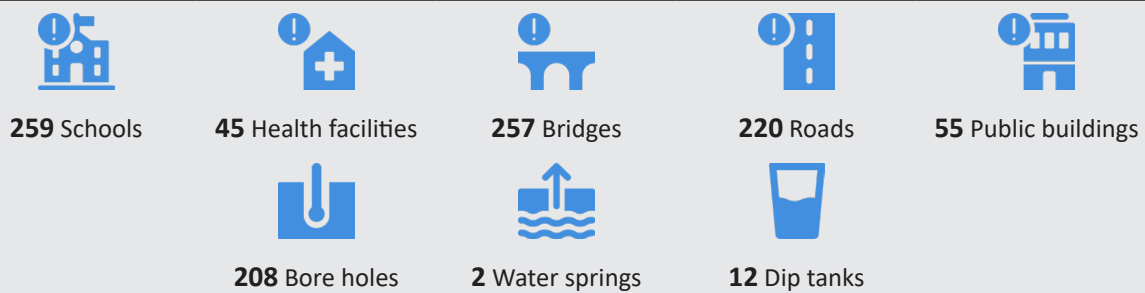


TABLE — MANICALAND

SUMMARY STATISTICS BY DISTRICT, DTM BASELINE WARD ASSESSMENTS (DECEMBER 2019)

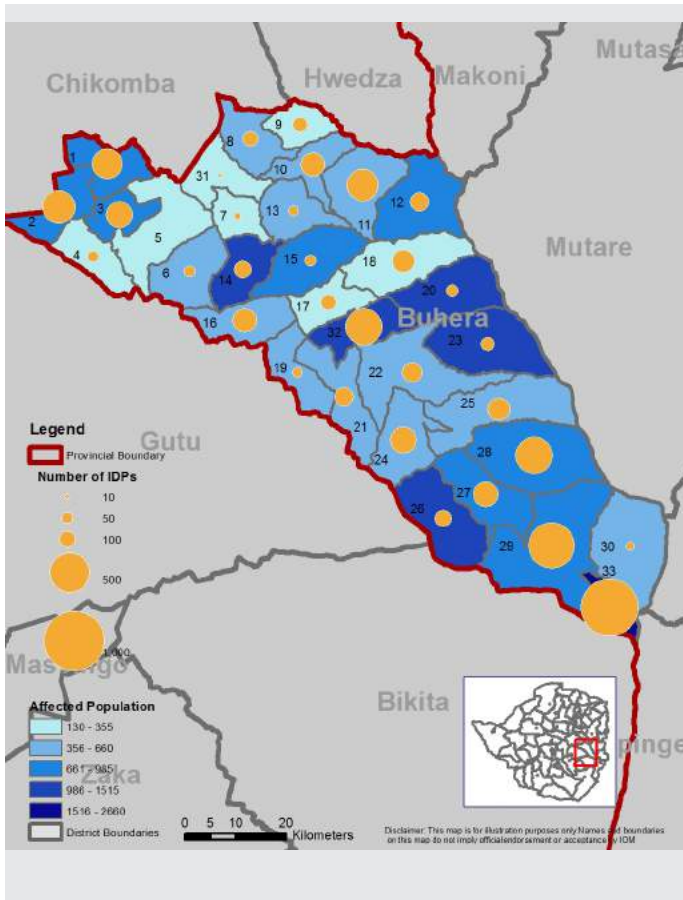
Location			Affected Population & Shelter Status					Internally Displaced Persons (IDPs)						
Province	District	Wards	Affected Population	Totally Destroyed Homes	Partially Destroyed Homes	HHs who still need shelter support	HHs who receive shelter support	Total IDPs in Wards	Male IDPs	Female IDPs	IDP HHs in Formal Camps	IDP Ind in Formal Camps	IDP HHs in HC	IDP Ind in HC
C1	C2	C3	C4	C5	C6	C7	C8	C9	C10	C11	C12	C13	C14	C15
Manicaland	Buhera	33	23,843	1,237	3,815	1,374	45	6,298	2,723	3,575	-	-	1,237	6,298
Manicaland	Chimanimani	20	31,456	1,960	5,744	1,615	1,550	4,939	2,267	2,672	224	830	754	4,109
Manicaland	Chipinge	21	67,792	3,420	7,800	10,075	215	20,493	8,633	11,860	-	-	3,643	20,493
Manicaland	Makoni	15	5,565	98	1,223	295	68	411	168	243	-	-	93	411
Manicaland	Mutare	29	12,984	724	1,566	1,430	55	3,599	1,445	2,154	-	-	732	3,599
Manicaland	Mutasa	30	2,237	170	276	315	13	858	354	504	-	-	176	858
Manicaland	Nyanga	31	976	85	131	85	1	342	164	178	-	-	85	342
Manicaland Total		179	144,853	7,694	20,555	15,189	1,947	36,940	15,754	21,186	224	830	6,720	36,110
Masvingo	Bikita	31	43,445	883	6,616	3,292	474	3,970	1,632	2,338	-	-	779	3,970
Masvingo	Chiredzi	18	7,229	63	887	399	7	296	117	179	-	-	60	296
Masvingo	Chiredzi Urban	7	1,399	-	149	15	6	-	-	-	-	-	-	-
Masvingo	Gutu	33	12,088	448	4,870	2,825	197	1,264	493	771	-	-	265	1,264
Masvingo	Masvingo	35	2,882	81	598	160	41	419	189	230	-	-	92	419
Masvingo	Zaka	33	22,107	928	3,808	2,226	375	463	193	270	-	-	81	463
Masvingo Total		157	89,150	2,403	16,928	8,917	1,100	6,412	2,624	3,788	-	-	1,277	6,412
Grand Total		336	234,003	10,097	37,483	24,106	3,047	43,352	18,378	24,974	224	830	7,997	42,522

Location			Returnees		Damaged Infrastructure							
Province	District	Wards	Returnee HHs	Returnee Ind	Damaged Schools	Damaged Clinics	Damaged Bridges	Damaged Roads	Damaged Public buildings	Damaged Boreholes	Damaged Water springs	Damaged Diptanks
C1	C2	C3	C16	C17	C18	C19	C20	C21	C22	C23	C24	C25
Manicaland	Buhera	33	397	2,011	52	8	55	60	8	61	-	1
Manicaland	Chimanimani	20	283	1,430	38	3	56	32	5	17	-	1
Manicaland	Chipinge	21	3,274	18,878	85	19	60	72	6	94	-	2
Manicaland	Makoni	15	69	347	21	5	14	25	7	11	1	1
Manicaland	Mutare	29	193	942	32	3	29	31	16	15	-	-
Manicaland	Mutasa	30	3	14	17	6	37	-	8	5	1	1
Manicaland	Nyanga	31	4	4	14	1	6	-	5	5	-	6
Manicaland Total		179	4,223	23,626	259	45	257	220	55	208	2	12
Masvingo	Bikita	31	204	1,001	48	3	50	-	5	33	16	9
Masvingo	Chiredzi	18	46	246	21	3	28	-	2	6	4	2
Masvingo	Chiredzi Urban	7	-	-	3	-	5	-	3	2	-	-
Masvingo	Gutu	33	191	825	47	1	17	-	3	7	2	7
Masvingo	Masvingo	35	35	164	44	16	46	-	3	14	-	20
Masvingo	Zaka	33	42	237	38	2	24	-	58	29	20	12
Masvingo Total		157	518	2,473	201	25	170	-	74	91	42	50
Grand Total		336	4,741	26,099	460	70	427	220	129	299	44	62

FOR MORE INFORMATION PLEASE CONTACT:
 Email: dtmzimbabwe@iom.int / dtmsupport@iom.int
<https://displacement.iom.int/zimbabwe>
<https://globaldtm.info/zimbabwe>

BUHERA MANICALAND

33 WARDS



23,843 in affected population

1,237 totally destroyed homes
3,815 partially destroyed homes

1,374 households need shelter support
45 households receive shelter support

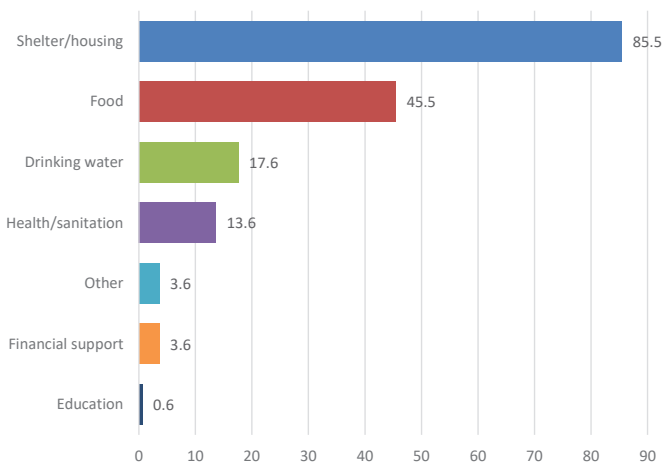
IDPs in 32 wards
1,237 households, 6,298 individuals
2,723 males and 3,575 females
IDPs from different wards — 7, 33

Returnees in 19 wards
397 returnee households
2,011 individuals

No collective-centres or camp-like sites
No formal IDP camps

IDPs live in host communities in 12 wards
45 households, 1,237 individuals live in host communities, in 44 locations

Priority needs in Buhera



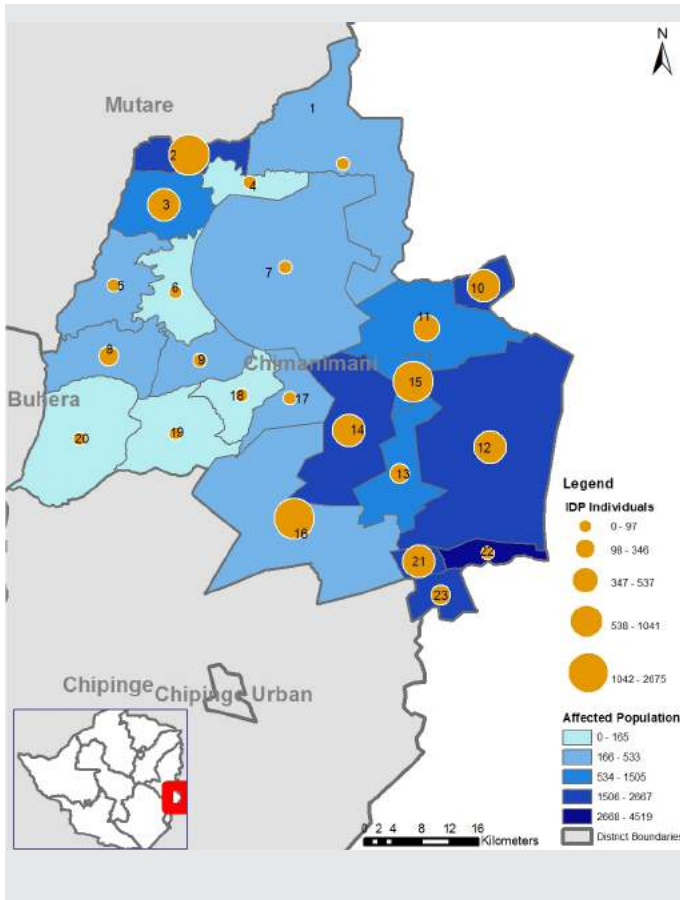
The top three needs for each ward have been aggregated by relative weight to provide a district-wide analysis. Shelter/housing is needed by 85 per cent of wards, and food by 45 per cent. The most significant needs and should be prioritised.

	Wards with damaged facilities	Number of damaged facilities
	22 wards	52 schools
	8 wards	8 health facilities
	22 wards	55 bridges
	22 wards	60 roads
	7 wards	8 public building
	15 wards	61 boreholes n/a water spring 1 dip tanks

FOR MORE INFORMATION PLEASE CONTACT:
Email: dtmzimbabwe@iom.int / dtmsupport@iom.int
<https://displacement.iom.int/zimbabwe>
<https://globaldtm.info/zimbabwe>

CHIMANIMANI MANICALAND

20 WARDS



31,456 in affected population

1,960 totally destroyed homes
5,744 partially destroyed homes

1,615 households need shelter support
1,550 households receive shelter support

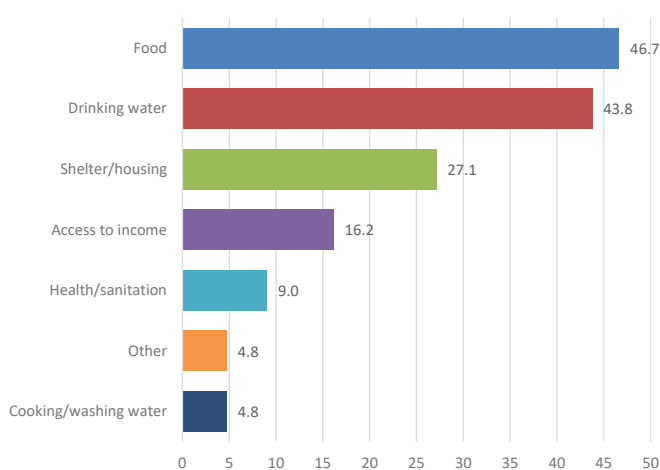
IDPs in 16 wards
978 households, 4,939 individuals
2,267 males and 2,672 females
IDPs from different wards — 4, 15, 20, 21

Returnees in 7 wards
283 returnee households
1,430 individuals

No collective-centres or camp-like sites
4 formal IDP camps in wards 15 & 21

IDPs live in host communities in 16 wards
754 households, 4,109 individuals live in host communities, in 85 locations.

Priority needs in Chimanimani

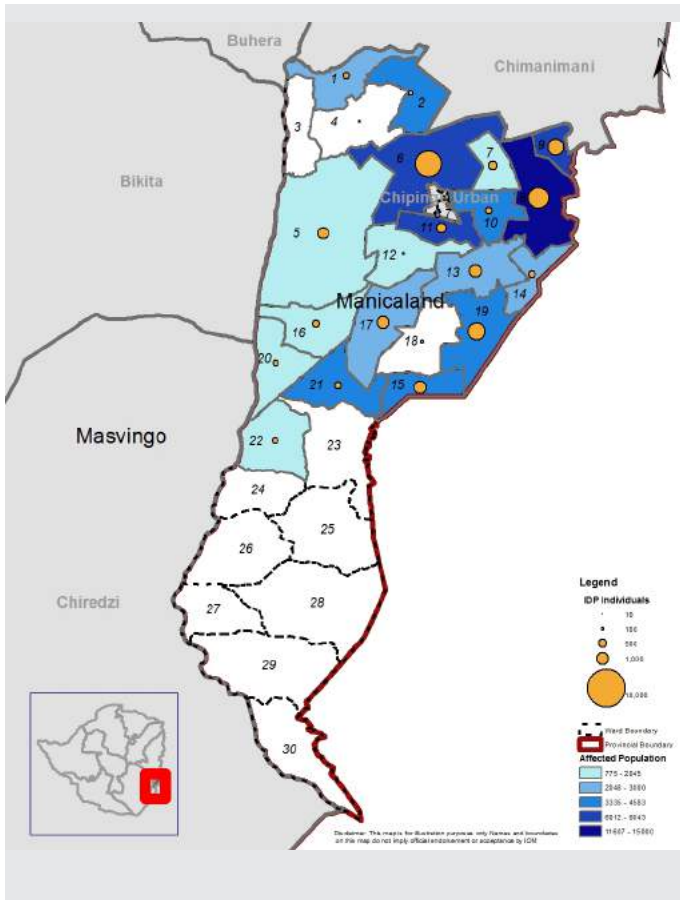


The top three needs for each ward have been aggregated by relative weight to provide a district-wide analysis. Food is needed in 47 per cent of wards, drinking water in 44 per cent, and shelter in 27 per cent.

	Wards with damaged facilities	Number of damaged facilities
	12 wards	38 schools
	14 wards	3 health facilities
	10 wards	56 bridges
	15 wards	32 roads
	8 wards	5 public building
	9 wards	17 boreholes n/a water spring 1 dip tanks

CHIPINGE MANICALAND

21 WARDS



67,792 in affected population

3,420 totally destroyed homes
7,800 partially destroyed homes

10,075 households need shelter support
215 households receive shelter support

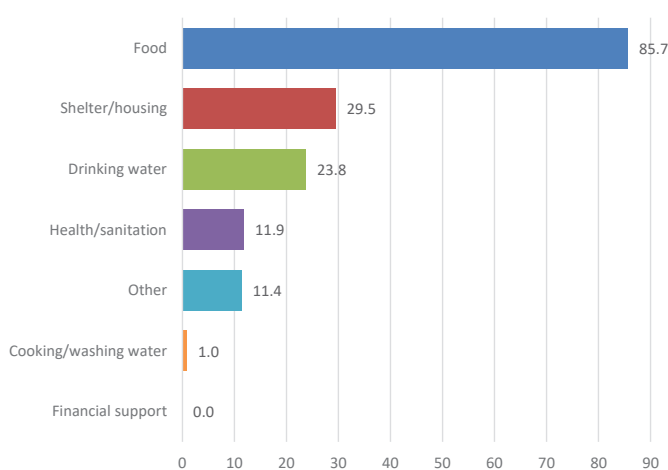
IDPs in 21 wards
3,643 households, 20,493 individuals
8,633 males and 11,860 females
IDPs from different wards — 1, 5, 8, 19, 22

Returnees in 19 wards
3,274 returnee households
18,878 individuals

No collective-centres or camp-like sites
No formal IDP camps

IDPs live in hosted communities in 12 wards
3,643 households, 20,493 individuals live in host communities, in 200 locations

Priority needs in Chipinge

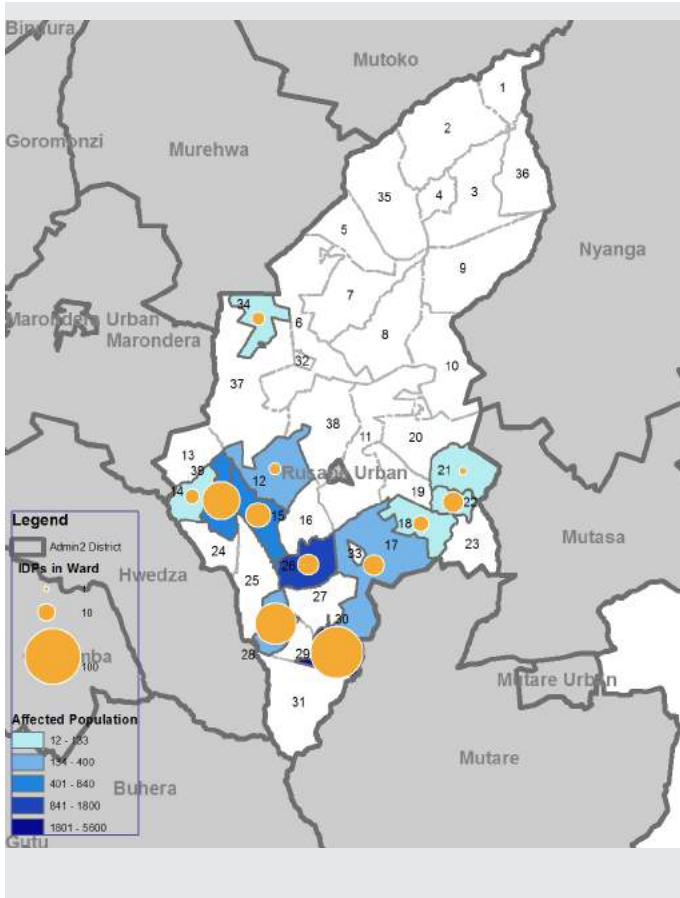


The top three needs for each ward have been aggregated by relative weight to provide a district-wide analysis. Food is the main need for 86 per cent of wards, with shelter (30%) and drinking water (24%) being the second and third needs.

	Wards with damaged facilities	Number of damaged facilities
	20 wards	85 schools
	10 wards	19 health facilities
	21 wards	60 bridges
	20 wards	72 roads
	4 wards	6 public building
	2 wards	94 boreholes 0 water spring 2 dip tanks

MAKONI MANICALAND

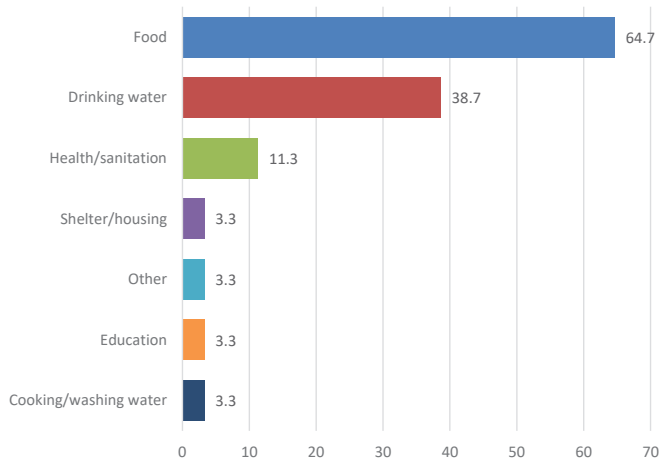
15 WARDS



- 5,565 in affected population
- 98 totally destroyed homes
1,223 partially destroyed homes
- 1,092 households need shelter support
68 households receive shelter support

- IDPs in 14 wards
93 households, 411 individuals
168 males and 243 females
IDPs from different ward — 12
- Returnees in 6 wards
69 returnee households
347 individuals
- No collective-centres or camp-like sites
No formal IDP camps
- IDPs live in host communities in 14 wards
93 households, 411 individuals live in host communities, in 30 locations

Priority needs in Makoni

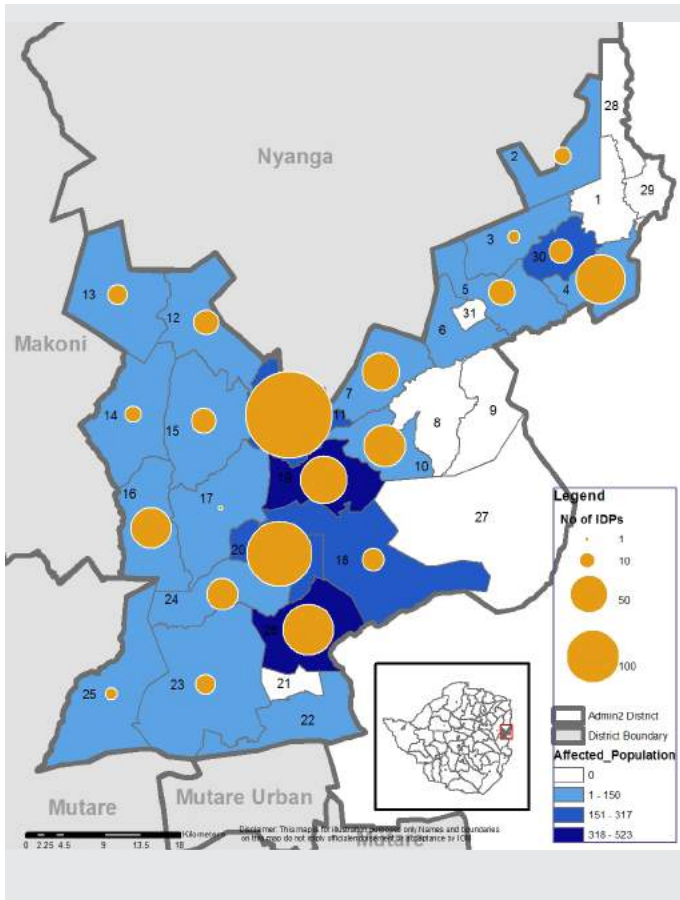


The top three needs for each ward have been aggregated by relative weight to provide a district-wide analysis. Food is the main need at 65 per cent, followed by drinking water at 39 per cent.

	Wards with damaged facilities	Number of damaged facilities
	9 wards	21 schools
	4 wards	5 health facilities
	11 wards	14 bridges
	8 wards	25 roads
	5 wards	7 public building
	4 wards	11 boreholes 1 water spring 1 dip tanks

MUTASA MANICALAND

33 WARDS



2,237 in affected population

170 totally destroyed homes
276 partially destroyed homes

315 households need shelter support
13 households receive shelter support

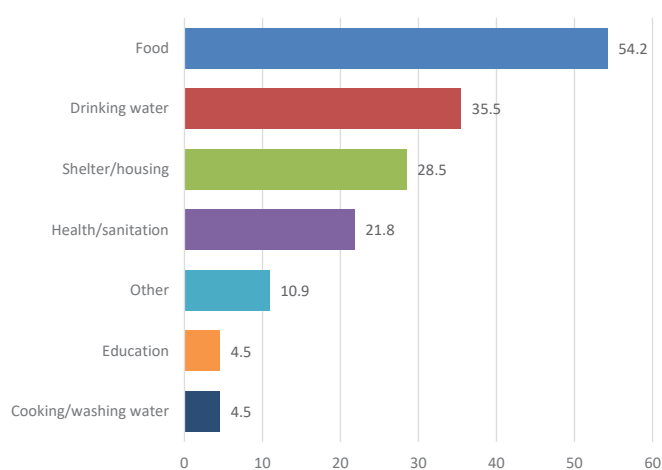
IDPs in 26 wards
176 households, 858 individuals
354 males and 504 females
IDPs from different wards — 11, 12

Returnees in 8 wards
3 returnee households
14 individuals

No collective-centres or camp-like sites
No formal IDP camps

IDPs live in host communities in 8 wards
176 households, 858 individuals live in host communities, in 81 locations

Priority needs in Mutasa

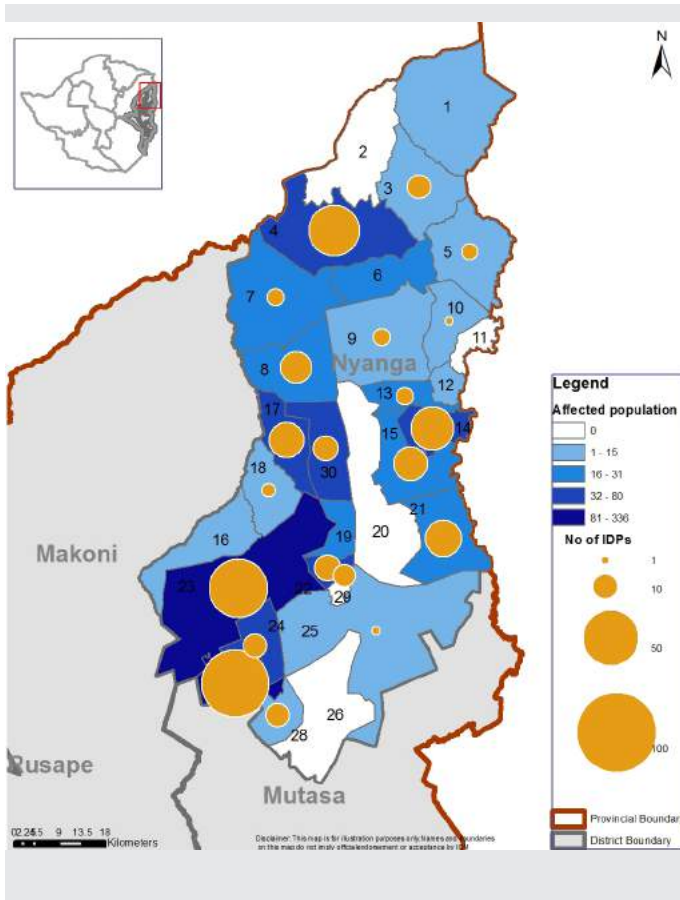


The top three needs for each ward have been aggregated by relative weight to provide a district-wide analysis. Food is the largest need at 54 per cent, followed by drinking water at 36 per cent and shelter/housing at 29 per cent.

	Wards with damaged facilities	Number of damaged facilities
	4 wards	17 schools
	4 wards	6 health facilities
	12 wards	37 bridges
	0 wards	n/a roads
	6 wards	8 public building
	2 wards	5 boreholes 1 water spring 1 dip tanks

NYANGA MANICALAND

31 WARDS



976 in affected population

85 totally destroyed homes
131 partially destroyed homes

85 households need shelter support
1 households receive shelter support

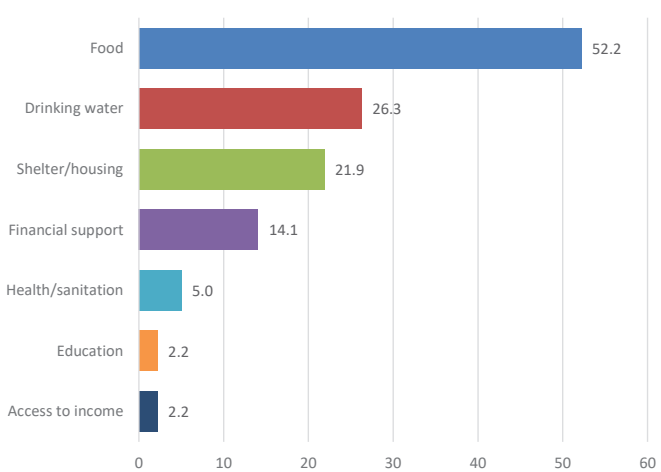
IDPs in 21 wards
85 households, 342 individuals
164 males and 178 females
No IDPs from different wards

Returnees in 1 ward
4 returnee households
4 individuals

No collective-centres or camp-like sites
No formal IDP camps

IDPs live in host communities in 21 wards
85 households, 342 individuals live in host communities, in 46 locations

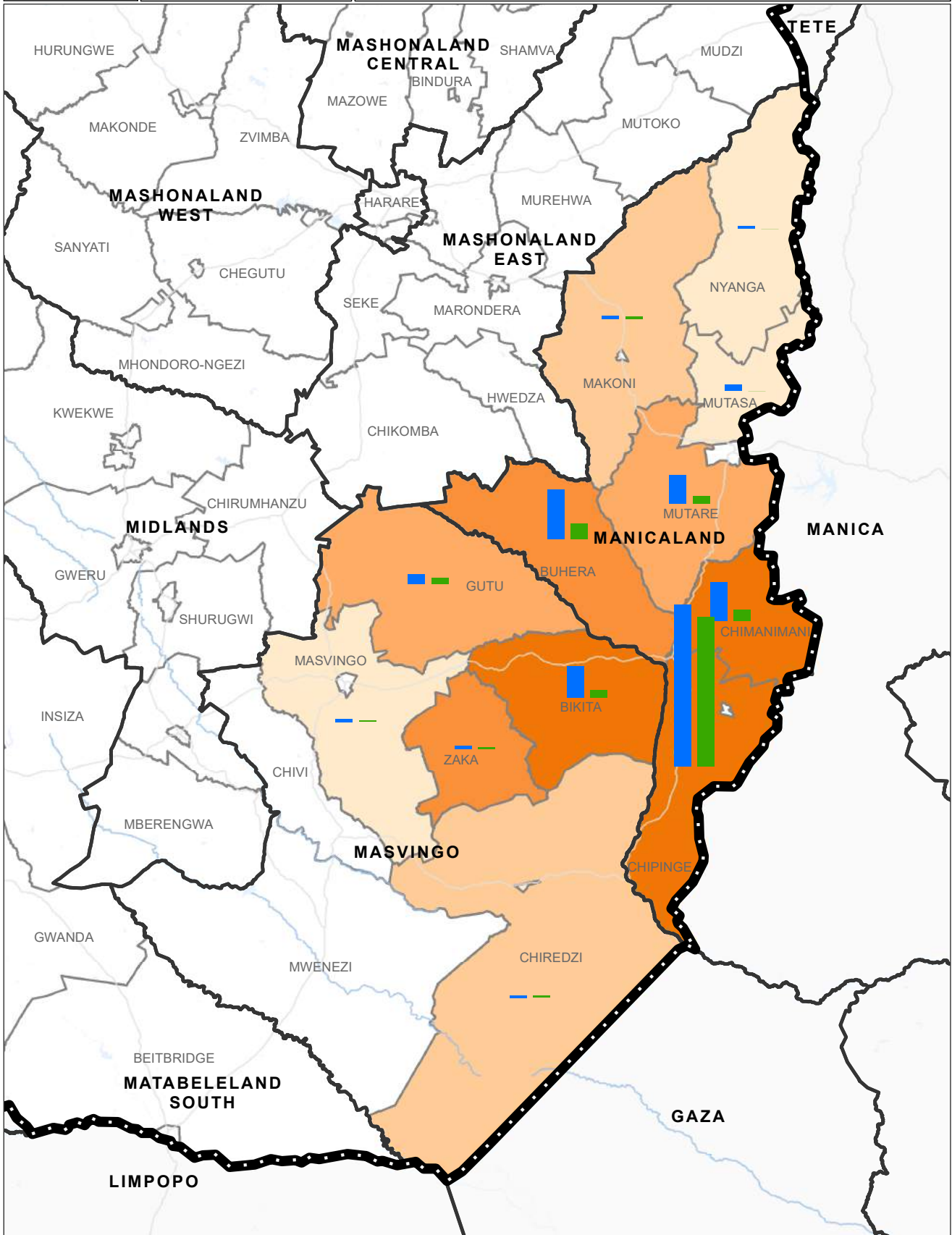
Priority needs in Nyanga



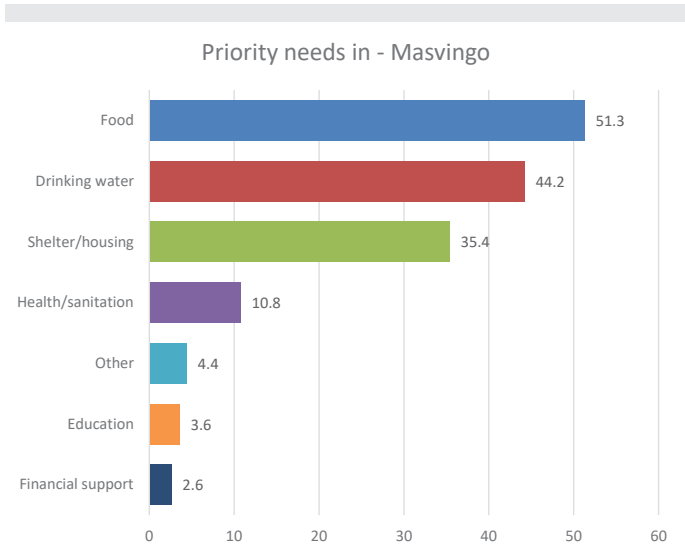
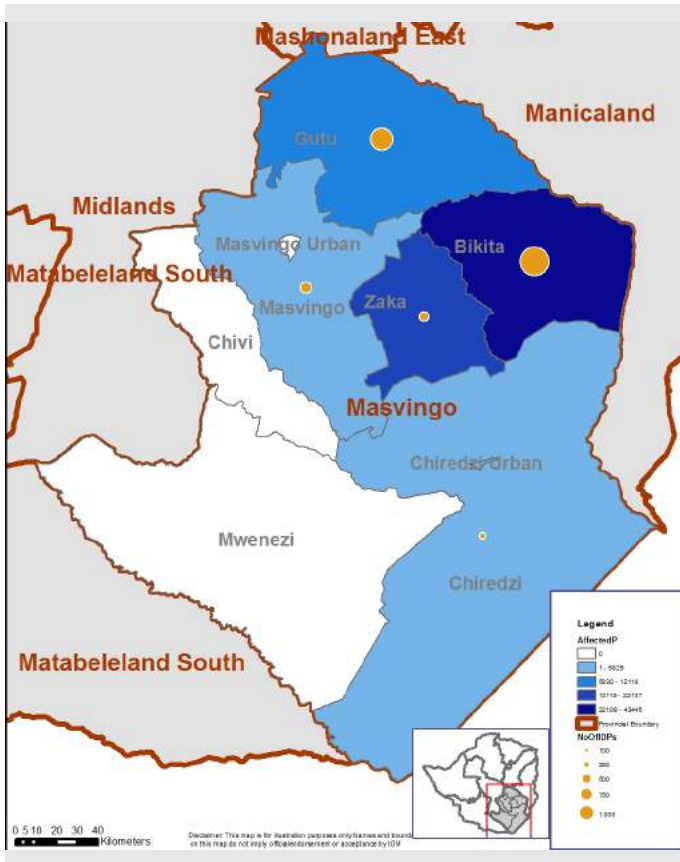
The top three needs for each ward have been aggregated by relative weight to provide a district-wide analysis. Food is the main need at 52%, with drinking water at 26 per cent and shelter/housing at 22 per cent.

	Wards with damaged facilities	Number of damaged facilities
	6 wards	14 schools
	1 wards	1 health facilities
	4 wards	6 bridges
	6 wards	n/a roads
	2 wards	5 public building
	8 wards	5 boreholes 0 water spring 6 dip tanks

	Primary Route Waterway Waterbody Country Province District	Affected Pop 976 - 5.000 5.001 - 10.000 10.001 - 20.000 20.001 - 30.000 30.001 - 67.792	<h2>ZIMBABWE - Affected population</h2> <h3>DTM Round 3 - IDPs and Returnees presence</h3> <p>1:1,750,000 1 cm = 18 km</p> <p>0 25 50 100 Kilometers</p> <p>Map Production Date : 06 February 2020 www.iom.int dtmsupport@iom.int</p>
	IDPs Returnees	<p>Source Data : ESRI, IOM, OCHA, UNJLC</p> <p>Disclaimer : This map is for illustration purposes only. Names and boundaries on this map do not imply official endorsement or acceptance by IOM.</p>	



MASVINGO PROVINCE



The top three needs for each ward have been aggregated by relative weight to provide a provincial analysis. As in Manicaland, the top priority is food, closely followed by drinking water. This reflects the greater damage to water supplies in this province. Shelter/housing is the third highest need, followed by health/sanitation. The remaining options have been seldom mentioned by those participating in the baseline assessment.

Number of damaged facilities

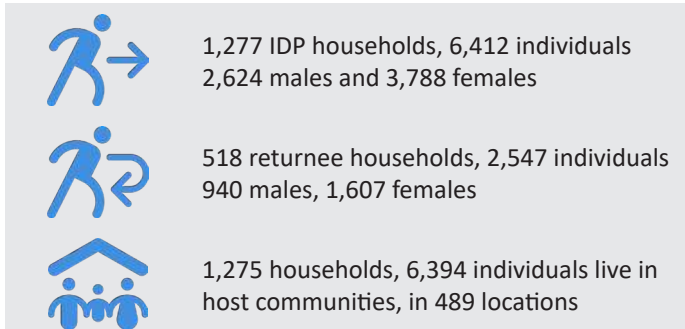
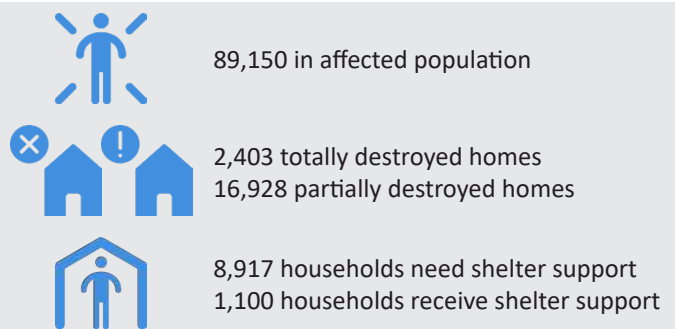
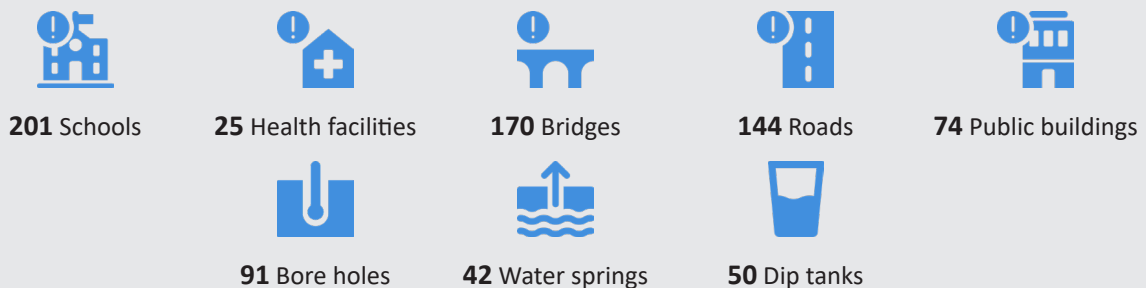


TABLE — MASVINGO

SUMMARY STATISTICS BY DISTRICT, DTM BASELINE WARD ASSESSMENTS (DECEMBER 2019)

Location			Affected Population & Shelter Status					Internally Displaced Persons (IDPs)						
Province	District	Wards	Affected Population	Totally Destroyed Homes	Partially Destroyed Homes	HHs who still need shelter support	HHs who receive shelter support	Total IDPs in Wards	Male IDPs	Female IDPs	IDP HHs in Formal Camps	IDP Ind in Formal Camps	IDP HHs in HC	IDP Ind in HC
C1	C2	C3	C4	C5	C6	C7	C8	C9	C10	C11	C12	C13	C14	C15
Manicaland	Buhera	33	23,843	1,237	3,815	1,374	45	6,298	2,723	3,575	-	-	1,237	6,298
Manicaland	Chimanimani	20	31,456	1,960	5,744	1,615	1,550	4,939	2,267	2,672	224	830	754	4,109
Manicaland	Chipinge	21	67,792	3,420	7,800	10,075	215	20,493	8,633	11,860	-	-	3,643	20,493
Manicaland	Makoni	15	5,565	98	1,223	295	68	411	168	243	-	-	93	411
Manicaland	Mutare	29	12,984	724	1,566	1,430	55	3,599	1,445	2,154	-	-	732	3,599
Manicaland	Mutasa	30	2,237	170	276	315	13	858	354	504	-	-	176	858
Manicaland	Nyanga	31	976	85	131	85	1	342	164	178	-	-	85	342
Manicaland Total		179	144,853	7,694	20,555	15,189	1,947	36,940	15,754	21,186	224	830	6,720	36,110
Masvingo	Bikita	31	43,445	883	6,616	3,292	474	3,970	1,632	2,338	-	-	779	3,970
Masvingo	Chiredzi	18	7,229	63	887	399	7	296	117	179	-	-	60	296
Masvingo	Chiredzi Urban	7	1,399	-	149	15	6	-	-	-	-	-	-	-
Masvingo	Gutu	33	12,088	448	4,870	2,825	197	1,264	493	771	-	-	265	1,264
Masvingo	Masvingo	35	2,882	81	598	160	41	419	189	230	-	-	92	419
Masvingo	Zaka	33	22,107	928	3,808	2,226	375	463	193	270	-	-	81	463
Masvingo Total		157	89,150	2,403	16,928	8,917	1,100	6,412	2,624	3,788	-	-	1,277	6,412
Grand Total		336	234,003	10,097	37,483	24,106	3,047	43,352	18,378	24,974	224	830	7,997	42,522

Location			Returnees		Damaged Infrastructure							
Province	District	Wards	Returnee HHs	Returnee Ind	Damaged Schools	Damaged Clinics	Damaged Bridges	Damaged Roads	Damaged Public buildings	Damaged Boreholes	Damaged Water springs	Damaged Diptanks
C1	C2	C3	C16	C17	C18	C19	C20	C21	C22	C23	C24	C25
Manicaland	Buhera	33	397	2,011	52	8	55	60	8	61	-	1
Manicaland	Chimanimani	20	283	1,430	38	3	56	32	5	17	-	1
Manicaland	Chipinge	21	3,274	18,878	85	19	60	72	6	94	-	2
Manicaland	Makoni	15	69	347	21	5	14	25	7	11	1	1
Manicaland	Mutare	29	193	942	32	3	29	31	16	15	-	-
Manicaland	Mutasa	30	3	14	17	6	37	-	8	5	1	1
Manicaland	Nyanga	31	4	4	14	1	6	-	5	5	-	6
Manicaland Total		179	4,223	23,626	259	45	257	220	55	208	2	12
Masvingo	Bikita	31	204	1,001	48	3	50	-	5	33	16	9
Masvingo	Chiredzi	18	46	246	21	3	28	-	2	6	4	2
Masvingo	Chiredzi Urban	7	-	-	3	-	5	-	3	2	-	-
Masvingo	Gutu	33	191	825	47	1	17	-	3	7	2	7
Masvingo	Masvingo	35	35	164	44	16	46	-	3	14	-	20
Masvingo	Zaka	33	42	237	38	2	24	-	58	29	20	12
Masvingo Total		157	518	2,473	201	25	170	-	74	91	42	50
Grand Total		336	4,741	26,099	460	70	427	220	129	299	44	62

FOR MORE INFORMATION PLEASE CONTACT:

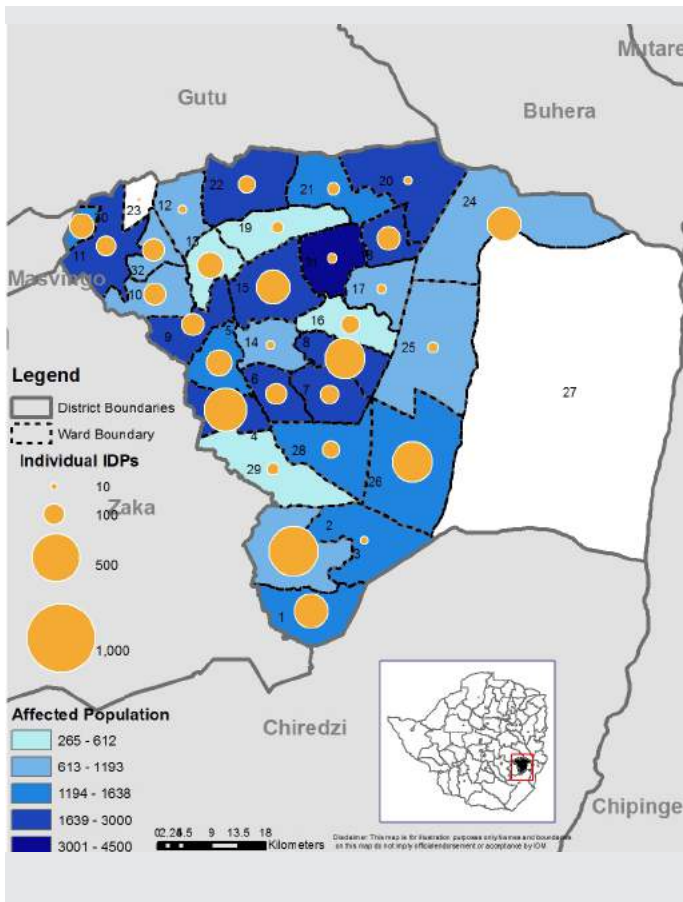
Email: dtmzimbabwe@iom.int / dtmsupport@iom.int

<https://displacement.iom.int/zimbabwe>

<https://globaldtm.info/zimbabwe>

BIKITA MASVINGO

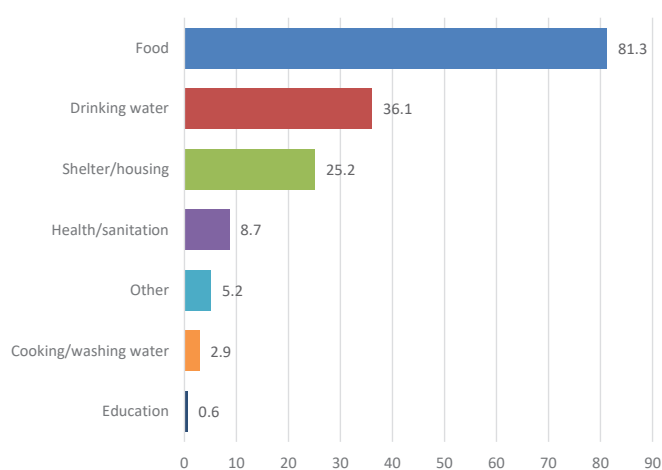
31 WARDS



- 43,445 in affected population
- 883 totally destroyed homes
6,616 partially destroyed homes
- 3,292 households need shelter support
474 households receive shelter support

- IDPs in 31 wards
779 households, 3,970 individuals
1,632 males and 2,338 females
IDPs from different ward — 19
- Returnees in 21 wards
204 returnee households
1,001 individuals
- No collective-centres or camp-like sites
No formal IDP camps
- IDPs live in host communities in 31 wards
779 households, 3,970 individuals live in
host communities, in 229 locations

Priority needs in Bikita

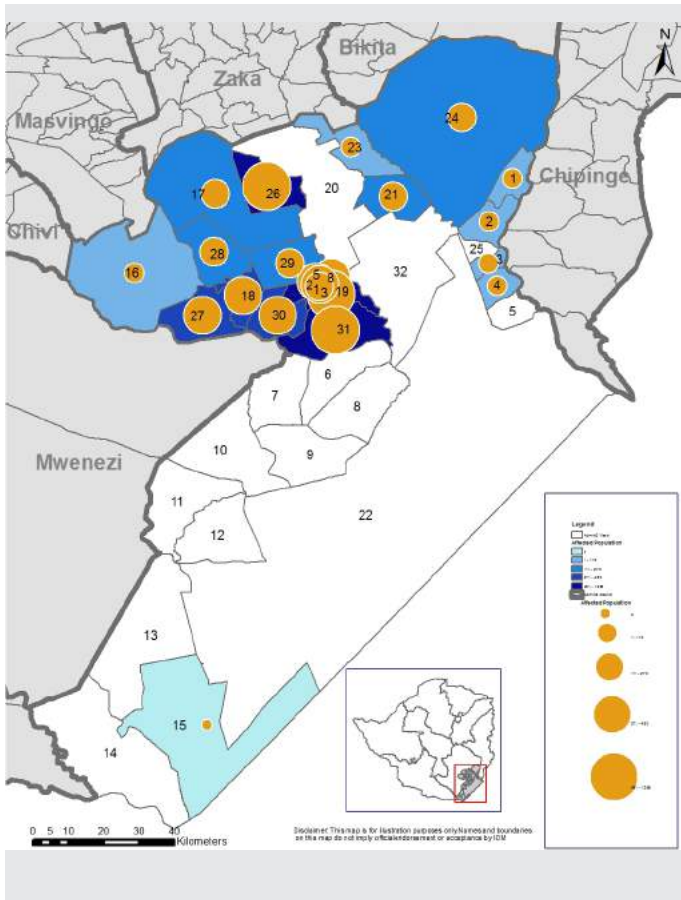


The top three needs for each ward have been aggregated by relative weight to provide a district-wide analysis. Food is the main need at 81 per cent, with drinking water at 36 per cent and shelter/housing at 25 per cent.

	Wards with damaged facilities	Number of damaged facilities
	24 wards	48 schools
	6 wards	3 health facilities
	21 wards	50 bridges
	0 wards	n/a roads
	1 wards	5 public building
	11 wards	33 boreholes 16 water spring 9 dip tanks

CHIREZDI MASVINGO

18 WARDS



7,229 in affected population

63 totally destroyed homes
887 partially destroyed homes

399 households need shelter support
7 households receive shelter support

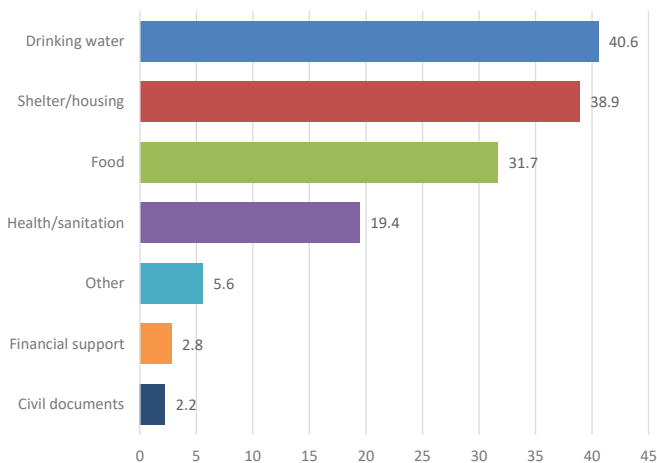
IDPs in 11 wards
60 households, 296 individuals
117 males and 179 females
IDPs from different ward — 1

Returnees in 10 wards
46 returnee households
246 individuals

No collective-centres or camp-like sites
No formal IDP camps

IDPs live in host communities in 11 wards
60 households, 296 individuals live in host communities, in 32 locations

Priority needs in Chiredzi

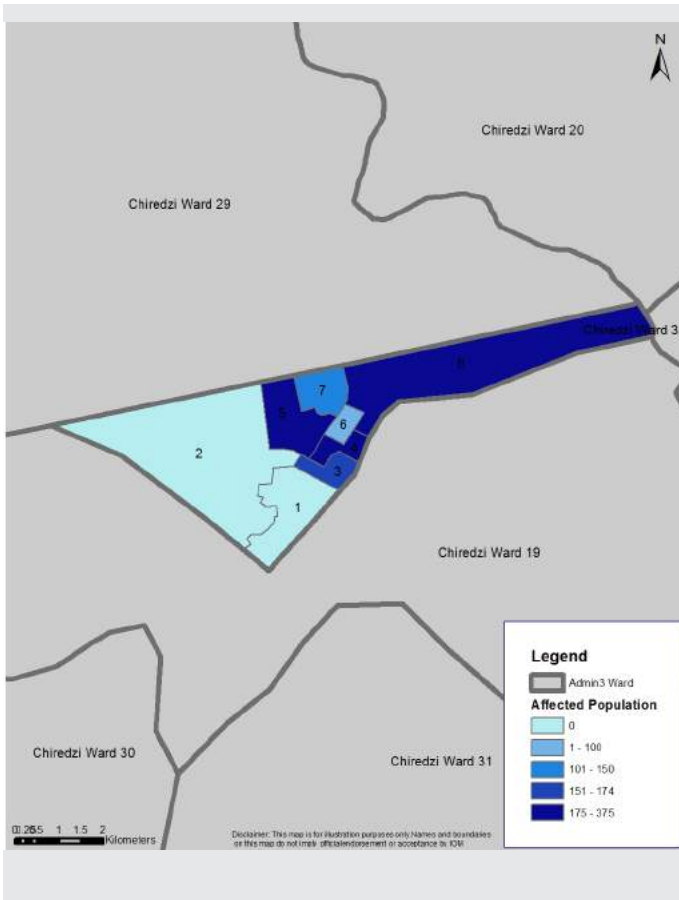


The top three needs for each ward have been aggregated by relative weight to provide a district-wide analysis. The main needs have similar weightings, with drinking water at 41 per cent, shelter/housing at 39 per cent and food at 32 per cent.

	Wards with damaged facilities	Number of damaged facilities
	12 wards	21 schools
	3 wards	3 health facilities
	7 wards	28 bridges
	12 wards	n/a roads
	2 wards	2 public building
	7 wards	6 boreholes 4 water spring 2 dip tanks

CHIREDZI URBAN MASVINGO

7 WARDS



1,399 in affected population

No totally destroyed homes
149 partially destroyed homes

15 households need shelter support
6 households receive shelter support

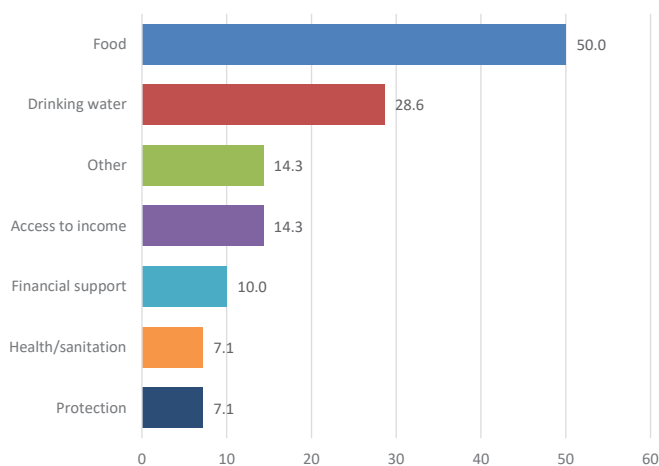
No IDPs in wards
No IDPs from different wards

No returnees

No collective-centres or camp-like sites
No formal IDP camps

No IDPs living in host communities

Priority needs in Chiredzi Urban

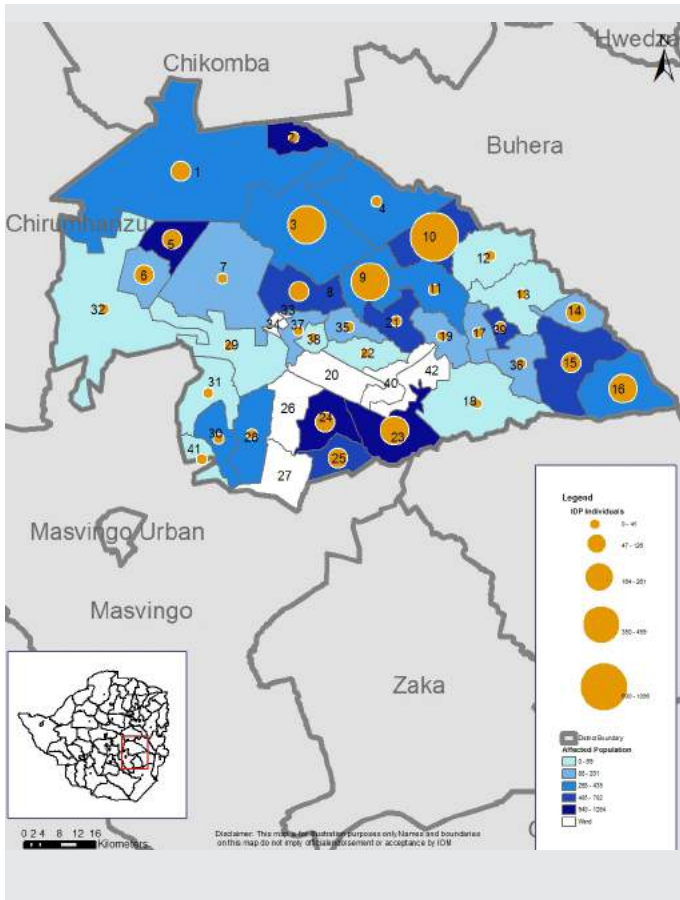


The top three needs for each ward have been aggregated by relative weight to provide a district-wide analysis. The main need is food at 50 per cent, followed by drinking water at 29 per cent. Access to income and 'other' are both at 14 per cent.

	Wards with damaged facilities	Number of damaged facilities
	3 wards	3 schools
	0 wards	0 health facilities
	2 wards	3 bridges
	2 wards	n/a roads
	2 wards	3 public building
	1 wards	2 boreholes n/a water spring n/a dip tanks

GUTU MASVINGO

33 WARDS



12,088 in affected population

448 totally destroyed homes
4,870 partially destroyed homes

2,825 households need shelter support
197 households receive shelter support

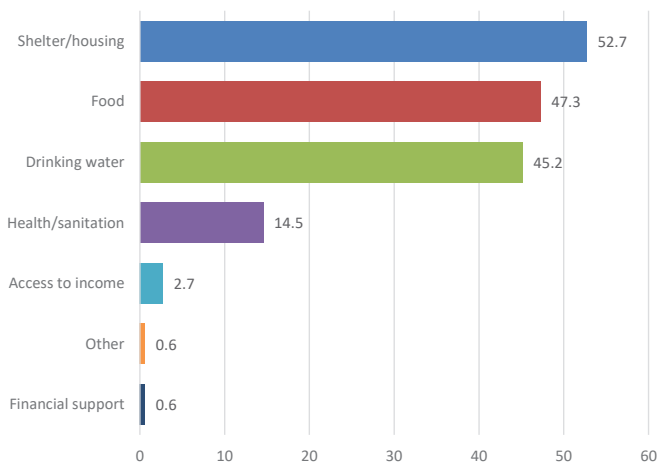
IDPs in 33 wards
265 households, 1,264 individuals
493 males and 771 females
IDPs from different ward — 15

Returnees in 25 wards
191 returnee households
825 individuals

0 collective-centres or camp-like sites
No formal IDP camps

IDPs live in host communities in 31 wards
265 households, 1,264 individuals live in host communities, in 119 locations

Priority needs in Gutu

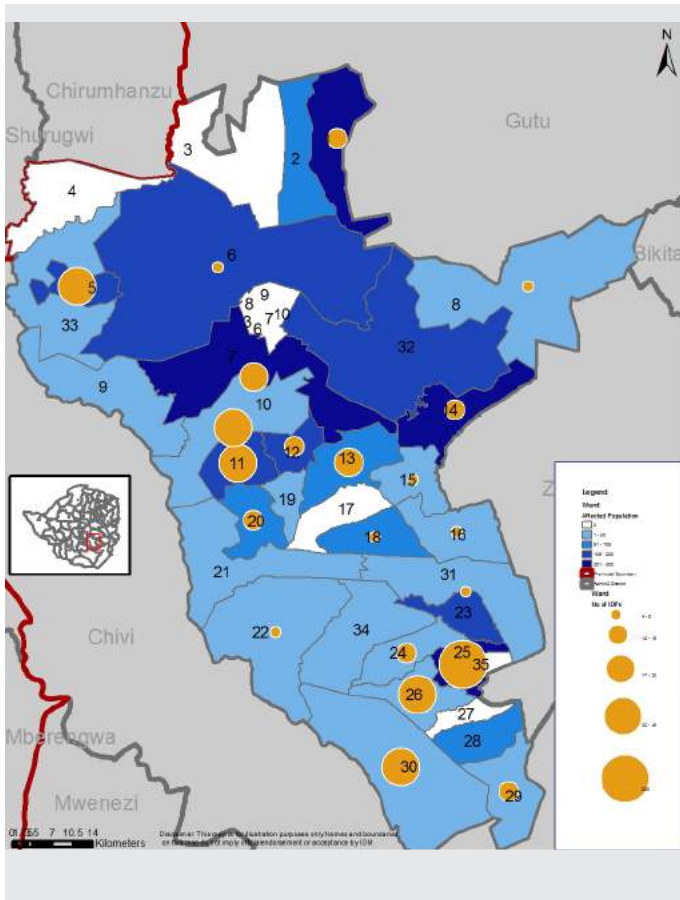


The top three needs for each ward have been aggregated by relative weight to provide a district-wide analysis. The main needs are similarly weighted, with food at 53 per cent, food at 47 per cent, and drinking water at 45 per cent.

	Wards with damaged facilities	Number of damaged facilities
	21 wards	47 schools
	1 wards	1 health facilities
	10 wards	17 bridges
	14 wards	n/a roads
	2 wards	3 public building
	11 wards	7 boreholes 2 water spring 7 dip tanks

MASVINGO MASVINGO

35 WARDS



2,882 in affected population

81 totally destroyed homes
598 partially destroyed homes

160 households need shelter support
41 households receive shelter support

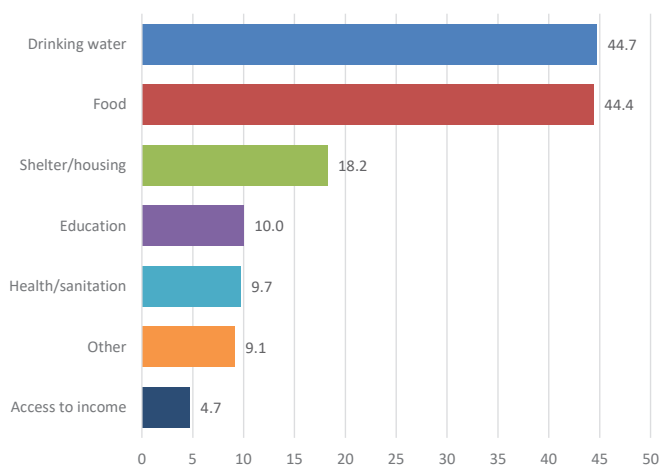
IDPs in 23 wards
92 households, 419 individuals
189 males and 230 females
No IDPs from different wards

Returnees in 12 wards
35 returnee households
164 individuals

No collective-centres or camp-like sites
No formal IDP camps

IDPs live in host communities in 23 wards
92 households, 419 individuals live in host communities, in 57 locations

Priority needs in Masvingo

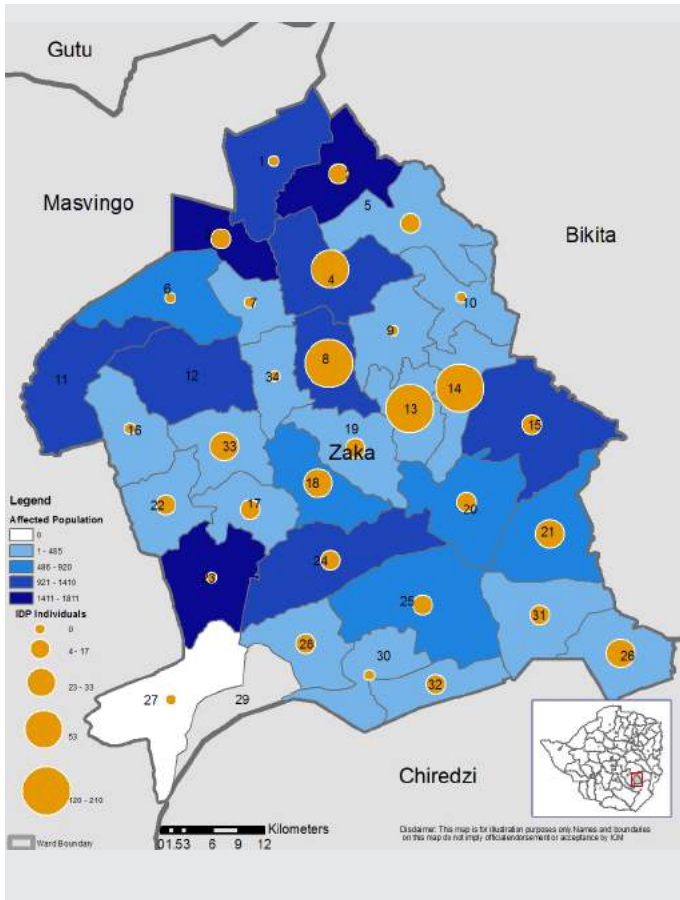


The top three needs for each ward have been aggregated by relative weight to provide a district-wide analysis. The two main needs are drinking water at 45 per cent, and food at 44 per cent. The third largest need is shelter/housing (18%).

	Wards with damaged facilities	Number of damaged facilities
	18 wards	44 schools
	11 wards	16 health facilities
	16 wards	46 bridges
	18 wards	n/a roads
	3 wards	3 public building
	14 wards	14 boreholes n/a water spring 20 dip tanks

ZAKA MASVINGO

33 WARDS



22,107 in affected population

928 totally destroyed homes
3,808 partially destroyed homes

2,226 households need shelter support
375 households receive shelter support

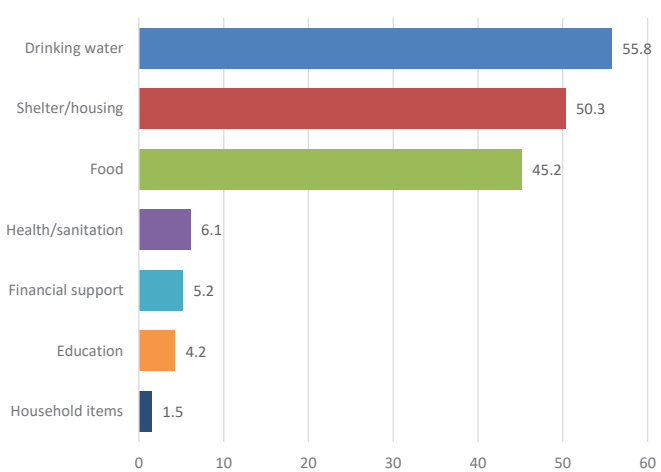
IDPs in 19 wards
81 households, 463 individuals
193 males and 270 females
IDPs from different ward — 5, 18, 19 31

Returnees in 12 wards
42 returnee households
237 individuals

No collective-centres or camp-like sites
No formal IDP camps

463 IDPs live in Host Communities in 19 wards, 81 households, in 48 locations.

Priority needs in Zaka



The top three needs for each ward have been aggregated by relative weight to provide a district-wide analysis. The main needs are similarly weighted, with drinking water at 56 per cent, shelter/housing at 50 per cent, and food at 45 per cent.

	Wards with damaged facilities	Number of damaged facilities
	21 wards	38 schools
	1 wards	2 health facilities
	17 wards	24 bridges
	21 wards	n/a roads
	6 wards	8 public building
	24 wards	29 boreholes 20 water spring 12 dip tanks