

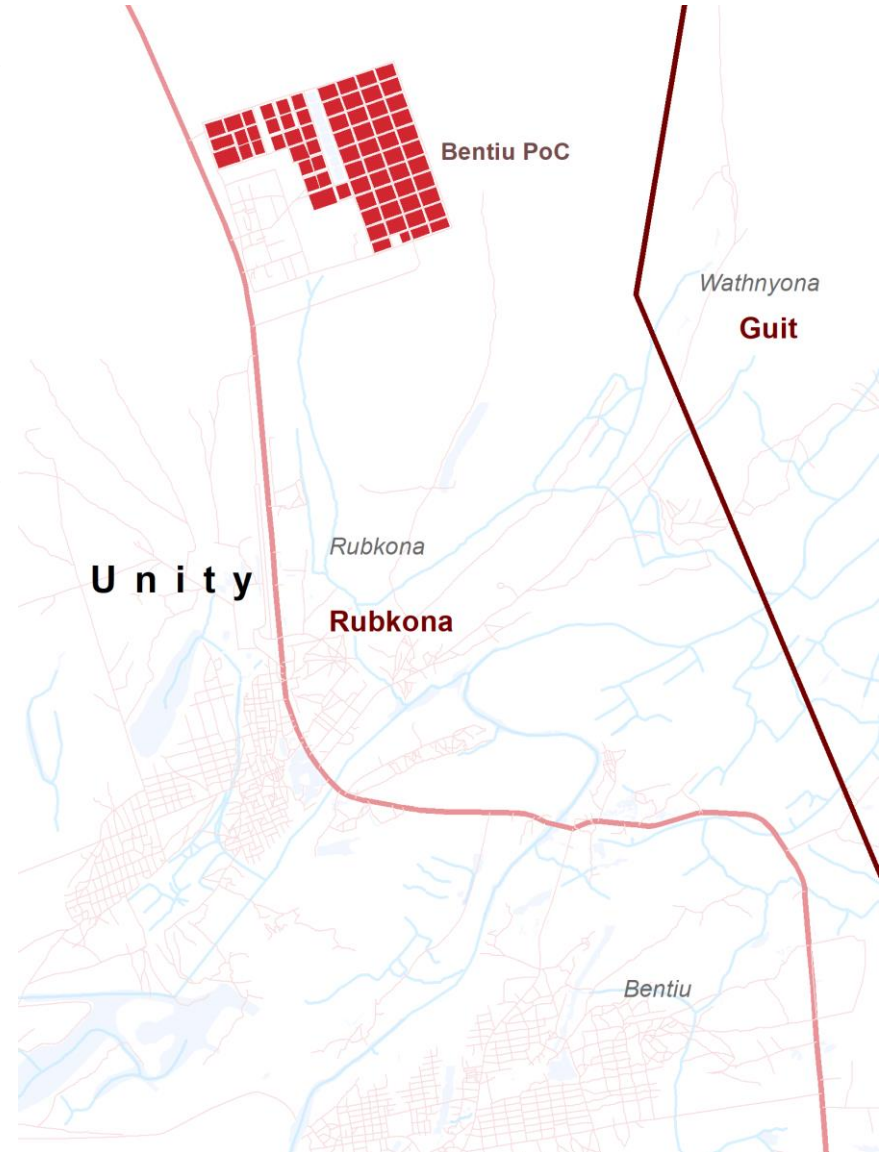
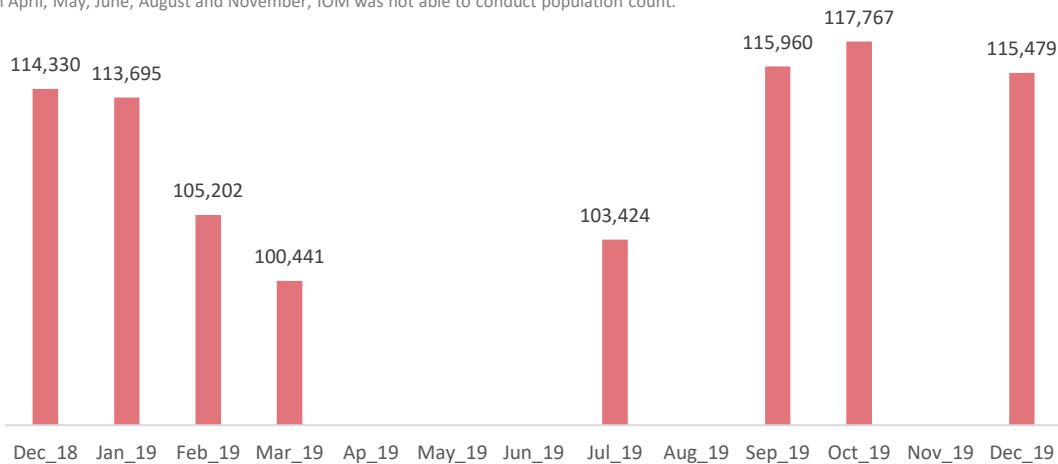


The Bentiu Protection of Civilian (PoC) site was established in December 2013. As of December 2019, 136,450 beneficiaries are registered as active beneficiaries in the site representing a decrease by 5,588 individuals (4%) since October 2019 due to a combination of a growing number of people getting registered at other nearby locations such as Koch and Leer as well as due to deactivations of registrations as a consequence of repeatedly not attending food distributions. Recognizing that there have been significant population changes since the last overall biometric registration / verification, IOM DTM conducts regular population counts to monitor population dynamics and displacement trends.

As per the **December 2019 population count, the population stands at 115,479 individuals (16,750 households) in 11,884 inhabited shelters (on average 10 individuals per shelter)**. The PoC site had been decreasing in population throughout the first half of the year and reached its highest point of the year in October 2019 at 117,767 individuals. [Displacement site flow monitoring \(DSFM\)](#) suggests that an increase between March and October 2019 could in large part be due to new arrivals from Sudan. For more information, please also consult the [Arrivals from Khartoum report](#). Based **December 2019 DSFM data** (4,675 individual movements tracked) most individuals intending to permanently leave the site left for former homes in Mayiendit and Mayom. Return related activities amongst temporary journeys away from the site (checking on property and attempted returns) represented 33% (596 ind. movements) of overnight trips in December – a proportion that has gradually more than doubled since August 2019.

Monthly trend in Bentiu PoC, December 2018 – December 2019*

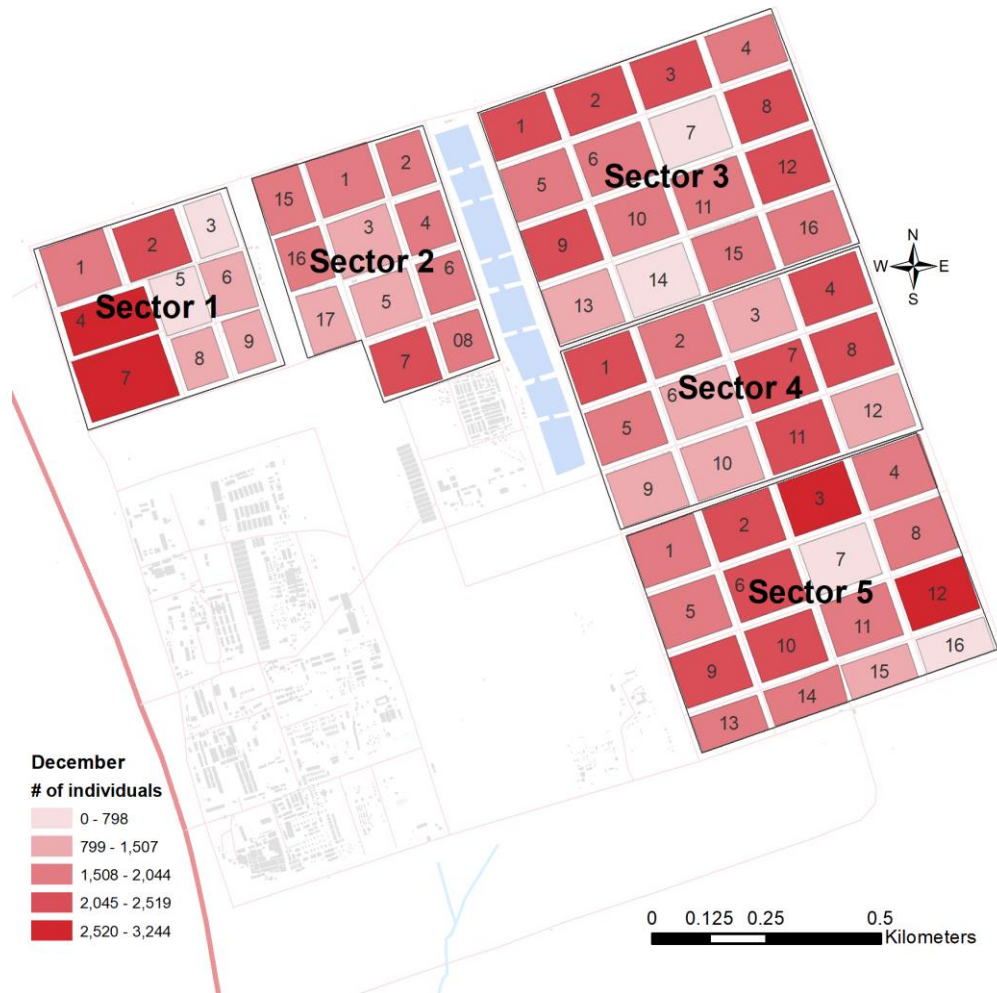
*In April, May, June, August and November, IOM was not able to conduct population count.





Population in Bentiu PoC site (December 2019)

Sector 5 30,737	Sector 3 28,773	Sector 4 21,355	Sector 2 19,484	Sector 1 15,130
-----------------	-----------------	-----------------	-----------------	-----------------

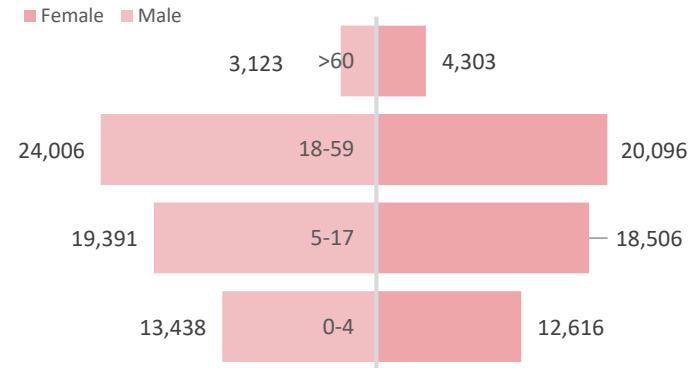


The most populous sector is Sector 5 with 27 per cent of the overall population, followed for sector 3 (25%) and Sector 4 (18%).

The blocks with the largest populations were found in block 7 of sector 1 (3,244 individuals) as well as block 4, sector 1 (2,917) and block 12, sector 5 (2,867).

Bentiu PoC, Population by age and sex, December 2019

115,479 individuals, 48% Female



For further information, contact southsudandtm@iom.int & visit <https://displacement.iom.int/south-sudan>.

DTM IS SUPPORTED BY

