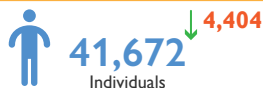


Current IDP locations and locations of origin in El Geneina

The DTM Emergency Event Tracking (EET) is deployed to track sudden displacement and population movements, and provide more frequent updates on the scale of displacement and quantify the affected population when needed. As a subcomponent of the new Mobility Tracking methodology in Sudan ([Round Zero](#)), and activated on a need basis, EET utilises a broad network of key informants to capture best estimates of the affected population presence per location – a useful tool for humanitarian response planning and design.

Event Overview

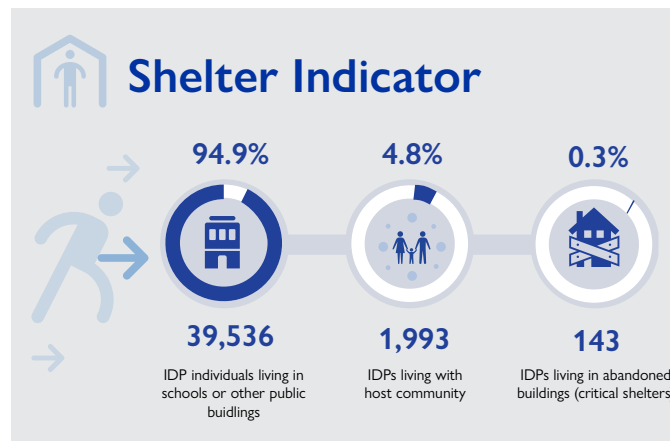


DTM teams activated EET to monitor the displacement of individuals affected by the inter-communal violence in West Darfur – for more information see [EET El Geneina 1](#), [EET El Geneina 2](#) and [EET El Geneina 3](#).

The fourth EET update estimates a total number of 41,672 individuals (8,381 households) situated across 37 sites of displacement in El Geneina, having arrived from 11 locations of origin. These updated figures indicate a decrease of 4,404 internally displaced persons (IDPs) (1,226 households) from the area – reports from the field suggesting that some households have now returned to their locations of origin. Displacement figures collected through this activity are further refined with each data collection round to reduce any discrepancies that may result from the miscorrelation of the EET methodology and that of DTM registration activities linked to direct humanitarian assistance.

Location of Origin	# IDPs Individuals	# IDPs Housholds
Krinding 2	27,183	5,687
Krinding 1	7,224	1,379
Sultan House	5,466	896
Baradia Village	1,083	276
Gokar Village	586	119
Hashaba Village	103	18
Allah Maraga	8	1
Gogata	7	2
Doait Borri	5	1
Atia	4	1
Jalati	3	1
Grand Total	41,672	8,381

Total number of IDP individuals per location of origin within El Geneina locality, West Darfur.



IOM DISCLAIMER

The opinions expressed in the report are those of the authors and do not necessarily reflect the views of the International Organization for Migration (IOM). The designations employed and the presentation of material throughout the report do not imply the expression of any opinion whatsoever on the part of IOM concerning the legal status of any country, territory, city or area, or of its authorities, or concerning its frontiers or boundaries.

IOM is committed to the principle that humane and orderly migration benefits migrants and society. As an intergovernmental organization, IOM acts with its partners in the international community to: assist in the meeting of operational challenges of migration; advance understanding of migration issues; encourage social and economic development through migration; and uphold the human dignity and well-being of migrants.