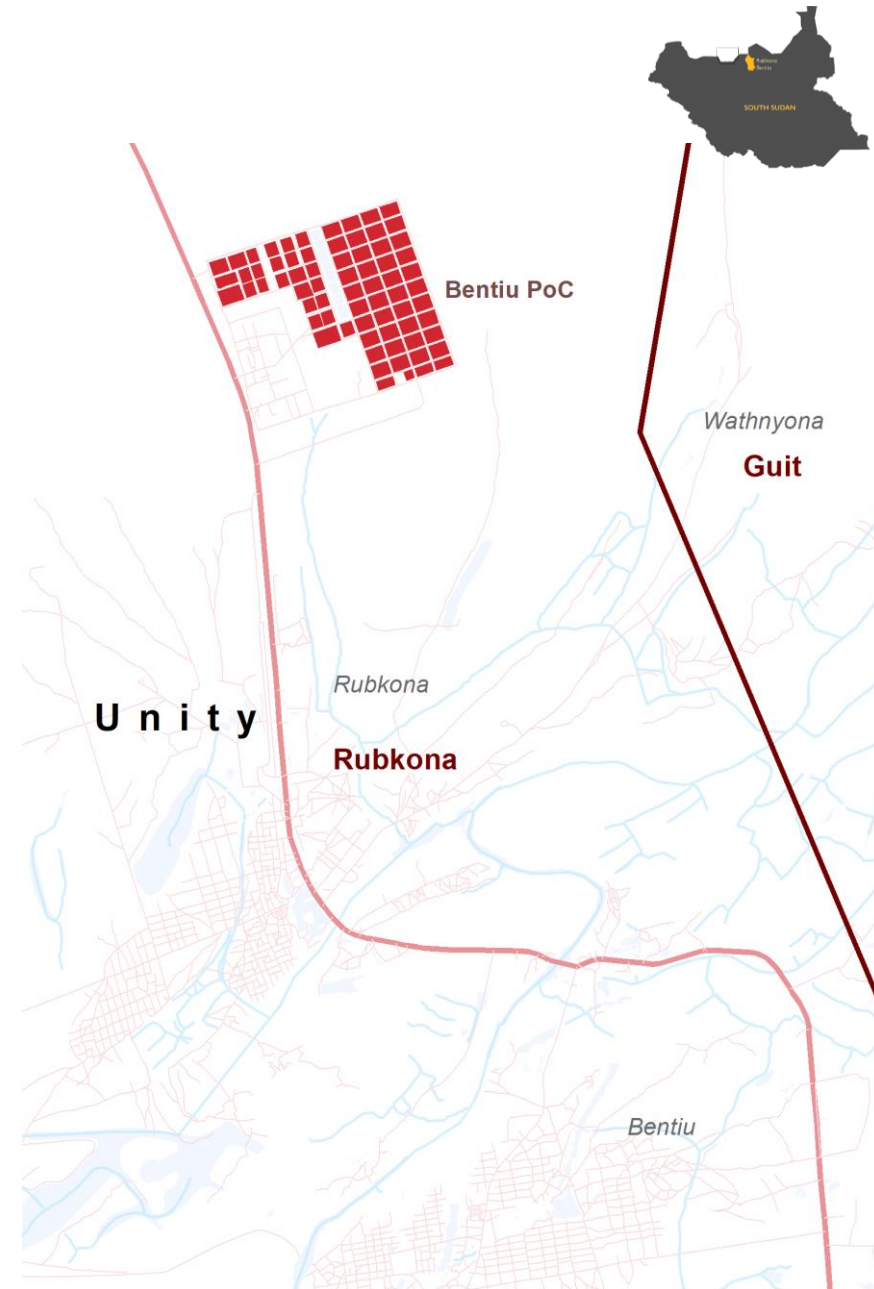
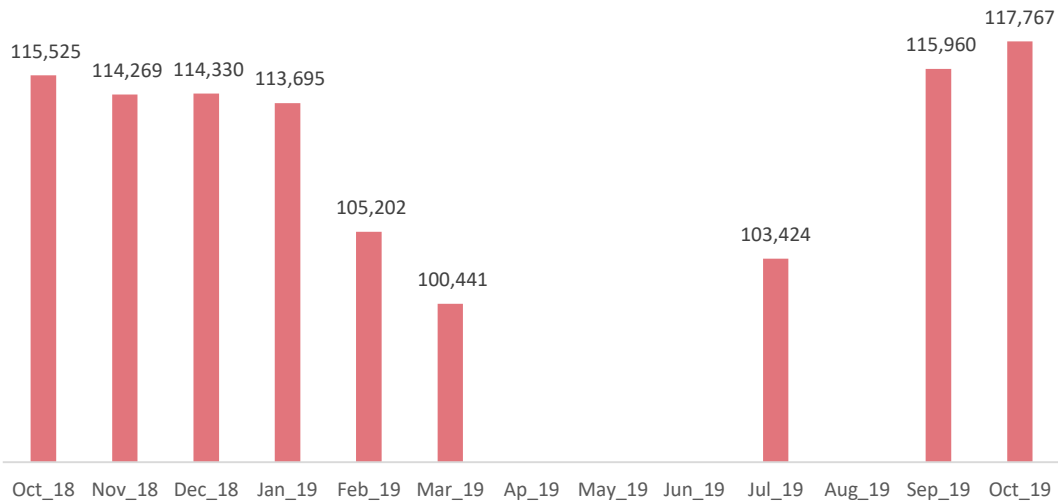


The Bentiu Protection of Civilian (PoC) site was established in December 2013. As of October 2019, 142,038 beneficiaries are registered as active beneficiaries in the site. However, recognizing that there have been significant population changes since the last biometric registration, IOM DTM conducts a monthly population count to monitor population dynamics and displacement trends.

As per the **October 2019 population count, the population stands at 117,767 individuals (16,610 households) in 12,053 inhabited shelters (on average 10 individuals per shelter)**. The PoC site had been decreasing in population throughout the first half of the year but reached its highest point of the year thus far in October 2019. [Displacement site flow monitoring](#) suggests that this increase could in large part be due to new arrivals from Sudan. For more information, please also consult the [Arrivals from Khartoum report](#).

### Monthly trend in Bentiu PoC, October 2018 – October 2019\*

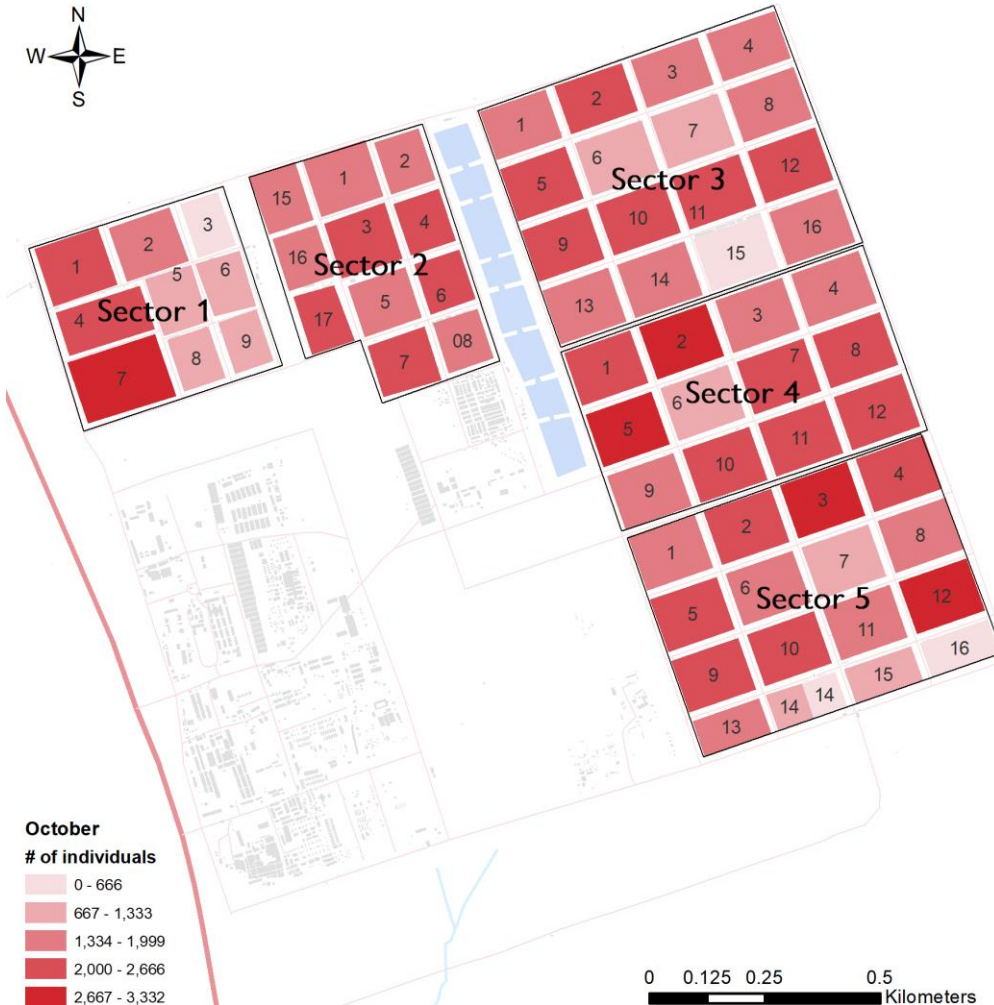
\*In April, May, June and August 2019 IOM was not able to conduct population count.





### Population in Bentiu PoC site (October 2019)

Sector 5 29,613	Sector 3 28,235	Sector 4 24,534	Sector 2 21,916	Sector 1 13,469
-----------------	-----------------	-----------------	-----------------	-----------------

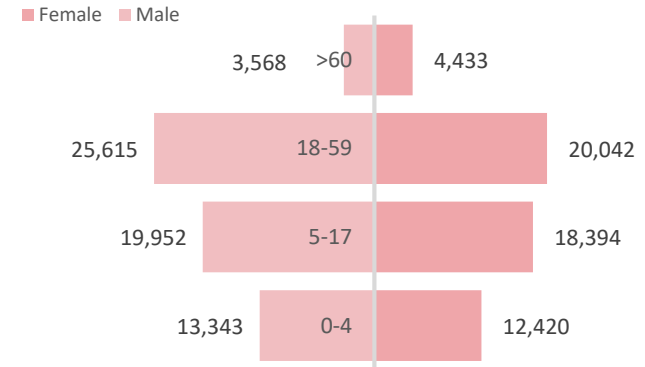


The most populous sector is Sector 5 with 25 per cent of the overall population, followed for sector 3 (24%) and Sector 4 (21%).

The blocks with the largest populations were found in block 12 of sector 5 (3,332 individuals) as well as block 7, sector 1 (2,987) and block 2, sector 4 (2,831).

### Bentiu PoC site, Population by age and sex, October 2019

117,767 individuals, 47% Female



For further information, contact [southsudandtm@iom.int](mailto:southsudandtm@iom.int) & visit <https://displacement.iom.int/south-sudan>.

DTM IS SUPPORTED BY

