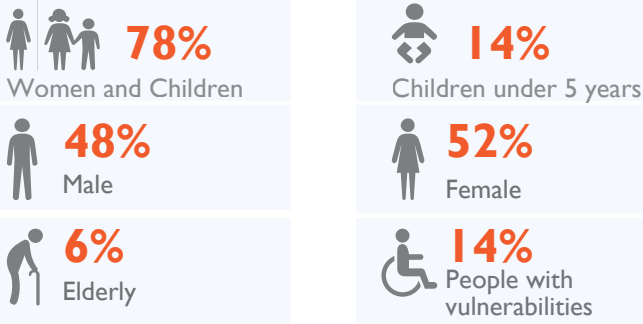
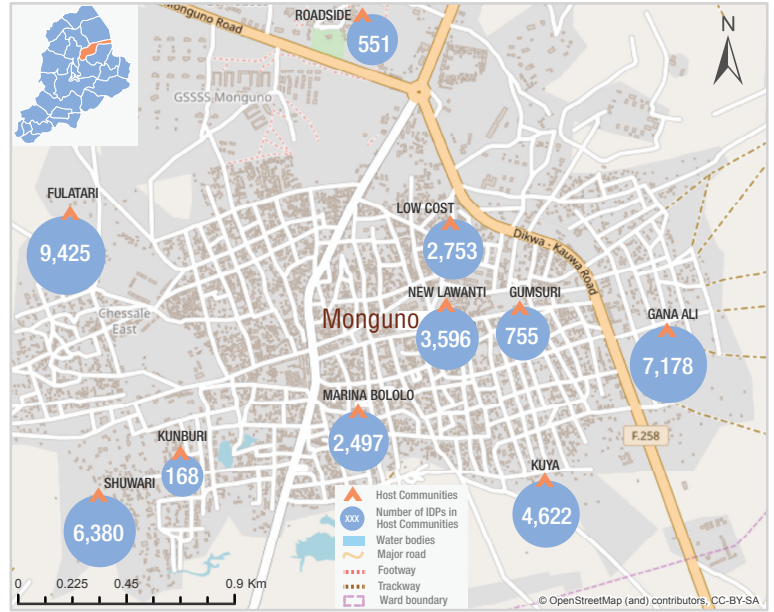
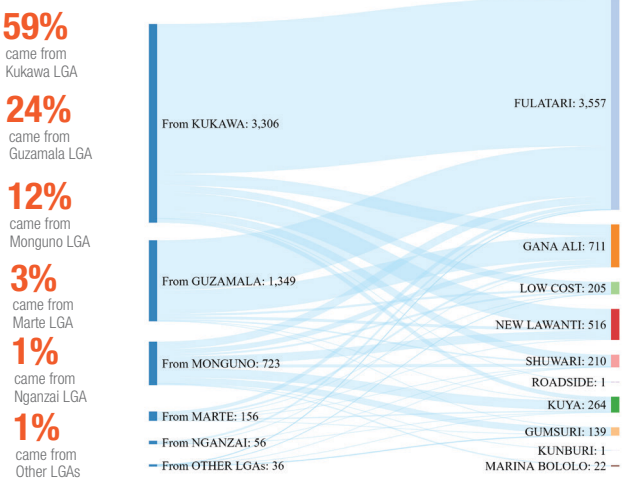


Biometric Registration Update | 30 November 2019

Total IDPs Registered in Host Communities
37,925 Individuals **11,373** Households



Total Newly Registered IDPs in Host Communities
5,626 Individuals **1,938** Households



The maps in this report are for illustration purposes only. The depiction of boundaries, geographic names, and related data shown on maps and included in this report are not warranted to be error free nor do they imply judgment on the legal status of any territory, or any endorsement or acceptance of such boundaries by IOM.

Following the completion of Biometric registration in host communities in Monguno Local Government Area (LGA) in the northeastern state of Borno, 37,925 individuals (11,373 households) were registered. This data is as of 30 November 2019. The average family size within these locations is 3; with 50 per cent containing 3-4 members, 32 per cent containing 1-2 members, 14 per cent containing 5-6 members, 3 per cent containing 7-8 members, and 1 per cent containing 9 and more members as shown below in figure 1a.

Out of the total registered population, 5,626 individuals (1,938 households) which represent 15 per cent were newly registered within the period of 1 April - 30 November 2019. Majority (59%) of the newly registered individuals are from Kukawa LGA, 24% from Guzamala LGA, 12% from wards within Monguno LGA, 3% from Marte, 1% from Nganzai and a further 1% from other LGAs in Borno.

During the exercise, vulnerability data was collected to help understand specific needs of the vulnerable population for targeted support. Out of the total population, 5,247 individuals (14 per cent) are experiencing some of the major vulnerability concerns captured in figure 1b below.

Fig. 1 Registered population by gender and age

Place of Registration	Location Details		Total		Male				Female					
	Location Type	SSID	HHS	Inds	0-4 y	5-17 y	18-59 y	60+ y	0-4 y	5-17 y	18-59 y	60+ y		
Fulatari	Host Community	BO_H361	2,886	9,425	4,506	4,919	695	1,521	2,017	273	716	1,411	2,572	220
Gana Ali	Host Community	BO_H543	2,146	7,178	3,517	3,661	480	1,434	1,384	219	498	1,212	1,771	180
Gumsuri	Host Community	Temp	223	755	348	407	48	144	135	21	59	143	191	14
Kunburi	Host Community	Temp	59	168	69	99	5	29	31	4	8	39	40	12
Kuya	Host Community	BO_H363	1,388	4,622	2,192	2,430	268	925	816	183	279	825	1,140	186
Low Cost	Host Community	BO_H359	834	2,753	1,320	1,433	161	594	485	80	167	484	692	90
Marina Bololo	Host Community	BO_H362	695	2,497	1,161	1,336	153	506	452	50	173	491	600	72
New Lawanti	Host Community	BO_H364	1,123	3,596	1,667	1,929	277	606	681	103	257	589	962	121
Roadside	Host Community	Temp	156	551	252	299	29	106	85	32	46	106	132	15
Shuware	Host Community	BO_H360	1,863	6,380	3,087	3,293	444	1,211	1,209	223	467	1,039	1,625	162
Total Registered			11,373	37,925	18,119	19,806	2,560	7,076	7,295	1,188	2,670	6,339	9,725	1,072
Percentage				100%	48%	52%	7%	19%	19%	3%	7%	17%	25%	3%

Fig. 1a Household size distribution

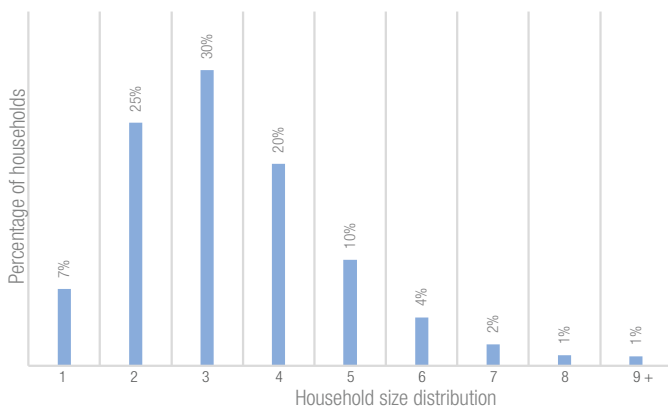
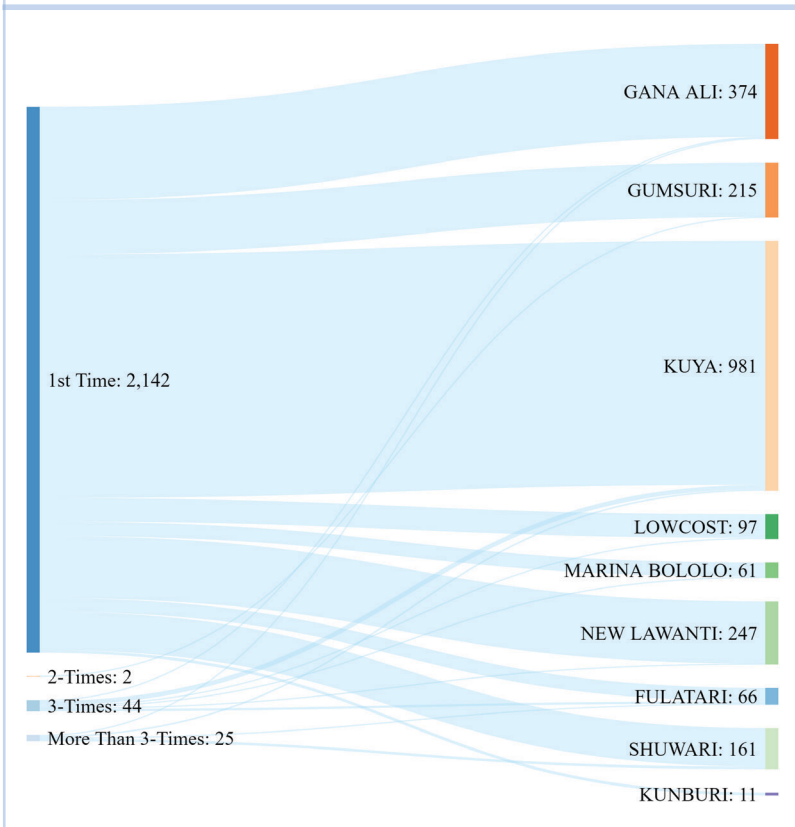


Fig. 1b Major Vulnerabilities

VULNERABILITIES CAPTURED	
TYPE	INDs
Breastfeeding	2,748
Pregnant	839
Special protection needs	836
Single parent	412
Seeing difficulty	123
Physically disabled	122
Separated children	48
Difficulty walking	39

MOVEMENTS RECORDED WITHIN THE PERIOD OF 1 APRIL - 30 NOVEMBER, 2019

MOVEMENTS OF IDPs DISPLACED WITHIN MONGUNO LGA



During the period of verification from 1 April to 30 November 2019, a total of 3,587 displaced individuals (926 households) in host communities were reported to have moved from one location to others within Monguno Local Government Area (LGA) in search of humanitarian assistance whenever there was distribution.

Out of the movements captured, 2,213 individuals (533 households) were those originally displaced from various wards in Monguno Local Government Area (LGA), of which 2,142 individuals (519 households) were first time movers, 2 individuals (1 household) moved twice, 44 individuals (8 households) moved three times and 25 individuals (5 households) moved more than three times to different host communities within the LGA.

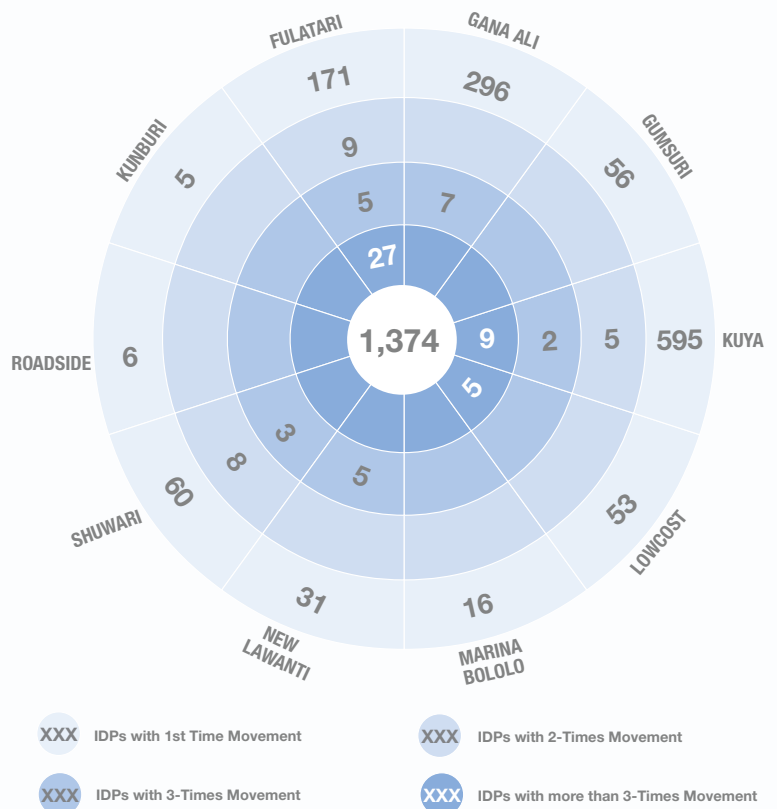
Kuya, Gana Ali, New Lawanti, Gumsuri and Shuwari recorded the major movements, with 981, 374, 247, 215 and 161 individuals respectively leaving the host communities to different locations within the LGA.

MOVEMENTS OF IDPs DISPLACED INTO MONGUNO HOST COMMUNITIES FROM OTHER LGAs

1,374 individuals (393 households) who were displaced into Monguno Local Government Area (LGA) from other LGAs within and outside Borno State were recorded.

It was discovered that out of the 1,374; 1,289 individuals (368 households) moved once from the host communities where they were initially registered to different locations within Monguno LGA, 22 individuals (8 households) moved twice, 22 individuals (7 households) moved thrice, while 41 individuals (10 households) moved more than three times to various locations in search of support.

Kuya, Gana Ali, Fulatari, Shuwari and Lowcost host communities recorded the major movements, with 611, 303, 212, 71 and 58 individuals respectively moving into different locations ranging from once to more than three times.



XXX IDPs with 1st Time Movement XXX IDPs with 2-Times Movement
XXX IDPs with 3-Times Movement XXX IDPs with more than 3-Times Movement