



## Biometric Registration Update | 30 November 2019

Biometric registration was recently concluded in camps and camp-like settings in Monguno Local Government Area (LGA) of the conflict-affected state of Borno. The total number of displaced persons registered (from 1 April to 30 November 2019) is 116,537 individuals (33,584 households). The average family size in these sites is 3: 45 per cent of the families are containing 3-4 members, 32 per cent containing 1-2 members, 18 per cent containing 5-6 members, 4 per cent containing 7-8 members, and 1 per cent containing 9 and more members as shown in figure 2 below.

Out of those captured, 10,627 displaced persons (3,651 households) were newly registered, with 46% from Kukawa LGA, 20% from other wards in Monguno LGA, 20% from Guzamala, 11% from Marte, 2% from Nganzai and 1% from other LGAs in Borno State.

Vulnerability data was also collected to help understand specific needs of the vulnerable population in the camps. In total, 15,742 individuals were identified with various vulnerabilities. Figure 3 below shows some of the major vulnerability concerns captured.

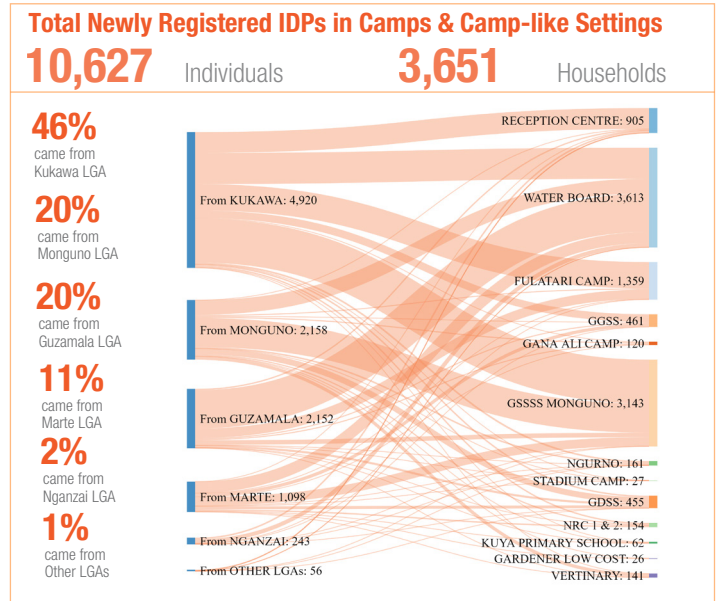
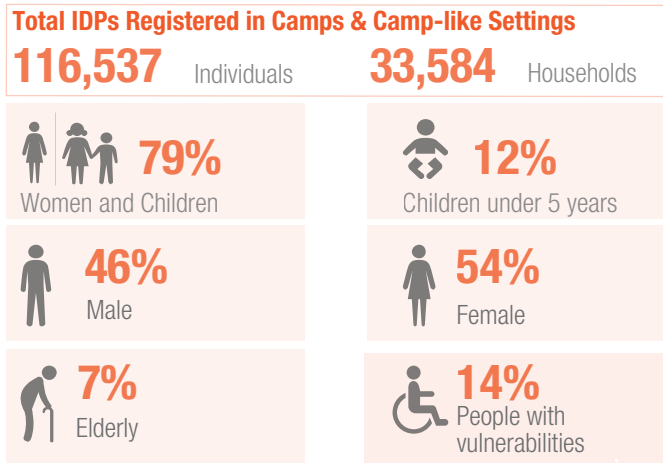


Fig. 1 Registered population by gender and age

Place of Registration	Site Details		Total				Male				Female			
	Site Type	SSID	HHs	Inds	Male	Female	0-4 y	5-17 y	18-59 y	60+ y	0-4 y	5-17 y	18-59 y	60+ y
Fulatari Camp	camp	BO_S203	2,659	8,998	4,193	4,805	593	1,689	1,635	276	597	1,665	2,338	205
Gana Ali Camp	camp	BO_S094	997	3,615	1,667	1,948	267	693	603	104	251	695	898	104
Gardener Low Cost	camp	BO_S096	234	838	383	455	57	153	148	25	60	158	207	30
Government Day Sec Sch (GDSS)	camp	BO_S098	1,054	3,849	1,743	2,106	189	739	677	138	185	785	982	154
Government Girls Sec Sch (GGSS)	camp	BO_S059	6,013	21,479	9,985	11,494	1,449	4,320	3,439	777	1,405	4,308	5,105	676
GSSSS Monguno	camp	BO_S133	7,179	24,555	11,409	13,146	1,194	4,778	4,635	802	1,225	4,871	6,228	822
Kuya Primary School	camp	BO_S092	3,009	10,792	4,961	5,831	616	2,210	1,762	373	663	2,217	2,618	333
Ngurno	camp	BO_S091	1,673	5,523	2,559	2,964	282	1,123	968	186	214	1,095	1,414	241
NRC 1 & 2	camp	BO_S099	1,273	4,393	2,030	2,363	272	887	732	139	297	886	1,066	114
Reception Centre	camp	Temp	533	1,802	784	1,018	185	308	221	70	168	336	475	39
Stadium Camp	camp	BO_S230	885	3,151	1,409	1,742	248	637	453	71	248	628	747	119
Vertinary	camp	BO_S177	754	2,835	1,384	1,451	165	588	532	99	152	514	685	100
Waterboard	camp	BO_S097	7,321	24,707	11,474	13,233	1,665	4,520	4,488	801	1,589	4,415	6,484	745
<b>Total Registered</b>			<b>33,584</b>	<b>116,537</b>	<b>53,981</b>	<b>62,556</b>	<b>7,182</b>	<b>22,645</b>	<b>20,293</b>	<b>3,861</b>	<b>7,054</b>	<b>22,573</b>	<b>29,247</b>	<b>3,682</b>
<b>Percentage</b>				<b>100%</b>	<b>46%</b>	<b>54%</b>	<b>6%</b>	<b>19%</b>	<b>17%</b>	<b>4%</b>	<b>6%</b>	<b>19%</b>	<b>25%</b>	<b>3%</b>

Fig. 2 Household size distribution

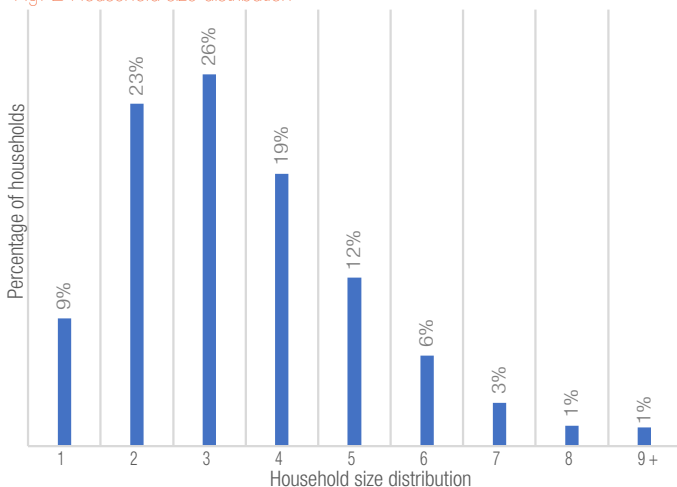
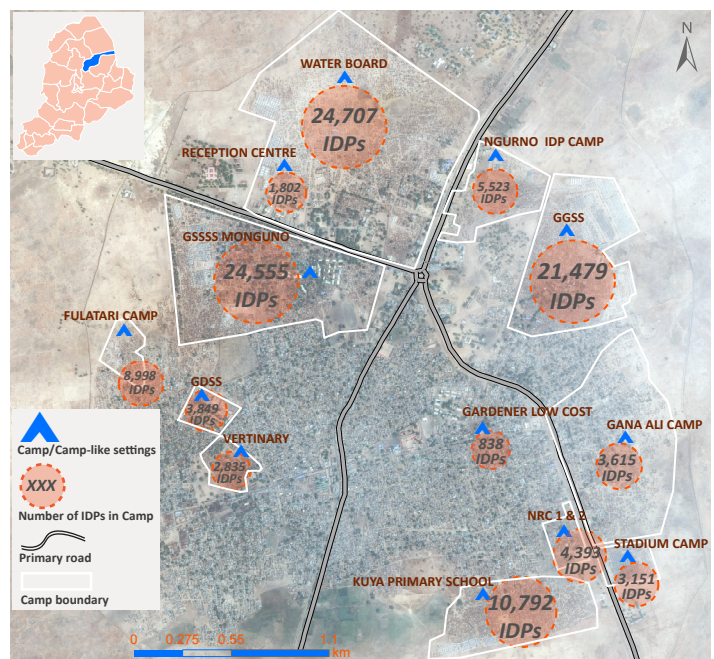


Fig. 3 Major Vulnerabilities

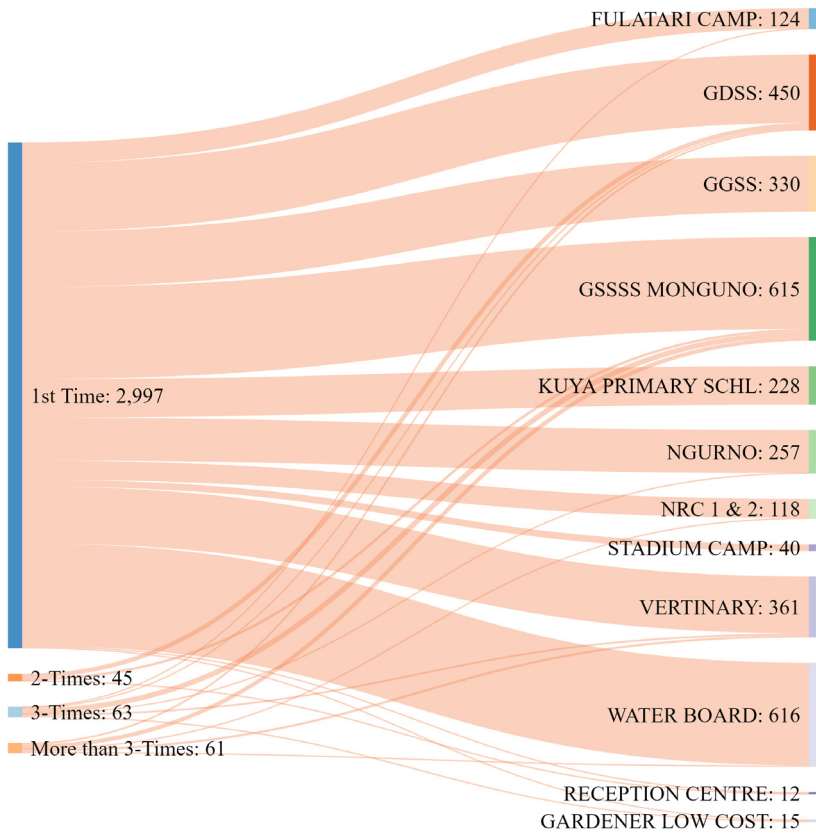
VULNERABILITIES CAPTURED			
TYPE	INDs	TYPE	INDs
Breastfeeding	8,378	Physically disabled	362
Special protection needs	2,758	Seeing difficulty	258
Pregnant	2,176	Difficulty walking	127
Single parent	1,337	Serious medical condition	110



The maps in this report are for illustration purposes only. The depiction and use of boundaries, geographic names, and related data shown on maps and included in this report are not warranted to be error free nor do they imply judgment on the legal status of any territory or boundaries by IOM.

# MOVEMENTS RECORDED WITHIN THE PERIOD OF 1 APRIL - 30 NOVEMBER, 2019

## MOVEMENTS OF IDPs DISPLACED WITHIN MONGUNO LGA



During the period of verification from 1 April to 30 November 2019, a total of 10,461 displaced individuals (2,628 households) in camps and camp-like settings were reported to have moved from one location to others within Monguno Local Government Area (LGA) in search of humanitarian assistance whenever there was distribution.

Out of the movements captured, 3,166 individuals (744 households) were those originally displaced from various wards in Monguno Local Government Area (LGA). It was discovered that 2,997 individuals (708 households) were first time movers, 45 individuals (10 households) moved twice, 63 individuals (15 households) moved three times and 61 individuals (11 households) moved more than three times to various locations (camp and camp-like settings) within Monguno LGA.

Waterboard Camp, GSSSS Monguno, Government Day Secondary School (GDSS), Vertinary and Government Girls Secondary School (GGSS) recorded the major movements, with 616, 615, 450, 361 and 330 individuals respectively leaving the camps for other locations.

## MOVEMENTS OF IDPs DISPLACED INTO CAMPS WITHIN MONGUNO LGA FROM OTHER LGAs

7,295 individuals (1,884 households) who were displaced into Monguno Local Government Area (LGA) from other LGAs within and outside Borno State were recorded.

It was recorded that out of 7,295; 6,869 individuals (1,777 households) moved once from camps where they were initially registered to different locations within Monguno LGA, 113 individuals (25 households) moved twice, 160 individuals (41 households) moved thrice, while 153 individuals (41 households) moved more than three times to various locations in search of support.

Fulatari Camp, Waterboard Camp, GSSSS Monguno, Reception Centre and Government Day Secondary School (GDSS) recorded the major movements, with 1,555, 1,524, 1,091, 1,001 and 857 individuals respectively moving into different locations ranging from once to more than three times.

