

This map is for illustration purposes only. Names and boundaries on this map do not imply official endorsement or acceptance by IOM.

Current IDP locations and locations of origin in El Geneina

The DTM Emergency Event Tracking (EET) is deployed to track sudden displacement and population movements, and provide more frequent updates on the scale of displacement and quantify the affected population when needed. As a subcomponent of the new Mobility Tracking methodology in Sudan ([Round Zero](#)), and activated on a need basis, EET utilises a broad network of key informants to capture best estimates of the affected population presence per location – a useful tool for humanitarian response planning and design.

## Event Overview

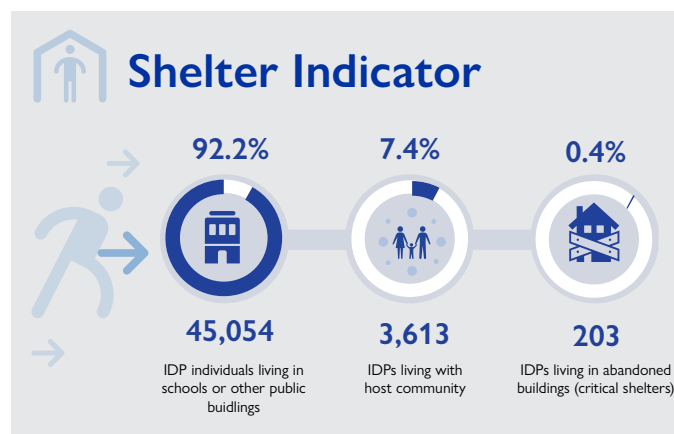


DTM teams activated EET to monitor the displacement of individuals affected by the inter-communal violence in El Geneina – for more information see [EET El Geneina 1](#). Across 37 sites, the second EET update estimates a total number of 48,870 displaced individuals (9,820 households) present. Internally displaced persons (IDPs) arrived from eight different locations of origin within El Geneina, West Darfur.

Location of Origin	# IDPs Individuals	# IDPs Housholds
Krinding 2	32,209	6,856
Krinding 1	8,672	1,524
Sultan House	5,364	881
Baradia Village	1,347	282
Gokar Village	1,031	216
Hashaba Village	208	56
Deltung Village	24	2
Triaa Village	15	3
<b>Grand Total</b>	<b>48,870</b>	<b>9,820</b>

Total number of IDP individuals per location of origin within El Geneina locality, West Darfur.

Through DTM registration activities, IOM will be verifying these figures over the upcoming weeks to provide partners with beneficiary lists for their direct assistance.



### IOM DISCLAIMER

The opinions expressed in the report are those of the authors and do not necessarily reflect the views of the International Organization for Migration (IOM). The designations employed and the presentation of material throughout the report do not imply the expression of any opinion whatsoever on the part of IOM concerning the legal status of any country, territory, city or area, or of its authorities, or concerning its frontiers or boundaries.

IOM is committed to the principle that humane and orderly migration benefits migrants and society. As an intergovernmental organization, IOM acts with its partners in the international community to: assist in the meeting of operational challenges of migration; advance understanding of migration issues; encourage social and economic development through migration; and uphold the human dignity and well-being of migrants.