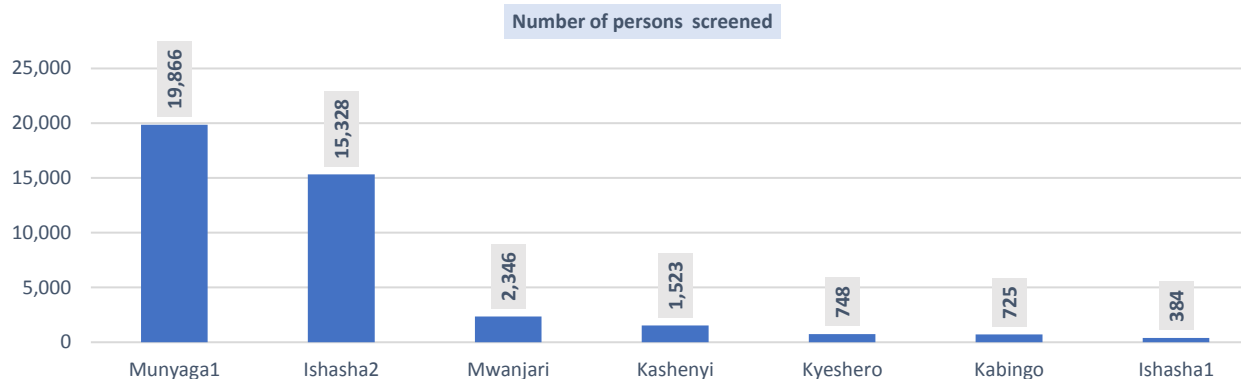
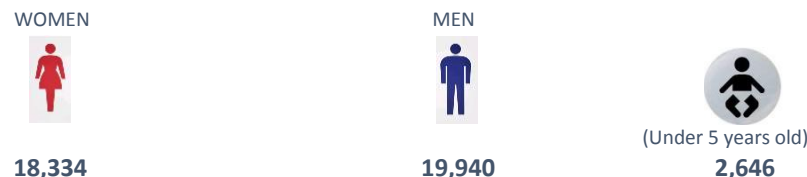


Screenings	Persons isolated	Persons referred
40,920	0	0
Cumulative from 8 <sup>th</sup> April 2019		
657,150	334	7

### DETAILS PER POE

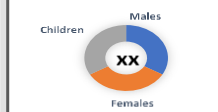


### Total number of screenings, disaggregated by gender and age

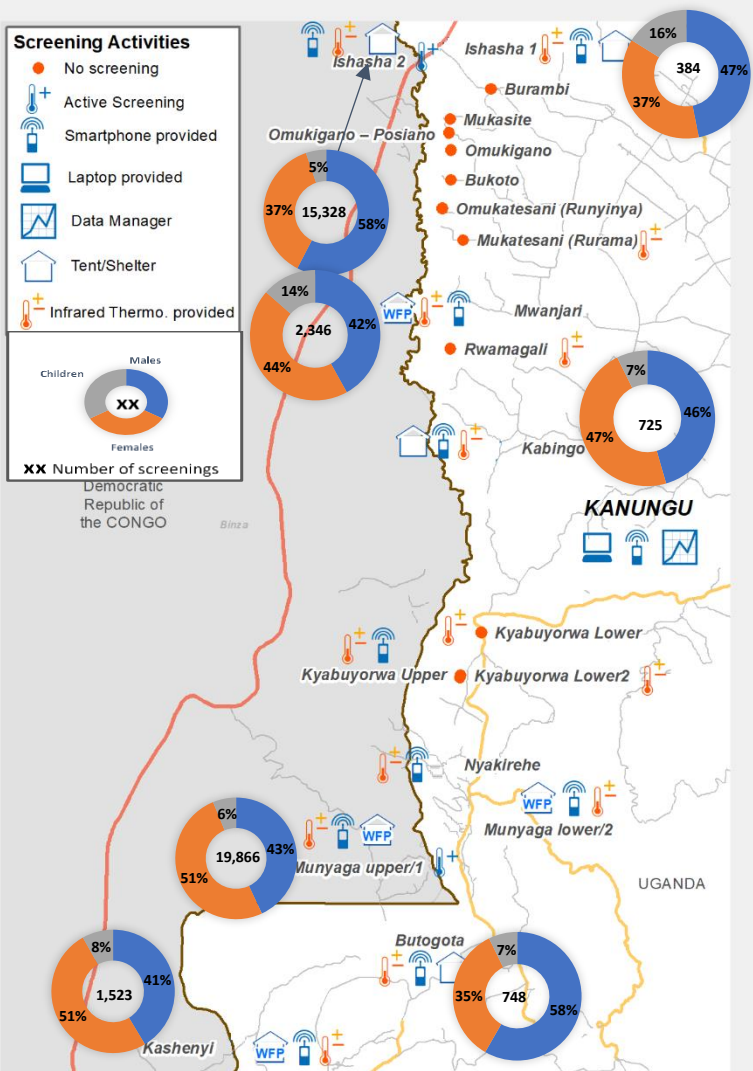


### Screening Activities

- No screening
- + Active Screening
- + Smartphone provided
- + Laptop provided
- + Data Manager
- + Tent/Shelter
- + Infrared Thermo. provided



XX Number of screenings  
Democratic Republic of the CONGO



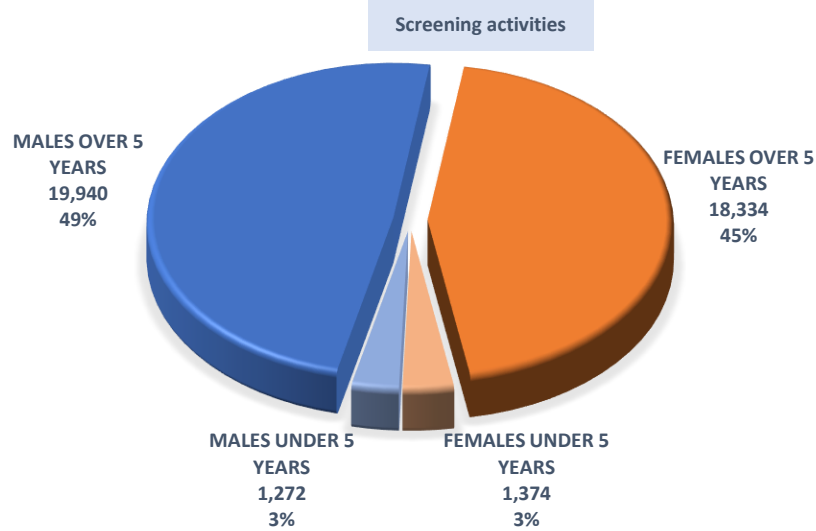
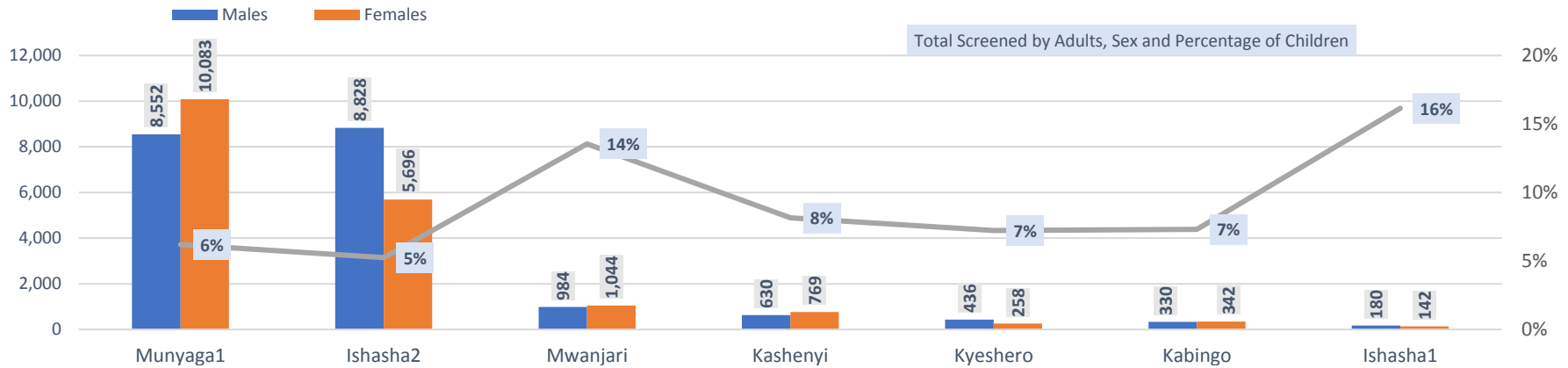
### Overview

#### Screening operation

- Seven (7) of the referenced Points of Entry (PoEs) had active screening activities during the reporting period. Two (2) of them are official PoEs (Ishasha2 and Kyeshero/Butogota). Munyaga1 and Ishasha2 had active screening activities throughout the reporting period whereas Mwanjari, Kashenyi, Kyeshero, Kabingo and Ishasha1 had screening activities up to December 4th.
- A total of 40,920 people were screened through seven (7) PoEs during the reporting period.
- Munyaga1 registered the highest number of persons screened (19,866) followed by Ishasha2 (15,328).

#### Demographic

- Ratio of adult males and adult females was 49:45.
- More adult males than adult females crossed at Ishasha2 (58%) mainly due to cross-border trading activities at Ishasha2 official PoE.
- 6% were children under 5 years old. The children under 5 years old were mostly in the company of female parents or relatives that were crossing to Kanungu to trade.



Ishasha1 has a higher percentage of children under 5 years old (16%) which can be explained by the number of women, mainly asylum seekers, who move with their toddlers and enter Uganda through this informal PoE.

The type of flows is influenced by the land configuration (mountainous, forest...) and the type of PoE (formal or informal). The type of access road (main road or rural road) influences the type of flow as well as the reason for travelling. The presence of markets and agricultural activities is a pull factor and may attract more adult women than men.

