



# EMERGENCY TRACKING TOOL (ETT)

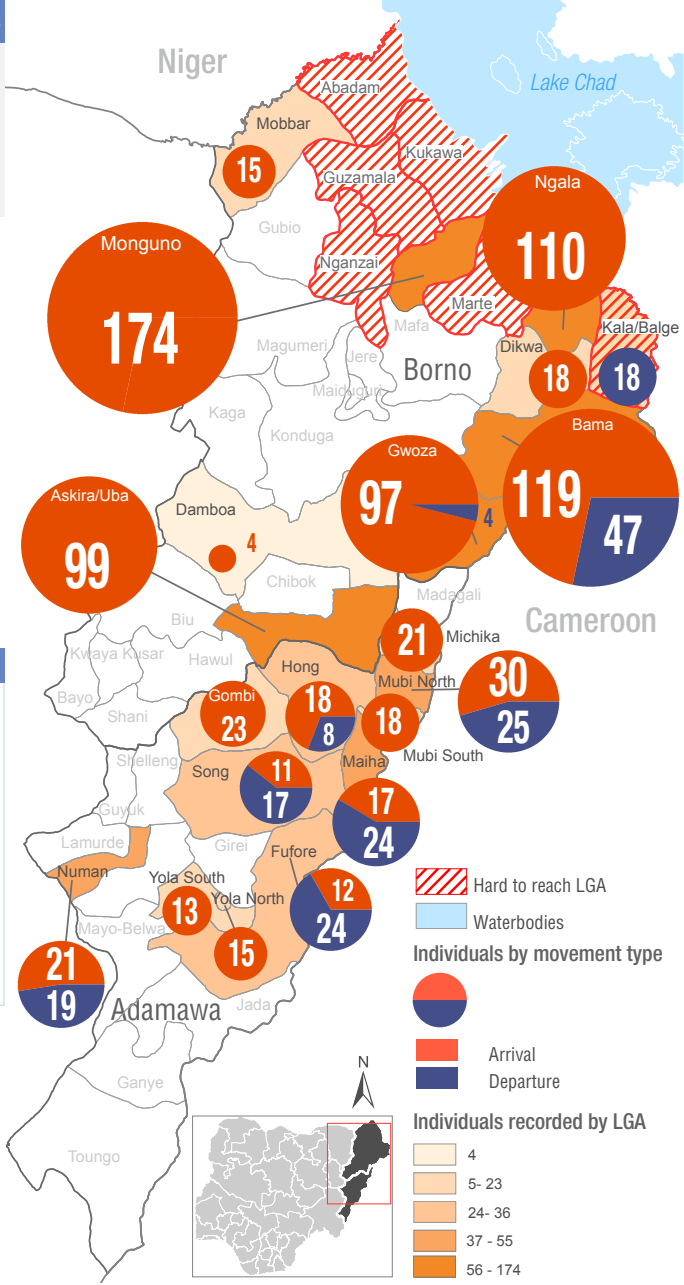
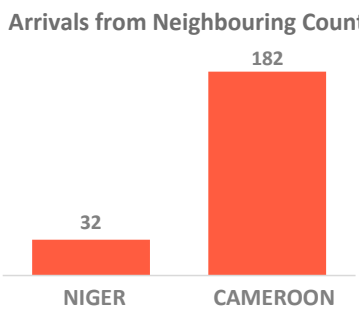
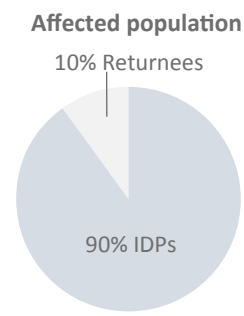
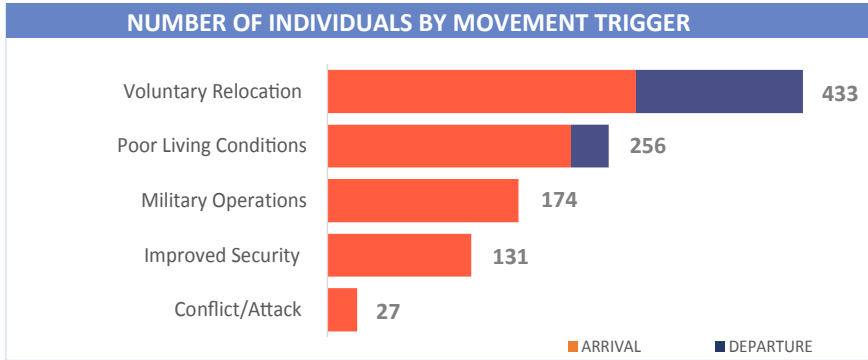
DTM Emergency Tracking Tool (ETT) is deployed to track and provide up-to-date information on sudden displacement and other population movements

## ETT Report: No. 151 | 23 - 29 December 2019

MOVEMENTS	NEW ARRIVAL SCREENING BY NUTRITION PARTNERS
<p><b>Arrivals:</b> 835 individuals</p> <p><b>Departures:</b> 186 individuals</p>	<p><b>85</b> Children (6-59 months) screened for malnutrition</p> <p><b>MUAC category of screened children</b></p> <p>Green: 76   Yellow: 6   Red: 3</p>

During the period of 23 – 29 December 2019, a total of 1,021 movements were recorded, which composed of 835 arrivals and 186 departures. Arrivals were recorded at locations in Askira/Uba, Bama, Damboa, Dikwa, Gwoza, Mobbar, Monguno and Ngala Local Government Areas (LGAs) of Borno State. Arrivals were also recorded in Fufore, Gombi, Hong, Maiha, Michika, Mubi North, Mubi South, Numan, Song, Yola North and Yola South LGAs of Adamawa State. Departures were recorded in Bama, Gwoza and Kala/Balge LGAs of Borno State. Departures were also recorded in Fufore, Hong, Maiha, Mubi North, Numan, Song, Yola North and Yola South LGAs of Adamawa State.

ETT assessments identified the following movement triggers: voluntary relocation (42%), poor living conditions (25%), military operations (17%), improved security (13%) and conflict/attack (3%).



\* Movements in Kala/Balge were captured by ETT outreach staff in the LGA

## SUMMARY OF MAJOR MOVEMENTS

**Monguno:** 174 arrivals were recorded in Monguno LGA of Borno State arriving from Gudumbali ward of Guzamala LGA. The arrivals were all due to military operations.

**Bama:** 119 arrivals and 47 departures were recorded in Bama LGA of Borno State. The arrivals include 37 from Goniri ward and 23 from Buduwa/Bula Chirabe ward and were tracked in Shehuri/Hausari/Mairi ward. Other arrivals include 1 from Shehuri North ward of Maiduguri Metropolitan Council, 1 from Pulka Bokko ward of Gwoza LGA, 36 from Mora and 19 from Mokolo of Cameroon. The 47 departures were from Shehuri/Hausari/Mairi ward. 67% of the new arrivals reported to have relocated voluntarily while 33% were due to poor living conditions. The departures were all voluntarily.

**Ngala:** 110 arrivals were recorded in Ngala LGA of Borno State. The arrivals include 85 from Makary and 25 from Darak of Cameroon. The arrivals were all due to poor living conditions.

**Gwoza:** 97 arrivals and 4 departures were recorded in Gwoza LGA of Borno State. The arrivals include 3 from Dure ward and were tracked in Pulka Bokko ward, 19 from Mairi ward of Bama LGA and 8 from Kingowa ward of Gubio LGA. Other arrivals include 17 from Diffa of Niger Republic, 22 from Hong LGA, 21 from Maiha LGA and 7 from Mubi North LGA of Adamawa State. The 4 departures were from Pulka Bokko ward. 37% of the new arrivals reported to have relocated voluntarily, 35% due to poor living conditions while 28% were reportedly due to the ongoing conflict/attack. The departures were all voluntarily.

## NEW ARRIVAL MALNUTRITION SCREENING SUMMARY (CHILDREN 6-59 MONTHS)

An exhaustive nutrition screening using monitoring of symptoms of acute malnutrition mid upper arm circumference (MUAC) and Oedema was conducted by Nutrition Sector partners for 85 children of 6-59 months. Of the 85 children screened, the MUAC reading recorded 3 children (from an accessible area) in the Red category, 6 in the Yellow category and 76 measured in the Green category. No cases of Oedema was reported in the 4 LGAs that reports were received from.

The results also include 54 children from neighbouring Cameroon and Republic of Niger (21 children moved to Bama, 3 to Gwoza, 5 to Mobbar and 25 moved to Ngala); of all the 54 children measured, two (2) children were in the red category, 47 in the green category and 5 measured in the yellow category. All children found with acute malnutrition have been admitted for treatment.

Please note, the data presented are not surveillance results and should be interpreted with caution.

LGA	MUAC Categories						Total
	Green ( $\geq 12.5\text{cm}$ )		Yellow (11.5 cm - 12.5cm)		Red ( $< 11.5\text{cm}$ )		
	Inaccessible	Accessible	Inaccessible	Accessible	Inaccessible	Accessible	
Bama	3	29	0	1	0	2	35
Gwoza	0	19	0	1	0	0	20
Mobbar	0	4	0	1	0	0	5
Ngala	0	21	0	3	0	1	25
<b>Total</b>	<b>3</b>	<b>73</b>	<b>0</b>	<b>6</b>	<b>0</b>	<b>3</b>	<b>85</b>

■ Nourished

■ Moderate Acute Malnutrition (MAM)

■ Severe Acute Malnutrition (SAM)

**Table 1. Details of movements by locations of assessment and locations of arrival / departure - only movements with at least 11 persons are listed below**

Movement Location			Tracking Location					
STATE	LGA	WARD	STATE2	LGA2	WARD2	ARRIVAL	DEPARTURE	Grand Total
ADAMAWA	FUFORE	BETI	ADAMAWA	YOLA SOUTH	ADARAWO	12	-	12
		FUFORE		DEMSA	BORRONG A	-	24	24
	GOMBI	GARKIDA	ADAMAWA	HONG	KWARHI	19	-	19
	HONG	DAKSIRI	ADAMAWA	HONG	THILBANG	18	-	18
	MAIHA	KONKOL	ADAMAWA	MAIHA	PAKKA	-	16	16
		SORAU A	CAMEROON	MFOUNDI	YAOUNDE	17	-	17
	MICHIKA	MICHIKA I	ADAMAWA	YOLA SOUTH	BOLE/YOLDE PATE	21	-	21
	MUBI NORTH	MAGO BANI	ADAMAWA	MICHIKA	MICHIKA I	17	-	17
		SABON LAYI	BORNO	ASKIRA UBA	UBA	-	25	25
	MUBI SOUTH	GUDE	BORNO	ASKIRA UBA	CHULL/RUMIRGO	18	-	18
	NUMAN	IMBURU	ADAMAWA	LAMURDE	LAFIYA	-	19	19
		SABON PEGI		YOLA NORTH	GWADABAWA	21	-	21
	SONG	SONG WAJE	ADAMAWA	HONG	HONG	11	-	11
		WANTADI	ZAMFARA	TALATA MAFARA	TALATA MAFARA	-	12	12
BORNO	ASKIRA/UBA	ASKIRA EAST	BORNO	ASKIRA UBA	HAUSARI/ZADAWA	29	-	29
		CHULL/RUMIRGO	ADAMAWA	MUBI SOUTH	GUDE	18	-	18
			BORNO	ASKIRA UBA	ASKIRA EAST	18	-	18
		UBA	ADAMAWA	MUBI NORTH	SABON LAYI	25	-	25
	BAMA	BUDUWA / BULA CHIRABE	CAMEROON	MAYO-TSANAGA	MOKOLO	19	-	19
			BORNO	BAMA	BUDUWA / BULA CHIRABE	23	-	23
		SHEHURI / HAUSARI / MAIRI	BORNO	GONIRI	GONIRI	39	-	39
			KONDUGA	KONDUGA	-	37	37	
		CAMEROON	MAYO-SAVA	MORA	29	-	29	
	DIKWA	DIKWA CENTRAL	LAGOS	LAGOS	IKORODU	14	-	14
	GWOZA	GWOZA WAKANE/BULABULIN	ADAMAWA	HONG	UBA	16	-	16
			MAIHA	KAPPA	19	-	19	
		PULKA BOKKO	BORNO	BAMA	SHEHURI / HAUSARI / MAIRI	19	-	19
	KALA BALGE	RANN "A"	BORNO	NGALA	NGALA	-	18	18
REPUBLIC OF NIGER			DIFFA	CHETIMARI	17	-	17	
MOBBAR	DAMASAK CENTRAL	REPUBLIC OF NIGER	DIFFA	CHETIMARI	15	-	15	
MONGUNO	MONGUNO	BORNO	GUZAMALA	GUDUMBALI	174	-	174	
NGALA	NGALA	CAMEROON	LOGONE-ET-CHARI	DARAK	25	-	25	
				MAKARY	85	-	85	

The depiction and use of boundaries, geographic names, and related data shown on maps and included in this report are not warranted to be error free nor do they imply judgment on the legal status of any territory, or any endorsement or acceptance of such boundaries by IOM. MUAC data is provided by UNICEF.

For more information or to report an alert, please contact:

Henry Kwenin, DTM Project Coordinator: [hkwenin@iom.int](mailto:hkwenin@iom.int) | +234 903 8852 524

Dave Bercasio, Emergency Coordinator: [dbercasio@iom.int](mailto:dbercasio@iom.int) | +234 907 5070 001

DTM information products: <http://nigeria.iom.int/dtm>

