

SITE PROFILE

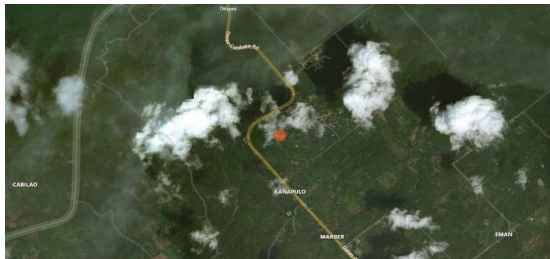
Mt. Carmel Tent City

Brgy. Kinuskusan, Bansalan, Davao del Sur

80 FAMILIES	400 PERSONS	LATITUDE 6.8514722
		LONGITUDE 125.1646944

PRIORITY NEEDS

1st priority	Shelter
2nd priority	Non-food items
3rd priority	Non-food items



REASONS PREVENTING RETURN OF IDPs

Basic infrastructure damaged/destroyed

SITE DETAILS

Survey date	15 November 2019
Site ID	25
Site type	Empty Lot
Site classification	Spontaneous settlement
Date majority displaced	30 October 2019

CAMP COORDINATION AND CAMP MANAGEMENT

Site Management Committee (SMC)	Yes
IDPs members of SMC	No data
Organization/agency managing the site	Government
Registration activity	Yes
Service providers contact list visible on-site	Yes

SHELTER AND NON-FOOD ITEMS (NFI)

Most common type of shelter	Tent
Available NFIs	Water container, hygiene kits

WATER, SANITATION AND HYGIENE

Main source of water	Spring
Distance to main source of water	Onsite (<20 minutes)
Number of functioning toilets	2
Separate male and female latrines	Yes
Separate male and female bathing areas	Yes
Solid waste management	Unknown

FOOD AND NUTRITION

Frequency of food distribution	Irregular
Supplemental feeding for pregnant/lactating	No
Supplemental feeding for children	No

HEALTH

Prevalent health problems	Cough
Distance to nearest health facility	0-100 m

EDUCATION

Access to formal/informal education	Yes
Number of children attending school	No data
Distance to nearest education facility	0-1 km

PROTECTION

Frequency of psychosocial support	Irregular
Security provided on-site	Yes
Security incidents are reported	No
Lighting in majority of communal points	Adequate

LIVELIHOOD

Typical sources of livelihood
Cash for work (from Mt. Carmel)

INFORMATION NEEDS

Return, resettlement or migration options

Information on groups with special needs is available upon request by parties with Data Sharing Agreements with IOM.