

SITE PROFILE

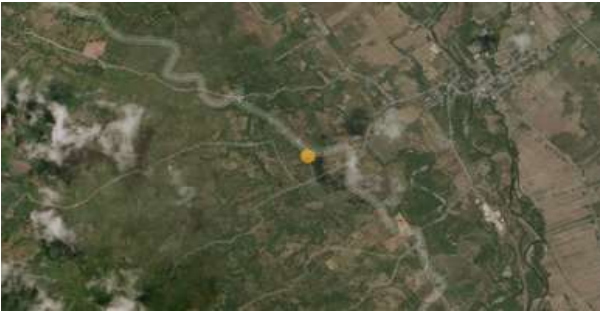
San Miguel Elementary School

Brgy. San Miguel, Magsaysay, Davao del Sur

157 FAMILIES      635 PERSONS      LATITUDE 6.7445033  
LONGITUDE 125.1347805

PRIORITY NEEDS

1st priority WASH  
2nd priority WASH  
3rd priority WASH



REASONS PREVENTING RETURN OF IDPs

Evacuation center inside the school premise. The principal already advised the camp manager that these IDPs need to be relocated.

SITE DETAILS

Survey date	19 November 2019
Site ID	17
Site type	School
Site classification	Government-identified EC
Date majority displaced	16 October 2019
Government-recognized	Yes
IDPs are for relocation	No
Site hosts indigenous people	Yes
IP groups in site	B'laan

CAMP COORDINATION AND CAMP MANAGEMENT

Site Management Committee (SMC)	Yes
IDPs members of SMC	N/A
Organization/agency managing the site	Government
Registration activity	Yes
Service providers contact list visible on-site	Yes

SHELTER AND NON-FOOD ITEMS (NFI)

Most common type of shelter	Tent
Available NFIs	None

WATER, SANITATION AND HYGIENE

Main source of water	River, water form delivery trucks
Distance to main source of water	on-site, >20 minutes
Number of functioning toilets	10
Separate male and female latrines	Yes
Separate male and female bathing areas	No
Solid waste management	Garbage pickup n/a

FOOD AND NUTRITION

Frequency of food distribution	Irregular
Supplemental feeding for pregnant/lactating	Yes
Supplemental feeding for children	Yes

HEALTH

Prevalent health problems	Cough, colds, 8 cases of diarrhea
Distance to nearest health facility	N/A

EDUCATION

Access to formal/informal education	Yes
Number of children attending school	None
Distance to nearest education facility	0-1 km

PROTECTION

Frequency of psychosocial support	Irregular
Security provided on-site	Yes
Security incidents are reported	No
Lighting in majority of communal points	Unknown

LIVELIHOOD

Typical sources of livelihood	N/A
-------------------------------	-----

INFORMATION NEEDS

Documents, food distribution, water and sanitation, protection services, legal services, security situation, distribution of non-food items, return, resettlement or migration

Information on groups with special needs is available upon request by parties with Data Sharing Agreements with IOM.