

SITE PROFILE

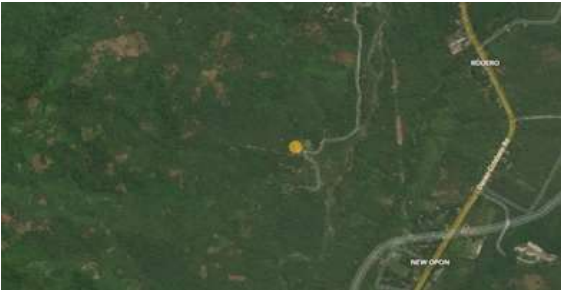
Rodero Elementary School (Camp 1)

Brgy. Barangay Rodero, Makilala, North Cotabato

102 FAMILIES 510 PERSONS LATITUDE 6.8877056
LONGITUDE 125.1561

PRIORITY NEEDS

1st priority	Shelter
2nd priority	WASH
3rd priority	Non-food items



REASONS PREVENTING RETURN OF IDPs

House damaged/destroyed

SITE DETAILS

Survey date	19 November 2019
Site ID	11
Site type	School
Site classification	Government-identified EC
Date majority displaced	29 October 2019
Government-recognized	Yes
IDPs are for relocation	Yes
Site hosts indigenous people	No
IP groups in site	N/A

CAMP COORDINATION AND CAMP MANAGEMENT

Site Management Committee (SMC)	Yes
IDPs members of SMC	N/A
Organization/agency managing the site	Government
Registration activity	Yes
Service providers contact list visible on-site	Yes

SHELTER AND NON-FOOD ITEMS (NFIs)

Most common type of shelter	Tent
Available NFIs	Blanket, water container, hygiene kits

WATER, SANITATION AND HYGIENE

Main source of water	Spring
Distance to main source of water	Onsite (>20 minutes)
Number of functioning toilets	2
Separate male and female latrines	Yes
Separate male and female bathing areas	Yes
Solid waste management	Garbage pickup n/a

FOOD AND NUTRITION

Frequency of food distribution	Irregular
Supplemental feeding for pregnant/lactating	No
Supplemental feeding for children	No

HEALTH

Prevalent health problems	Cough
Distance to nearest health facility	N/A

EDUCATION

Access to formal/informal education	Yes
Number of children attending school	None
Distance to nearest education facility	0-1 km

PROTECTION

Frequency of psychosocial support	Irregular
Security provided on-site	Yes
Security incidents are reported	No
Lighting in majority of communal points	Inadequate

LIVELIHOOD

Typical sources of livelihood	No answer
-------------------------------	-----------

INFORMATION NEEDS

Return, resettlement or migration options

Information on groups with special needs is available upon request by parties with Data Sharing Agreements with IOM.