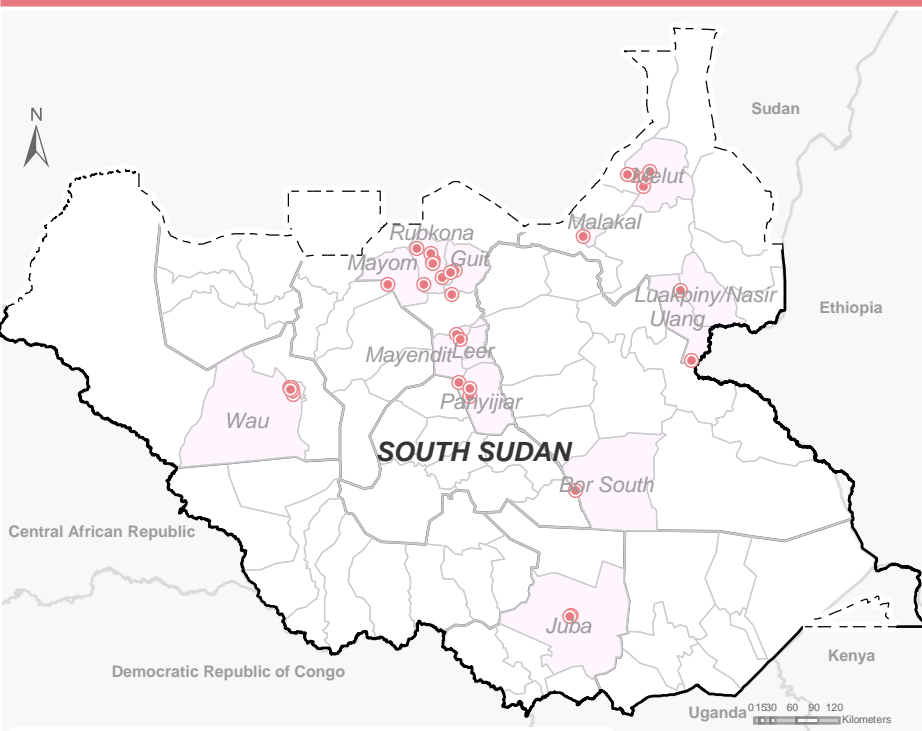







### LOCATIONS OF THE ACTIVITIES

Active in DTM BMR database	<b>859,369</b> Individuals
Targeted for Authentication	<b>418,488</b> Individuals
Authenticated	<b>386,308</b> Individuals
Newly Registered	<b>5,790</b> Individuals
Deactivation	<b>7,348</b> Individuals
Change of Checkpoint	<b>18,928</b> Individuals
Lost Card Replacement	<b>247</b> Individuals
Merging Households	<b>114</b> Individuals
De-Registration	<b>44</b> Individuals



 BMR Locations September  
 BMR County September  
 Country  
 County  
 State

Disclaimer: This map is for illustration purposes only. Names and boundaries on this map do not imply official endorsement or acceptance by IOM.

County	Number of locations	Authenticated	Newly registered	Deactivation
Bor South	1	1,885		3
Guit	4	9,322		
Juba	2	28,010	183	390
Leer	1		2,005	
Malakal	1	22,640		105
Mayendit	2	12,381		
Mayom	1			423
Melut	5	21,183		220
Nasir	1	13,257		
Panyijar	3	31,881		
Rubkona	5	169,103	5	6,117
Ulang	1		3,597	
Wau	8	76,646		90
<b>Total</b>	<b>35</b>	<b>386,308</b>	<b>5,790</b>	<b>7,348</b>

IOM's biometric registration system has been active since 2014, with 859,369 beneficiaries active in its database to date, out of which 56 per cent (481,324 individuals) are women; and 62 per cent (532,252 individuals) are under 18 years old. Since August 2018, IOM and the World Food Programme (WFP) are collaborating on the project "Enhancing targeted food distribution through biometric data management" seeking to contribute to increased food security throughout South Sudan. Under this collaboration, IOM is responsible for checking the eligibility of households receiving assistance through fingerprint authentication at selected distribution sites. Those beneficiaries whose households do not retrieve their food assistance in three consecutive distributions are assumed to no longer be present in the location and subsequently become deactivated. As a result, fluctuations in registered beneficiary numbers can be observed on an ongoing basis. **Biometric registration, complemented through regular authentication, enhances beneficiary targeting, avoiding duplications through fingerprint scanning and ensuring that the assistance reaches the intended beneficiaries.**

Biometric maintenance work is supported by a variety of donors, including DFID, ECHO, SDC and USAID alongside funds received from WFP.

## DEFINITIONS

<b>Active in DTM BMR database</b>	Number of individuals registered and verified in the BMR database
<b>Authenticated</b>	Number of beneficiaries reached through WFP GFD authentication
<b>Newly Registered</b>	Number of individuals who were newly registered, i.e. new entries into the system
<b>Deactivation</b>	Number of beneficiaries who missed 3 consecutive food distributions and have been deactivated from the database system
<b>Change of Checkpoint</b>	Number of individuals for whom the checkpoint (registration location) was changed, e.g. from Bentiu PoC to Nhialdu
<b>Lost Card Replacement</b>	Number of individuals who were assisted by replacing lost cards
<b>Merging Households</b>	Number of beneficiaries who wish to be joined with another family, i.e. merged into one household with a single beneficiary card
<b>De-Registration</b>	As a result of a relocation/facilitated returns or other movement out of the site.