

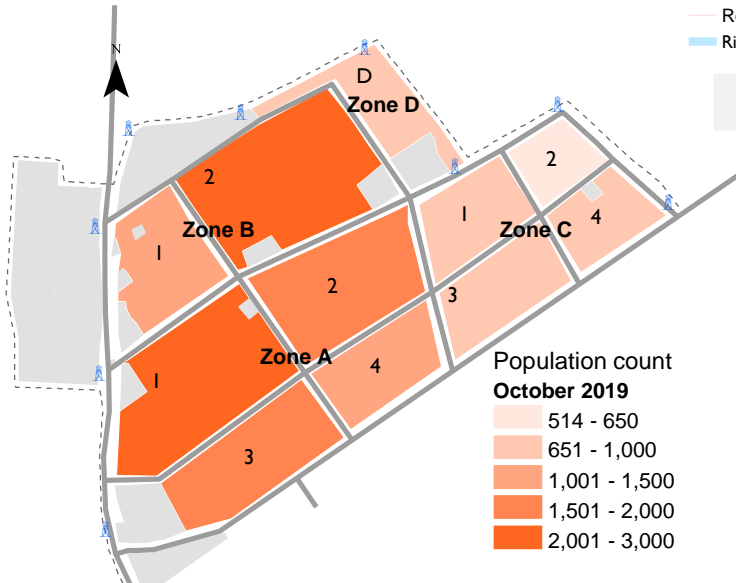
Wau Town features one Protection of Civilians (PoC) site and five collective centres in which IOM DTM conducts monthly population counts to monitor changing population dynamics and displacement trends.

In October 2019, the monthly count was conducted at Cathedral, Nazareth, St. Joseph, Lokoloko and Masna collective centres where a total of 12,316 individuals were identified. The population of **Wau PoC AA site** decreased slightly from 14,706 individuals in September to **14,696 individuals in October 2019**. Please note that the August population figure for Wau PoC AA site was derived from a biometric registration which was conducted that month and served as the best possible indication of the population at that point in time. Since biometric registrations or verifications are not feasible on a monthly basis, population counts remain the best possible tool during any other month. Population counts consist of DTM teams visiting each shelter of the site asking how many persons have slept there the previous night (sex and age disaggregated). This provides a snapshot of the population at the time of the count.

Population by zone and block, Wau PoC AA (October 2019)

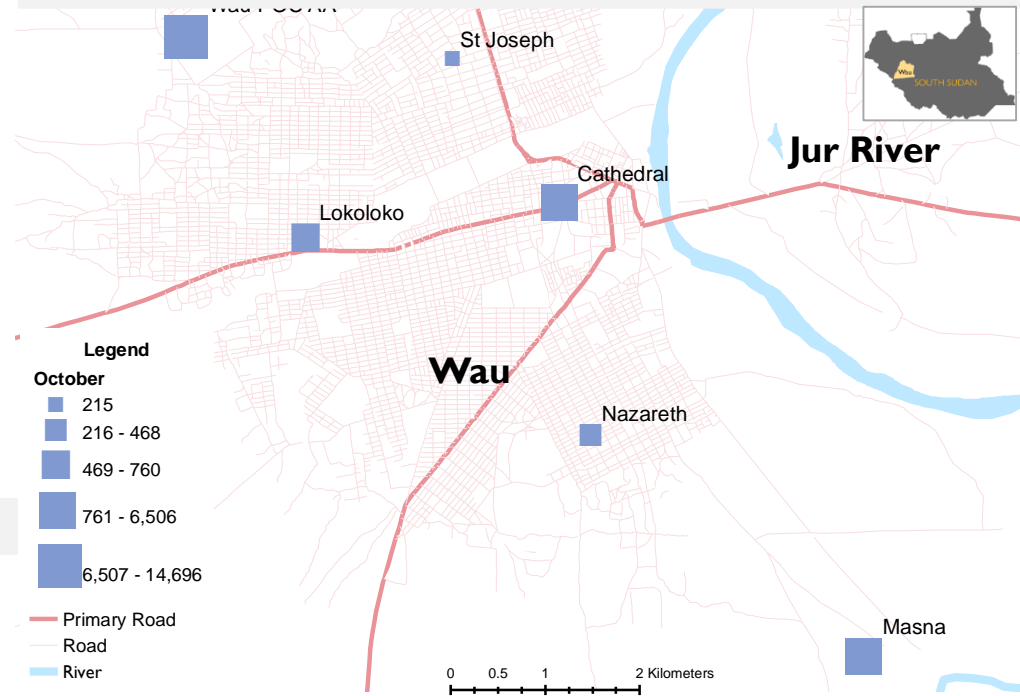
Wau PoC AA October 2019: **14,696** individuals

47% Zone A **29%** Zone B **19%** Zone C **5%** Zone D

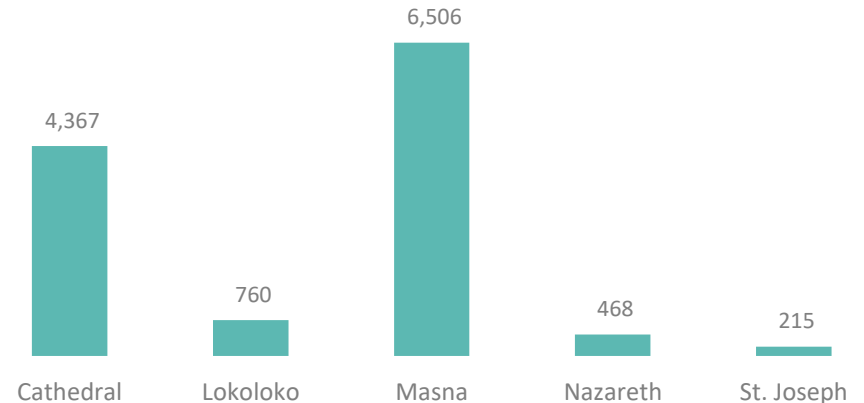


- Average household size: 4 individuals;
- Zone D houses 5% of the site population and remains the zone with the highest average household size: 9 individuals;
- Zone A (4 blocks) houses 47% of the population with an average household size of 3 individuals;
- Zone B Block 2 is the most populated block making up 20% of the site's population followed by Zone A Block 1 (18%);

Wau PoC AA and collective centres by population size (October 2019)



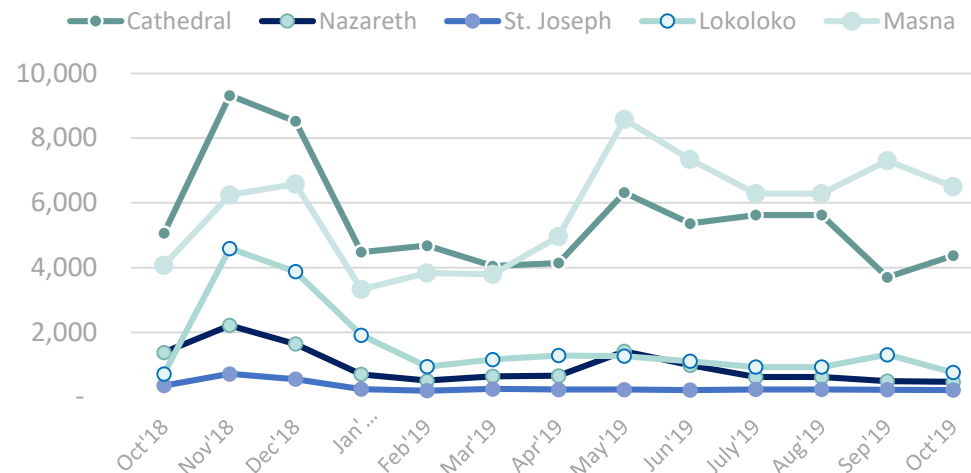
Population in Collective Centres (October 2019)



Population change in collective centres since previous month (October 2019)

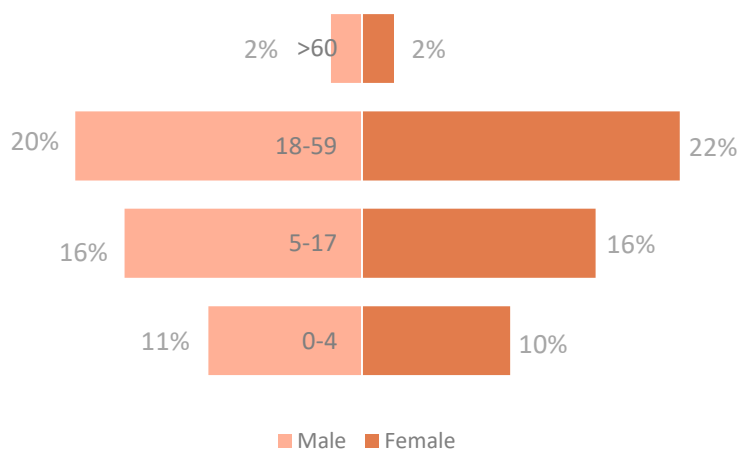
Collective Centres	Sep 2019 Number of individuals	Oct 2019 Number of individuals	Difference Number of individuals	Population change
Cathedral	3,703	4,367	664	↑ Increase
Lokoloko	1,309	760	(549)	↓ Decrease
Masna	7,302	6,506	(796)	↓ Decrease
Nazareth	494	468	(26)	↓ Decrease
St. Joseph	226	215	(11)	↓ Decrease

Monthly trend in Wau collective centres, October 2018 – October 2019



Wau PoC AA by age and sex (October 2019): 14,696 individuals (51 % female)

- Zone B Block 2 is home to a third of all males (33%) and a quarter of the females (26%) over 60 years;
- The largest percentage of children between 0 and 4 years old are living in Zone B Block 2 (37% of the block's population) and Zone A Block 1 (36%).



Wau collective centres by age and sex (October 2019): 12,316 individuals (54% female)

