

Wau Town features one Protection of Civilians (PoC) site and five collective centres in which IOM DTM conducts monthly population counts to monitor changing population dynamics and displacement trends.

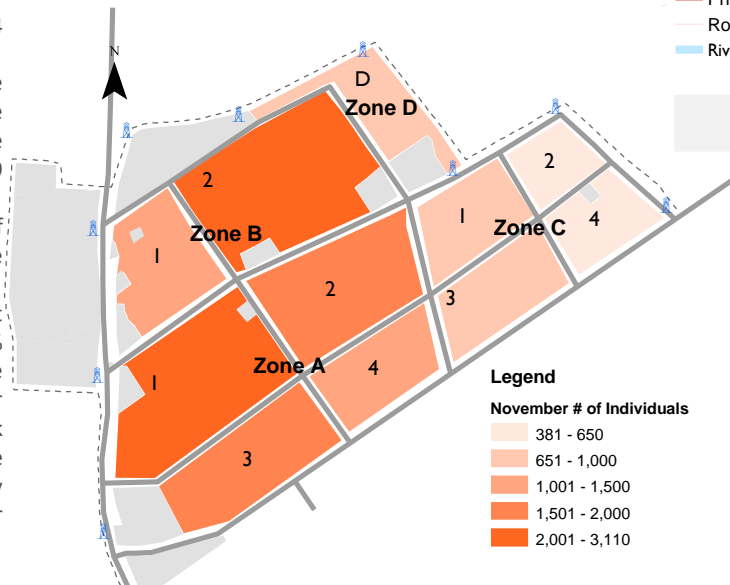
In November 2019, the monthly count was conducted at Cathedral, Nazareth, St. Joseph, Lokoloko and Masna collective centres where a total of 11,291 individuals were identified. The population of Wau PoC AA site decreased from 14,696 individuals in October to 14,195 individuals in November 2019. Please note that the August population figure for Wau PoC AA was derived from a biometric registration which was conducted that month and served as the best possible indication of the population at that point in time. Since biometric registrations or verifications are not feasible on a monthly basis, population counts remain the best possible tool during any other month. Population counts consist of DTM teams visiting each shelter of the site asking how many persons have slept there the previous night (sex and age disaggregated). This provides a snapshot of the population at the time of the count.

### Population by zone and block, Wau PoC AA (November 2019)

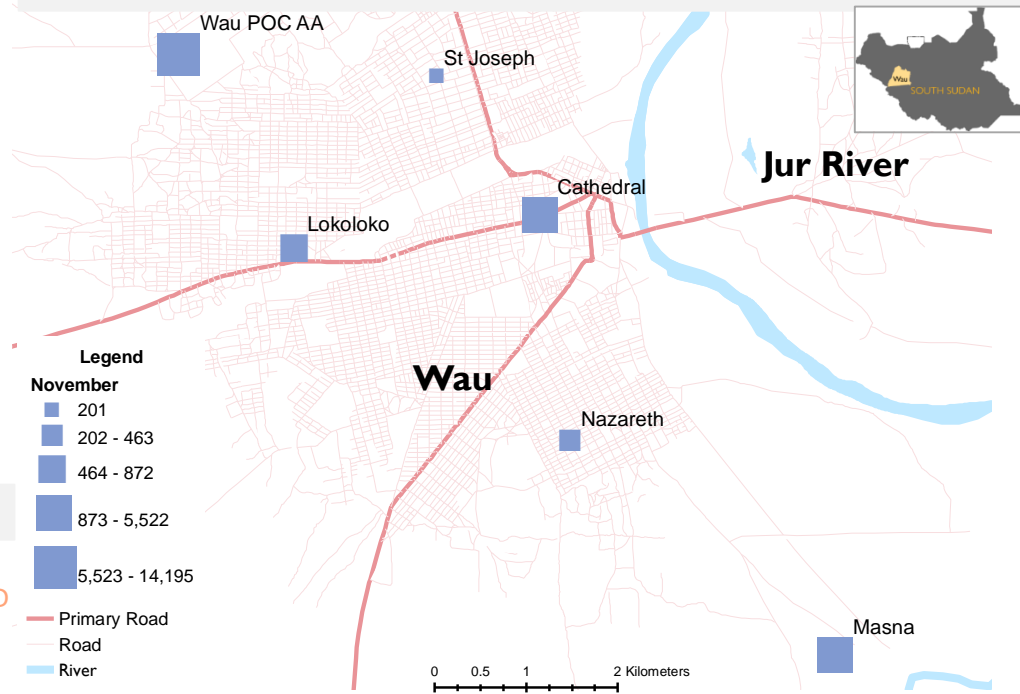
Wau PoC AA November 2019: **14,195** individuals

**46%** Zone A    **29%** Zone B    **17%** Zone C    **5%** Zone D

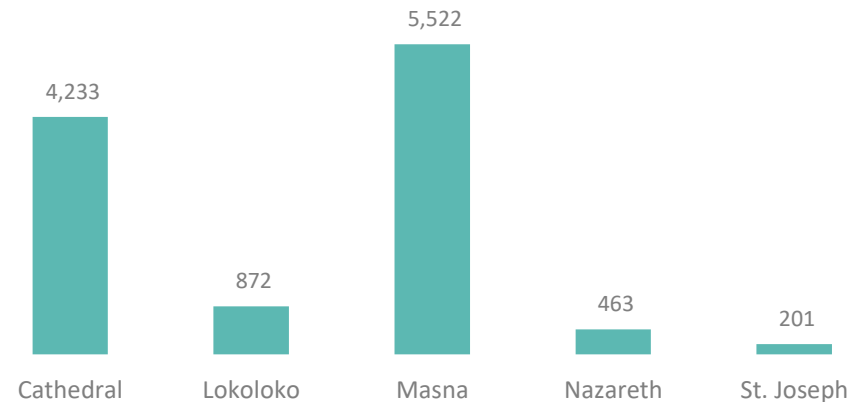
- Average household size: 4 individuals;
- Zone D houses 5% of the site population and remains the zone with the highest average household size: 8 individuals (9 in October 2019);
- Zone A (4 blocks) houses 47% of the population with an average household size of 3 individuals;
- Zone B Block 2 is the most populated block making up 22% of the site's population (increase by 121 individuals since October 2019) followed by Zone A Block 1 which constitutes 16% of the site's population (decrease by 340 individuals since October 2019);



### Wau PoC AA and collective Centres by population size (November 2019)



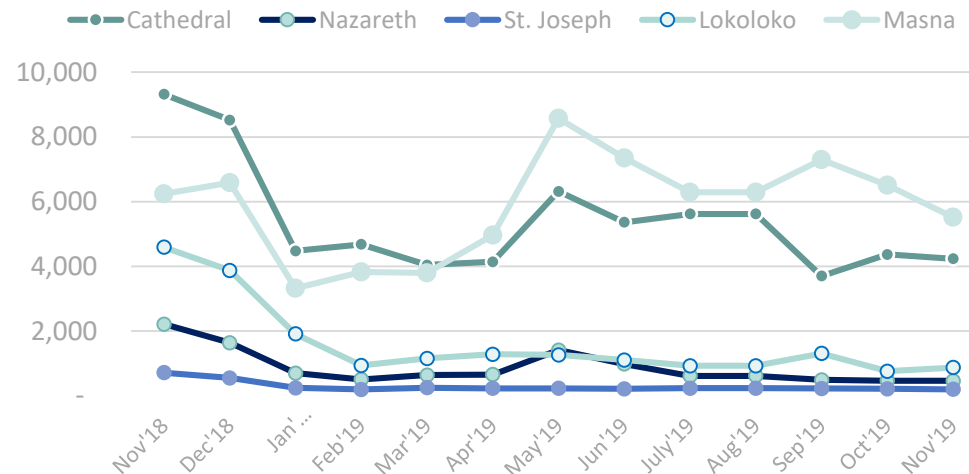
### Population in Collective Centres (November 2019)



### Population change in Collective Centres since previous month (November 2019)

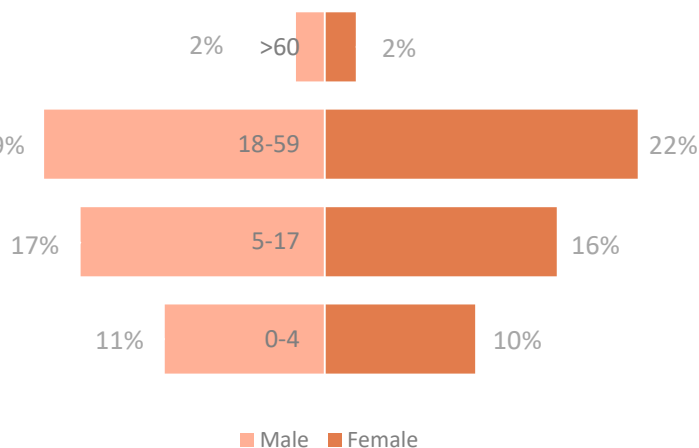
Collective Centres	Oct 2019 Number of individuals	Nov 2019 Number of individuals	Difference Number of individuals	Population change
Cathedral	4,367	4,233	(134)	↓ Decrease
Lokoloko	760	872	112	↑ Increase
Masna	6,506	5,522	(984)	↓ Decrease
Nazareth	468	463	(5)	↓ Decrease
St. Joseph	215	201	(14)	↓ Decrease

### Monthly trend in Wau collective centres, November 2018 – November 2019



### Wau PoCAA by age and sex, (November 2019): 14,195 individuals (50% female)

- Zone B Block 2 is home to 23% all males and 22% of all females over 60 years;
- The largest percentage of children between 0 and 4 years old are living in Zone B Block 2 (40% of the block's population) and Zone A Block 1 (31%).



### Wau Collective Centres by age and sex, November 2019: 11,291 individuals (51% female)

