

Key Findings*



Survey piloted in districts Peshawar & Haripur



33% Afghans came from Jalalabad, 14% from Kunduz and 12% from Nangarhar.



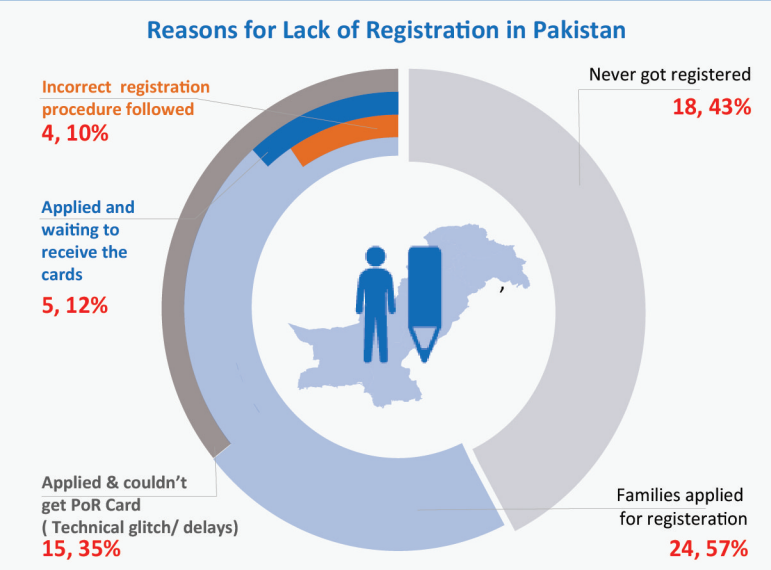
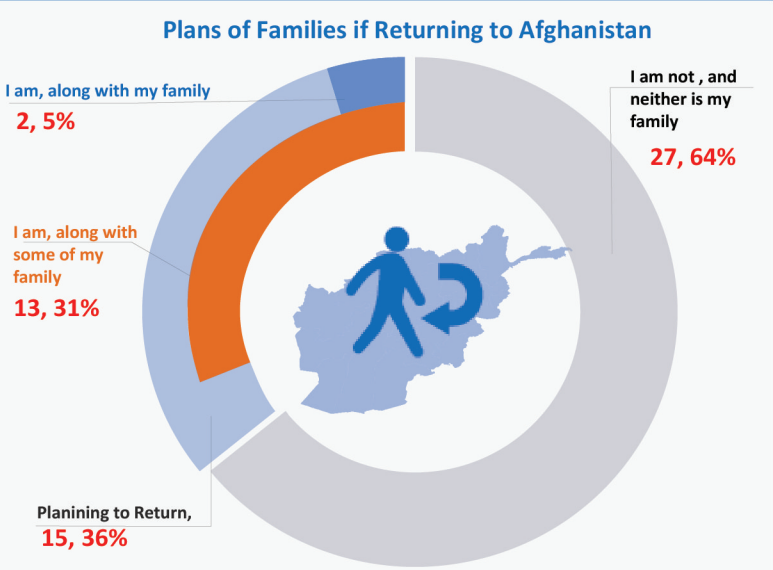
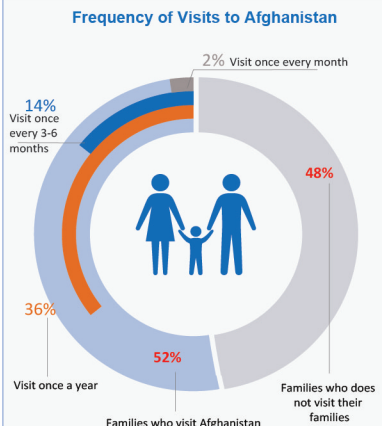
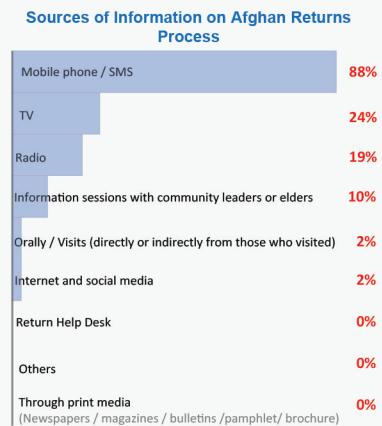
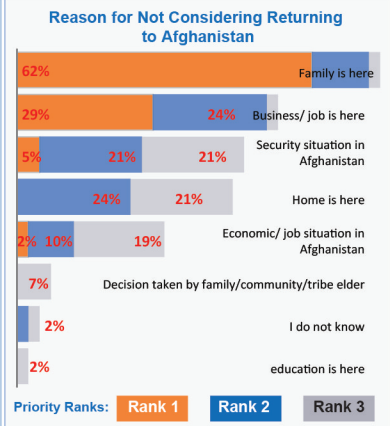
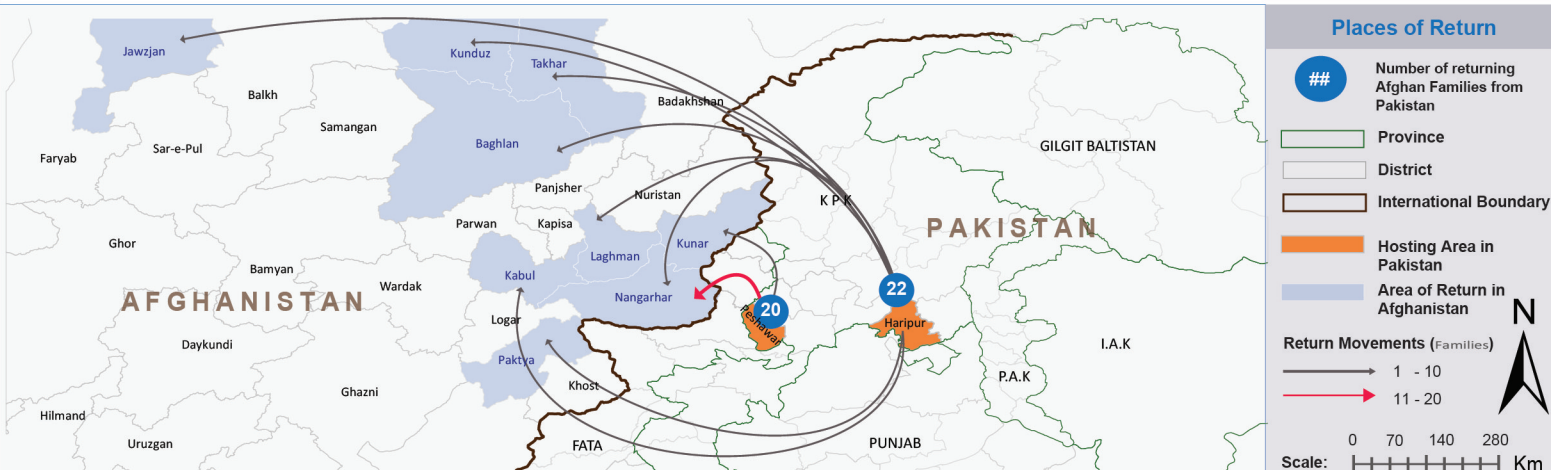
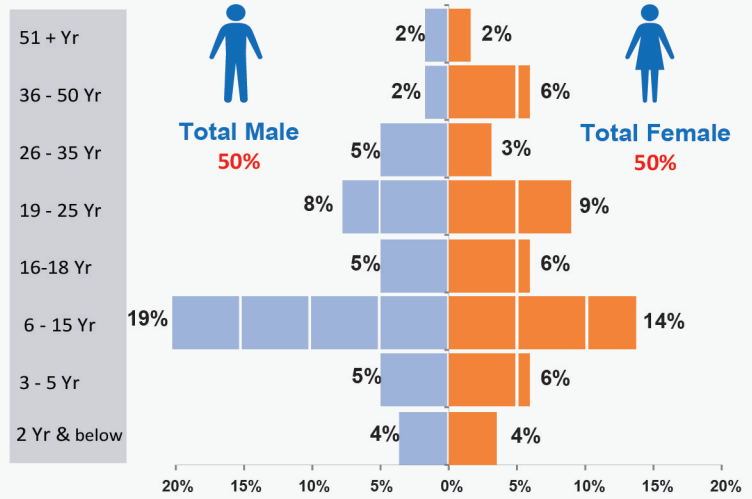
60% of Afghans came to Pakistan between year 1980 - 2000



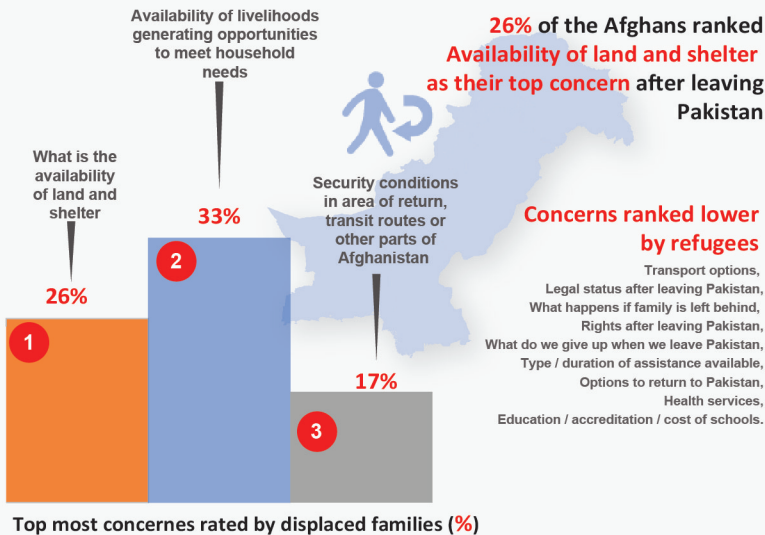
64% Afghans tried to get registered in Pakistan but were unable to do so for various reasons

* Sample size comprises of 42 Households and 4 Focus Group Discussions (FGDs)

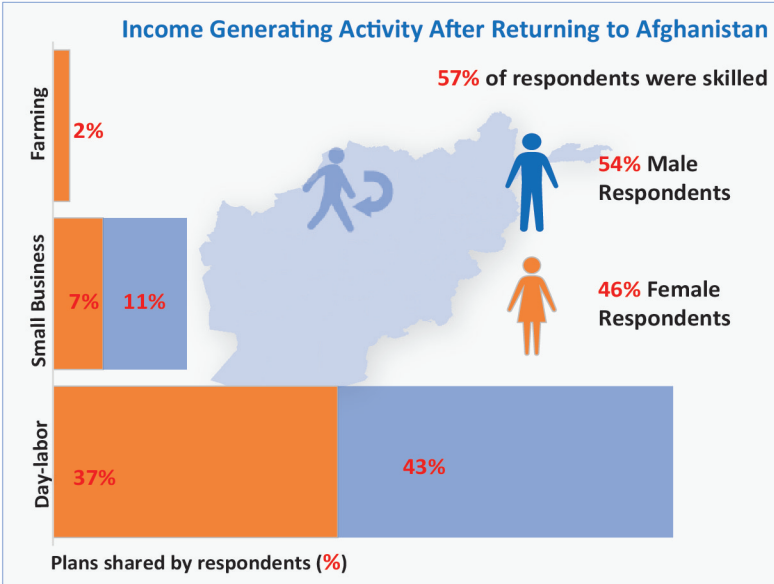
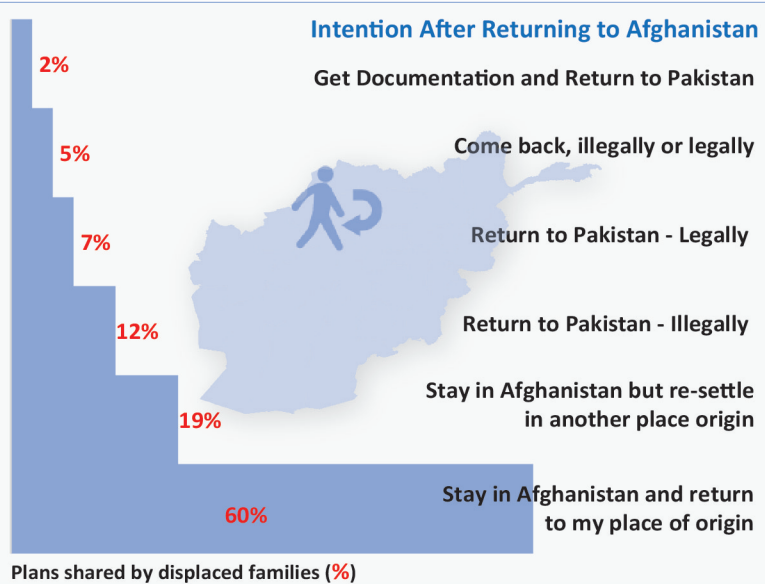
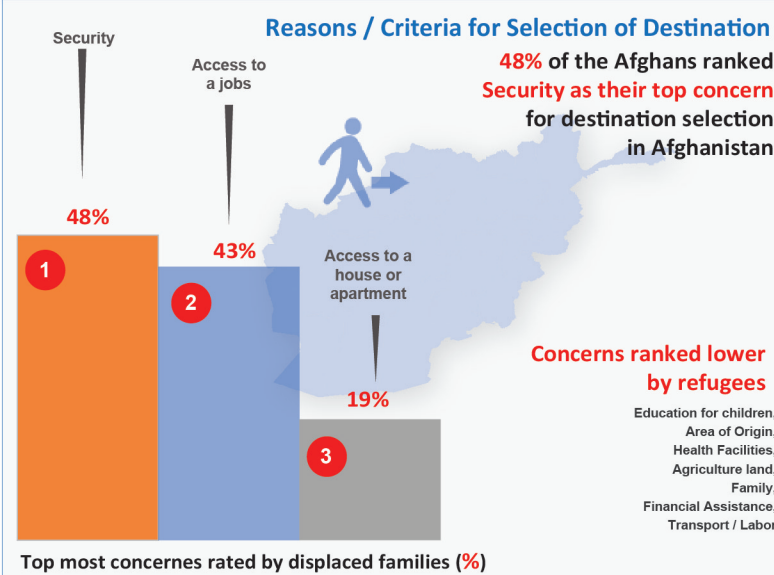
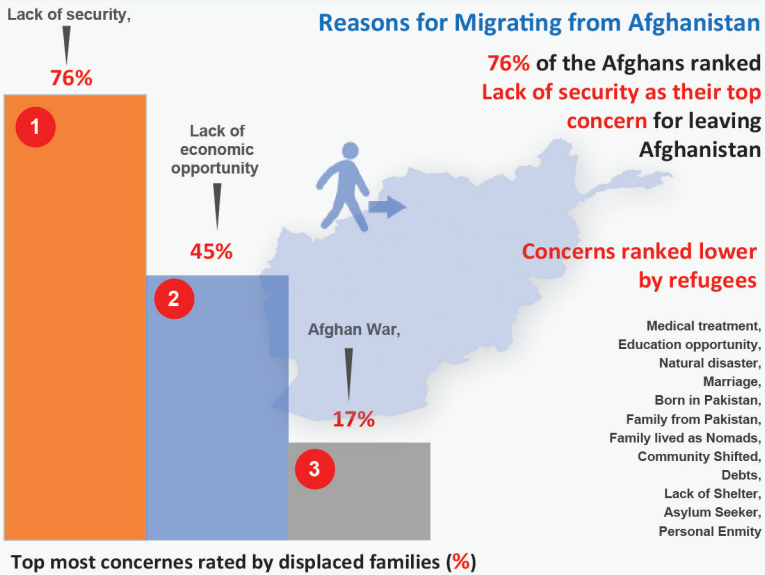
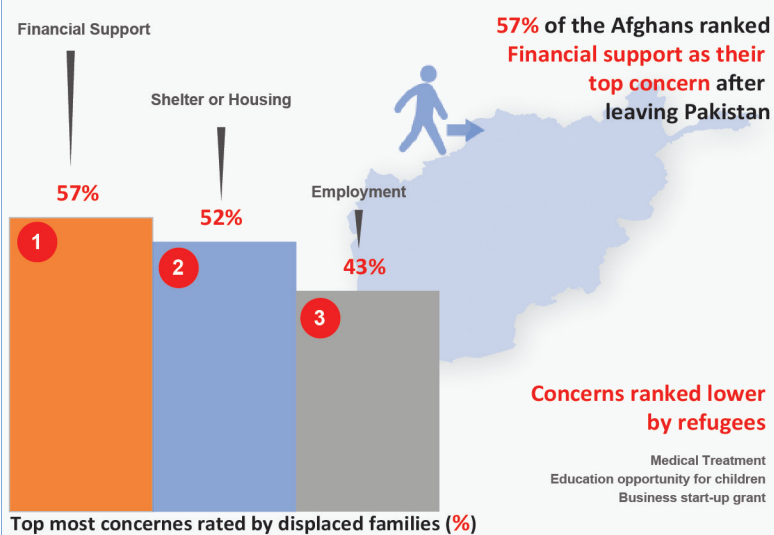
Age-Gender Disaggregation (Individuals)



Concerns about Repatriation



Top Needs After Returning to Afghanistan



Next Steps:

- Purpose of the survey is to strengthen the evidence base on profiles, vulnerabilities, critical needs and return trends of undocumented Afghans residing in Pakistan.
- Returns intentions Survey will be carried out in 10 districts of KPK - Peshawar, Haripur, Swabi, Nowshera, Kohat, Hangu, Mardan, Mansehra, Charsadda, Upper & Lower Dir.
- 800 Undocumented Afghan households to be surveyed, up to 3 Focus Group Discussions on average to be carried out per district.
- As funding becomes available, the possibility of expansion into other provinces/districts of Pakistan will also be considered.