



EMERGENCY TRACKING TOOL (ETT)

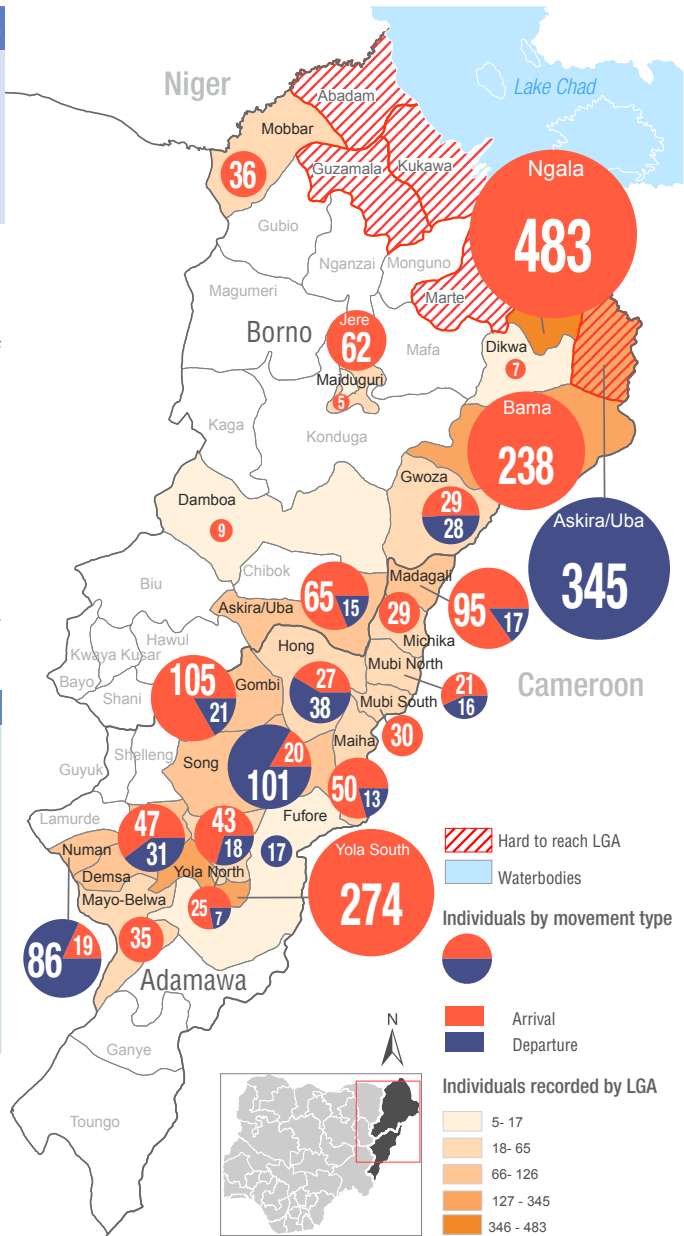
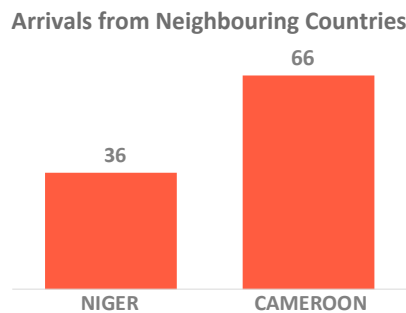
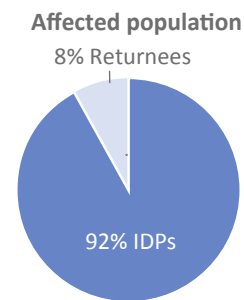
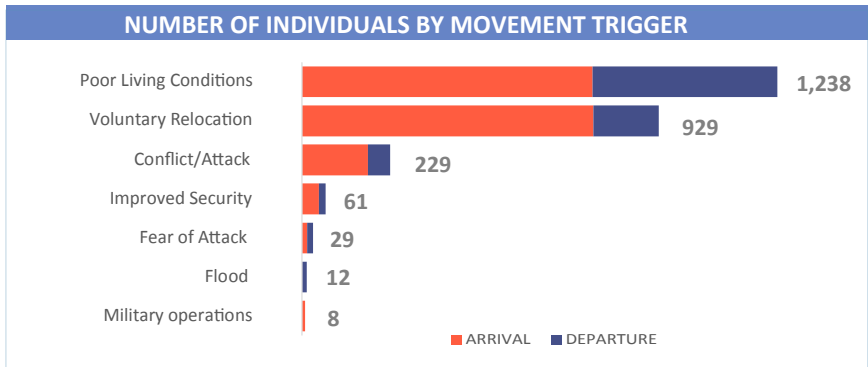
DTM Emergency Tracking Tool (ETT) is deployed to track and provide up-to-date information on sudden displacement and other population movements

ETT Report: No. 145 | 11 - 17 November 2019

MOVEMENTS	NEW ARRIVAL SCREENING BY NUTRITION PARTNERS
<p>Arrivals: 1,753 individuals</p> <p>Departures: 753 individuals</p>	<p>223 Children (6-59 months) screened for malnutrition</p> <p>MUAC category of screened children</p> <p>Green: 198 Yellow: 18 Red: 7</p>

During the period of 11 – 17 November 2019, a total of 2,506 movements were recorded, which were composed of 1,753 arrivals and 753 departures. Arrivals were recorded at locations in Maiduguri Metropolitan Council, Askira/Uba, Bama, Damboa, Dikwa, Gwoza, Jere, Mobbar and Ngala Local Government Areas (LGAs) of Borno State. Arrivals were also recorded in Demsa, Girei, Gombi, Hong, Madagali, Maiha, Mayo-Belwa, Michika, Mubi North, Mubi South, Numan, Song, Yola North and Yola South LGAs of Adamawa State. Departures were recorded in Askira/Uba, Gwoza and Kala/Balge LGAs of Borno State. Departures were also recorded in Demsa, Fufore, Girei, Gombi, Hong, Madagali, Maiha, Mubi North, Numan, Song and Yola North LGAs of Adamawa State.

ETT assessments identified the following movement triggers: poor living conditions (49%), voluntary relocation (37%), conflict/attack (9%), improved security (2%), fear of attack (1%), flood (1%) and military operations (1%).



* Movements in Kala/Balge were captured by ETT outreach staff in the LGA

SUMMARY OF MAJOR MOVEMENTS

Ngala: 483 arrivals were recorded in Ngala LGA of Borno State. The arrivals include 431 from Rann “A” ward of Kala/Balge LGA, 39 from Fotokol and 13 from Kousseri of Cameroon. The arrivals were all due to poor living conditions.

Kala/Balge: 345 departures were recorded in Kala/Balge LGA of Borno State. The 345 departures were from Rann ward. The departures were all due to poor living conditions.

Yola South: 274 arrivals were recorded in Yola South LGA of Adamawa State. The arrivals include 20 from Bole Yolde Pate ward and were tracked at Makama “B” ward. Other arrivals include 228 from Limawa ward of Yola North LGA, 12 from Moda/Dlaka ward of Michika LGA, 8 from Girei I ward of Girei LGA and 6 from Kwarhi ward of Hong LGA. 98% of the new arrivals reported to have relocated voluntarily while 2% were due to poor living conditions.

Bama: 238 arrivals were recorded in Bama LGA of Borno State. The arrivals include 2 from Shehuri/Hausari/Mairi ward and were tracked at Buduwa/Bula Chirabe ward, 15 from Soye ward and 199 from Buduwa/Bula Chirabe ward and were tracked at Shehuri/Hausari/Mairi ward. Other arrivals include 8 from Pulka/Bokko ward of Gwoza LGA, 10 from Mora, 3 from Moroua and 1 from Mokolo of Cameroon. 94% of the new arrivals reported to have relocated voluntarily while 6% were due to poor living conditions.

NEW ARRIVAL MALNUTRITION SCREENING SUMMARY (CHILDREN 6-59 MONTHS)

An exhaustive nutrition screening using monitoring of symptoms of acute malnutrition mid upper arm circumference (MUAC) and Oedema was conducted by Nutrition Sector partners for 223 children of 6-59 months. Of the 223 children screened, the MUAC reading recorded 7 children (from accessible area) in the Red category, 18 in the Yellow category and 198 measured in the Green category. No case of Oedema was reported in the 4 LGAs that reports were received from.

The results also include 34 children from neighbouring Cameroon and Republic of Niger (2 children moved to Bama, 9 to Mobbar and 23 moved to Ngala); Out of all the 34 children measured, none was in the red category, 29 were in the green category and 5 in the yellow category. All children found with acute malnutrition have been admitted for treatment.

LGA	MUAC Categories						Total
	Green (≥12.5cm)		Yellow (11.5 cm - 12.5cm)		Red (<11.5cm)		
	Inaccessible	Accessible	Inaccessible	Accessible	Inaccessible	Accessible	
Bama	2	53	0	0	0	2	57
Gwoza	2	7	0	0	0	0	9
Mafa	29	0	3	0	0	0	32
Mobbar	0	7	0	2	0	0	9
Ngala	0	98	0	13	0	5	116
Total	33	165	3	15	0	7	223

■ Nourished
 ■ Moderate Acute Malnutrition (MAM)
 ■ Severe Acute Malnutrition (SAM)

Please note, the data presented are not surveillance results and should be interpreted with caution.

Table 1. Details of movements by locations of assessment and locations of arrival / departure - only movements with at least 36 persons are listed below

Tracking Location			Movement Location					
STATE	LGA	WARD	STATE2	LGA2	WARD2	ARRIVAL	DEPARTURE	Grand Total
ADAMAWA	DEMSEA	BORRONG	ADAMAWA	DEMSEA	DONG	20	-	20
		DEMSEA			NASSARAWO	18	-	18
	FUFORE	FUFORE	ADAMAWA	GOMBI	GOMBI NORTH	-	17	17
	GIREI	GIREI II	ADAMAWA	FUFORE	PARIYA	20	-	20
		WURO DOLE			GURIN	-	18	18
					PARIYA	23	-	23
	GOMBI	GOMBI NORTH	ADAMAWA	SONG	ZUMO	30	-	30
		GOMBI SOUTH			MICHIKA	-	21	21
		GUYAKU			MICHIKA I	-	21	21
	MADAGALI	DUHU/SHUWA	ADAMAWA	MADAGALI	GULAK	-	17	17
		GULAK			K/WURO NGAYANDI	24	-	24
		K/WURO NGAYANDI			K/WURO NGAYANDI	71	-	71
	MAIHA	MANJEKIN	ADAMAWA	SONG	ZUMO	24	-	24
		SORAU 'A'	BORNO	GWOZA	GWOZA WAKANE	16	-	16
	MAYO-BELWA	MAYO-BELWA	ADAMAWA	MAYO-BELWA	MAYO FARANG	21	-	21
	MICHIKA	FUTUDOU / FUTULES	ADAMAWA	SONG	SONG WAJE	18	-	18
	MUBI SOUTH	LAMURDE	BORNO	ASKIRA / UBA	KOPA / MULTHAFU	17	-	17
	NUMAN	GAMADIO	ADAMAWA	DEMSEA	KPASHAM	19	-	19
		IMBURU		NUMAN	BARE	-	62	62
		NUMAN II		LAMURDE	NGBAKOWO	-	24	24
SONG	ZUMO	ADAMAWA	MAYO-BELWA	GENGLE	20	-	20	
			GOMBI	GOMBI NORTH	-	28	28	
				GOMBI SOUTH	-	57	57	
			MUBI NORTH	LOKUWA	-	16	16	
YOLA SOUTH	LIMAWA	ADAMAWA	YOLA NORTH	LIMAWA	228	-	228	
	MAKAMA 'B'		YOLA SOUTH	BOLE YOLDE PATE	20	-	20	
BORNO	ASKIRA / UBA	HAUSARI/ZADAWA	BORNO	DAMBOA	GUMSURI/ MISAKIRBUTU	32	-	32
	BAMA	SHEHURI / HAUSARI / MAIRI	BORNO	BAMA	BUDUWA / BULA CHIRABE	199	-	199
	GWOZA	PULKA/BOKKO	BORNO	BAMA	SHEHURI / HAUSARI / MAIRI	-	28	28
	JERE	OLD MAIDUGURI	BORNO	MARTE	KIRENUWA	62	-	62
	KALA/BALGE	RANN	BORNO	NGALA	NGALA	-	345	345
	MOBBAR	DAMASAK	NIGER REPUBLIC	DIFFA	CHEITMARI	29	-	29
	NGALA	NGALA WARD	BORNO	KALA/BALGE	RANN "A"	431	-	431
CAMEROON			LOGONE-ET-CHARI	FOTOKOL	39	-	39	

The depiction and use of boundaries, geographic names, and related data shown on maps and included in this report are not warranted to be error free nor do they imply judgment on the legal status of any territory, or any endorsement or acceptance of such boundaries by IOM. MUAC data is provided by UNICEF

For more information or to report an alert, please contact:

Henry Kwenin, DTM Project Coordinator: hkwenin@iom.int | +234 903 8852 524

Dave Bercasio, Emergency Coordinator: dbercasio@iom.int | +234 907 5070 001

DTM information products: <http://nigeria.iom.int/dtm>

