



EMERGENCY TRACKING TOOL (ETT)

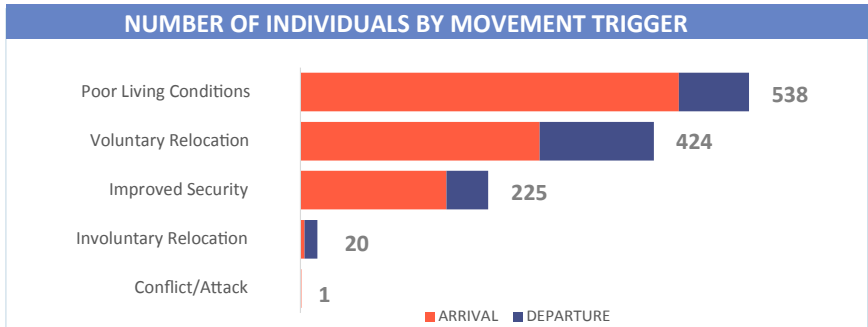
DTM Emergency Tracking Tool (ETT) is deployed to track and provide up-to-date information on sudden displacement and other population movements

ETT Report: No. 142 | 21 - 27 October 2019

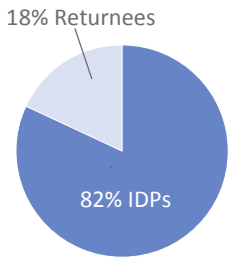
MOVEMENTS	NEW ARRIVAL SCREENING BY NUTRITION PARTNERS
<p>Arrivals: 922 individuals</p> <p>Departures: 286 individuals</p>	<p>158 Children (6-59 months) screened for malnutrition</p> <p>MUAC category of screened children</p> <p>Green: 65 Yellow: 41 Red: 52</p>

During the period of 21 – 27 October 2019, a total of 1,208 movements were recorded, which were composed of 922 arrivals and 286 departures. Arrivals were recorded at locations in Askira/Uba, Bama, Damboa, Gwoza, Kaga, Konduga, Maiduguri, Mobbar and Ngala Local Government Areas (LGAs) of Borno State. Arrivals were also recorded in Demsa, Girei, Gombi, Hong, Maiha, Mayo-Belwa, Michika, Mubi North, Mubi South, Numan, Song and Yola South LGAs of Adamawa State. Departures were recorded in Askira/Uba, Bama, Gwoza and Kala/Balge LGAs of Borno State. Departures were also recorded in Girei, Gombi, Hong, Madagali, Maiha, Mayo-Belwa, Michika, Mubi North, Mubi South, Numan and Yola South LGAs of Adamawa State.

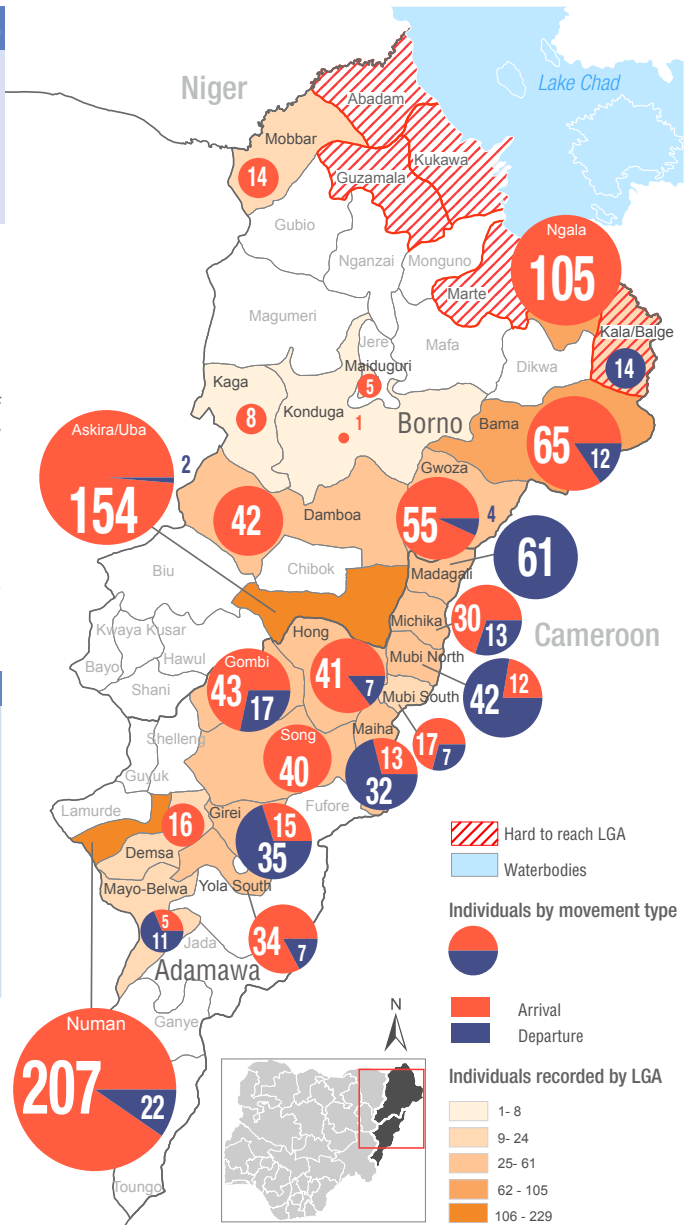
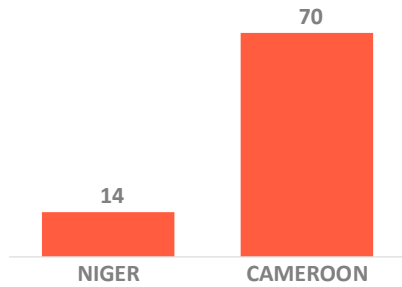
ETT assessments identified the following movement triggers: poor living conditions (44%), voluntary relocation (35%), improved security (19%), involuntary relocation (2%) and conflict/attack (0.1%).



Affected population



Arrivals from Neighbouring Countries



* Movements in Kala/Balge were captured by ETT outreach staff in the LGA

SUMMARY OF MAJOR MOVEMENTS

Numan: 207 arrivals and 22 departures were recorded in Numan LGA of Adamawa State. The arrivals include 102 from Bare ward and 105 from Gamadio ward. The 22 departures were from Imburu ward. 82% of the new arrivals reported to have relocated due to poor living condition while 18% relocated voluntarily. The departures were due to poor living conditions.

Askira/Uba: 154 arrivals and 2 departures were recorded in Askira/Uba LGA of Borno State. The arrivals include 49 from Askira East ward and were tracked at Ngohi ward and 9 from Chull/Rumirgo ward and were tracked at Mussa ward. Other arrivals include 4 from Jalingo LGA of Taraba State, 85 from Madagali and 7 from Mubi North LGAs of Adamawa State. The 2 departures were from Uba ward. 97% of the new arrivals reported to have relocated due to improved security while 3% were reportedly due to poor living conditions. The departures were all voluntary.

Ngala: 105 arrivals were recorded in Ngala LGA of Borno State. The arrivals include 57 from Rann “A” ward of Kala/Balge LGA and 48 from Kousseri of Cameroon. All the new arrivals reported to have relocated due to poor living conditions.

Bama: 65 arrivals and 12 departures were recorded in Bama LGA of Borno State. The arrivals include 5 from Buduwa/Bula Chirabe ward, 2 from Lawanti/Malam/Mastari/Abbaram ward and 31 from Soye ward and were tracked at Shehuri/Hausari/Mairi ward. Other arrivals include 13 from Maisandari ward of Maiduguri Metropolitan Council, 9 from Mora and 5 from Bogo of Cameroon. The 12 departures were from Shehuri/Hausari/Mairi ward. 60% of the new arrivals reported to have relocated due to poor living conditions, 32% relocated voluntarily while 8% relocated involuntarily. The departures were all voluntary.

NEW ARRIVAL MALNUTRITION SCREENING SUMMARY (CHILDREN 6-59 MONTHS)

An exhaustive nutrition screening using monitoring of symptoms of acute malnutrition mid upper arm circumference (MUAC) and Oedema was conducted by Nutrition Sector partners for 63 children of 6-59 months. Of the 63 children screened, the MUAC reading recorded 2 children (from an inaccessible area) in the Red category, 13 in the Yellow category and 48 measured in the Green category. No case of Oedema was reported in the 4 LGAs that reports were received from.

The results also include 30 children from neighbouring Cameroon and Republic of Niger (6 children moved to Bama, 5 to Gwoza, 5 to Mobbar and 14 moved to Ngala); Out of the 30 children measured, 1 was in the red category, 22 in the green category and 7 measured in the yellow category. All children found with acute malnutrition have been admitted for treatment.

LGA	MUAC Categories						Total
	Green ($\geq 12.5\text{cm}$)		Yellow (11.5 cm - 12.5cm)		Red (<11.5cm)		
	In-Accessible	Accessible	In-Accessible	Accessible	In-Accessible	Accessible	
Bama	31	1	23	0	22	0	77
Dikwa	3	0	3	0	15	0	21
Gwoza	18	7	15	0	13	1	54
Ngala	2	3	0	0	1	0	6
Total	54	11	41	0	51	1	158

■ Nourished

■ Moderate Acute Malnutrition (MAM)

■ Severe Acute Malnutrition (SAM)

Please note, the data presented are not surveillance results and should be interpreted with caution.

Table 1. Details of movements by locations of assessment and locations of arrival / departure - only movements with at least 11 persons are listed below

Tracking Location			Movement Location						
STATE	LGA	WARD	STATE2	LGA2	WARD2	ARRIVAL	DEPARTURE	Grand Total	
ADAMAWA	GIREI	DAMARE	ADAMAWA	GOMBI	GUYAKU	-	20	20	
		JERA BONYO		FUFORE	GURIN	15	-	15	
		WURO DOLE		FUFORE	PARIYA	-	15	15	
					MICHIKA	MADZI	13	-	13
		GOMBI SOUTH			FUFORE	RIBADU	-	17	17
		GUYAKU			GIREI	DAMARE	20	-	20
	HONG	THILBANG	ADAMAWA	MUBI NORTH	VIMTIM	13	-	13	
	MADAGALI	GULAK	ADAMAWA	MUBI SOUTH	GUDE	-	11	11	
		K/WURO NGAYANDI	BORNO	ASKIRA / UBA	KOPA / MULTHAFU	-	50	50	
	MAIHA	HUMBUTUDI	ADAMAWA	HONG	HUSERE ZUM	-	18	18	
		MAYO NGULI		MUBI NORTH	LOKUWA	13	-	13	
	MAYO-BELWA	MAYO-BELWA	ADAMAWA	MAYO-BELWA	MAYO-BELWA	-	11	11	
	MICHIKA	GARTA / GHUNCHI	ADAMAWA	GOMBI	GOMBI NORTH	-	13	13	
		MICHIKA I		MICHIKA	TUMBARA/NGABILI	17	-	17	
	MUBI NORTH	DIGIL	ADAMAWA	MUBI NORTH	BETSO	-	12	12	
		LOKUWA		MADAGALI	VIMTIM	-	14	14	
		MUCHALLA		MADAGALI	DUHU/SHUWA	-	16	16	
	MUBI SOUTH	GUDE	ADAMAWA	MADAGALI	GULAK	11	-	11	
	NUMAN	GAMADIO	ADAMAWA	NUMAN	GAMADIO	38	-	38	
		IMBURU			BARE	55	-	55	
SABON PEGI		SABON PEGI			-	22	22		
		BARE			47	-	47		
	GAMADIO		GAMADIO	67	-	67			
SONG	SONG GARI	ADAMAWA	GANYE	YEBBI	23	-	23		
			YOLA SOUTH	DAMARE	17	-	17		
BORNO	ASKIRA / UBA	KOPA / MULTHAFU	ADAMAWA	MADAGALI	K/WURO NGAYANDI	85	-	85	
		NGOHI	BORNO	ASKIRA / UBA	AKIRA EAST	49	-	49	
	BAMA	SHEHURI / HAUSARI / MAIR	BORNO	BAMA	SOYE	31	-	31	
				GWOZA	PULKA / BOKKO	-	12	12	
				MAIDUGURI M.C	MAISANDARI	13	-	13	
	DAMBOA	DAMBOA	BORNO	DAMBOA	NGUDA / WUYARAM	42	-	42	
	KALA /BALGE	RANN "A"	BORNO	NGALA	NGALA	-	14	14	
	MOBBAR	DAMASAK	NIGER REPUBLIC	DIFFA	CHETIMARI	14	-	14	
NGALA	NGALA WARD	BORNO	KALA / BALGE	RANN "A"	57	-	57		
		CAMEROON	LOGONE-ET-CHARI	KOUSSERI	48	-	48		

The depiction and use of boundaries, geographic names, and related data shown on maps and included in this report are not warranted to be error free nor do they imply judgment on the legal status of any territory, or any endorsement or acceptance of such boundaries by IOM. MUAC data is provided by UNICEF

For more information or to report an alert, please contact:

Henry Kwenin, DTM Project Coordinator: hkwenin@iom.int | +234 903 8852 524

Dave Bercasio, Emergency Coordinator: dbercasio@iom.int | +234 907 5070 001

DTM information products: <http://nigeria.iom.int/dtm>

