

Rapid Displacement Tracking (RDT)

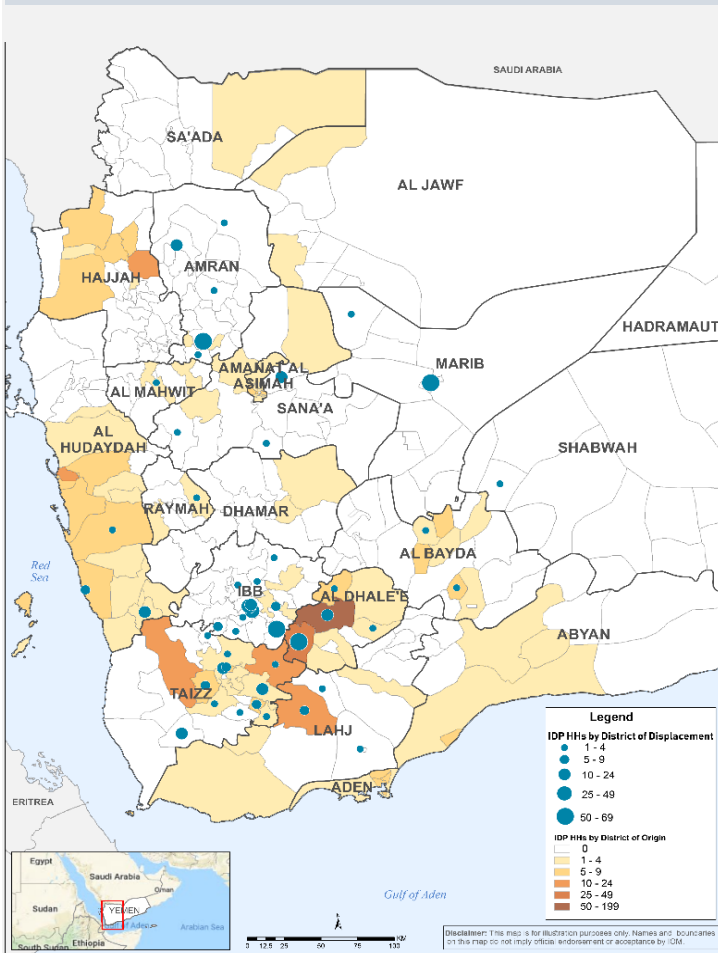
DTM-Yemen



Reporting Period : October 06 - 12, 2019

Published on: October 13, 2019

Displaced households by districts of Displacement and Origin in the last week (Oct 06 - 12)



Number of IDP Households per Governorate

Governorate	Weekly displacement update Oct 06 - 12	IDPs who left the displaced location Oct 06 - 12	Total IDP HHs 01 Jan to 12 Oct
Hajjah		5	17,907
Al Hudaydah	25		9,809
Al Dhale'e	91	72	9,402
Taizz	89	6	6,053
Amanat Al Asimah			4,503
Ibb	169		2,442
Marib	73		2,057
Sana'a	14		1,604
Amran	76		1,703
Shabwah	16		1,006
Lahj	8		920
Aden		3	525
Sa'ada			498
Abyan			599
Dhamar			429
Hadramaut	7		541
Al Bayda	6		338
Al Jawf			392
Raymah	2		223
Al Mahwit	2		163
Socotra			145
Al Maharah			110
Total	578	86	61,378

Displacement Tracking in Yemen Crises

DTM's Rapid Displacement Tracking (RDT) tool collects and reports on numbers of households forced to flee on a daily basis, allowing for regular reporting of new displacements in terms of numbers, geography and needs. In the first nine months of 2019, conflict has resulted in new patterns of displacement, particularly in within Hajjah, Al Hudaydah, and Al Dhale'e governorates.

Weekly Update

Between and 06th - 12th October, prominent displacements were seen in Ibb (169 HH), Al Dhale'e (91 HH) and Taizz (89 HH), Amran (76 HH) governorates. Most displacement resulted due to increased fighting in Al Dhale'e (236 HH), Al Hudaydah (85 HH) and Taiz (62 HH).



Displaced People

61,378 Households / 368,268 Individuals

*Reported during Jan 01 - Oct 12, 2019



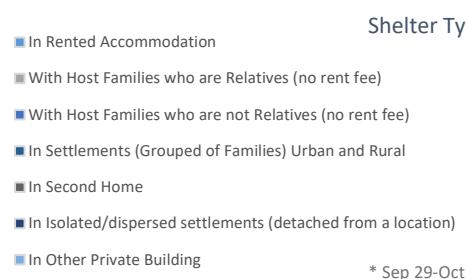
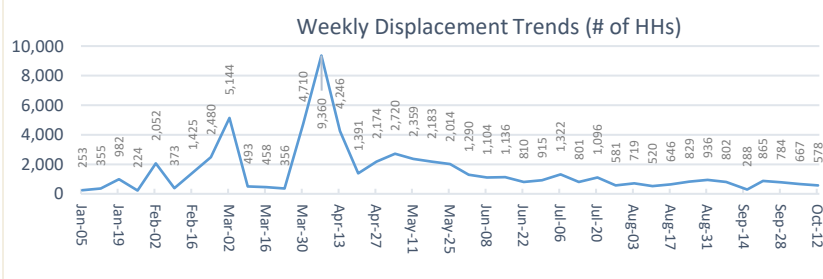
86 IDP households left the displaced location during the last week and either returned to the place of origin or displaced to some other location.



Returned People

4,389 Households / 26,334 Individuals

*Reported during Sep 01 - Oct 12, 2019



* Sep 29-Oct 12, 2019