



DTM
IOM DISPLACEMENT
TRACKING MATRIX



BURUNDI

Publication: September 2019

July 2019



Photo: Visit to an IDP family.
Kirundo Province , Bugabira commune © IOM August 2019.





109,372
Internally Displaced Persons (IDPs)

including **77%** displaced due to natural disasters
23% displaced as a result of other reasons



24,466
Displaced Households



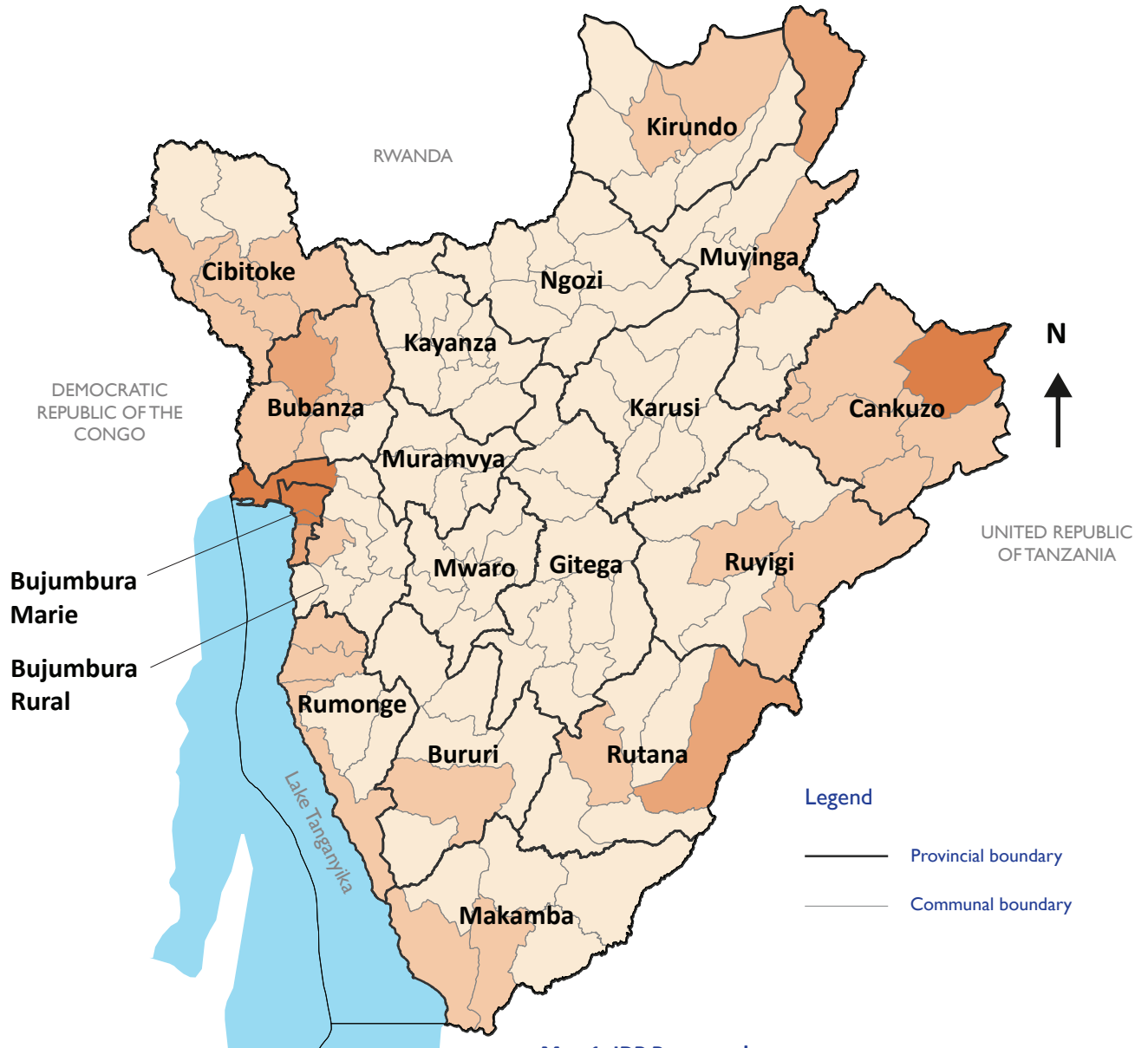
30%
of displaced children do not attend school



30%
of displaced households do not have functional latrines



54%
of displaced households live in host families



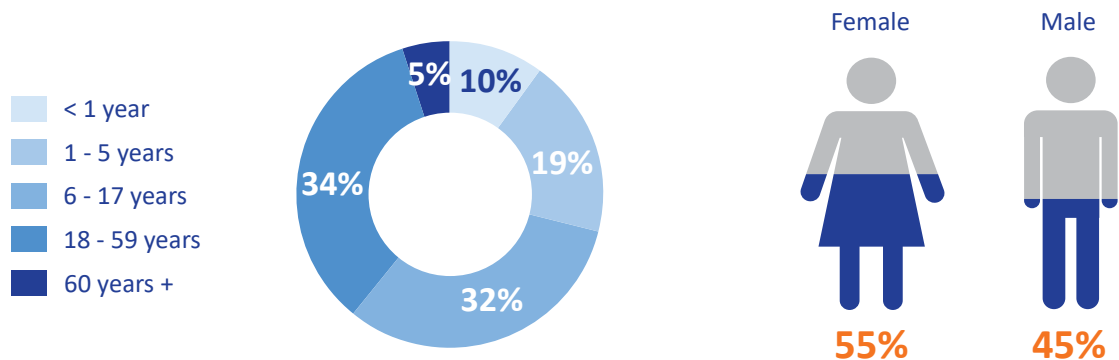
Map 1: IDP Presence by commune

Number of displaced persons

| | | | |
|-----------|---------------|---------------|----------------|
| 4 - 1,000 | 1,001 - 3,000 | 3,001 - 5,500 | 5,501 - 12,187 |
|-----------|---------------|---------------|----------------|

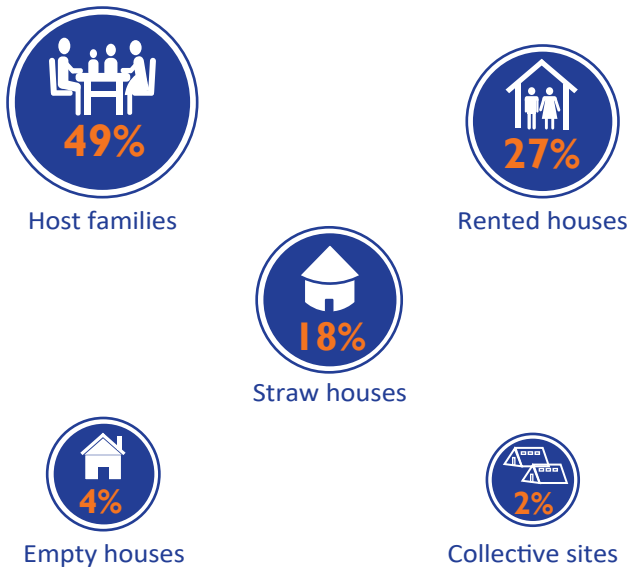
This map is for illustration purposes only. Names and boundaries on this map do not imply the official endorsement or acceptance by IOM
Source: IOM, IGEBU
© IOM Burundi - Reference Map (August 2019)

DEMOGRAPHIC OF THE IDP POPULATION



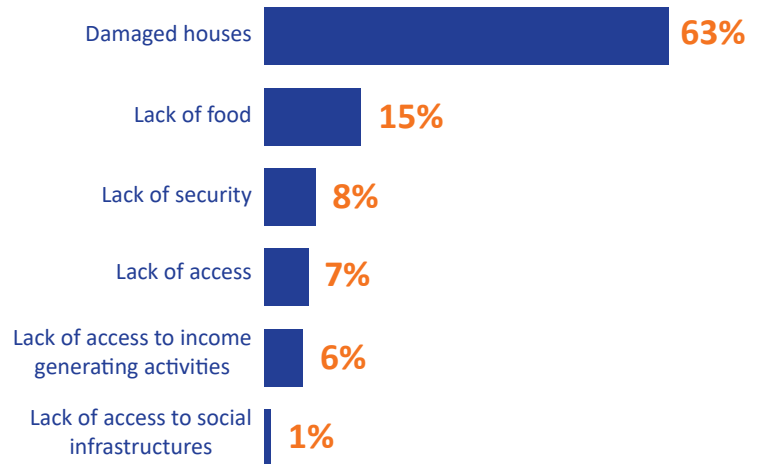
Graph 1: Demographics of the IDP population

ACCOMMODATION TYPES



Graph 2: Accommodation types by percentage of IDPs

REASONS PREVENTING RETURN









Graph 3: Percentage of displaced households by reason preventing return of IDPs

VULNERABILITIES



Graph 4: Percentage distribution of types of vulnerabilities reported by IDPs

HUMANITARIAN HIGHLIGHTS

| Province |  EDUCATION |  WASH |  NUTRITION |  HEALTH |  LIVELIHOOD |  SHELTER & NFI |
|------------------|---|--|---|---|--|---|
| | % of displaced children not attending school | % of households with functional latrines | % of households having one meal per day | % of households lacking means to pay for healthcare | % of households not having income generating activities | % of households reporting small hosting capacity as an issue with shelter |
| Bubanza | 39% | 46% | 61% | 96% | 69% | 48% |
| Bujumbura Mairie | 20% | 27% | 50% | 73% | 23% | 43% |
| Bujumbura Rural | 21% | 65% | 16% | 80% | 48% | 58% |
| Bururi | 10% | 52% | 56% | 100% | 62% | 33% |
| Cankuzo | 34% | 80% | 43% | 100% | 16% | 36% |
| Cibitoke | 30% | 60% | 70% | 98% | 72% | 40% |
| Gitega | 36% | 75% | 4% | 82% | 76% | 29% |
| Karusi | 43% | 65% | 32% | 100% | 40% | 20% |
| Kayanza | 27% | 61% | 50% | 93% | 69% | 52% |
| Kirundo | 75% | 31% | 99% | 100% | 16% | 87% |
| Makamba | 17% | 67% | 20% | 95% | 43% | 53% |
| Muramvya | 25% | 80% | 10% | 80% | 43% | 24% |
| Muyinga | 51% | 87% | 72% | 94% | 46% | 63% |
| Mwaro | 16% | 79% | 0% | 83% | 52% | 22% |
| Ngozi | 41% | 37% | 83% | 97% | 81% | 48% |
| Rumonge | 19% | 80% | 79% | 93% | 70% | 37% |
| Rutana | 19% | 70% | 19% | 92% | 62% | 35% |
| Ruyigi | 18% | 43% | 30% | 97% | 63% | 16% |

IDP PROFILES



Photo: A family of vulnerable IDPs
Bujumbura Mairie province, Ntakangwa commune © IOM August 2019

J. SIBOMANA

Displaced since: April 2018

Age: 30 years old

Displacement reason:



Displacement conditions:

The family of Mr. SIBOMANA lives in a small house built in a piece of property acquired on credit. They find it hard to eat and the children suffer from malnutrition.

Reason for no return: Repetitive drought in the province of origin.

Urgent needs:



Y. BIGIRIMANA

Displaced since: April 2015

Age: 73 years old

Displacement reason:



Displacement conditions:

Ms. BIGIRIMANA lives alone in a straw house that she is borrowing from a host family which also provides her food. Her left arm is broken.

Reason for no return: She has neither the financial means nor physical strength to build a house.

Urgent needs:



A. KAPERA

Displaced since: February 2019

Age: 47 years old

Displacement reason:



Torrential rains

Displacement conditions:

All seven family members live in vulnerable conditions in one room and the household has no source of income. The head of the household is paralyzed and can no longer work.

Reason for no return:

Lack of means to build a house.

Urgent needs:



Shelter



Small capital



Non Food Items

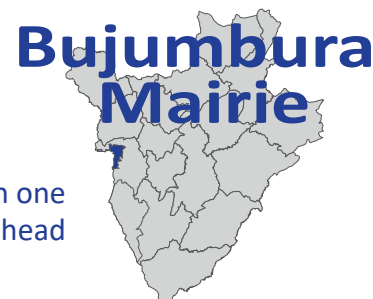




Photo: A family of vulnerable IDPs
Makamba province, Mabanda commune © IOM August 2019

J. NIRAGIRA

Displaced since: September 2016

Age: 41 years old

Displacement reason:



Displacement conditions:

Ms. NIRAGIRA lives with her six children in a house lent to her by a benefactor. The family has trouble getting food when they are not able to find work.

Reason for no return: Lack of financial means to build a house.

Urgent needs:



P. KANEZA

Displaced since: April 2017

Age: 28 years old

Displacement reason:



Torrential rains

Displacement conditions: Ms. KANEZA lives with her husband and children in a hut near their host family. This family faces serious weather protection issues during the rainy season. As her husband lives with a physical disability, she works alone to provide for the family.

Reason for no return: Lack of financial means to build a house.

Urgent needs:



Z. NDUWIMANA

Displaced since: August 2018

Age: 38 years old

Displacement reason:



Drought

Displacement conditions: The seven members of this family live in a makeshift home. Sometimes they do not find work and it is difficult to have one meal a day. The children from this family have dropped out of school due to lack of school materials.

Reason for no return: Ms. NDUWIMANA is hoping to take advantage of the economic opportunities offered by this region and integrate his family.

Urgent needs:



Non Food Items



School materials



DTM METHODOLOGY

The IOM Displacement Tracking Matrix is a comprehensive system to analyze and disseminate information to better understand the movements and needs of Internally Displaced Persons (IDPs) in Burundi. Volunteers from the Burundian Red Cross (BRC) consult with key informants to identify displacement trends and needs in their communities. Key informants can be community leaders, local government authorities and religious leaders.

Enumerators complete two types of assessments:

The commune level assessment provides information on displacement trends in all communes in Burundi (119 communes). This assessment provides information on displacement periods, provinces of origin and new displacements phenomena.

The colline level assessment provides information regarding humanitarian needs in the top five displacement areas (collines*) hosting the highest numbers of displaced persons per commune.** This assessment provides information on demographics, vulnerabilities and sectoral needs.

The household level assessment provides information regarding humanitarian needs in 2 newly displaced households in surveyed collines.***

Data presented in this report were collected from July 8 to 25, 2019.

*Collines are the smallest administrative entities in Burundi.

** While colline assessments are conducted in the 5 collines hosting the highest numbers of displaced persons in each commune. 13 communes in the provinces of Bujumbura Rural, Gitega, Karusi, Muyinga, Mwaro and Rumonge have 30 collines that do not host IDPs. Assessments from 565 collines are used in the analysis of this report.

*** 14 communes in the provinces of Bujumbura Rural, Gitega, Karusi, Muyinga, Mwaro and Rumonge have 30 collines that do not host IDPs and 1 colline in the Ngozi province host only 1 displaced household. Assessments from 1,129 households are used in the analysis of this report.

All DTM Burundi reports and information products are available on
<https://displacement.iom.int/burundi/>

