



EMERGENCY TRACKING TOOL (ETT)

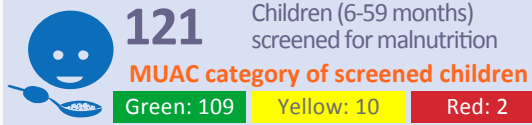
DTM Emergency Tracking Tool (ETT) is deployed to track and provide up-to-date information on sudden displacement and other population movements

ETT Report: No. 135 | 2 - 8 September 2019

Movements



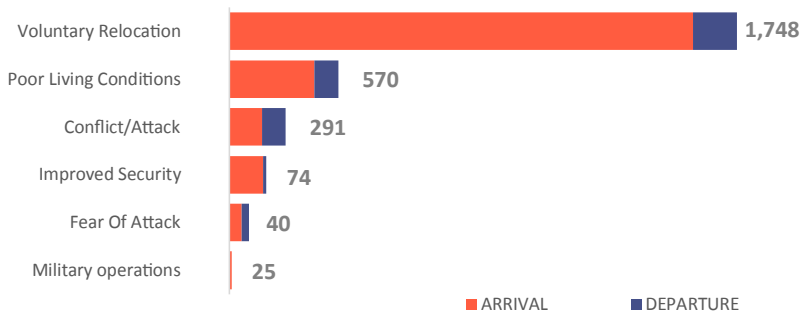
New Arrival Screening by Nutrition Partners



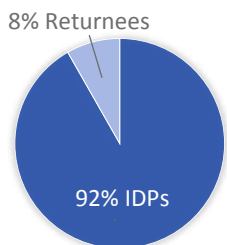
From the period 2 – 8 September 2019, a total of 2,521 movements were recorded, composed of 2,170 arrivals and 351 departures. Arrivals were recorded at locations in Askira/Uba, Bama, Biu, Dikwa, Gubio, Gwoza, Jere, Konduga, Maiduguri, Mobbar, Monguno and Ngala Local Government Areas (LGAs) of Borno state, and locations in Demsa, Fufore, Gombi, Hong, Maiha, Michika, Mubi North, Mubi South, Numan, Song, Yola North and Yola South LGAs of Adamawa state. Departures were recorded in Askira/Uba, Gwoza and Kala/Balge LGAs of Borno state, locations in Fufore, Girei, Gombi, Hong, Madagali, Maiha, Michika, Mubi North, Numan, and Yola South LGAs of Adamawa state.

ETT assessments identified the following movement triggers: voluntary relocation (69%), poor living conditions (15%), conflict/attack (8%), improved security (5%), fear of attack (3%) and military operations (0.4%).

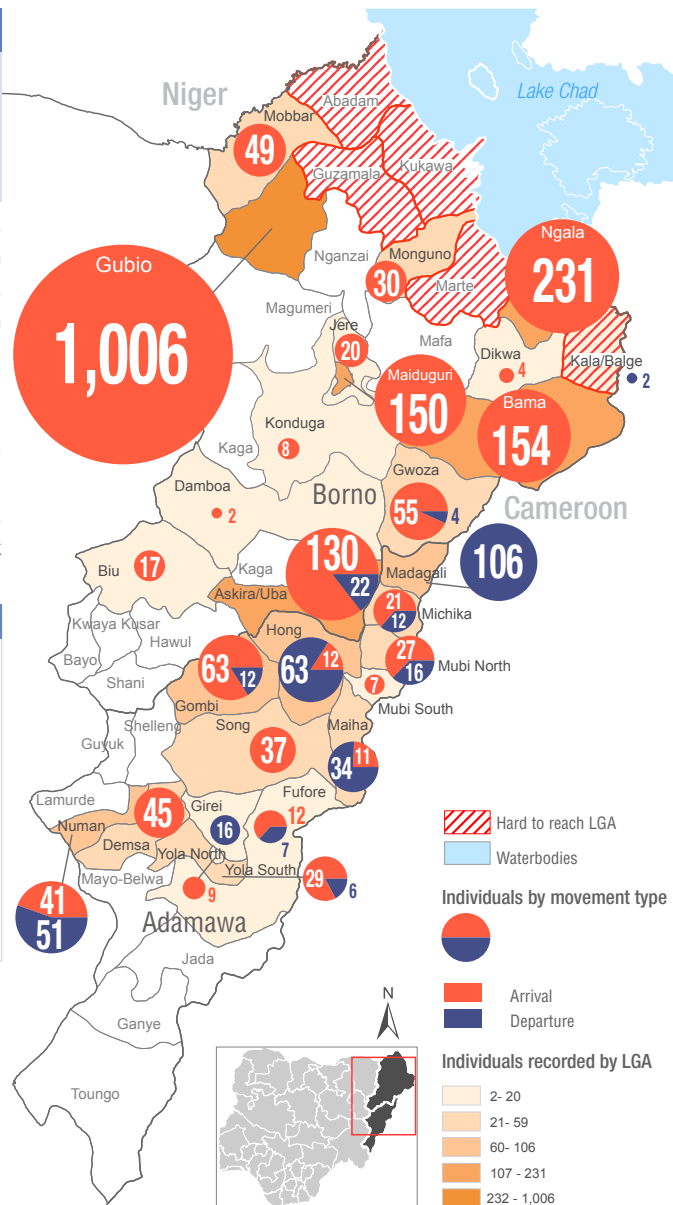
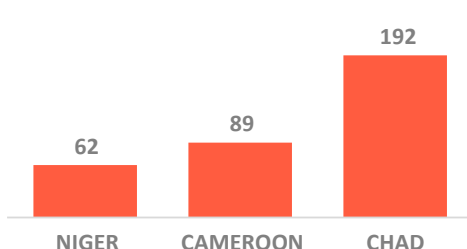
Number of individuals by movement triggers



Affected population



Arrivals from Neighbouring Countries



* Movements in Kala/Balge were captured by ETT outreach staff in the LGA

Summary of major movements

Gubio: 1,006 arrivals were recorded in Gubio LGA of Borno State. 472 arrivals were tracked in Gubio I ward and they include 19 from Ardimini, 18 from Furrar, 23 from Gubio I, 30 from Gubio II, 60 from Kingowa and 7 from Ngetra ward of Gubio LGA, 12 from Bale Galtimari, 10 from Dala Lawanti, 7 from Gomari, 8 from Mashamari and 5 from Old Maiduguri ward of Jere LGA, 36 from Bolori I, 137 from Bolori II, 6 from Gamboru Liberty, 7 from Hausari, 24 from Lamisula Jabbamari, 15 from Maisandari and 36 from Shehurai North ward of Maiduguri Metropolitan council. Others include 5 from Geidam of Yobe state and 7 from Diffa in Niger Republic. 534 arrivals were tracked in Gubio II ward and they include 17 from Auno/Chabbol of Konduga LGA, 87 from Gubio II, 5 from Ngetra and 5 from Zowo ward of Gubio LGA, 5 from Bale Galtimari ward, 5 from Dala Lawanti and 13 from Mashamari ward of Jere LGA, 63 from Bolori I, 143 from Bolori II, 5 from Gamboru Liberty, 6 from Gwenge I, 7 from Gwenge II, 43 from Lamisula Jabbamari, 6 from Mafoni, 37 from Maisandari, 25 from Shehurai North and 10 from Shehurai South ward of Maiduguri Metropolitan council. Others include 15 from Bauchi and 9 from Katagum LGA of Bauchi State, 8 from Hadija and 14 from Kiyawa LGA of Jigawa State and 6 from Damaturu LGA in Yobe State. All the arrivals relocated voluntarily.

Ngala: 231 arrivals were recorded in Ngala LGA of Borno State. The arrivals include 19 from Rann "A" ward of Kala/Balge LGA, 20 from Makary in Cameroon and 192 from Chad. 40% of the new arrivals reported to have relocated due to poor living conditions, 26% was due to the ongoing conflict while 34% relocated voluntarily.

Bama: 154 arrivals were recorded in Bama LGA of Borno State. The arrivals include 3 from Darajamal ward, 21 from Sabsabwa/Soye/Bulongu ward and 7 from Soye Ward and were tracked at Shehurai/Hausari/Mairi ward of Bama LGA. Other arrivals include 5 from Dikwa ward of Dikwa LGA, 30 from Dusuman ward of Jere LGA, 19 from Auno/Chabol of Konduga LGA, 51 from Mora and 18 from Mokolo in Cameroon. 40% of the new arrivals reported to have relocated due to poor living conditions while 60% relocated voluntarily.

Askira/Uba: 130 arrivals and 22 departures were recorded in Askira/Uba LGA of Borno State. The arrivals include 3 from Uba ward and were tracked at Uvu Uda ward of Askira/Uba LGA. Other arrivals include 55 from Dugja ward of Biu LGA, 7 from Chibok Garu ward of Chibok LGA, 10 from Gombi South ward of Gombi LGA, 4 from Dala Lawanti ward of Jere LGA and 51 from Hong LGA of Adamawa State. The 22 departures are from Bita/Izge ward of Gwoza LGA. 45% of the new arrivals reported to have relocated due to improved security, 39% due to poor living conditions while 15% relocated voluntarily. The departures were due to poor living conditions.

New Arrival Malnutrition Screening Summary (children 6-59 months)

An exhaustive nutrition screening using monitoring of symptoms of acute malnutrition mid upper arm circumference (MUAC) and Oedema was conducted by Nutrition Sector partners for 121 children of 6-59 months. Of the 121 children screened, the MUAC reading was 2 children (1 from inaccessible and the other from accessible area) in the Red category, 10 were in the Yellow category and 109 were measured in the Green category. No cases of Oedema were reported in the 5 LGAs reports were received from.

The results also include 67 children from neighbouring Cameroon, Chad and Republic of Niger (22 moved to Bama, 8 to Mobbar while 37 moved to Ngala); out of the 67 children measured, 1 was in the red category, 59 were in the green category and 7 children were in the yellow category. All children found with acute malnutrition have been admitted for treatment.

Please note, the data presented are not surveillance results and should be interpreted with caution.

LGA	MUAC Categories						Total
	Green ($\geq 12.5\text{cm}$)		Yellow (11.5 cm - 12.5cm)		Red ($< 11.5\text{cm}$)		
	In-Accessible	Accessible	In-Accessible	Accessible	In-Accessible	Accessible	
Bama	5	42	0	2	0	0	49
Gwoza	1	15	0	0	0	0	16
Mobbar	0	6	0	2	0	0	8
Monguno	6	0	1	0	1	1	9
Ngala	3	31	0	5	0	0	39
Total	15	94	1	9	1	1	121

■ Nourished
 ■ Moderate Acute Malnutrition (MAM)
 ■ Severe Acute Malnutrition (SAM)

Table 1. Details of movements by locations of assessment and locations of arrival / departure - only movements with at least 19 persons are listed below

Tracking location			Movement location							
STATE	LGA	WARD	STATE2	LGA2	WARD2	ARRIVAL	DEPARTURE	Grand Total		
ADAMAWA	DEMSA	DONG	ADAMAWA	NUMAN	NUMAN I	37	-	37		
	HONG	UBA	BORNO	ASKIRA /UBA	MUSSA	-	32	32		
	MADAGALI	HYAMBULA	ADAMAWA	MADAGALI	HYAMBULA	-	81	81		
				MUBI NORTH	MUCHALLA	-	25	25		
	MUBI NORTH	MUCHALLA	ADAMAWA	MADAGALI	HYAMBULA	25	-	25		
NUMAN	BARE	ADAMAWA	NUMAN	SABON PAGI	-	20	20			
				IMBURU	BARE	19	-	19		
BORNO	ASKIRA / UBA	LASSA	BORNO	GWOZA	BITA / IZGE	-	22	22		
		MUSSA	ADAMAWA	HONG	UBA	51	-	51		
		NGOHI	BORNO	BIU	DUGJA	55	-	55		
	BAMA	BUDUWA / BULA CHIRABE	BORNO	JERE	DUSUMAN	30	-	30		
				KONDUGA	AUNO / CHABBOL	19	-	19		
				CAMEROON	MAYO-SAVA	MORA	21	-	21	
				BORNO	BAMA	SABSABWA / SOYE/ BULONGU	21	-	21	
				CAMEROON	MAYO-SAVA	MORA	30	-	30	
	GUBIO	GUBIO I	BORNO	GUBIO	ARDIMINI	19	-	19		
					GUBIO I	23	-	23		
					GUBIO II	30	-	30		
					KINGOWA	60	-	60		
				MAIDUGURI M. C.	BOLORI I	36	-	36		
					BOLORI II	137	-	137		
					SHEHURI NORTH	36	-	36		
				GUBIO	GUBIO II	87	-	87		
				MAIDUGURI M. C.	GUBIO II	MAIDUGURI M. C.	BOLORI I	63	-	63
							BOLORI II	143	-	143
	LAMISULA JABBA MARI	36	-				36			
	MAISANDARI	37	-				37			
	SHEHURI NORTH	25	-				25			
	GWOZA	GWOZA TOWN GADAMAYO	ADAMAWA	MUBI NORTH	LAMORDE	19	-	19		
	MAIDUGURI M. C.	GWANGE II	BORNO	NGANZAI	GAJIRAM	21	-	21		
LAMISULA JABBAMARI		GAJIRAM			55	-	55			
MOBBAR	DAMASAK	R.NIGER	DIFFA	SHETTIMARI	49	-	49			
MONGUNO	MONGUNO	BORNO	KUKAWA	DORO	19	-	19			
NGALA	NGALA	BORNO	KALA BALGE	RANN "A"	19	-	19			
			CAMEROON	LOGONE-ET-CHARI	MAKARY	20	-	20		
		CHAD	MAMDI	BOL	114	-	114			
				BOL	78	-	78			

The depiction and use of boundaries, geographic names, and related data shown on maps and included in this report are not warranted to be error free nor do they imply judgment on the legal status of any territory, or any endorsement or acceptance of such boundaries by IOM. MUAC data is provided by UNICEF

For more information or to report an alert, please contact:

Henry Kwenin, DTM Project Coordinator: hkwenin@iom.int | +234 903 8852 524

Dave Bercasio, Emergency Coordinator: dbercasio@iom.int | +234 907 5070 001

DTM information products: <http://nigeria.iom.int/dtm>