

EMERGENCY TRACKING TOOL (ETT)

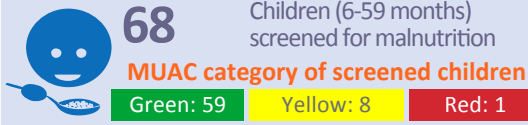
DTM Emergency Tracking Tool (ETT) is deployed to track and provide up-to-date information on sudden displacement and other population movements

ETT Report: No. 134 | 26 August - 1 September 2019

Movements



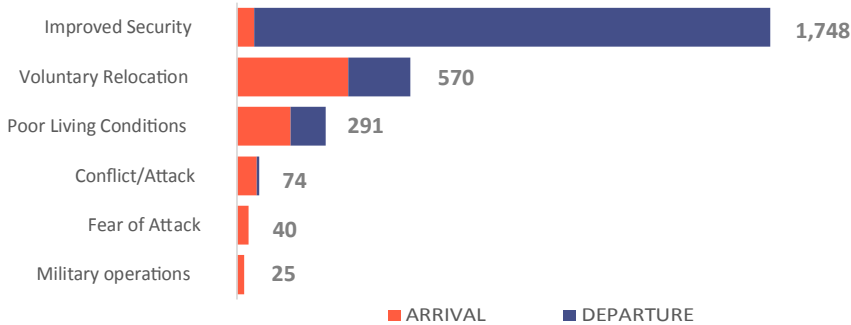
New Arrival Screening by Nutrition Partners



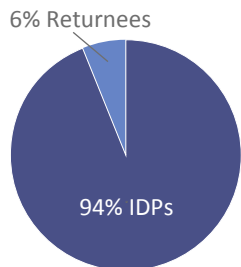
From the period 26 August – 1 September, a total of 2,748 movements were recorded, comprising of 729 arrivals and 2,019 departures. Arrivals were recorded at locations in Askira/Uba, Bama, Dikwa, Gwoza, Konduga, Maiduguri, Mobbar, Monguno and Ngala Local Government Areas (LGAs) of Borno state, and locations in Demsa, Fufore, Gombi, Madagali, Maiha, Michika, Mubi North, Mubi South, Numan, Song, Yola North and Yola South LGAs of Adamawa state. Departures were recorded in Askira/Uba, Bama, Chibok, Gubio, Gwoza, Kala/Balge, Maiduguri and Monguno LGAs of Borno state, locations in Fufore, Girei, Gombi, Hong, Maiha, Michika, Mubi North, Numan, Yola North and Yola South LGAs of Adamawa state.

ETT assessments identified the following movement triggers: improved security (64%), voluntary relocation (21%), poor living conditions (11%), conflict/attack (3%), fear of attack (1%) and military operations (1%).

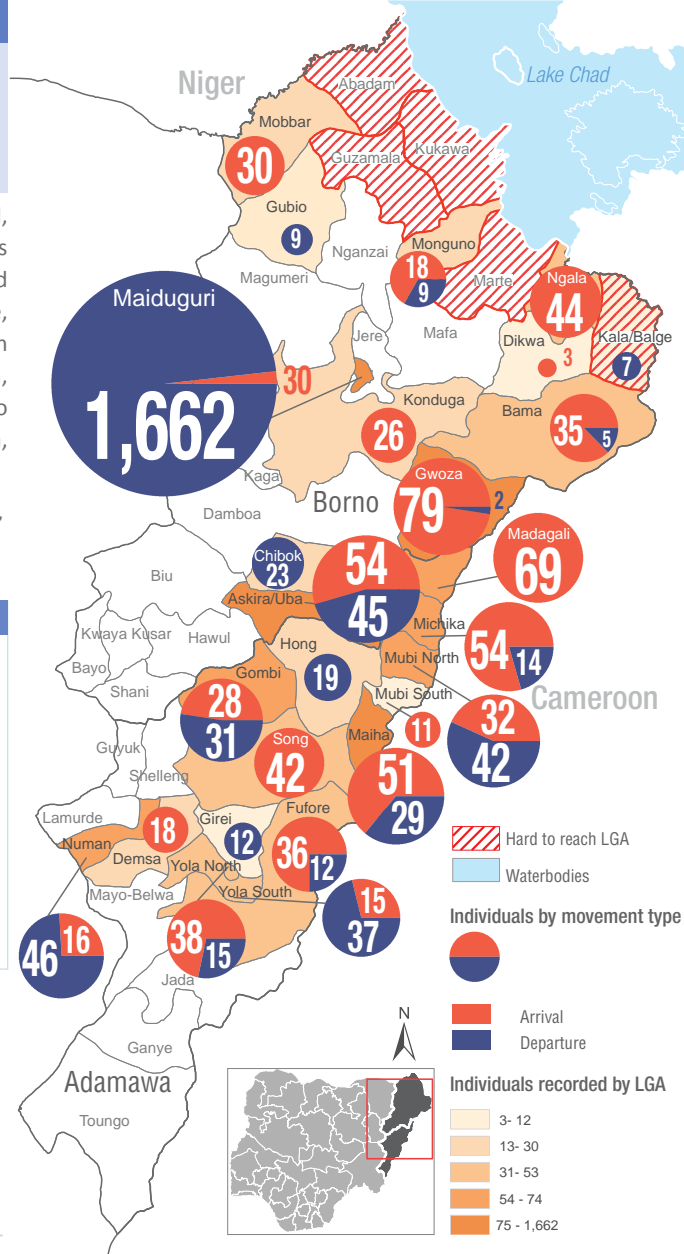
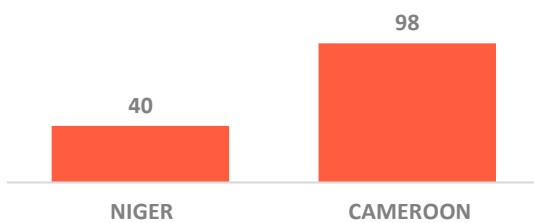
Number of individuals by movement triggers



Affected population



Arrivals from Neighbouring Countries



* Movements in Kala/Balge were captured by ETT outreach staff in the LGA

Summary of major movements

Maiduguri: 30 arrivals and 1,662 departures were recorded in Maiduguri Metropolitan Council of Borno state. The arrivals include 2 individuals from Banki Camp in Buduwa/Bula Chirabe ward of Bama LGA, 12 from Gubio Town II ward of Gubio LGA and 16 from Gaji Ganna I ward of Magumeri LGA. The 1,662 departures were all from Bolori II ward. 73% of the new arrivals reported to have relocated due to the ongoing conflict while 7% relocated due to fear of attack. All the departures were on account of improved security.

Askira/Uba: 54 arrivals and 45 departures were recorded in Askira/Uba LGA of Borno state. The arrivals include 5 from Gatamarwa ward of Chibok LGA, 49 from Kilindila to Rumirgo within Chul/Rumirgo ward. The departures include 17 from Hausari/Tampul ward and 28 from Uvu Uda ward. 80% of the new arrivals reported to have relocated due fear of attack while 20% relocated due to the ongoing conflict. 38% of the departures were due to poor living conditions while 62% were due to improved security.

Gwoza: 79 arrivals and 2 departures were recorded in Gwoza LGA of Borno state. The arrivals include 17 from Darajamal ward and Shehuri/Hausari ward of Bama LGA, 3 from Monguno ward of Monguno LGA, 8 from GubioTown II ward of Gubio LGA. Other arrivals include 17 from Mora in Cameroon, 6 from Dutse LGA of Jigawa State, 1 from Eti'osa of Lagos state, 6 from Kuje Area Council of Abuja, 9 from Mubi South LGA and 4 from Yola North LGA of Adamawa state. The 2 departures were from Transit camp in Pulka/Bokko ward of Gwoza LGA. 32% of the new arrivals reported to have relocated due to military operations, 38% due to poor living conditions while 30% relocated voluntarily. The departures were all voluntary.

Maiha: 51 arrivals and 29 departures were recorded in Maiha LGA of Adamawa state. The arrivals include 10 from Lokuwa ward of Mubi North LGA, 7 from Mayonguli ward of Maiha LGA, 7 from Gwoza LGA of Borno state and 27 from Yaounde in Cameroon. The departures include 16 from Manjekin ward and 13 from Maiha Gari ward. 73% of the new arrivals reported to have relocated due to poor living conditions while 27% relocated voluntarily. The departures were all voluntary.

New Arrival Malnutrition Screening Summary (children 6-59 months)

An exhaustive nutrition screening using monitoring of symptoms of acute malnutrition mid-upper arm circumference (MUAC) and Oedema was conducted by Nutrition Sector partners for 68 children of 6-59 months. Of the 68 children screened, the MUAC reading was 1 child in the Red category, 8 were in the Yellow category and 59 were measured in the Green category. No case of Oedema was reported in the 6 LGAs that we received reports from.

The results also include 23 children from neighbouring Cameroon and Republic of Niger (2 children moved to Bama, 12 to Mobbar and 9 to Ngala); out of the 23 children measured, none was in the red category with 18 in the green category and the remaining 5 in the yellow category. All children found with acute malnutrition have been admitted for treatment.

LGA	MUAC Categories						Total
	Green ($\geq 12.5\text{cm}$)		Yellow (11.5 cm - 12.5cm)		Red (<11.5cm)		
	In-Accessible	Accessible	In-Accessible	Accessible	In-Accessible	Accessible	
Bama	4	1	1	0	0	0	6
Gwoza	6	16	1	0	0	0	23
Konduga	0	7	0	0	0	0	7
Mobbar	0	9	0	3	0	0	12
Monguno	0	7	0	1	0	1	9
Ngala	0	9	0	2	0	0	11
Total	10	49	2	6	0	1	68

■ Nourished

■ Moderate Acute Malnutrition (MAM)

■ Severe Acute Malnutrition (SAM)

Please note, the data presented are not surveillance results and should be interpreted with caution.

Table 1. Details of movements by locations of assessment and locations of arrival / departure - only movements with at least 23 persons are listed below

Tracking location			Movement location					
STATE	LGA	WARD	STATE2	LGA2	WARD2	ARRIVAL	DEPARTURE	Grand Total
ADAMAWA	GIREI	MODIRRE VINIKLANG	ADAMAWA	FUFORE	FUFORE	-	12	12
	FUFORE	BETI	ADAMAWA	FUFORE	ADARAWO	24	-	24
		DAWARE		GIREI	MODIRE/ VINIKILANG	12	-	12
		FUFORE		DEMESA	DONG	-	12	12
	GOMBI	GARKIDA	BORNO	HAWUL	HIZHI	13	-	13
		GOMBI SOUTH	ADAMAWA	GOMBI	GOMBI NORTH	-	21	21
				MICHIKA	BAZZA MARGI	15	-	15
	MADAGALI	MADAGALI	ADAMAWA	YOLA SOUTH	MBAMBA	61	-	61
	MAIHA	MAIHA	ADAMAWA	MICHIKA	MICHIKA II	-	13	13
		MANJEKIN		MADAGALI	DUHU/ SHUWA	-	16	16
		SORAU 'B'	CAMEROON	YAOUNDE	MFOUNDI	27	-	27
	MICHIKA	BAZZA MARGI	ADAMAWA	GOMBI	GOMBI NORTH	-	14	14
		MADZI		MAIHA	MAYONGULI	17	-	17
		MICHIKA II		MUBI NORTH	KOLERE	12	-	12
		MUNKAVACITTA		MICHIKA	VI / BOKA	21	-	21
	MUBI NORTH	BETSO	ADAMAWA	GIREI	MODIRE/ VINIKILANG	-	13	13
		DIGIL		MUBI NORTH	VIMTIM	-	18	18
		YELWA		MADAGALI	DUHU/ SHUWA	17	-	17
				MUBI NORTH	BETSO	15	-	15
	NUMAN	GAMADIO	ADAMAWA	DEMESA	KPASHAM	-	12	12
NUMAN II		DONG			-	16	16	
SABON PEGI		YOLA NORTH			GWADABAWA	16	-	16
SONG	SONG GARI	ADAMAWA	HONG	BANGSHIKA	16	-	16	
YOLA NORTH	KARENA	ADAMAWA	YOLA NORTH	LUGGERE	38	-	38	
BORNO	ASKIRA / UBA	HUSARA / TAMPUL	ADAMAWA	MICHIKA	MADZI	-	17	17
		UBA	BORNO	ASKIRA / UBA	CHULL/RUMIRGO	38	-	38
		UVU UDA		ASKIRA / UBA	KOPA / MULTHAFU	-	28	28
	BAMA	SHEHURI / HAUSARI / MAIRI	BORNO	BAMA	DARAJAMAL	25	-	25
	CHIBOK	KUBURMBULA	BORNO	ASKIRA / UBA	ASKIRA EAST	-	23	23
	GWOZA	PULKA/BOKKO	BORNO	BAMA	DARAJAMAL	17	-	17
			CAMEROON	MAYO-SAVA	MORA	17	-	17
	KONDUGA	AUNO / CHABBOL	BORNO	GUBIO	GUBIO TOWN II	26	-	26
	MAIDUGURI	BOLORI II	GUBIO	GUBIO I	AJARI	-	698	698
				GUBIO II	GANAMARI	-	366	366
HAUSARI					-	598	598	
MAISANDARI		BORNO	GUBIO	GUBIO TOWN II	12	-	12	
MOBBAR	DAMASAK	R.NIGER	DIFFA	SHETTIMARI	30	-	30	
NGALA	NGALA WARD	CAMEROON	LOGONE-ET-CHARI	MAKARY	44	-	44	

The depiction and use of boundaries, geographic names, and related data shown on maps and included in this report are not warranted to be error free nor do they imply judgment on the legal status of any territory, or any endorsement or acceptance of such boundaries by IOM. MUAC data is provided by UNICEF.

For more information or to report an alert, please contact:

Henry Kwenin, DTM Project Coordinator: hkwenin@iom.int | +234 903 8852 524

Dave Bercasio, Emergency Coordinator: dbercasio@iom.int | +234 907 5070 001

DTM information products: <http://nigeria.iom.int/dtm>