



# EMERGENCY TRACKING TOOL (ETT)

DTM Emergency Tracking Tool (ETT) is deployed to track and provide up-to-date information on sudden displacement and other population movements

## ETT Report: No. 133 | 19 - 25 August 2019

### Movements

**Arrivals:**  
1,371 individuals

**Departures:**  
5,609 individuals

### New Arrival Screening by Nutrition Partners

**128** Children (6-59 months) screened for malnutrition

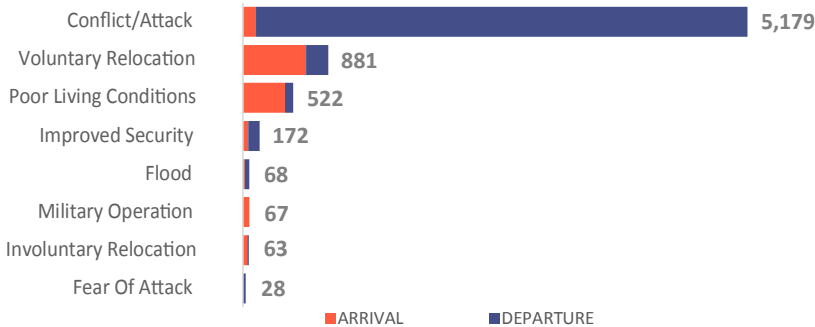
**MUAC category of screened children**

Green: 116   Yellow: 10   Red: 2

From the period 19 – 25 August, a total of 6,980 movements were recorded, composed of 1,371 arrivals and 5,609 departures. Arrivals were recorded at locations in Askira/Uba, Bama, Damboa, Gwoza, Maiduguri, Mobbar, Monguno and Ngala Local Government Areas (LGAs) of Borno state, and locations in Demsa, Girei, Gombi, Hong, Lamurde, Madagali, Maiha, Mayo-Belwa Michika, Mubi North, Mubi South, Numan, Song, Yola North and Yola South LGAs of Adamawa state. Departures were recorded in Askira/Uba, Gubio, Gwoza, Kala/Balge and Magumeri LGAs of Borno state, locations in Fufore, Girei, Gombi, Hong, Madagali, Maiha, Mayo-Belwa, Michika, Mubi North, Mubi South, Numan and Yola North LGAs of Adamawa state.

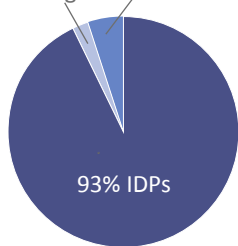
ETT assessments identified the following movement triggers: conflict/attack (74%), voluntary relocation (13%), poor living conditions (7%), improved security (2%), flood (1%), military operations (1%), involuntary relocation (0.9%) and fear of attack (0.4%).

### Number of individuals by movement triggers

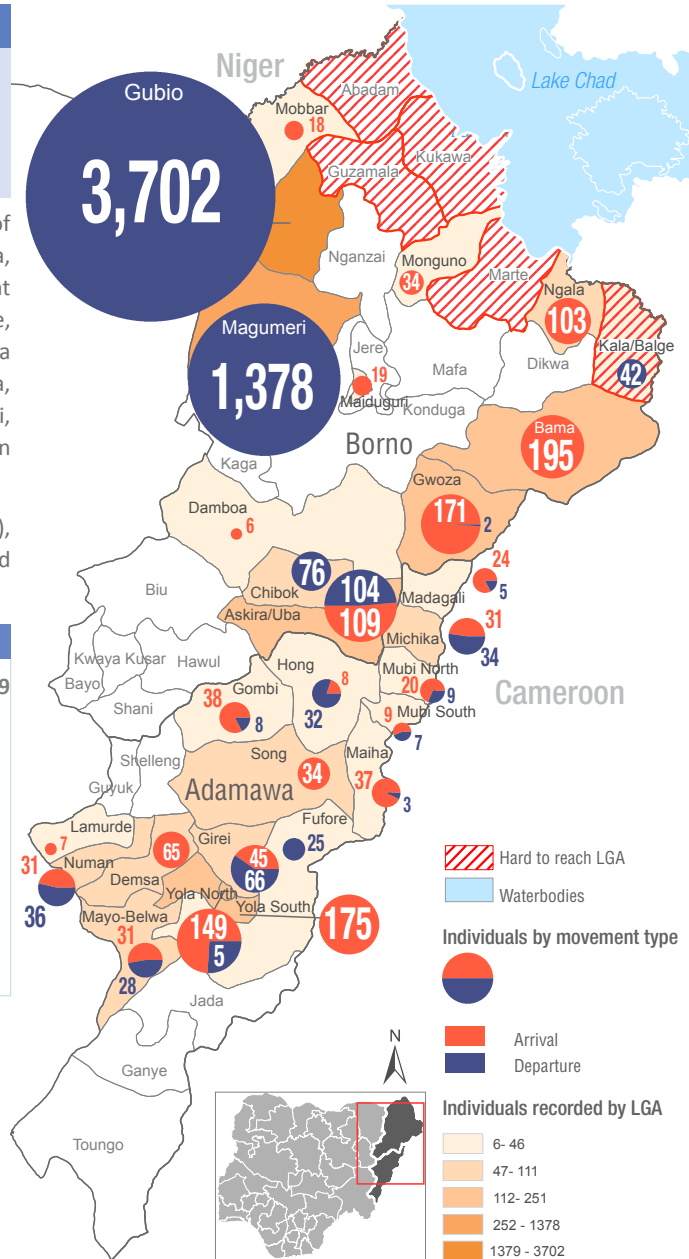
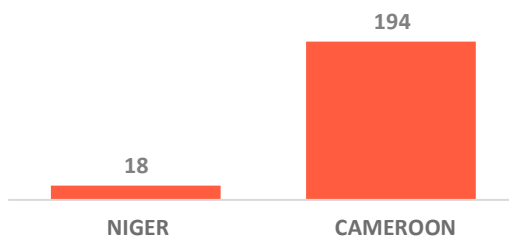


### Affected population

2% Refugees   5% Returnees



### Arrivals from Neighbouring Countries



\* Movements in Kala/Balge were captured by ETT outreach staff in the LGA

### Summary of major movements

**Gubio:** 3,702 departures were recorded in Gubio LGA of Borno state. These include 970 departures from Gubio I ward comprising of 24 to Auno Chabbol ward of Konduga LGA, 85 to Bolori I ward, 820 to Bolori II ward and 42 to Maisandari ward of Maiduguri Metropolitan Council. 2,732 departures from Gubio II ward which include 26 to Old Maiduguri and 2 to Gomari ward of Jere LGA, 3 to Hausari/Zango ward, 863 to Bolori I ward, 1,771 to Bolori II ward, 20 to Maisandari ward, and 8 to Bulabulin ward of Maiduguri Metropolitan Council. All the departures were due to the ongoing conflict.

**Magumeri:** 1,378 departures were recorded in Magumeri LGA of Borno state. These include 488 departures to Bolori I ward and 890 to Bolori II ward of Maiduguri Metropolitan Council. All the departures were due to the ongoing conflict.

**Askira/Uba:** 109 arrivals and 104 departures were recorded in Askira/Uba LGA of Borno state. these include 3 arrivals from Madagali LGA of Adamawa state, other arrivals include 29 from Wamdio/Giwi ward and were captured in Chul/Rumirgo ward, 47 from Vocational Training Centre camp into Bulabulin in Lassa ward and 30 from Uba ward into Mussa ward of Askira/Uba LGA. The 104 departures were from Lassa ward to Kopa/Multhafu ward in Askira/Uba LGA. 50% of the IDPs reported to have relocated due to improved security, 22% due to poor living conditions, 14% due to the ongoing conflict and 14% relocated involuntarily. The departures were all due to improved security.

**Yola North:** 149 arrivals and 52 departures were recorded in Yola North LGA of Adamawa state. These include 133 arrivals from Mokolo in Cameroon and 16 from Namtari ward in Yola South LGA into Karewa ward of Yola North LGA. The departures include 41 from Damilu to Jamnutu Haske in Jambutu ward of Yola North LGA and 11 from Karewa ward to Luggere ward of Yola North LGA. 34% of the IDPs reported to have relocated voluntarily and 66% were due to flood. All the departures were due to flood.

## New Arrival Malnutrition Screening Summary (children 6-59 months)

An exhaustive nutrition screening using monitoring of symptoms of acute malnutrition mid upper arm circumference (MUAC) and Oedema was conducted by Nutrition Sector partners for 128 children of 6-59 months. Of the 128 children screened, the MUAC reading was 2 children (inaccessible areas) in the Red category, 10 were in the Yellow category and 116 were measured in the Green category. No case of Oedema was reported in the 5 LGAs that we received reports from.

The results also include 30 children from neighbouring countries Cameroon and Republic of Niger (15 children moved to Bama, 5 to Gwoza, 2 to Mobbar and 8 to Ngala. Out of the 30 children measured, none was in the red category, 28 were in the green category and 2 were in the yellow category. All children found with severe acute malnutrition have been admitted for treatment.

*Please note, the data presented are not surveillance results and should be interpreted with caution.*

LGA	MUAC Categories						Total
	Green ( $\geq 12.5\text{cm}$ )		Yellow (11.5 cm - 12.5cm)		Red ( $< 11.5\text{cm}$ )		
	In-Accessible	Accessible	In-Accessible	Accessible	In-Accessible	Accessible	
Bama	12	42	1	2	1	0	58
Gwoza	6	21	2	3	0	0	32
Konduga	13	0	0	0	1	0	14
Mobbar	0	2	0	0	0	0	2
Ngala	0	20	0	2	0	0	22
<b>Total</b>	<b>31</b>	<b>85</b>	<b>3</b>	<b>7</b>	<b>2</b>	<b>0</b>	<b>128</b>

■ Nourished

■ Moderate Acute Malnutrition (MAM)

■ Severe Acute Malnutrition (SAM)

**Table 1. Details of movements by locations of assessment and locations of arrival / departure** - only movements with at least 23 persons are listed below

Tracking location			Movement location						
STATE	LGA	WARD	STATE2	LGA2	WARD2	ARRIVAL	DEPARTURE	Grand Total	
ADAMAWA	DEMSA	BORRONG	ADAMAWA	DEMSA	DONG	23	-	23	
	GIREI	GIREI I	ADAMAWA	DEMSA	GWAMBA	25	-	25	
				MAIHA	SARAU B	-	29	29	
	MAIHA	SORAU B	ADAMAWA	GIREI	GIREI I	24	-	24	
	MAYO-BELWA	MAYO-BELWA	ADAMAWA	MAYO-BELWA	MAYO-BELWA	31	-	31	
				TARABA	LAU	LAU	-	28	28
	MICHIKA	MUNKAVACITTA	ADAMAWA	MICHIKA	VI-BOKA	-	23	23	
	NUMAN	NUMAN I	ADAMAWA	NUMAN	BOLKI	-	36	36	
	YOLA NORTH	JAMBUTU	ADAMAWA	YOLA NORTH	JAMBUTU	-	41	41	
KAREWA		CAMEROON	MAYO-TSANAGA	MOKOLO	133	-	133		
MBAMBA		ADAMAWA	YOLA NORTH	KAREWA	133	-	133		
BORNO	ASKIRA/UBA	CHULL/RUMIRGO	BORNO	ASKIRA/UBA	CHULL/RUMIRGO	38	-	38	
		LASSA			KOPA/MULTHAFU	-	104	104	
		MUSSA			LASSA	47	-	47	
		WAMDEO / GIWI			UBA	30	-	30	
	BAMA	SHEHURI / HAUSARI / MAIRI	BORNO	BAMA	BUDUWA	51	-	51	
					GONIRI	23	-	23	
					SOYE	44	-	44	
	CHIBOK	KUBURMBULA	ADAMAWA	MUBI NORTH	YELWA	-	76	76	
	GUBIO	GUBIO I	BORNO	KONDUGA	AUNO CHABBOL	-	24	24	
					BOLORI I	-	50	50	
					BOLORI II	-	765	765	
					MAIDUGURI	MAISANDARI	-	42	42
					BOLORI I	-	26	26	
					BOLORI II	-	55	55	
		GUBIO II	BORNO	KONDUGA	JERE	OLD MAIDUGURI	-	26	26
					AUNO CHABBOL	-	30	30	
					MAIDUGURI	BOLORI I	-	863	863
					BOLORI II	-	1,709	1,709	
	GONERI	BORNO	KONDUGA	MAIDUGURI	BOLORI II	-	54	54	
				BOLORI II	-	54	54		
GWOZA	GWOZA TOWN GADAMAYO	ADAMAWA	YOLA NORTH	ALKALAWA	33	-	33		
		BORNO	MAIDUGURI	FEZZAN	24	-	24		
		GOMBE	GOMBE	MADAKI	43	-	43		
KALA BALGE	RANN "A"	BORNO	NGALA	NGALA	-	42	42		
MAGUMERI	MAGUMERI	BORNO	MAIDUGURI	BOLORI I	-	488	488		
				BOLORI II	-	890	890		
NGALA	NGALA	BORNO	KALA BALGE	RANN	76	-	76		

The depiction and use of boundaries, geographic names, and related data shown on maps and included in this report are not warranted to be error free nor do they imply judgment on the legal status of any territory, or any endorsement or acceptance of such boundaries by IOM.

For more information or to report an alert, please contact:

Henry Kwenin, DTM Project Coordinator: [hkwenin@iom.int](mailto:hkwenin@iom.int) | +234 903 8852 524

Dave Bercasio, Emergency Coordinator: [dbercasio@iom.int](mailto:dbercasio@iom.int) | +234 907 5070 001

DTM information products: <http://nigeria.iom.int/dtm>