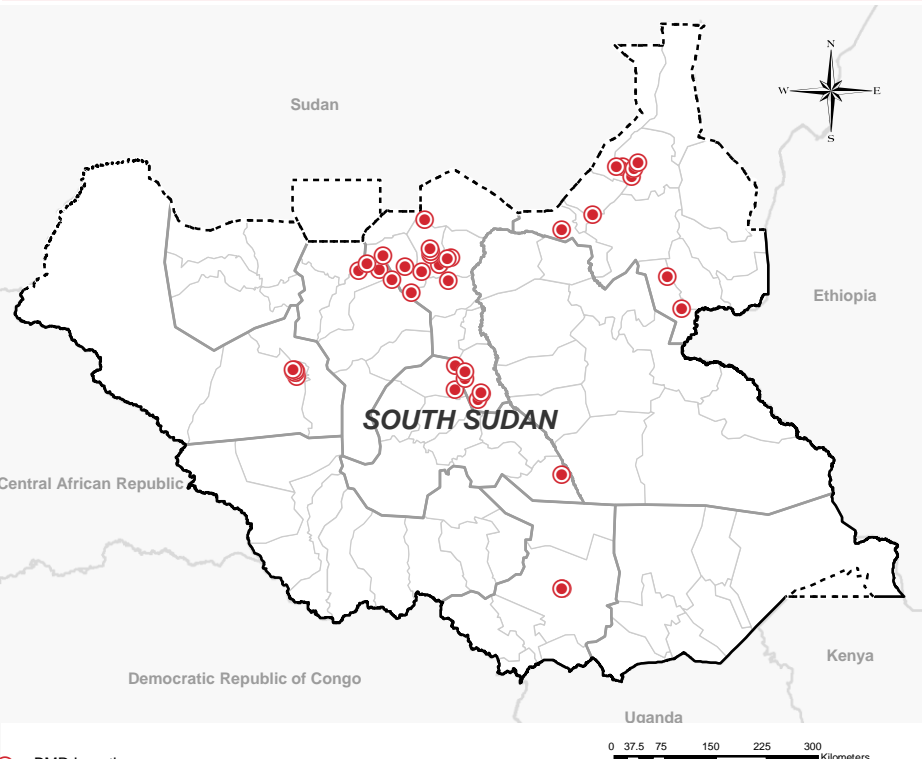


LOCATIONS OF THE ACTIVITIES



● BMR Location
 □ Country
 □ State
 □ County

Disclaimer: This map is for illustration purposes only. Names and boundaries on this map do not imply official endorsement or acceptance by IOM.

Targeted for Authentication	411,719 Individuals
Authenticated	376,345 Individuals
Newly Registered	32,129 Individuals
Deactivation	1,628 Individuals
Change of Checkpoint	1,448 Individuals
Lost Card Replacement	643 Individuals
Merging Households	223 Individuals
De-Registration	2,386 Individuals

County	Number of locations	Authenticated	Newly registered	Deactivation
Juba	2	28,690	-	263
Bor South	1	1,905	65	35
Guit	4	9,673	-	-
Mayom	11	48,049	-	-
Panyijar	7	-	4,991	-
Rubkona	5	181,723	1,157	549
Luakpiny (Nasir)	10	-	18,392	-
Malakal	1	22,776	-	107
Melut	5	21,214	-	282
Wau	7	62,315	7,524	392
Total	55	376,345	32,129	1,628

IOM's biometric registration system has been active since 2014, with over 776,000 beneficiaries active in its database to date. Since August 2018, IOM and the World Food Programme (WFP) are collaborating on the project "Enhancing targeted food distribution through biometric data management" seeking to contribute to increased food security throughout South Sudan. Under this collaboration, IOM is responsible for checking the eligibility of households receiving assistance through fingerprint authentication at selected distribution sites. Those beneficiaries whose households do not retrieve their food assistance in three consecutive distributions are assumed to no longer be present in the location and subsequently become deactivated. As a result, fluctuations in registered beneficiary numbers can be observed on an ongoing basis. Biometric registration, complemented through regular authentication, enhances beneficiary targeting, avoiding duplications through fingerprint scanning and ensuring that the assistance reaches the intended beneficiaries. Biometric maintenance work is supported by a variety of donors, including DFID, ECHO, SDC and USAID alongside funds received from WFP.

DEFINITIONS

Authenticated	Number of beneficiaries reached through WFP GFD authentication
Newly Registered	Number of individuals who were newly registered, i.e. new entries into the system
Deactivation	Number of beneficiaries who missed 3 consecutive food distributions and have been deactivated from the database system
Change of Checkpoint	Number of individuals for whom the checkpoint (registration location) was changed, e.g. from Bentiu PoC to Nhialdu
Lost Card Replacement	Number of individuals who were assisted by replacing lost cards
Merging Households	Number of beneficiaries who wish to be joined with another family, i.e. merged into one household with a single beneficiary card
De-Registration	As a result of a relocation/facilitated returns or other movement out of the site.