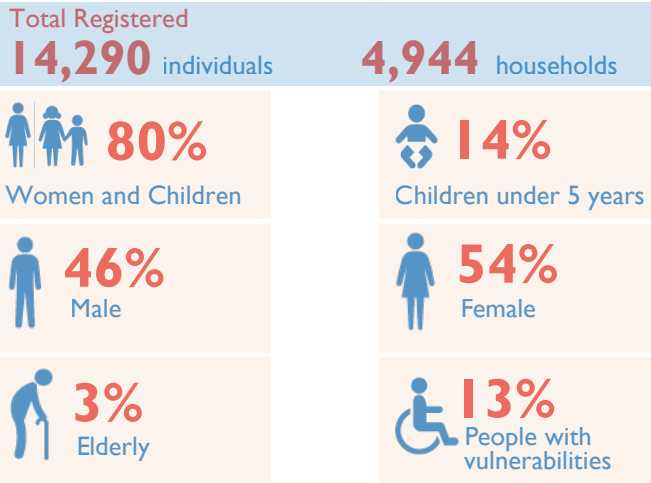


Biometric Registration Update | 25 April 2019

Following the completion of Biometric Registration at 400 Housing Estate Gubio Camp in Konduga Local Government Area (LGA) of the conflict-affected State of Borno, 4,944 households and 14,290 individuals were registered. This data is as of 25 April 2019. The average family size in this location is 3; with 51 per cent of the families comprising 1-2 members, 32 per cent comprising 3-4 members, 13 per cent comprising 5-6 members, 3 per cent comprising 7-8 members, and 1 per cent comprising 9 and more members.

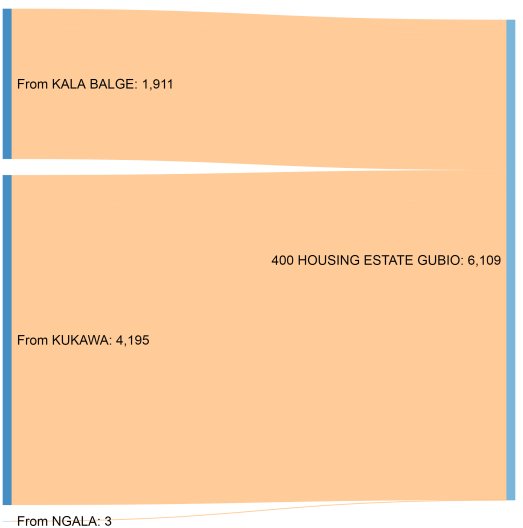
Out of the total registered population, 6,109 individuals which represent 43 per cent were captured as new arrivals whose movements were due to attacks in some LGAs in Borno. Majority (69%) of the newly arrived individuals are from Kukawa LGA, with the remaining 31 per cent from Kala-Balge LGA.

Vulnerability data was collected to identify individuals who may require additional humanitarian assistance, 13 per cent of the registered individuals were categorized as afflicted by one or more vulnerabilities. Some of the vulnerabilities included visual impairment, physically disadvantaged, single parent headed households, serious medical conditions, etc.



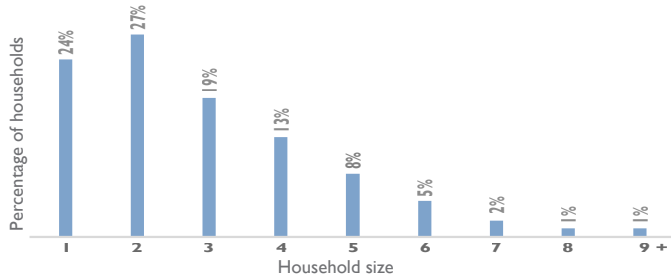
New Arrivals Registered
6,109 individuals
1,998 households

31%
 Came from Kala/Balge LGA



69%
 Came from Kukawa LGA

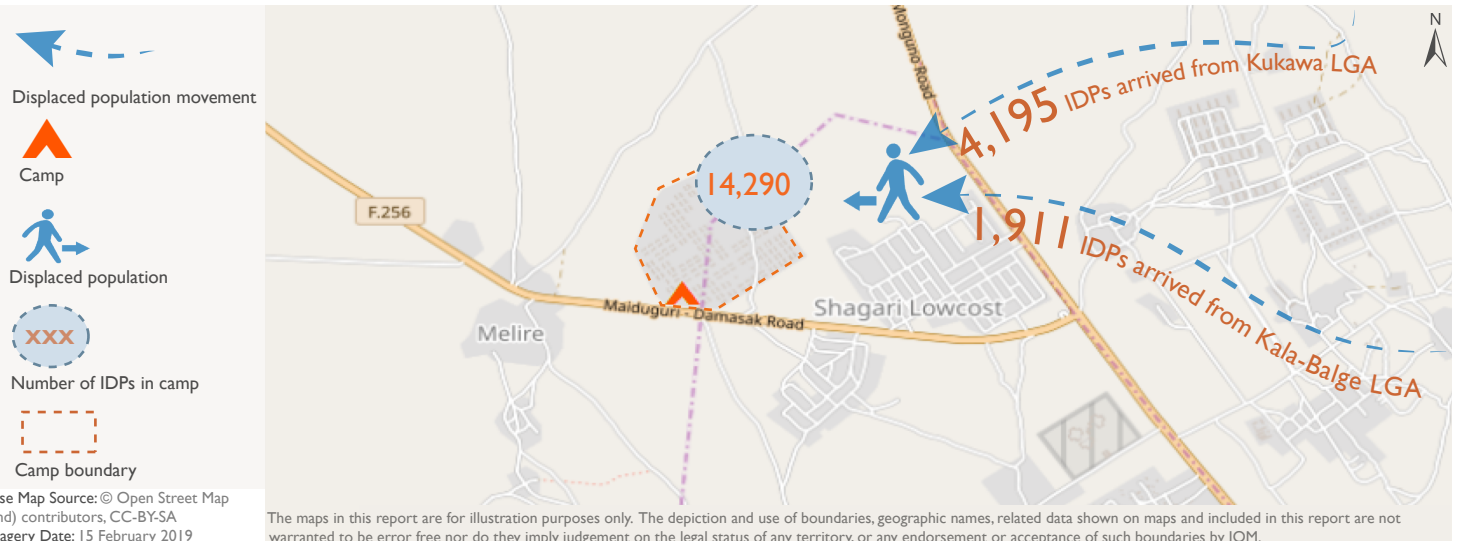
Household size distribution



New arrivals within the period of December 2018 - April 2019

Registered Population by Age and Gender

Location Details			Total		Male				Female					
Place of Registration	Location Type	SSID	HHs	Inds	Male	Female	0-4 y	5-17 y	18-59 y	60+ y	0-4 y	5-17 y	18-59 y	60+ y
400 Housing Estate Gubio	Camp	BO_S017	2,946	8,181	3,993	4,188	318	1,795	1,678	202	335	1,862	1,872	119
400 Housing Estate Gubio (New Arrival)	Camp	BO_S017	1,998	6,109	2,640	3,469	657	1,015	899	69	685	1,023	1,666	95
Total Registered			4,944	14,290	6,633	7,657	975	2,810	2,577	271	1,020	2,885	3,538	214
Percentage				100%	46%	54%	7%	20%	18%	2%	7%	20%	25%	1%



Base Map Source: © Open Street Map (and) contributors, CC-BY-SA
 Imagery Date: 15 February 2019

The maps in this report are for illustration purposes only. The depiction and use of boundaries, geographic names, related data shown on maps and included in this report are not warranted to be error free nor do they imply judgement on the legal status of any territory, or any endorsement or acceptance of such boundaries by IOM.

For more information or to report an alert, please contact:
 Henry Kwenin, DTM Project Coordinator: hkwenin@iom.int | +234 9038852524

More products are available on <https://displacement.iom.int/nigeria>