



EMERGENCY TRACKING TOOL (ETT)

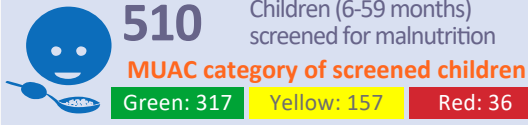
DTM Emergency Tracking Tool (ETT) is deployed to track and provide up-to-date information on sudden displacement and other population movements

ETT Report: No. 121 | 27 May - 02 June 2019

Movements



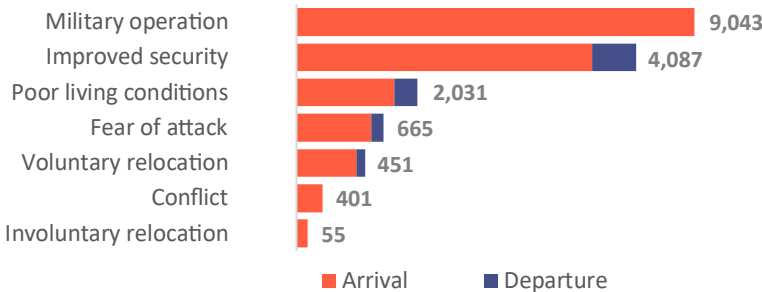
New Arrival Screening by Nutrition Partners



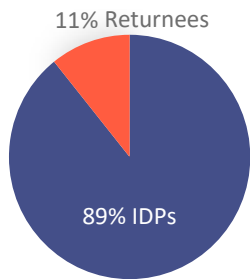
Within the period of 27 May 2019 - 2 June, a total of 5,998 movements were recorded, including 5,494 arrivals and 504 departures. Arrivals were recorded at locations in Askira/Uba, Bama, Biu, Damboa, Gwoza, Jere, Maiduguri, Mobbar, Monguno and Ngala Local Government Areas (LGAs) of Borno state and locations in Demsa, Fufore, Girei, Gombi, Guyuk, Hong, Madagali, Maiha, Mayo Belwa, Michika, Mubi North, Mubi South, Numan, Song, Yola North and Yola South LGAs of Adamawa state. Departures were recorded at Monguno LGA of Borno state, Demsa, Girei, Guyuk, Hong, Madagali, Mayo Belwa, Michika, Mubi North, Numan, Yola North and Yola South LGAs of Adamawa state.

ETT assessments identified the following movement triggers: voluntary relocation (7%), involuntary relocation (1%), improved security (32%), fear of attack (8%), ongoing conflict (2%) military operation (38%) and poor living conditions (12%).

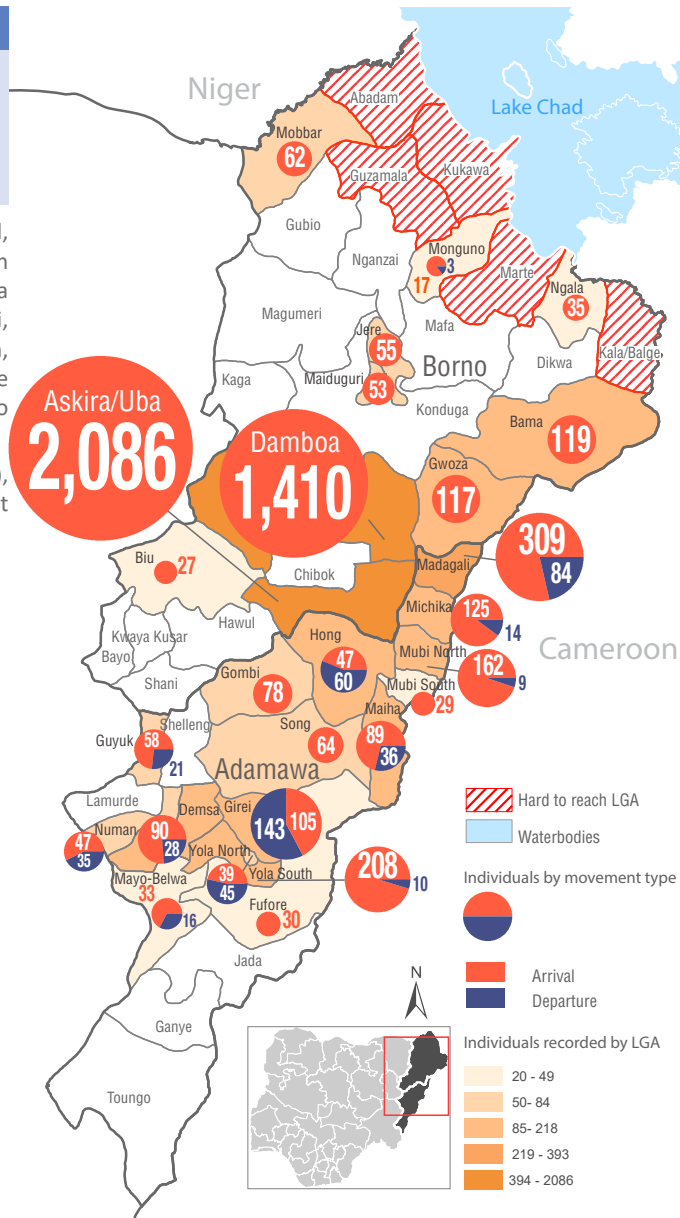
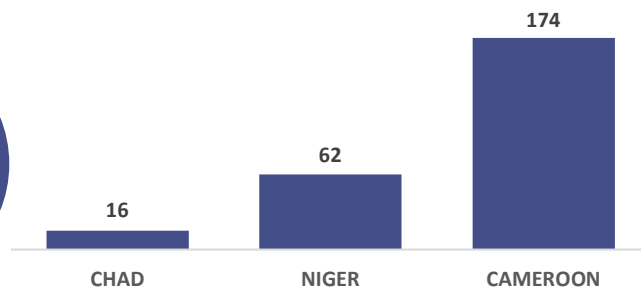
Number of individuals by movement triggers



Affected population



Arrivals from Neighbouring Countries



* Arrivals in Kala/Balge were captured by ETT outreach staff in the LGA

Summary of major movements

Askira/Uba: 2,086 arrivals were recorded in Askira/Uba LGA of Borno state. These include 852 arrivals from Kopa/Multhafu ward, 813 arrivals from Uda/Uvu ward, 219 arrivals from Wamdeo/Giwi ward and 93 arrivals from Chull/Rumirgo ward of Askira/Uba LGA tracked at Lassa ward of Askira/Uba LGA. Other arrivals include 63 from Azur/Multe/Fofor ward of Damboa LGA, 22 arrivals from Gatamarwa ward of Chibok LGA and 24 arrivals from Jambutu ward of Yola North LGA of Adamawa. 55% of the new arrivals reported to have relocated due to improved security, 40% due to military operations, 2% due to fear of attack while 3% involuntarily relocated.

Damboia: 1,410 arrivals were recorded in Damboia LGA of Borno state. The new arrivals were all from Sabon Gari in Aure/Multe/Forfor ward of Damboia LGA and they all reported to have relocated due to military operation.

Madagali: 309 arrivals and 84 departures were recorded in Madagali LGA of Adamawa state. These include 140 arrivals from Girei I and Modire/Vinikilang wards of Girei LGA, 23 arrivals from Gombi South ward of Gombi LGA and 55 arrivals from Uba, Kwarhi and Banshika ward of Hong LGA. Other arrivals include 10 from Jambutu ward of Yola North LGA, 13 arrivals from Toungo ward of Yola South LGA and 15 arrivals from Shelleng ward of Shelleng LGA. Arrivals from Borno state include 18 from Uba ward of Askira/Uba LGA, 10 arrivals from Gadamayo ward of Gwoza LGA, 9 arrivals from Maisandari ward of Maiduguri Metropolitan Council and 8 arrivals from Dala Lawanti ward of Jere LGA. Departures include 19 from Fufore ward of Fufore LGA, 30 departures from Modire/Vinikilang ward and 35 departures from Girei II ward of Girei LGA. 74% of the new arrivals reported to have relocated due to improved security while 26% was due to fear of attack. 64% of the departure was due to fear of attack while 36% was due to poor living conditions.

Yola South: 208 arrivals and 10 departures were recorded in Yola South LGA of Adamawa state. These include 8 arrivals from Duhu/Shuwa ward of Madagali LGA, 152 arrivals from Pulka ward, 11 arrivals from Bulabulin/Gwoza ward and 10 arrivals from Wakane and Ngoshe wards of Gwoza LGA of Borno state. Other arrivals include 14 from Darajamal ward of Bama LGA and 13 arrivals from Walafa ward of Askira/Uba LGA of Borno state. The only departure was from Madzi ward of Michika LGA of Adamawa state. 90% of the new arrivals reported to have relocated due to poor living conditions, 4% due to fear of attack while 6% was due to the ongoing conflict. The departure however, was due to poor living conditions.

IOM's Emergency Tracking Tool (ETT) is deployed in Nigeria's northeastern states. Only Local Government Areas (LGAs) in which the IDP population changed since the latest DTM round of assessments are represented in this report. The data has been collected by DTM staff deployed at the locations listed and cross-checked with the partners present on the ground.

New Arrival Malnutrition Screening Summary (children 6-59 months)

An exhaustive nutrition screening using monitoring of symptoms of acute malnutrition mid-upper arm circumference (MUAC) and Oedema was conducted by Nutrition Sector partners for 510 children of 6-59 months. Of the 510 children screened, the MUAC reading was: 36 children (from inaccessible area) were in the Red category, 157 were in the Yellow category and 317 were measured in the Green category. No case of Oedema was reported in the 7 LGAs.

The results also include 32 children from neighbouring Cameroon, Chad and Republic of Niger (19 moved to Bama, 2 to Gwoza and 7 to Ngala). Out of the 32 children measured, none was in the red category, 28 were in the green category and 4 children were in the yellow category. All children found with severe acute malnutrition have been admitted for treatment. The data presented is not surveillance results and should be interpreted with caution.

LGA	MUAC Categories						Total
	Green ($\geq 12.5\text{cm}$)		Yellow (11.5 cm - 12.5cm)		Red ($< 11.5\text{cm}$)		
	Inaccessible	Accessible	Inaccessible	Accessible	Inaccessible	Accessible	
Bama	12	19	1	2	2	0	36
Damboa	247	0	151	0	34	0	432
Gwoza	15	3	1	0	0	0	19
Mobbar	0	3	0	1	0	0	4
Monguno	0	9	0	0	0	0	9
Ngala	2	7	0	1	0	0	10
Total	276	41	153	4	36	0	510

■ Nourished

■ Moderate Acute Malnutrition (MAM)

■ Severe Acute Malnutrition (SAM)

Table 1. Details of movements by locations of assessment and locations of arrival/departure - only movements with at least 25 persons are listed below

Tracking location			Movement location				
STATE	LGA	WARD	STATE	LGA	WARD	ARRIVAL	DEPARTURE
ADAMAWA	DEMSA	BILLE	ADAMAWA	GIREI	GERENG WARD	33	-
		DEMSA		DEMSA	BORRONG	-	28
		DONG		NUMAN	NUMAN I	27	-
	GIREI	GERENG	ADAMAWA	DEMSA	BILLE	33	26
		GIREI I		MADAGALI	K/WUROGAYANDI	35	70
		JERA BONYO		MICHIKA	MICHIKA I	-	29
		MODIRE/ VINIKILANG		MADAGALI	GULAK	30	-
	HONG	UBA	ADAMAWA	MICHIKA	MINISKI/WURO NGIKI	-	34
	MADAGALI	DUHU / SHUWA	ADAMAWA	HONG	UBA	33	-
		GULAK		GIREI	MODIRE/VINIKILANG	-	30
		K/WURO NGAYANDI	ADAMAWA	FUFURE	FUFURE	-	19
				GIREI	GIREI I	70	-
	MICHIKA	MICHIKA I	ADAMAWA	GIREI	GIREI I	37	-
				HONG	UBA/HILDI	29	-
				MICHIKA	KAMALE	34	-
	MUBI NORTH	LOKUWA	ADAMAWA	MADAGALI	GULAK	28	-
		YELWA	BORNO	KUKAWA	BAGA	27	-
87						-	
NUMAN	BOLKI	ADAMAWA	NUMAN	SABON PEGI	25	-	
SONG	SONG GARI	ADAMAWA	YOLA NORTH	NASSARAWO	35	-	
YOLA SOUTH	BOLE YOLDE PATE	BORNO	GWOZA	PULKA	152	-	
BORNO	ASKIRA / UBA	DILLE / HUYIM	BORNO	ASKIRA/UBA	UDA/UVU	417	-
		LASSA			KOPA/MULTHAFU	852	-
		MUSSA			UDA/UVU	396	-
		UBA			CHULL/RUMIRGO	93	-
					WAMDEO/GIWI	219	-
	BAMA	SHEHURI / HAUSARI / MAIRI	BORNO	BAMA	DARAJAMAL	63	-
	BIU	BURATAI	BORNO	BIU	BURATAI	50	-
	DAMBOA	DAMBOA	BORNO	DAMBOA	AZUR/MULTE/FORFOR	27	-
	GWOZA	PULKA/BOKKO	CAMEROON	MARWA	MORA	1,410	-
	JERE	OLD MAIDUGURI	BORNO	KALA BALGE	RANN	45	-
	MAIDUGURI M.C	MAISANDARI	BORNO	JERE	DALA LAWANTI	47	-
	MOBBAR	DAMASAK	R.NIGER	DIFFA	SHETTIMARI	48	-
						62	-

The depiction and use of boundaries, geographic names, and related data shown on maps and included in this report are not warranted to be error free nor do they imply judgment on the legal status of any territory, or any endorsement or acceptance of such boundaries by IOM.

For more information or to report an alert, please contact:

Henry Kwenin, DTM Project Coordinator: hkwenin@iom.int | +234 903 8852 524 Dave Bercasio, Emergency Coordinator: dbercasio@iom.int | +234 907 5070 001 DTM information products: <http://nigeria.iom.int/dtm>