



DISPLACEMENT TRACKING MATRIX (DTM) OROMIA, ETHIOPIA
ROUND 16: March/April 2019
Summary of Key Findings
DATE OF PUBLICATION: June 2019



OVERVIEW OF DISPLACEMENT

Oromia region
DTM Round 16
MARCH 2019

Legend:

Sites by causes of displacement

- Conflict
- Climate induced
- Others

IDPs in assessed woredas

- 197 - 1,000
- 1,001 - 10,000
- 10,000 - 70,000
- 70,000 - 175,476
- Covered by RRA
- No IDPs
- Not assessed

Boundaries

- International Boundary
- Regional Boundary
- Zonal Boundary
- Woreda Boundary

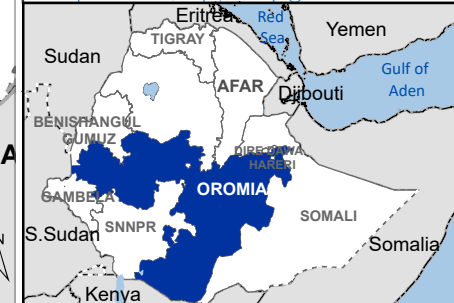
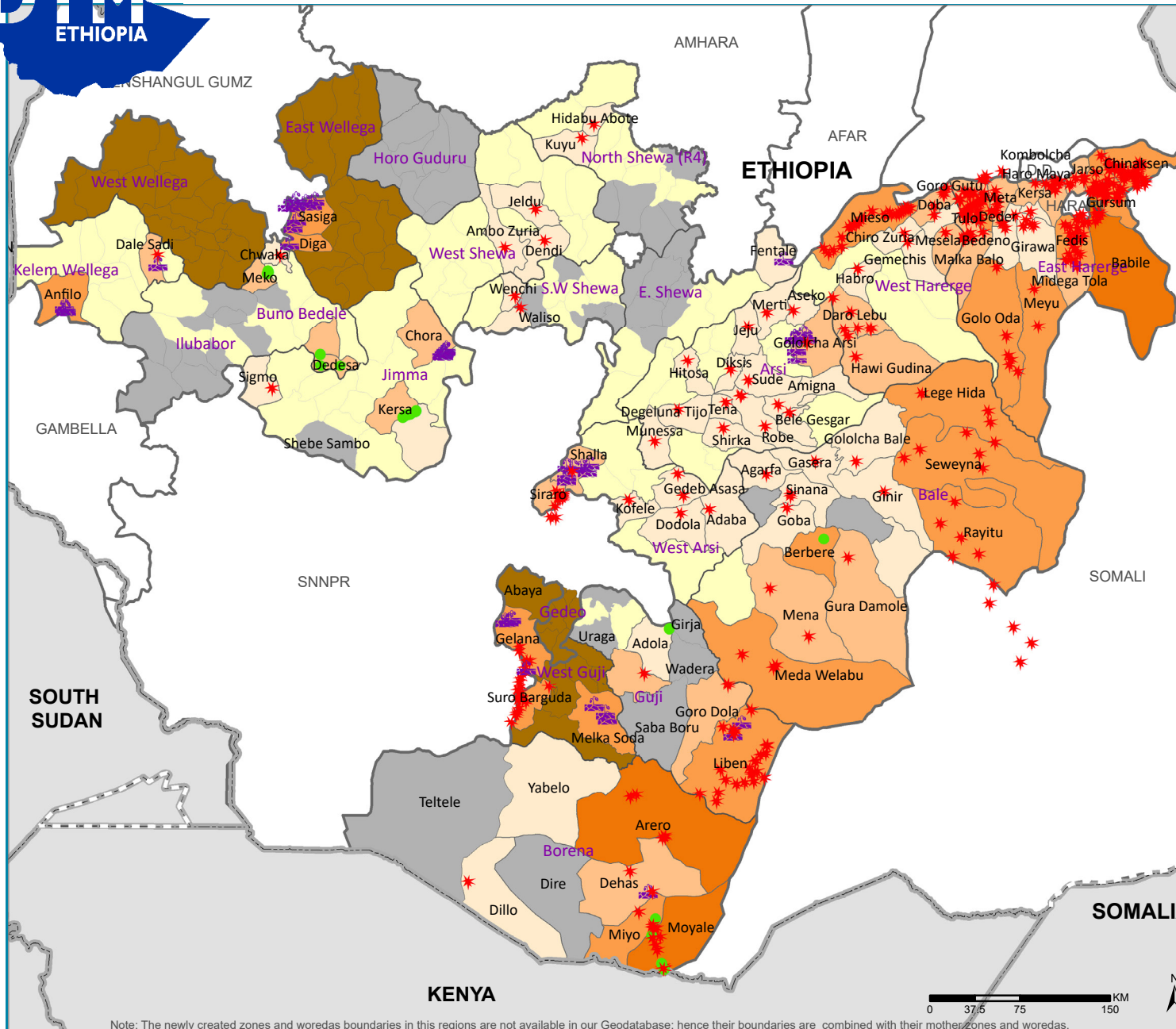
Site Assessment: **852,573 IDPs**

RRA 6 Gedeeo and West Guji: **690,364 IDPs**

RRA 2 East and West Wellega: **158,385 IDPs**

Total number of IDPs: 1,701,322

Sources : IOM Map production date : 06 May 2019. This map is for illustration purposes only. Names and boundaries on this map do not imply official endorsement or acceptance by IOM. Map Data Source: Boundary shapefile - CSA 2008
www.displacement.iom.int/ethiopia_dtmethiopia@iom.int



Note: The newly created zones and woredas boundaries in this regions are not available in our Geodatabase; hence their boundaries are combined with their mother zones and woredas.

* For a more comprehensive overview of displacement figures in East and West Wellega, as well as Gedeeo and West Guji, kindly refer to DTM's Rapid Response Assessment (RRA) reports.

** Woredas in the map above that show displacement figures in East and West Wellega, as well as Gedeeo and West Guji are cases of protracted displacement and thus differ from the IDPs tracked through the RRA. These woredas include Sasiga, Diga, Gelana, Suro Barguda and Melka Soda.



DISPLACEMENT TRACKING MATRIX (DTM) OROMIA REGION, ETHIOPIA

ROUND 16: March/April 2019

OROMIA REGION - KEY FINDINGS

LOCATION AND CAUSE OF DISPLACEMENT:

852,573 displaced individuals comprising 144,316 households in 463 displacement sites were identified in Oromia region. These figures represent an decrease of 6,717 individuals (-0.78%), an increase of 414 households (0.29%), and since round 15 (January/February 2019), an increment of 9 sites (1.91%). 16.2% sites opened during 2018 and 1% opened in 2019. Conflict was the primary cause of displacement for an estimated 79% of the displaced population.

DEMOGRAPHICS: 51% of displaced individuals were female and 49% were male. 58% were younger than 18 years old. 4% were over 60 years old.

SHELTER: 178 sites reported that over 25% of households were living in shelters that were below regional and cultural standards.

WASH: 18 sites meet SPHERE standards of access to over 15 liters of water per person per day. 173 displacement sites (37%) reported having no latrines.

FOOD, NUTRITION AND LIVELIHOODS: 33 sites (7%), representing 69,252 individuals, reported no access to food. 83% of sites reported that IDPs did not have access to income generating activities.

HEALTH: Pneumonia was the primary health concern in this round of data collection with 136 sites reporting this.

EDUCATION: In 49% of sites, 50% or less of the children on site are attending formal primary school. Formal primary school education is available at 401 sites. Alternative basic education (ABE) is available at 29 sites.

COMMUNICATION: 57% of sites reported that site management were IDPs' primary source of information followed by local leaders at 17% of sites.

Figure 2 shows IDP numbers disaggregated by cause over time.

Figure 1 illustrates trends in stock totals of displacement in the region over time compared to recent displacement.

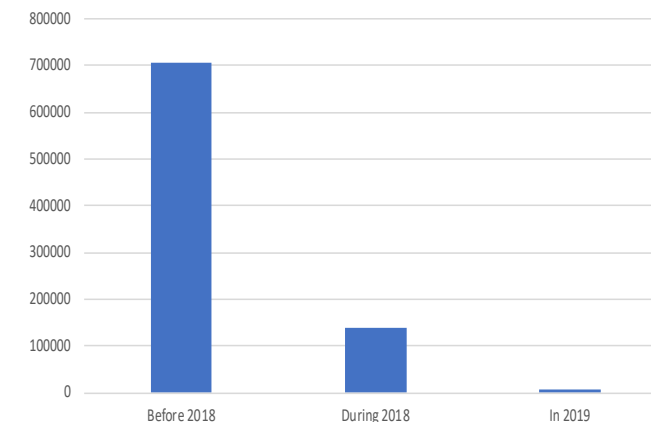


Figure 1: Trends in stock totals of displacement and new displacements before 2018, during 2018 and 2019

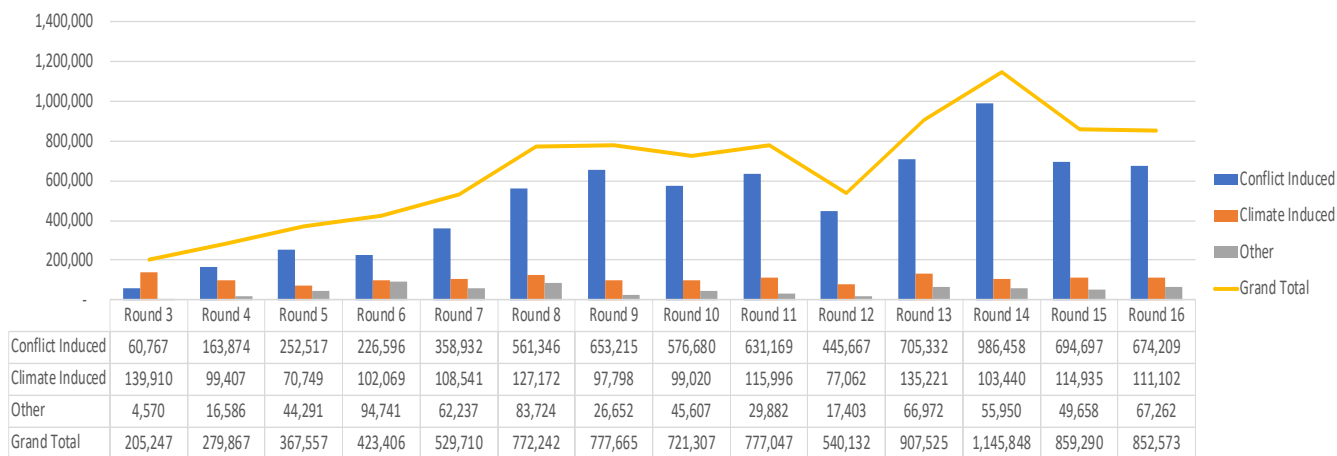


Figure 2: IDPs by cause of displacement by round



DISPLACEMENT TRACKING MATRIX (DTM) OROMIA REGION, ETHIOPIA ROUND 16: March/April 2019

MOBILITY TRENDS AND CAUSE OF DISPLACEMENT

Conflict has consistently been reported as the primary cause of displacement in the region (as indicated by figure 4). IDPs displaced in 2019, during 2018 and before 2018 reported being displaced by conflict. In addition to this, 144,386 IDPs (17%) reported being displaced previously. Furthermore, IDPs from 16 sites were leaving the current place of displacement. Of these, IDPs from 2 sites were going to the nearest village and IDPs from 14 sites intended to return to their place of origin.

Regarding the duration of sites: 1% of all sites identified opened in 2019 while 16.20% opened in 2018. 82.9% of sites opened before 2018.

The majority of IDPs identified in the region were displaced to locations near their areas of origin. 63% of IDPs in the region are internally displaced from the region, within the region. Of the IDPs displaced within the region, 51% were displaced within their zone of origin.

Figure 3 shows the number of IDPs displaced by zone and cause of displacement. Figure 4 shows the distribution of IDPs by driver of displacement and time of displacement.

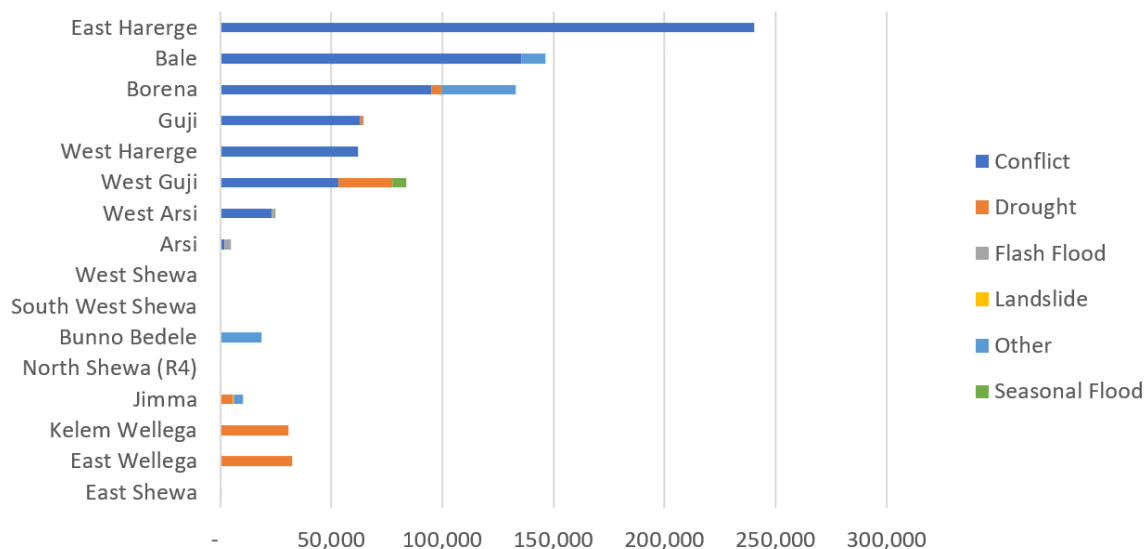


Figure 3: IDPs displaced by zone and cause of displacement

Duration	Conflict	Climate Induced	Other	Grand Total
Before 2018	554,306	101,757	50,414	706,477
During 2018	112,930	7,992	16,848	137,770
In 2019	6,973	1,353	0	8,326
Grand Total	674,209	111,102	67,262	852,573

Figure 4: Distribution of IDPs by cause of displacement and time of displacement



DISPLACEMENT TRACKING MATRIX (DTM) OROMIA REGION, ETHIOPIA

ROUND 16: March/April 2019

DURABLE SOLUTIONS, VULNERABILITIES AND DEMOGRAPHICS

In 54.86% of the sites, IDPs foresaw a resolution to their displacement, while IDPs at 45.14% of sites did not.

At 38.88% of sites, IDPs prefer local integration as a durable solution to their displacement while at 23.97% sites they prefer return.

Figure 5 shows the number of sites by obstacles to return, while figure 6 shows support IDPs need to return or locally integrate.

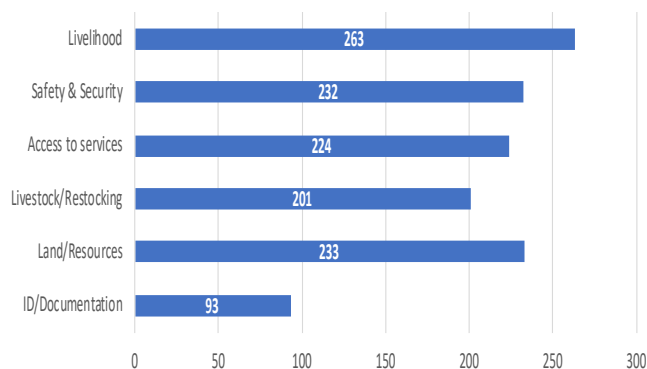


Figure 5: Number of sites by obstacles to return

The demographic breakdown is shown in figure 7. Individuals with specific vulnerabilities were also reported at displacement sites and are represented in figure 8.

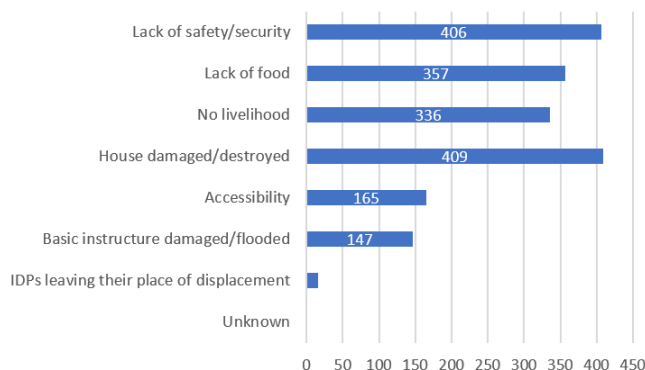


Figure 6: Number of sites by support needed to return or locally integrate

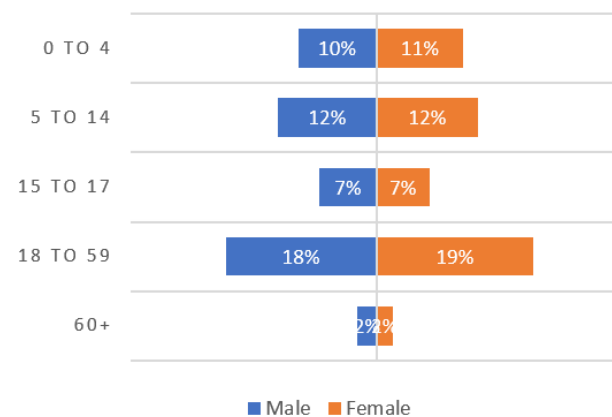


Figure 7: Demographic breakdown

Vulnerable Population	Number of IDPs
Number of breastfeeding mothers	26,700
Elderly headed households	6,270
Elderly persons without care givers	4,293
Number of members of ethnic minorities	282
Number of members of religious minorities	863
Orphaned children	1,181
Persons with chronic diseases/serious medical conditions	708
Number of persons with disabilities over 18	1,062
Number of persons with disabilities under 18	538
Number of pregnant girls under 18	207
Number of pregnant women over 18	13,474
Separated children	283
Single-female headed households	8,434
Single-male headed households	2,215
Unaccompanied children	168
Single-child headed households	27
Grand Total	66,705

Figure 8: Vulnerable populations



DISPLACEMENT TRACKING MATRIX (DTM) OROMIA REGION, ETHIOPIA

ROUND 16: March/April 2019

INCREASE	NEW
DECREASE	UNCOVERED/CLOSED
NO CHANGE	

Round 15-16 Comparison Table

Zone	Woreda	Displacement Reason	Round 16			% change in estimated number of households	Round 15		
			HHs	Individuals	Sites		HHs	Individuals	Sites
Arsi	Amigna	Conflict	41	131	1	0.0%	41	129	1
Arsi	Aseko	Conflict	22	70	1	0.0%	22	67	1
Arsi	Bele Gesgar	Conflict	30	103	1	0.0%	30	103	1
Arsi	Degeluna Tijo	Conflict	39	122	1	0.0%	39	120	1
Arsi	Diksis	Conflict	21	54	1	0.0%	21	54	1
Arsi	Gololcha Arsi	Climate Induced	511	3,053	6	0.0%	511	2,701	6
Arsi	Gololcha Arsi	Conflict	31	97	1	0.0%	31	97	1
Arsi	Hitosa	Conflict	25	74	1	0.0%	25	74	1
Arsi	Jeju	Conflict	25	60	1	0.0%	25	60	1
Arsi	Merti	Conflict	24	117	1	-7.69%	26	114	1
Arsi	Munessa	Conflict	20	40	1	0.0%	20	42	1
Arsi	Robe	Conflict	132	362	3	0.0%	132	359	3
Arsi	Shirka	Conflict	206	440	1	0.0%	206	440	1
Arsi	Sude	Conflict	29	83	1	0.0%	29	81	1
Arsi	Tena	Conflict	26	70	1	0.0%	26	69	1
Arsi Total			1,182	4,876	22	-0.17%	1,184	4,510	22
Bale	Agarfa	Conflict	36	198	1	0.0%	36	198	1
Bale	Berberere	Other	1,500	10,689	1	0.0%	1,500	10,201	1
Bale	Dawe Kachen	Conflict	86	569	1	0.0%	86	569	1
Bale	Dawe Serar	Conflict	3,581	27,569	5	0.0%	3,581	26,835	5
Bale	Delo Mena	Conflict	1,140	8,016	2	0.0%	1,140	8,154	2
Bale	Gasera	Conflict	68	161	1	0.0%	68	155	1
Bale	Ginir	Conflict	155	556	1	+58.16%	98	556	1
Bale	Goba	Conflict	24	54	1	0.0%	24	54	1



DISPLACEMENT TRACKING MATRIX (DTM) OROMIA REGION, ETHIOPIA

ROUND 16: March/April 2019

Zone	Woreda	Displacement Reason	Round 16			% change in estimated # of HHs	Round 15		
			HHs	Individuals	Sites		HHs	Individuals	Sites
Bale	Gololcha Bale	Conflict	27	72	1	0.0%	27	72	1
Bale	Gura Damole	Conflict	247	1,840	1	0.0%	247	1,730	1
Bale	Lege Hida	Conflict	4,900	35,450	3	-4.58%	5,135	35,444	3
Bale	Meda Welabu	Conflict	3,978	22,979	6	0.0%	3,978	22,291	6
Bale	Rayitu	Conflict	2,180	14,993	5	0.0%	2,180	15,040	5
Bale	Seweyna	Conflict	3,241	22,819	6	0.0%	3,241	23,782	6
Bale	Sinana	Conflict	88	291	2	0.0%	88	286	2
Bale Total			21,251	146,256	37	-0.83%	21,429	145,367	37
Borena	Arero	Conflict	1,171	6,455	3	-46.60%	2,193	11,969	7
Borena	Dhaas	Climate Induced	362	1,990	1	-7.89%	393	2,141	1
Borena	Dhaas	Conflict	517	2,535	1	-69.04%	1,670	8,978	2
Borena	Dillo	Conflict	26	147	1	0.0%	-	-	-
Borena	Elwaye	Climate Induced	448	2,538	2	0.0%	-	-	-
Borena	Elwaye	Conflict	198	1,124	2	0.0%	-	-	-
Borena	Gamole	Conflict	45	259	1	-97.56%	1,846	9,907	6
Borena	Guchi	Conflict	7,526	42,555	9	-21.00%	9,526	51,855	10
Borena	Guchi	Other	2,340	13,221	2	0.0%	2,340	12,687	2
Borena	Moyale	Conflict	5,261	27,584	4	+8.30%	4,858	26,880	8
Borena	Moyale	Other	3,673	20,274	3	+430.01%	693	3,755	2
Borena	Wachile	Conflict	2,630	14,184	4	-28.53%	3,680	19,546	6
Borena Total			24,197	132,866	33	-11.04%	27,199	147,718	44
Bunno Bedele	Chwaka	Conflict	60	156	1	0.0%	60	213	1
Bunno Bedele	Dedesa	Other	1,587	10,926	4	-9.47%	1,753	10,105	4
Bunno Bedele	Mako	Other	984	7,419	3	0.0%	984	7,259	3
Bunno Bedele Total			2,631	18,501	8	-5.93%	2,797	17,577	8



DISPLACEMENT TRACKING MATRIX (DTM) OROMIA REGION, ETHIOPIA

ROUND 16: March/April 2019

Zone	Woreda	Displacement Reason	Round 16			% change in estimated # of HHs	Round 15		
			HHs	Individuals	Sites		HHs	Individuals	Sites
East Harerge	Babile	Conflict	8,784	44,340	20	0.0%	8,784	46,822	20
East Harerge	Bedeno	Conflict	112	538	4	0.0%	112	503	4
East Harerge	Chinaksen	Conflict	9,186	42,046	42	+7.24%	8,566	38,527	41
East Harerge	Deder	Conflict	2,528	11,571	28	0.0%	2,528	11,888	28
East Harerge	Fedis	Conflict	1,906	9,022	10	0.0%	1,906	9,013	10
East Harerge	Garu Muti	Conflict	201	973	5	0.0%	201	973	5
East Harerge	Girawa	Conflict	184	836	4	0.0%	184	673	4
East Harerge	Girawa	Other	-	-	-	-100.00%	46	226	1
East Harerge	Golo Oda	Conflict	147	698	1	+34.86%	109	566	1
East Harerge	Goro Gutu	Conflict	951	4,595	11	-34.82%	1,459	7,186	11
East Harerge	Gursum	Conflict	2,781	13,538	24	-1.66%	2,828	14,184	24
East Harerge	Haro Maya	Conflict	566	2,593	9	-13.06%	651	2,999	9
East Harerge	Jarso	Conflict	2,917	14,615	6	+3.62%	2,815	13,414	6
East Harerge	Kersa	Conflict	616	2,926	1	0.0%	616	2,618	1
East Harerge	Kombolcha	Conflict	99	366	3	0.0%	99	368	3
East Harerge	Kumbi	Conflict	7,242	40,526	5	0.0%	7,242	40,864	5
East Harerge	Kurfa Chele	Conflict	68	292	1	0.0%	68	284	1
East Harerge	Malka Balo	Conflict	226	1,043	7	0.0%	226	1,049	7
East Harerge	Meta	Conflict	1,181	6,642	4	+34.20%	880	4,671	4
East Harerge	Meyu Muluke	Conflict	5,871	33,163	3	+18.53%	4,953	27,724	3
East Harerge	Midlega Tola	Conflict	1,866	9,892	9	-1.06%	1,886	9,933	9
East Harerge Total			47,432	240,215	197	+2.76%	46,159	234,485	197
East Shewa	Fentale	Climate Induced	119	702	1	0.0%	119	708	1
East Shewa Total			119	702	1	0.0%	119	708	1



DISPLACEMENT TRACKING MATRIX (DTM) OROMIA REGION, ETHIOPIA

ROUND 16: March/April 2019

Zone	Woreda	Displacement Reason	Round 16			% change in estimated # of HHs	Round 15		
			HHs	Individuals	Sites		HHs	Individuals	Sites
North Shewa (R4)	Hidabu Abote	Conflict	20	40	1	0.0%	20	40	1
North Shewa (R4)	Kuyu	Conflict	40	88	1	0.0%	40	88	1
North Shewa (R4) Total			60	128	2	0.0%	60	128	2
South West Shewa	Waliso Town	Conflict	32	113	1	0.0%	32	113	1
South West Shewa	Wenchi	Conflict	31	66	1	0.0%	31	66	1
South West Shewa Total			63	179	2	0.0%	63	179	2
West Arsi	Adaba	Conflict	70	161	1	0.0%	70	160	1
West Arsi	Dodola	Conflict	38	108	1	0.0%	38	106	1
West Arsi	Gedeb Asasa	Conflict	102	490	2	0.0%	102	463	2
West Arsi	Kofele	Conflict	29	113	1	0.0%	29	112	1
West Arsi	Shalla	Climate Induced	229	1,963	7	0.0%	229	1,721	7
West Arsi	Shalla	Conflict	24	65	1	0.0%	24	64	1
West Arsi	Siraro	Conflict	3,088	22,076	10	+25.63%	2,458	17,656	4
West Arsi Total			3,580	24,976	23	+21.36%	2,950	20,282	17
West Guji	Abaya	Climate Induced	1,900	10,314	2	-25.69%	2,557	19,841	3
West Guji	Galana	Climate Induced	326	1,905	2	-13.30%	376	3,027	2
West Guji	Galana	Conflict	3,892	25,636	10	-2.87%	4,007	28,871	10
West Guji	Melka Soda	Climate Induced	2,812	18,519	5	+19.30%	2,357	16,567	5
West Guji	Melka Soda	Conflict	-	-	-	-100.00%	236	1,588	2
West Guji	Suro Barguda	Conflict	4,153	27,444	14	+54.90%	2,681	19,508	13
West Guji Total			13,083	83,818	33	+7.11%	12,214	89,402	35



DISPLACEMENT TRACKING MATRIX (DTM) OROMIA REGION, ETHIOPIA

ROUND 16: March/April 2019

Zone	Woreda	Displacement Reason	Round 16			% change in estimated # of HHs	Round 15		
			HHs	Individuals	Sites		HHs	Individuals	Sites
North Shewa (R4)	Hidabu Abote	Conflict	20	40	1	0.0%	20	40	1
North Shewa (R4)	Kuyu	Conflict	40	88	1	0.0%	40	88	1
North Shewa (R4) Total			60	128	2	0.0%	60	128	2
South West Shewa	Waliso Town	Conflict	32	113	1	0.0%	32	113	1
South West Shewa	Wenchi	Conflict	31	66	1	0.0%	31	66	1
South West Shewa Total			63	179	2	0.0%	63	179	2
West Arsi	Adaba	Conflict	70	161	1	0.0%	70	160	1
West Arsi	Dodola	Conflict	38	108	1	0.0%	38	106	1
West Arsi	Gedeb Asasa	Conflict	102	490	2	0.0%	102	463	2
West Arsi	Kofele	Conflict	29	113	1	0.0%	29	112	1
West Arsi	Shalla	Climate Induced	229	1,963	7	0.0%	229	1,721	7
West Arsi	Shalla	Conflict	24	65	1	0.0%	24	64	1
West Arsi	Siraro	Conflict	3,088	22,076	10	+25.63%	2,458	17,656	4
West Arsi Total			3,580	24,976	23	+21.36%	2,950	20,282	17
West Guji	Abaya	Climate Induced	1,900	10,314	2	-25.69%	2,557	19,841	3
West Guji	Galana	Climate Induced	326	1,905	2	-13.30%	376	3,027	2
West Guji	Galana	Conflict	3,892	25,636	10	-2.87%	4,007	28,871	10
West Guji	Melka Soda	Climate Induced	2,812	18,519	5	+19.30%	2,357	16,567	5
West Guji	Melka Soda	Conflict	-	-	-	-100.00%	236	1,588	2
West Guji	Suro Barguda	Conflict	4,153	27,444	14	+54.90%	2,681	19,508	13
West Guji Total			13,083	83,818	33	+7.11%	12,214	89,402	35



DISPLACEMENT TRACKING MATRIX (DTM) OROMIA REGION, ETHIOPIA

ROUND 16: March/April 2019

Zone	Woreda	Displacement Reason	Round 16			% change in estimated # of HHs	Round 15		
			HHs	Individuals	Sites		HHs	Individuals	Sites
West Harerge	Bordode	Conflict	2,942	17,883	10	0.0%	2,942	16,467	10
West Harerge	Chiro Zuria	Conflict	41	41	1	0.0%	41	41	1
West Harerge	Daro Lebu	Conflict	1,050	6,091	6	+1.74%	1,032	5,453	6
West Harerge	Doba	Conflict	725	3,726	5	+0.42%	722	3,491	5
West Harerge	Gemechis	Conflict	32	83	1	0.0%	32	85	1
West Harerge	Habro	Conflict	87	348	1	+1.16%	86	318	1
West Harerge	Hawi Gudina	Conflict	476	2,832	2	0.0%	476	2,700	2
West Harerge	Mesela	Conflict	311	1,182	1	0.0%	311	1,166	1
West Harerge	Mieso	Conflict	5,057	29,300	13	+6.35%	4,755	26,703	13
West Harerge	Tulo	Conflict	159	606	1	0.0%	159	582	1
West Harerge Total			10,880	62,092	41	+3.07%	10,556	57,006	41
West Shewa	Ambo Zuria	Conflict	45	138	1	0.0%	45	138	1
West Shewa	Dendi	Conflict	32	74	1	0.0%	32	74	1
West Shewa	Jeldu	Conflict	60	148	1	0.0%	60	148	1
West Shewa Total			137	360	3	0.0%	137	360	3
		Climate Induced Sum	16,769	111,102	49	+6.67%	15,721	114,935	45
		Conflict Sum	116,523	674,209	392	-2.84%	119,926	694,697	405
		Other Sum	11,024	67,262	22	+33.54%	8,255	49,658	22
Grand Total			144,316	852,573	463	+0.29%	143,902	859,290	472



DISPLACEMENT TRACKING MATRIX (DTM) OROMIA REGION, ETHIOPIA

ROUND 16: March/April 2019

ABOUT DTM

DTM GLOBAL

The Displacement Tracking Matrix (DTM) is a system to track and monitor displacement and population mobility. It is designed to regularly and systematically capture, process and disseminate information to provide a better understanding of the movements and evolving needs of displaced populations, whether on site or en route. More information is available at www.globaldtm.info.

DTM IN ETHIOPIA

In Ethiopia, data is collected at zone, woreda and site level. Since September 2016, sixteen rounds of assessments have been completed. The DTM programme is implemented in close collaboration with the National Disaster Risk Management Commission, regional, zonal and woreda counterparts and DTMs implementing partner, the Danish Refugee Council (DRC).

METHODOLOGY

IOM's DTM team composed of enumerators from IOM and DRC were deployed across the country to collect the data. The process involved the following steps:

Zone level: Interviews with key informants from

the Disaster Prevention and Preparedness Office (DPPO), community representatives, and the education and health offices collect information including (among others) estimated caseload of displaced population, identification of woredas within the zone that host displaced populations, reason for displacement, time of arrival of IDPs and location of origin.

Woreda level: Information is collected from key woreda informants and includes (among others) estimated length of stay, number of displaced households and individuals at woreda level, displaced population by type of temporary settlements and approximate locations of identifiable displacement sites. The information is used to plan site assessments.

Site assessments: In-depth IDP site assessments capture detailed information through key informant interviews, direct observation and focus group discussions with male, female, elderly, children and IDP representatives. Data on available services by sector, accessibility constraints, exact type, location and name of the site, place of origin of IDPs, estimated size and type of the site and most common type of shelter are captured. Age and gender disaggregation for the site is extrapolated using a demographic calculator

tool based on the age range and sex of the household members of 20 randomly selected households from the site.

For more information please visit our website, www.displacement.iom.int or contact us at dtmethiopia@iom.int



Humanitarian Aid
and Civil Protection





International Organization for Migration (IOM)
The UN Migration Agency

ANNEX I : INTERNAL DISPLACEMENTS IN OROMIA REGION AS OF MARCH/APRIL 2019

Zone	Woreda	Sex	Age Groups					Total	HHs	Site Open Date	Cause	Duration
			Infants (0-4 y)	Children (5-14 y)	Youth (15-17 y)	Adults (18-59 y)	Elderly (60 +y)					
Arsi	Amigna	Female	10	20	4	26	-	60	41	18-Sep-17	Conflict	Before 2018
Arsi	Amigna	Male	12	16	5	38	-	71				
Arsi	Aseko	Female	6	4	3	14	-	27	22	16-Sep-17	Conflict	Before 2018
Arsi	Aseko	Male	9	9	7	18	-	43				
Arsi	Bele Gesgar	Female	10	13	3	16	-	42	30	20-Sep-17	Conflict	Before 2018
Arsi	Bele Gesgar	Male	13	11	5	30	2	61				
Arsi	Degeluna Tijo	Female	16	10	2	32	-	60	39	19-Sep-17	Conflict	Before 2018
Arsi	Degeluna Tijo	Male	19	9	-	34	-	62				
Arsi	Diksis	Female	4	3	2	15	-	24	21	19-Sep-17	Conflict	Before 2018
Arsi	Diksis	Male	7	4	-	19	-	30				
Arsi	Gololcha Arsi	Female	336	455	82	601	70	1,544	511	01-May-16	Flash Flood	Before 2018
Arsi	Gololcha Arsi	Male	269	421	184	563	72	1,509				
Arsi	Gololcha Arsi	Female	13	10	-	23	-	46	31	18-Sep-17	Conflict	Before 2018
Arsi	Gololcha Arsi	Male	7	16	-	27	1	51				
Arsi	Hitosa	Female	6	1	4	21	-	32	25	21-Sep-17	Conflict	Before 2018
Arsi	Hitosa	Male	6	5	6	25	-	42				
Arsi	Jeju	Female	1	6	-	18	-	25	25	19-Sep-17	Conflict	Before 2018
Arsi	Jeju	Male	5	1	-	28	1	35				
Arsi	Merti	Female	7	20	3	18	-	48	24	13-Sep-17	Conflict	Before 2018
Arsi	Merti	Male	4	25	2	38	-	69				
Arsi	Munessa	Female	3	4	-	8	-	15	20	19-Sep-17	Conflict	Before 2018
Arsi	Munessa	Male	2	5	-	18	-	25				
Arsi	Robe	Female	40	31	6	86	-	163	132	19-Sep-17	Conflict	Before 2018
Arsi	Robe	Male	32	35	7	125	-	199				
Arsi	Shirka	Female	43	25	6	98	-	172	206	17-Sep-17	Conflict	Before 2018
Arsi	Shirka	Male	57	20	4	187	-	268				
Arsi	Sude	Female	11	10	-	13	-	34	29	19-Sep-17	Conflict	Before 2018
Arsi	Sude	Male	12	7	2	28	-	49				
Arsi	Tena	Female	7	10	1	13	-	31	26	19-Sep-17	Conflict	Before 2018
Arsi	Tena	Male	7	4	-	28	-	39				
Arsi Total			974	1,210	338	2,208	146	4,876	1,182			
Bale	Agarfa	Female	17	9	21	48	1	96	36	16-Feb-18	Conflict	During 2018
Bale	Agarfa	Male	16	11	41	33	1	102				
Bale	Berbere	Female	862	825	1,125	2,213	375	5,400	1,500	16-Aug-18	Other	During 2018
Bale	Berbere	Male	825	713	1,088	2,213	450	5,289				
Bale	Dawe Kachen	Female	47	52	43	125	22	289	86	31-Dec-18	Conflict	During 2018
Bale	Dawe Kachen	Male	52	52	34	129	13	280				
Bale	Dawe Serar	Female	331	473	709	1,701	236	3,450	945	01-Jan-16	Conflict	Before 2018
Bale	Dawe Serar	Male	520	567	803	1,654	284	3,828				
Bale	Dawe Serar	Female	218	218	348	696	109	1,589	435	17-Oct-17	Conflict	Before 2018
Bale	Dawe Serar	Male	283	283	326	718	174	1,784				
Bale	Dawe Serar	Female	332	204	307	818	26	1,687	511	25-Nov-17	Conflict	Before 2018
Bale	Dawe Serar	Male	409	307	358	767	128	1,969				
Bale	Dawe Serar	Female	442	553	332	1,327	221	2,875	737	16-Dec-17	Conflict	Before 2018
Bale	Dawe Serar	Male	369	479	516	1,216	184	2,764				



International Organization for Migration (IOM)
The UN Migration Agency

ANNEX I : INTERNAL DISPLACEMENTS IN OROMIA REGION AS OF MARCH/APRIL 2019

Zone	Woreda	Sex	Age Groups					Total	HHs	Site Open Date	Cause	Duration
			Infants (0-4 y)	Children (5-14 y)	Youth (15-17 y)	Adults (18-59 y)	Elderly (60 +y)					
Bale	Dawe Serar	Female	524	524	762	1,858	238	3,906	953	21-Feb-18	Conflict	During 2018
Bale	Dawe Serar	Male	572	572	619	1,668	286	3,717				
Bale	Delo Mena	Female	692	609	747	1,633	277	3,958	1,107	28-Oct-16	Conflict	Before 2018
Bale	Delo Mena	Male	554	581	775	1,744	221	3,875				
Bale	Delo Mena	Female	4	4	17	70	2	97	33	28-Jan-18	Conflict	During 2018
Bale	Delo Mena	Male	7	6	21	49	3	86				
Bale	Gasera	Female	16	6	16	37	-	75	68	16-May-18	Conflict	During 2018
Bale	Gasera	Male	21	8	15	42	-	86				
Bale	Ginir	Female	16	28	48	183	-	275	155	15-May-18	Conflict	During 2018
Bale	Ginir	Male	15	26	46	190	4	281				
Bale	Goba	Female	3	1	2	13	-	19	24	13-Oct-17	Conflict	Before 2018
Bale	Goba	Male	3	2	4	24	2	35				
Bale	Gololcha Bale	Female	10	3	14	17	-	44	27	16-Mar-18	Conflict	During 2018
Bale	Gololcha Bale	Male	7	4	9	8	-	28				
Bale	Gura Damole	Female	148	124	185	432	49	938	247	07-Sep-17	Conflict	Before 2018
Bale	Gura Damole	Male	148	99	173	420	62	902				
Bale	Lege Hida	Female	2,595	2,595	2,499	5,670	865	14,224	3,844	12-Jan-17	Conflict	Before 2018
Bale	Lege Hida	Male	2,499	2,787	2,499	5,286	961	14,032				
Bale	Lege Hida	Female	443	739	591	1,675	148	3,596	985	21-Mar-17	Conflict	Before 2018
Bale	Lege Hida	Male	542	542	690	1,428	197	3,399				
Bale	Lege Hida	Female	6	8	15	68	1	98	71	16-May-18	Conflict	During 2018
Bale	Lege Hida	Male	9	7	11	74	-	101				
Bale	Meda Welabu	Female	362	302	663	1,447	181	2,955	1,206	06-Aug-17	Conflict	Before 2018
Bale	Meda Welabu	Male	302	302	724	1,447	302	3,077				
Bale	Meda Welabu	Female	439	519	799	1,079	200	3,036	799	18-Oct-17	Conflict	Before 2018
Bale	Meda Welabu	Male	320	400	679	1,039	240	2,678				
Bale	Meda Welabu	Female	437	510	474	948	182	2,551	729	23-Oct-17	Conflict	Before 2018
Bale	Meda Welabu	Male	510	292	510	1,057	182	2,551				
Bale	Meda Welabu	Female	8	7	3	29	1	48	42	16-Dec-17	Conflict	Before 2018
Bale	Meda Welabu	Male	9	4	2	50	4	69				
Bale	Meda Welabu	Female	158	347	315	693	95	1,608	630	22-Dec-17	Conflict	Before 2018
Bale	Meda Welabu	Male	252	284	221	662	126	1,545				
Bale	Meda Welabu	Female	143	229	172	715	143	1,402	572	28-Dec-17	Conflict	Before 2018
Bale	Meda Welabu	Male	172	229	229	686	143	1,459				



International Organization for Migration (IOM)
The UN Migration Agency

ANNEX I : INTERNAL DISPLACEMENTS IN OROMIA REGION AS OF MARCH/APRIL 2019

Zone	Woreda	Sex	Age Groups					Total	HHs	Site Open Date	Cause	Duration
			Infants (0-4 y)	Children (5-14 y)	Youth (15-17 y)	Adults (18-59 y)	Elderly (60 +y)					
Borena	Guchi	Female	814	1,052	509	1,391	271	4,037	1,357	07-Sep-16	Other	Before 2018
Borena	Guchi	Male	645	950	407	1,391	237	3,630				
Borena	Guchi	Female	2,349	2,429	860	2,753	330	8,721	2,865	12-Sep-16	Conflict	Before 2018
Borena	Guchi	Male	1,712	2,317	959	2,809	324	8,121				
Borena	Guchi	Female	1,524	2,032	826	2,477	381	7,240	2,540	23-Sep-16	Conflict	Before 2018
Borena	Guchi	Male	1,207	1,905	572	2,286	127	6,097				
Borena	Guchi	Female	737	836	246	983	98	2,900	983	02-Oct-16	Other	Before 2018
Borena	Guchi	Male	639	688	295	983	49	2,654				
Borena	Guchi	Female	264	345	102	386	81	1,178	406	06-Sep-17	Conflict	Before 2018
Borena	Guchi	Male	203	325	102	345	20	995				
Borena	Guchi	Female	42	67	14	74	18	215	70	08-Sep-17	Conflict	Before 2018
Borena	Guchi	Male	39	49	21	70	4	183				
Borena	Guchi	Female	20	40	20	50	8	138	50	09-Sep-17	Conflict	Before 2018
Borena	Guchi	Male	20	35	18	50	10	133				
Borena	Guchi	Female	486	583	130	616	65	1,880	648	16-Jan-18	Conflict	During 2018
Borena	Guchi	Male	454	551	324	583	65	1,977				
Borena	Guchi	Female	589	632	337	926	168	2,652	842	21-Feb-18	Conflict	During 2018
Borena	Guchi	Male	505	547	337	842	84	2,315				
Borena	Guchi	Female	79	100	47	116	63	405	105	25-Sep-18	Conflict	During 2018
Borena	Guchi	Male	63	74	26	105	37	305				
Borena	Moyale	Female	110	124	29	146	7	416	146	15-Jun-12	Conflict	Before 2018
Borena	Moyale	Male	80	102	37	139	7	365				
Borena	Moyale	Female	179	193	97	276	41	786	276	17-Oct-16	Other	Before 2018
Borena	Moyale	Male	138	166	55	248	14	621				
Borena	Moyale	Female	239	345	133	583	53	1,353	530	25-Nov-16	Other	Before 2018
Borena	Moyale	Male	186	318	159	610	186	1,459				
Borena	Moyale	Female	335	310	52	490	103	1,290	516	05-Dec-16	Conflict	Before 2018
Borena	Moyale	Male	258	232	232	593	52	1,367				
Borena	Moyale	Female	1,935	1,935	860	2,867	502	8,099	2,867	05-Jan-17	Other	Before 2018
Borena	Moyale	Male	1,577	2,007	1,075	2,795	502	7,956				
Borena	Moyale	Female	1,841	2,224	920	2,685	460	8,130	3,068	12-Dec-17	Conflict	Before 2018
Borena	Moyale	Male	1,611	2,148	997	2,991	307	8,054				
Borena	Moyale	Female	1,110	919	115	1,531	77	3,752	1,531	20-Dec-18	Conflict	During 2018
Borena	Moyale	Male	842	1,148	459	1,531	230	4,210				
Borena	Wachile	Female	423	544	211	604	60	1,842	604	14-Feb-17	Conflict	Before 2018
Borena	Wachile	Male	332	483	91	513	30	1,449				
Borena	Wachile	Female	834	1,051	247	1,143	124	3,399	1,236	22-Sep-17	Conflict	Before 2018
Borena	Wachile	Male	711	989	278	1,112	124	3,214				
Borena	Wachile	Female	553	423	195	683	65	1,919	650	12-Oct-17	Conflict	Before 2018
Borena	Wachile	Male	293	390	195	650	98	1,626				
Borena	Wachile	Female	84	119	35	133	7	378	140	16-Aug-18	Conflict	During 2018
Borena	Wachile	Male	77	91	28	140	21	357				
Borena Total			28,944	35,907	14,448	47,344	6,223	132,866	24,197			



International Organization for Migration (IOM)
The UN Migration Agency

ANNEX I : INTERNAL DISPLACEMENTS IN OROMIA REGION AS OF MARCH/APRIL 2019

Zone	Woreda	Sex	Age Groups					Total	HHs	Site Open Date	Cause	Duration
			Infants (0-4 y)	Children (5-14 y)	Youth (15-17 y)	Adults (18-59 y)	Elderly (60 +y)					
Bunno Bedele	Chwaka	Female	18	12	-	51	-	81	60	09-Feb-17	Conflict	Before 2018
Bunno Bedele	Chwaka	Male	15	3	3	54	-	75				
Bunno Bedele	Dedesa	Female	349	698	188	940	81	2,256	537	05-Apr-17	Other	Before 2018
Bunno Bedele	Dedesa	Male	322	698	188	752	81	2,041				
Bunno Bedele	Dedesa	Female	39	71	25	110	11	256	71	27-Jul-17	Other	Before 2018
Bunno Bedele	Dedesa	Male	36	71	21	75	11	214				
Bunno Bedele	Dedesa	Female	557	975	325	1,254	139	3,250	929	12-Jun-18	Other	During 2018
Bunno Bedele	Dedesa	Male	511	975	186	836	93	2,601				
Bunno Bedele	Dedesa	Female	25	43	18	70	5	161	50	11-Jul-18	Other	During 2018
Bunno Bedele	Dedesa	Male	28	43	20	48	8	147				
Bunno Bedele	Mako	Female	492	1,018	279	692	-	2,481	613	10-Apr-17	Other	Before 2018
Bunno Bedele	Mako	Male	425	789	402	613	-	2,229				
Bunno Bedele	Mako	Female	315	445	111	427	19	1,317	371	30-Apr-17	Other	Before 2018
Bunno Bedele	Mako	Male	278	557	186	371	-	1,392				
Bunno Bedele Total			3,410	6,398	1,952	6,293	448	18,501	2,631			
East Harerge	Babile	Female	436	634	396	793	40	2,299	904	10-Oct-15	Conflict	Before 2018
East Harerge	Babile	Male	595	555	357	714	-	2,221				
East Harerge	Babile	Female	5,219	3,938	2,082	7,765	47	19,051	7,396	15-Sep-17	Conflict	Before 2018
East Harerge	Babile	Male	4,386	4,103	2,454	7,404	32	18,379				
East Harerge	Babile	Female	12	13	7	23	-	55	22	16-Sep-17	Conflict	Before 2018
East Harerge	Babile	Male	11	9	7	23	-	50				
East Harerge	Babile	Female	202	163	84	316	6	771	312	05-Aug-18	Conflict	During 2018
East Harerge	Babile	Male	218	165	77	299	11	770				
East Harerge	Babile	Female	98	90	45	150	8	391	150	15-Sep-18	Conflict	During 2018
East Harerge	Babile	Male	90	68	45	150	-	353				
East Harerge	Bedenno	Female	10	18	5	23	-	56	23	12-Sep-17	Conflict	Before 2018
East Harerge	Bedenno	Male	9	17	5	22	-	53				
East Harerge	Bedenno	Female	43	65	18	89	-	215	89	18-Sep-17	Conflict	Before 2018
East Harerge	Bedenno	Male	31	71	21	91	-	214				
East Harerge	Chinaksen	Female	43	50	36	150	29	308	143	10-Mar-17	Conflict	Before 2018
East Harerge	Chinaksen	Male	57	79	57	164	14	371				
East Harerge	Chinaksen	Female	2,980	3,693	1,572	9,250	807	18,302	8,044	12-Sep-17	Conflict	Before 2018
East Harerge	Chinaksen	Male	2,714	3,041	2,272	9,255	924	18,206				
East Harerge	Chinaksen	Female	18	32	32	96	9	187	91	19-Sep-17	Conflict	Before 2018
East Harerge	Chinaksen	Male	27	18	14	96	5	160				
East Harerge	Chinaksen	Female	81	215	108	323	27	754	269	21-Sep-17	Conflict	Before 2018
East Harerge	Chinaksen	Male	94	135	67	350	13	659				
East Harerge	Chinaksen	Female	105	122	35	490	18	770	350	30-Sep-18	Conflict	During 2018
East Harerge	Chinaksen	Male	122	158	88	490	-	858				
East Harerge	Chinaksen	Female	78	102	97	371	28	676	289	20-Dec-18	Conflict	During 2018
East Harerge	Chinaksen	Male	104	127	125	398	41	795				
East Harerge	Deder	Female	46	82	51	189	28	396	188	16-Sep-17	Conflict	Before 2018
East Harerge	Deder	Male	101	122	32	176	30	461				
East Harerge	Deder	Female	631	558	410	1,360	122	3,081	1,285	18-Sep-17	Conflict	Before 2018
East Harerge	Deder	Male	511	386	318	1,280	169	2,664				
East Harerge	Deder	Female	59	48	16	112	11	246	107	15-Feb-18	Conflict	During 2018
East Harerge	Deder	Male	43	43	21	107	5	219				
East Harerge	Deder	Female	371	241	293	631	70	1,606	637	25-Feb-18	Conflict	During 2018
East Harerge	Deder	Male	327	149	229	607	134	1,446				



International Organization for Migration (IOM)
The UN Migration Agency

ANNEX I : INTERNAL DISPLACEMENTS IN OROMIA REGION AS OF MARCH/APRIL 2019

Zone	Woreda	Sex	Age Groups					Total	HHs	Site Open Date	Cause	Duration
			Infants (0-4 y)	Children (5-14 y)	Youth (15-17 y)	Adults (18-59 y)	Elderly (60 +y)					
East Harerge	Deder	Female	49	55	49	141	25	319				
East Harerge	Deder	Male	68	43	43	117	12	283	123	22-Mar-18	Conflict	During 2018
East Harerge	Deder	Female	30	52	13	82	4	181				
East Harerge	Deder	Male	43	39	22	86	9	199	86	18-May-18	Conflict	During 2018
East Harerge	Deder	Female	47	46	44	110	8	255				
East Harerge	Deder	Male	49	38	26	86	16	215	102	20-Aug-18	Conflict	During 2018
East Harerge	Fedis	Female	178	233	260	484	48	1,203				
East Harerge	Fedis	Male	130	194	236	475	39	1,074	484	15-Sep-17	Conflict	Before 2018
East Harerge	Fedis	Female	181	181	197	395	20	974				
East Harerge	Fedis	Male	153	150	158	395	29	885	404	16-Sep-17	Conflict	Before 2018
East Harerge	Fedis	Female	337	362	350	698	57	1,804				
East Harerge	Fedis	Male	257	279	302	698	70	1,606	698	17-Sep-17	Conflict	Before 2018
East Harerge	Fedis	Female	120	120	107	257	21	625				
East Harerge	Fedis	Male	103	112	77	244	13	549	257	18-Sep-17	Conflict	Before 2018
East Harerge	Fedis	Female	28	35	32	63	3	161				
East Harerge	Fedis	Male	22	28	28	60	3	141	63	19-Sep-17	Conflict	Before 2018
East Harerge	Gar Muti	Female	13	13	13	26	3	68				
East Harerge	Gar Muti	Male	12	10	10	23	1	56	26	13-Sep-17	Conflict	Before 2018
East Harerge	Gar Muti	Female	18	18	16	36	2	90				
East Harerge	Gar Muti	Male	16	14	16	36	2	84	36	14-Sep-17	Conflict	Before 2018
East Harerge	Gar Muti	Female	17	17	17	31	2	84				
East Harerge	Gar Muti	Male	13	15	15	31	2	76	33	23-Sep-17	Conflict	Before 2018
East Harerge	Gar Muti	Female	33	37	37	70	7	184				
East Harerge	Gar Muti	Male	33	33	37	67	7	177	74	26-Feb-18	Conflict	During 2018
East Harerge	Gar Muti	Female	14	18	14	32	3	81				
East Harerge	Gar Muti	Male	13	13	16	29	2	73	32	04-May-18	Conflict	During 2018
East Harerge	Girawa	Female	64	137	36	189	-	426				
East Harerge	Girawa	Male	60	149	32	167	2	410	184	18-Sep-17	Conflict	Before 2018
East Harerge	Golo Oda	Female	88	81	44	147	7	367				
East Harerge	Golo Oda	Male	81	66	44	140	-	331	147	16-Sep-17	Conflict	Before 2018
East Harerge	Goro Gutu	Female	270	283	345	612	55	1,565				
East Harerge	Goro Gutu	Male	227	269	324	583	50	1,453	623	15-Sep-17	Conflict	Before 2018
East Harerge	Goro Gutu	Female	43	55	74	123	6	301				
East Harerge	Goro Gutu	Male	37	43	62	117	12	271	123	02-Jun-18	Conflict	During 2018
East Harerge	Goro Gutu	Female	33	37	46	83	4	203				
East Harerge	Goro Gutu	Male	29	33	42	79	8	191	83	07-Jun-18	Conflict	During 2018
East Harerge	Goro Gutu	Female	8	11	15	25	1	60				
East Harerge	Goro Gutu	Male	8	10	11	24	1	54	25	29-Oct-18	Conflict	During 2018
East Harerge	Goro Gutu	Female	49	58	49	92	15	263				
East Harerge	Goro Gutu	Male	44	49	34	92	15	234	97	23-Dec-18	Conflict	During 2018
East Harerge	Gursum	Female	119	99	59	208	-	485				
East Harerge	Gursum	Male	99	99	69	178	-	445	198	12-Sep-17	Conflict	Before 2018
East Harerge	Gursum	Female	664	743	356	1,178	4	2,945				
East Harerge	Gursum	Male	642	668	421	1,152	52	2,935	1,126	13-Sep-17	Conflict	Before 2018
East Harerge	Gursum	Female	35	32	18	74	-	159				
East Harerge	Gursum	Male	28	28	25	70	-	151	70	15-Sep-17	Conflict	Before 2018
East Harerge	Gursum	Female	696	596	384	1,294	41	3,011				
East Harerge	Gursum	Male	584	558	396	1,225	21	2,784	1,250	16-Sep-17	Conflict	Before 2018
East Harerge	Gursum	Female	42	35	19	74	-	170				
East Harerge	Gursum	Male	29	27	21	69	-	146	71	17-Sep-17	Conflict	Before 2018



ANNEX I : INTERNAL DISPLACEMENTS IN OROMIA REGION AS OF MARCH/APRIL 2019

Zone	Woreda	Sex	Age Groups					Total	HHs	Site Open Date	Cause	Duration
			Infants (0-4 y)	Children (5-14 y)	Youth (15-17 y)	Adults (18-59 y)	Elderly (60 +y)					
East Harerge	Gursum	Female	14	14	6	28	-	62	28	18-Sep-17	Conflict	Before 2018
East Harerge	Gursum	Male	14	15	8	27	-	64				
East Harerge	Gursum	Female	21	19	8	42	2	92	38	19-Sep-17	Conflict	Before 2018
East Harerge	Gursum	Male	17	19	15	38	-	89				
East Harerge	Haro Maya	Female	50	50	43	91	8	242	96	14-Sep-17	Conflict	Before 2018
East Harerge	Haro Maya	Male	40	36	43	87	10	216				
East Harerge	Haro Maya	Female	59	65	70	122	13	329	129	16-Sep-17	Conflict	Before 2018
East Harerge	Haro Maya	Male	52	56	58	116	10	292				
East Harerge	Haro Maya	Female	20	25	28	56	3	132	56	17-Sep-17	Conflict	Before 2018
East Harerge	Haro Maya	Male	14	22	28	50	6	120				
East Harerge	Haro Maya	Female	29	29	26	58	6	148	58	18-Sep-17	Conflict	Before 2018
East Harerge	Haro Maya	Male	26	20	20	55	6	127				
East Harerge	Haro Maya	Female	32	36	43	71	4	186	71	03-Apr-18	Conflict	During 2018
East Harerge	Haro Maya	Male	28	28	39	67	7	169				
East Harerge	Haro Maya	Female	33	42	47	94	9	225	94	04-Apr-18	Conflict	During 2018
East Harerge	Haro Maya	Male	33	33	42	89	9	206				
East Harerge	Haro Maya	Female	19	16	19	50	3	107	62	02-Jul-18	Conflict	During 2018
East Harerge	Haro Maya	Male	12	16	16	47	3	94				
East Harerge	Jarso	Female	781	1,261	570	2,097	90	4,799	1,901	12-Sep-17	Conflict	Before 2018
East Harerge	Jarso	Male	756	1,245	634	1,901	336	4,872				
East Harerge	Jarso	Female	221	664	266	974	89	2,214	885	14-Sep-17	Conflict	Before 2018
East Harerge	Jarso	Male	266	575	266	841	133	2,081				
East Harerge	Jarso	Female	59	85	39	144	-	327	131	14-Jul-18	Conflict	During 2018
East Harerge	Jarso	Male	46	79	46	131	20	322				
East Harerge	Kersa	Female	277	431	123	647	-	1,478	616	18-Sep-17	Conflict	Before 2018
East Harerge	Kersa	Male	216	493	92	616	31	1,448				
East Harerge	Kombolcha	Female	17	25	6	53	-	101	56	12-Sep-17	Conflict	Before 2018
East Harerge	Kombolcha	Male	22	28	11	48	-	109				
East Harerge	Kombolcha	Female	6	6	3	20	-	35	21	27-Aug-18	Conflict	During 2018
East Harerge	Kombolcha	Male	7	9	4	19	-	39				
East Harerge	Kombolcha	Female	9	10	3	22	-	44	22	06-Sep-18	Conflict	During 2018
East Harerge	Kombolcha	Male	8	7	3	20	-	38				
East Harerge	Kumbi	Female	772	692	533	1,118	27	3,142	1,065	03-Mar-15	Conflict	Before 2018
East Harerge	Kumbi	Male	666	692	533	1,092	53	3,036				
East Harerge	Kumbi	Female	4,385	3,922	2,559	6,571	197	17,634	6,177	15-Mar-15	Conflict	Before 2018
East Harerge	Kumbi	Male	3,563	3,834	2,851	6,267	199	16,714				
East Harerge	Kurfa Chele	Female	34	41	14	71	-	160	68	24-Aug-18	Conflict	During 2018
East Harerge	Kurfa Chele	Male	27	20	24	58	3	132				
East Harerge	Malka Balo	Female	33	34	49	79	8	203	80	16-Sep-17	Conflict	Before 2018
East Harerge	Malka Balo	Male	26	27	42	75	5	175				
East Harerge	Malka Balo	Female	54	65	78	143	11	351	146	18-Sep-17	Conflict	Before 2018
East Harerge	Malka Balo	Male	44	56	64	140	10	314				
East Harerge	Meta	Female	211	359	148	506	42	1,266	422	14-Sep-17	Conflict	Before 2018
East Harerge	Meta	Male	190	359	106	485	84	1,224				
East Harerge	Meta	Female	177	433	118	453	20	1,201	394	15-Sep-17	Conflict	Before 2018
East Harerge	Meta	Male	138	394	118	433	79	1,162				
East Harerge	Meta	Female	65	164	44	218	11	502	218	18-Sep-17	Conflict	Before 2018
East Harerge	Meta	Male	76	164	44	185	11	480				
East Harerge	Meta	Female	59	132	29	147	15	382	147	18-Dec-18	Conflict	During 2018
East Harerge	Meta	Male	44	154	51	147	29	425				



International Organization for Migration (IOM)
The UN Migration Agency

ANNEX I : INTERNAL DISPLACEMENTS IN OROMIA REGION AS OF MARCH/APRIL 2019

Zone	Woreda	Sex	Age Groups					Total	HHs	Site Open Date	Cause	Duration
			Infants (0-4 y)	Children (5-14 y)	Youth (15-17 y)	Adults (18-59 y)	Elderly (60 +y)					
East Harerge	Meyu Muluke	Female	1,979	3,609	1,746	5,472	931	13,737				
East Harerge	Meyu Muluke	Male	2,212	3,493	1,746	4,890	1,048	13,389	4,657	06-Apr-16	Conflict	Before 2018
East Harerge	Meyu Muluke	Female	375	691	144	1,627	91	2,928				
East Harerge	Meyu Muluke	Male	296	583	178	1,412	103	2,572	1,100	16-May-16	Conflict	Before 2018
East Harerge	Meyu Muluke	Female	34	86	23	114	-	257				
East Harerge	Meyu Muluke	Male	46	97	23	108	6	280	114	12-Sep-17	Conflict	Before 2018
East Harerge	Midlega Tola	Female	108	192	99	306	6	711				
East Harerge	Midlega Tola	Male	104	188	98	300	8	698	195	15-Dec-09	Conflict	Before 2018
East Harerge	Midlega Tola	Female	594	713	594	1,158	119	3,178				
East Harerge	Midlega Tola	Male	475	624	624	1,099	89	2,911	1,188	08-Jun-16	Conflict	Before 2018
East Harerge	Midlega Tola	Female	62	71	51	119	8	311				
East Harerge	Midlega Tola	Male	56	60	58	117	8	299	123	14-Sep-17	Conflict	Before 2018
East Harerge	Midlega Tola	Female	46	62	46	103	5	262				
East Harerge	Midlega Tola	Male	41	46	52	103	5	247	103	15-Sep-17	Conflict	Before 2018
East Harerge	Midlega Tola	Female	93	134	84	207	21	539				
East Harerge	Midlega Tola	Male	73	84	119	196	19	491	207	16-Sep-17	Conflict	Before 2018
East Harerge	Midlega Tola	Female	14	10	10	20	2	56				
East Harerge	Midlega Tola	Male	10	10	8	21	1	50	22	17-Sep-17	Conflict	Before 2018
East Harerge	Midlega Tola	Female	13	14	13	28	3	71				
East Harerge	Midlega Tola	Male	11	13	13	28	3	68	28	19-Sep-17	Conflict	Before 2018
East Harerge Total			46,238	53,412	32,296	100,861	7,408	240,215	47,432			
East Shewa	Fentale	Female	54	107	119	89	24	393				
East Shewa	Fentale	Male	60	71	77	83	18	309	119	06-May-14	Seasonal Flood	Before 2018
East Shewa Total			114	178	196	172	42	702	119			
East Wellega	Diga	Female	719	1,293	383	1,006	96	3,497				
East Wellega	Diga	Male	623	1,054	431	1,150	96	3,354	958	10-Dec-09	Drought	Before 2018
East Wellega	Diga	Female	751	1,127	470	1,033	94	3,475				
East Wellega	Diga	Male	610	1,127	516	1,033	47	3,333	939	30-Dec-09	Drought	Before 2018
East Wellega	Sasiga	Female	619	707	398	1,282	177	3,183				
East Wellega	Sasiga	Male	442	619	398	972	133	2,564	884	13-Mar-03	Drought	Before 2018
East Wellega	Sasiga	Female	266	304	171	475	38	1,254				
East Wellega	Sasiga	Male	285	342	133	285	95	1,140	380	29-Mar-03	Drought	Before 2018
East Wellega	Sasiga	Female	143	214	83	369	36	845				
East Wellega	Sasiga	Male	143	179	107	250	36	715	238	12-Oct-09	Drought	Before 2018
East Wellega	Sasiga	Female	274	371	137	489	78	1,349				
East Wellega	Sasiga	Male	254	332	137	352	78	1,153	391	29-Dec-09	Drought	Before 2018
East Wellega	Sasiga	Female	165	224	94	366	47	896				
East Wellega	Sasiga	Male	153	177	118	224	35	707	236	11-Jan-10	Drought	Before 2018
East Wellega	Sasiga	Female	231	248	89	497	53	1,118				
East Wellega	Sasiga	Male	213	231	89	337	53	923	355	22-Feb-10	Drought	Before 2018
East Wellega	Sasiga	Female	252	458	137	664	69	1,580				
East Wellega	Sasiga	Male	275	298	160	504	92	1,329	458	30-Oct-13	Drought	Before 2018
East Wellega Total			6,418	9,305	4,051	11,288	1,353	32,415	4,839			



International Organization for Migration (IOM)
The UN Migration Agency

ANNEX I : INTERNAL DISPLACEMENTS IN OROMIA REGION AS OF MARCH/APRIL 2019

Zone	Woreda	Sex	Age Groups					Total	HHs	Site Open Date	Cause	Duration
			Infants (0-4 y)	Children (5-14 y)	Youth (15-17 y)	Adults (18-59 y)	Elderly (60 +y)					
Guji	Girja (Harenfema)	Female	99	46	15	76	-	236	76	10-Nov-16	Other	Before 2018
Guji	Girja (Harenfema)	Male	57	61	11	61	-	190				
Guji	Goro Dola	Female	176	114	62	185	-	537	176	01-Nov-17	Conflict	Before 2018
Guji	Goro Dola	Male	97	141	62	132	18	450				
Guji	Goro Dola	Female	23	25	5	23	-	76	23	01-Nov-18	Conflict	During 2018
Guji	Goro Dola	Male	17	18	9	21	1	66				
Guji	Gumi-Eldelo	Female	275	213	113	250	13	864	250	10-Nov-16	Conflict	Before 2018
Guji	Gumi-Eldelo	Male	263	250	50	200	25	788				
Guji	Gumi-Eldelo	Female	713	684	171	570	57	2,195	570	10-Jan-17	Conflict	Before 2018
Guji	Gumi-Eldelo	Male	570	570	200	485	86	1,911				
Guji	Gumi-Eldelo	Female	409	436	249	443	34	1,571	430	10-Apr-17	Conflict	Before 2018
Guji	Gumi-Eldelo	Male	375	663	147	332	40	1,557				
Guji	Gumi-Eldelo	Female	442	425	153	357	34	1,411	340	15-Sep-17	Conflict	Before 2018
Guji	Gumi-Eldelo	Male	323	544	170	306	34	1,377				
Guji	Gumi-Eldelo	Female	720	750	270	600	30	2,370	600	15-Oct-17	Conflict	Before 2018
Guji	Gumi-Eldelo	Male	630	720	300	450	60	2,160				
Guji	Gumi-Eldelo	Female	554	603	193	530	24	1,904	482	20-Jan-18	Conflict	During 2018
Guji	Gumi-Eldelo	Male	410	482	169	410	48	1,519				
Guji	Gumi-Eldelo	Female	672	412	216	588	28	1,916	560	15-Feb-18	Conflict	During 2018
Guji	Gumi-Eldelo	Male	600	752	144	492	84	2,072				
Guji	Gumi-Eldelo	Female	604	604	184	525	26	1,943	525	20-Feb-18	Conflict	During 2018
Guji	Gumi-Eldelo	Male	499	683	184	420	53	1,839				
Guji	Gumi-Eldelo	Female	594	594	176	462	22	1,848	440	12-Mar-18	Conflict	During 2018
Guji	Gumi-Eldelo	Male	506	484	220	374	44	1,628				
Guji	Gumi-Eldelo	Female	385	473	140	385	35	1,418	350	15-Aug-18	Conflict	During 2018
Guji	Gumi-Eldelo	Male	280	473	193	280	35	1,261				
Guji	Gumi-Eldelo	Female	600	625	150	550	25	1,950	500	20-Aug-18	Conflict	During 2018
Guji	Gumi-Eldelo	Male	500	625	250	450	75	1,900				
Guji	Gumi-Eldelo	Female	183	191	70	174	9	627	174	11-Mar-19	Conflict	In 2019
Guji	Gumi-Eldelo	Male	183	218	61	157	17	636				
Guji	Liben	Female	74	57	13	83	-	227	87	10-Dec-16	Drought	Before 2018
Guji	Liben	Male	44	74	17	87	-	222				
Guji	Liben	Female	134	112	56	112	-	414	112	15-Jan-17	Drought	Before 2018
Guji	Liben	Male	95	140	34	84	11	364				
Guji	Liben	Female	1,051	1,617	620	1,078	81	4,447	1,078	11-Apr-17	Conflict	Before 2018
Guji	Liben	Male	1,132	1,509	377	889	162	4,069				
Guji	Liben	Female	378	462	210	420	21	1,491	420	13-Apr-17	Conflict	Before 2018
Guji	Liben	Male	567	504	189	336	21	1,617				
Guji	Liben	Female	386	384	149	359	18	1,296	350	15-Sep-17	Conflict	Before 2018
Guji	Liben	Male	306	446	122	289	27	1,190				
Guji	Liben	Female	34	45	11	50	-	140	56	25-Oct-17	Conflict	Before 2018
Guji	Liben	Male	53	22	14	56	3	148				
Guji	Liben	Female	180	90	54	171	-	495	180	10-Feb-18	Conflict	During 2018
Guji	Liben	Male	108	171	27	171	9	486				
Guji	Liben	Female	244	180	64	221	-	709	228	15-Mar-18	Conflict	During 2018
Guji	Liben	Male	172	184	42	198	7	603				



International Organization for Migration (IOM)

The UN Migration Agency

ANNEX I : INTERNAL DISPLACEMENTS IN OROMIA REGION AS OF MARCH/APRIL 2019

Zone	Woreda	Sex	Age Groups					Total	HHs	Site Open Date	Cause	Duration
			Infants (0-4 y)	Children (5-14 y)	Youth (15-17 y)	Adults (18-59 y)	Elderly (60 +y)					
Guji	Liben	Female	540	306	162	360	18	1,386	360	10-Oct-18	Conflict	During 2018
Guji	Liben	Male	288	504	54	288	54	1,188				
Guji	Negele City Administration	Female	307	429	164	389	20	1,309	409	05-Oct-17	Conflict	Before 2018
Guji	Negele City Administration	Male	245	450	102	327	41	1,165				
Guji	Odo Shakiso	Female	166	181	83	166	-	596	151	25-Apr-18	Conflict	During 2018
Guji	Odo Shakiso	Male	113	189	76	128	15	521				
Guji	Saba Boru	Female	18	26	6	30	2	82	30	15-Jul-17	Other	Before 2018
Guji	Saba Boru	Male	27	24	5	23	3	82				
Guji Total			18,421	20,985	6,988	16,603	1,470	64,467	8,957			
Jimma	Botor Tollay	Female	236	112	20	402	25	795	402	05-Jan-06	Drought	Before 2018
Jimma	Botor Tollay	Male	201	171	35	336	46	789				
Jimma	Botor Tollay	Female	92	110	18	192	18	430	183	05-Mar-06	Drought	Before 2018
Jimma	Botor Tollay	Male	73	119	9	146	27	374				
Jimma	Botor Tollay	Female	189	203	54	297	-	743	270	01-May-06	Drought	Before 2018
Jimma	Botor Tollay	Male	203	162	54	270	27	716				
Jimma	Botor Tollay	Female	177	191	55	259	27	709	273	02-May-06	Drought	Before 2018
Jimma	Botor Tollay	Male	150	177	55	232	41	655				
Jimma	Botor Tollay	Female	52	41	5	113	10	221	103	03-May-06	Drought	Before 2018
Jimma	Botor Tollay	Male	46	52	5	88	15	206				
Jimma	Kersa	Female	22	16	2	26	2	68	31	26-Mar-99	Other	Before 2018
Jimma	Kersa	Male	19	14	5	26	2	66				
Jimma	Kersa	Female	34	42	5	53	5	139	53	03-Feb-00	Other	Before 2018
Jimma	Kersa	Male	29	37	3	40	8	117				
Jimma	Kersa	Female	73	73	17	113	11	287	113	19-Feb-00	Other	Before 2018
Jimma	Kersa	Male	57	79	6	90	23	255				
Jimma	Kersa	Female	124	143	29	191	19	506	191	28-Feb-00	Other	Before 2018
Jimma	Kersa	Male	124	143	10	153	19	449				
Jimma	Kersa	Female	73	92	12	122	18	317	122	31-Mar-00	Other	Before 2018
Jimma	Kersa	Male	73	73	12	92	24	274				
Jimma	Kersa	Female	154	144	31	205	31	565	205	22-Apr-00	Other	Before 2018
Jimma	Kersa	Male	103	133	31	164	51	482				
Jimma	Kersa	Female	101	89	18	125	6	339	119	05-May-00	Other	Before 2018
Jimma	Kersa	Male	83	65	18	101	12	279				
Jimma	Shebe Sambo	Female	19	28	9	49	5	110	25	27-Jul-16	Landslide	Before 2018
Jimma	Shebe Sambo	Male	14	40	12	51	7	124				
Jimma	Sigmo	Female	8	7	-	23	-	38	27	28-Sep-17	Conflict	Before 2018
Jimma	Sigmo	Male	14	4	-	19	-	37				
Jimma Total			2,543	2,560	530	3,978	479	10,090	2,117			
Kelem Wellega	Anfilo	Female	513	806	403	953	73	2,748	733	20-May-14	Drought	Before 2018
Kelem Wellega	Anfilo	Male	440	843	293	1,209	183	2,968				
Kelem Wellega	Anfilo	Female	1,200	2,080	858	2,572	343	7,053	1,714	05-Aug-14	Drought	Before 2018
Kelem Wellega	Anfilo	Male	1,029	1,948	1,249	2,512	379	7,117				
Kelem Wellega	Dale Sadi	Female	204	642	234	876	117	2,073	584	16-Apr-03	Drought	Before 2018
Kelem Wellega	Dale Sadi	Male	292	672	204	847	146	2,161				
Kelem Wellega	Dale Sadi	Female	884	884	626	1,032	111	3,537	737	19-Apr-03	Drought	Before 2018
Kelem Wellega	Dale Sadi	Male	700	553	626	921	147	2,947				
Kelem Wellega	Dale Sadi	Female	-	2	-	4	-	6	20	30-Sep-17	Conflict	Before 2018
Kelem Wellega	Dale Sadi	Male	1	1	1	19	-	22				
Kelem Wellega Total			5,263	8,431	4,494	10,945	1,499	30,632	3,788			



International Organization for Migration (IOM)

The UN Migration Agency

ANNEX I : INTERNAL DISPLACEMENTS IN OROMIA REGION AS OF MARCH/APRIL 2019

Zone	Woreda	Sex	Age Groups					Total	HHs	Site Open Date	Cause	Duration
			Infants (0-4 y)	Children (5-14 y)	Youth (15-17 y)	Adults (18-59 y)	Elderly (60 +y)					
North Shewa (R4)	Hidabu Abote	Female	4	5	4	7	-	20	20	10-May-18	Conflict	During 2018
North Shewa (R4)	Hidabu Abote	Male	1	2	3	14	-	20				
North Shewa (R4)	Kuyu	Female	3	7	10	15	-	35	40	23-Sep-17	Conflict	Before 2018
North Shewa (R4)	Kuyu	Male	5	7	16	25	-	53				
North Shewa (R4) Total			13	21	33	61	-	128	60			
South West Shewa	Waliso Town	Female	3	9	9	28	-	49	32	16-Sep-17	Conflict	Before 2018
South West Shewa	Waliso Town	Male	8	12	11	32	1	64				
South West Shewa	Wenchi	Female	3	5	3	12	-	23	31	19-Sep-17	Conflict	Before 2018
South West Shewa	Wenchi	Male	4	5	5	29	-	43				
South West Shewa Total			18	31	28	101	1	179	63			
West Arsi	Adaba	Female	14	8	-	31	-	53	70	21-Sep-17	Conflict	Before 2018
West Arsi	Adaba	Male	17	19	2	70	-	108				
West Arsi	Dodola	Female	15	5	2	22	-	44	38	12-Oct-17	Conflict	Before 2018
West Arsi	Dodola	Male	17	8	-	39	-	64				
West Arsi	Gedeb Asasa	Female	21	33	9	61	9	133	47	07-Mar-16	Conflict	Before 2018
West Arsi	Gedeb Asasa	Male	14	66	24	66	9	179				
West Arsi	Gedeb Asasa	Female	15	16	2	47	-	80	55	17-Sep-17	Conflict	Before 2018
West Arsi	Gedeb Asasa	Male	26	20	-	52	-	98				
West Arsi	Kofele	Female	8	9	14	28	-	59	29	18-Sep-17	Conflict	Before 2018
West Arsi	Kofele	Male	7	7	12	28	-	54				
West Arsi	Shalla	Female	60	86	24	14	8	192	48	15-May-17	Seasonal Flood	Before 2018
West Arsi	Shalla	Male	15	18	9	54	80	176				
West Arsi	Shalla	Female	25	37	20	6	5	93	20	03-Jul-17	Seasonal Flood	Before 2018
West Arsi	Shalla	Male	18	8	7	23	37	93				
West Arsi	Shalla	Female	77	100	65	36	17	295	73	09-Jul-17	Flash Flood	Before 2018
West Arsi	Shalla	Male	80	35	23	84	85	307				
West Arsi	Shalla	Female	66	43	32	9	8	158	33	25-Jul-17	Flash Flood	Before 2018
West Arsi	Shalla	Male	39	10	8	74	47	178				
West Arsi	Shalla	Female	4	3	2	19	-	28	24	22-Nov-17	Conflict	Before 2018
West Arsi	Shalla	Male	7	1	2	27	-	37				
West Arsi	Shalla	Female	30	32	20	6	8	96	27	14-Jun-18	Flash Flood	During 2018
West Arsi	Shalla	Male	28	4	7	27	39	105				
West Arsi	Shalla	Female	32	43	19	24	8	126	28	05-Sep-18	Flash Flood	During 2018
West Arsi	Shalla	Male	24	21	13	45	41	144				
West Arsi	Siraro	Female	44	114	79	111	27	375	162	15-Mar-16	Conflict	Before 2018
West Arsi	Siraro	Male	48	136	89	159	39	471				
West Arsi	Siraro	Female	1,302	2,964	1,029	2,856	576	8,727	2,300	18-Nov-18	Conflict	During 2018
West Arsi	Siraro	Male	1,380	2,578	987	2,554	418	7,917				
West Arsi	Siraro	Female	436	863	384	637	71	2,391	626	22-Feb-19	Conflict	In 2019
West Arsi	Siraro	Male	519	836	229	529	82	2,195				
West Arsi Total			4,388	8,123	3,113	7,738	1,614	24,976	3,580			



International Organization for Migration (IOM)
The UN Migration Agency

ANNEX I : INTERNAL DISPLACEMENTS IN OROMIA REGION AS OF MARCH/APRIL 2019

Zone	Woreda	Sex	Age Groups					Total	HHs	Site Open Date	Cause	Duration
			Infants (0-4 y)	Children (5-14 y)	Youth (15-17 y)	Adults (18-59 y)	Elderly (60 +y)					
West Guji	Abaya	Female	808	475	95	950	143	2,471				
West Guji	Abaya	Male	570	808	333	998	143	2,852	950	13-Dec-17	Drought	Before 2018
West Guji	Abaya	Female	903	570	95	903	95	2,566				
West Guji	Abaya	Male	618	523	48	1,093	143	2,425	950	26-May-18	Seasonal Flood	During 2018
West Guji	Galana	Female	694	1,081	375	1,102	189	3,441				
West Guji	Galana	Male	916	1,323	496	1,057	129	3,921	1,065	06-Jun-17	Conflict	Before 2018
West Guji	Galana	Female	60	175	80	150	10	475				
West Guji	Galana	Male	100	120	55	130	10	415	100	08-Jun-17	Conflict	Before 2018
West Guji	Galana	Female	126	174	144	102	18	564				
West Guji	Galana	Male	138	186	186	114	12	636	120	10-Jun-17	Conflict	Before 2018
West Guji	Galana	Female	311	270	145	457	42	1,225				
West Guji	Galana	Male	228	374	208	436	42	1,288	415	14-Jun-17	Conflict	Before 2018
West Guji	Galana	Female	70	50	20	100	10	250				
West Guji	Galana	Male	75	80	30	115	10	310	100	17-Jul-17	Drought	Before 2018
West Guji	Galana	Female	260	400	80	480	40	1,260				
West Guji	Galana	Male	320	420	140	420	20	1,320	400	24-Jul-17	Conflict	Before 2018
West Guji	Galana	Female	574	534	316	772	99	2,295				
West Guji	Galana	Male	594	574	377	752	99	2,396	792	28-Aug-17	Conflict	Before 2018
West Guji	Galana	Female	124	181	57	226	11	599				
West Guji	Galana	Male	147	215	113	237	34	746	226	24-Jun-18	Seasonal Flood	During 2018
West Guji	Galana	Female	900	1,050	350	900	150	3,350				
West Guji	Galana	Male	650	950	400	950	100	3,050	1,000	28-Dec-18	Conflict	During 2018
West Guji	Melka Soda	Female	113	428	135	608	90	1,374				
West Guji	Melka Soda	Male	360	473	135	585	45	1,598	450	23-Oct-16	Drought	Before 2018
West Guji	Melka Soda	Female	368	391	230	483	138	1,610				
West Guji	Melka Soda	Male	391	322	207	460	92	1,472	460	03-Nov-16	Drought	Before 2018
West Guji	Melka Soda	Female	897	807	314	987	45	3,050				
West Guji	Melka Soda	Male	538	583	269	1,032	45	2,467	897	05-Nov-16	Drought	Before 2018
West Guji	Melka Soda	Female	324	582	226	873	32	2,037				
West Guji	Melka Soda	Male	744	615	129	809	-	2,297	647	15-Nov-16	Drought	Before 2018
West Guji	Melka Soda	Female	304	215	179	358	72	1,128				
West Guji	Melka Soda	Male	304	376	215	412	179	1,486	358	22-Apr-17	Drought	Before 2018
West Guji	Suro Barguda	Female	220	500	260	440	60	1,480				
West Guji	Suro Barguda	Male	360	400	220	420	40	1,440	400	24-Jul-17	Conflict	Before 2018
West Guji	Suro Barguda	Female	380	401	211	443	63	1,498				
West Guji	Suro Barguda	Male	422	401	338	506	84	1,751	422	13-Sep-17	Conflict	Before 2018
West Guji	Suro Barguda	Female	1,093	734	344	1,234	164	3,569				
West Guji	Suro Barguda	Male	703	718	188	1,125	71	2,805	1,094	18-Sep-17	Conflict	Before 2018
West Guji	Suro Barguda	Female	258	419	81	403	16	1,177				
West Guji	Suro Barguda	Male	258	403	113	354	16	1,144	322	13-Oct-17	Conflict	Before 2018
West Guji	Suro Barguda	Female	275	275	92	476	37	1,155				
West Guji	Suro Barguda	Male	366	311	220	458	18	1,373	366	19-Dec-17	Conflict	Before 2018
West Guji	Suro Barguda	Female	50	25	35	105	15	230				
West Guji	Suro Barguda	Male	65	80	70	130	20	365	100	19-Mar-18	Conflict	During 2018
West Guji	Suro Barguda	Female	256	213	28	270	14	781				
West Guji	Suro Barguda	Male	185	199	14	256	14	668	284	15-Oct-18	Conflict	During 2018
West Guji	Suro Barguda	Female	153	137	64	177	8	539				
West Guji	Suro Barguda	Male	153	209	97	209	40	708	161	08-Nov-18	Conflict	During 2018
West Guji	Suro Barguda	Female	522	757	363	922	51	2,615				
West Guji	Suro Barguda	Male	892	708	368	927	92	2,987	838	14-Dec-18	Conflict	During 2018
West Guji	Suro Barguda	Female	145	128	70	181	22	546				
West Guji	Suro Barguda	Male	108	190	65	217	33	613	166	15-Dec-18	Conflict	During 2018
West Guji Total			20,393	22,533	9,423	28,304	3,165	83,818	13,083			



International Organization for Migration (IOM)
The UN Migration Agency

ANNEX I : INTERNAL DISPLACEMENTS IN OROMIA REGION AS OF MARCH/APRIL 2019

Zone	Woreda	Sex	Age Groups					Total	HHs	Site Open Date	Cause	Duration
			Infants (0-4 y)	Children (5-14 y)	Youth (15-17 y)	Adults (18-59 y)	Elderly (60 +y)					
West Harerge	Bordode	Female	126	227	76	277	38	744	252	27-Feb-17	Conflict	Before 2018
West Harerge	Bordode	Male	126	176	151	277	38	768				
West Harerge	Bordode	Female	147	157	78	196	29	607	196	09-Mar-17	Conflict	Before 2018
West Harerge	Bordode	Male	108	147	108	235	29	627				
West Harerge	Bordode	Female	464	619	295	884	126	2,388	842	14-Mar-17	Conflict	Before 2018
West Harerge	Bordode	Male	435	686	435	926	155	2,637				
West Harerge	Bordode	Female	220	256	201	366	55	1,098	366	24-Mar-17	Conflict	Before 2018
West Harerge	Bordode	Male	201	220	146	366	55	988				
West Harerge	Bordode	Female	295	341	194	482	46	1,358	466	27-Mar-17	Conflict	Before 2018
West Harerge	Bordode	Male	295	326	280	490	85	1,476				
West Harerge	Bordode	Female	108	237	97	215	32	689	215	01-Sep-17	Conflict	Before 2018
West Harerge	Bordode	Male	140	151	75	258	32	656				
West Harerge	Bordode	Female	21	29	17	36	6	109	38	16-Sep-17	Conflict	Before 2018
West Harerge	Bordode	Male	17	30	21	36	4	108				
West Harerge	Bordode	Female	340	454	312	652	85	1,843	567	12-Jul-18	Conflict	During 2018
West Harerge	Bordode	Male	284	482	284	624	113	1,787				
West Harerge	Chiro Zuria	Female	-	-	-	20	1	21	41	09-Sep-17	Conflict	Before 2018
West Harerge	Chiro Zuria	Male	-	-	-	19	1	20				
West Harerge	Daro Lebu	Female	19	17	9	37	2	84	43	16-Sep-17	Conflict	Before 2018
West Harerge	Daro Lebu	Male	15	24	13	30	-	82				
West Harerge	Daro Lebu	Female	51	59	30	85	4	229	85	10-Nov-17	Conflict	Before 2018
West Harerge	Daro Lebu	Male	43	68	38	72	9	230				
West Harerge	Daro Lebu	Female	130	130	74	194	28	556	185	13-Nov-17	Conflict	Before 2018
West Harerge	Daro Lebu	Male	120	167	83	194	28	592				
West Harerge	Daro Lebu	Female	167	167	100	211	22	667	222	11-Dec-17	Conflict	Before 2018
West Harerge	Daro Lebu	Male	133	167	111	222	33	666				
West Harerge	Daro Lebu	Female	234	234	126	360	36	990	360	22-Dec-17	Conflict	Before 2018
West Harerge	Daro Lebu	Male	216	288	198	378	54	1,134				
West Harerge	Daro Lebu	Female	101	116	39	147	16	419	155	11-Jul-18	Conflict	During 2018
West Harerge	Daro Lebu	Male	85	132	62	140	23	442				
West Harerge	Doba	Female	39	48	22	87	4	200	87	15-Sep-17	Conflict	Before 2018
West Harerge	Doba	Male	44	52	26	74	4	200				
West Harerge	Doba	Female	100	135	100	206	21	562	241	16-Sep-17	Conflict	Before 2018
West Harerge	Doba	Male	115	127	109	167	12	530				
West Harerge	Doba	Female	131	131	70	191	20	543	201	18-Sep-17	Conflict	Before 2018
West Harerge	Doba	Male	80	161	111	231	30	613				
West Harerge	Doba	Female	118	147	69	176	29	539	196	13-Apr-18	Conflict	During 2018
West Harerge	Doba	Male	108	137	98	176	20	539				
West Harerge	Gemechis	Female	8	6	3	26	-	43	32	02-Apr-18	Conflict	During 2018
West Harerge	Gemechis	Male	5	11	5	19	-	40				
West Harerge	Habro	Female	35	39	17	83	-	174	87	14-Nov-17	Conflict	Before 2018
West Harerge	Habro	Male	39	35	26	65	9	174				
West Harerge	Hawi Gudina	Female	338	271	180	474	45	1,308	451	12-Nov-17	Conflict	Before 2018
West Harerge	Hawi Gudina	Male	271	338	203	519	68	1,399				
West Harerge	Hawi Gudina	Female	13	13	8	24	1	59	25	03-Dec-17	Conflict	Before 2018
West Harerge	Hawi Gudina	Male	13	18	10	24	1	66				



International Organization for Migration (IOM)
The UN Migration Agency

ANNEX I : INTERNAL DISPLACEMENTS IN OROMIA REGION AS OF MARCH/APRIL 2019

Zone	Woreda	Sex	Age Groups					Total	HHs	Site Open Date	Cause	Duration
			Infants (0-4 y)	Children (5-14 y)	Youth (15-17 y)	Adults (18-59 y)	Elderly (60 +y)					
West Harerge	Mesela	Female	124	156	47	280	-	607	311	15-Sep-17	Conflict	Before 2018
West Harerge	Mesela	Male	93	140	109	202	31	575				
West Harerge	Mieso	Female	510	706	274	706	118	2,314	784	07-Mar-17	Conflict	Before 2018
West Harerge	Mieso	Male	392	588	392	823	118	2,313				
West Harerge	Mieso	Female	660	938	486	1,172	122	3,378	1,216	21-Mar-17	Conflict	Before 2018
West Harerge	Mieso	Male	739	894	557	1,233	226	3,649				
West Harerge	Mieso	Female	34	57	27	72	8	198	76	24-Mar-17	Conflict	Before 2018
West Harerge	Mieso	Male	38	46	30	72	11	197				
West Harerge	Mieso	Female	281	459	179	510	51	1,480	510	26-Mar-17	Conflict	Before 2018
West Harerge	Mieso	Male	332	357	230	485	77	1,481				
West Harerge	Mieso	Female	57	101	76	113	13	360	126	06-Jul-17	Conflict	Before 2018
West Harerge	Mieso	Male	76	76	44	126	19	341				
West Harerge	Mieso	Female	152	213	106	274	46	791	304	04-Sep-17	Conflict	Before 2018
West Harerge	Mieso	Male	182	213	152	319	30	896				
West Harerge	Mieso	Female	94	118	86	149	16	463	157	11-Sep-17	Conflict	Before 2018
West Harerge	Mieso	Male	79	118	79	149	24	449				
West Harerge	Mieso	Female	425	454	255	539	57	1,730	567	15-Sep-17	Conflict	Before 2018
West Harerge	Mieso	Male	340	312	198	595	85	1,530				
West Harerge	Mieso	Female	563	600	263	750	113	2,289	750	18-Sep-17	Conflict	Before 2018
West Harerge	Mieso	Male	450	525	413	788	113	2,289				
West Harerge	Mieso	Female	78	85	52	117	13	345	130	11-Jul-18	Conflict	During 2018
West Harerge	Mieso	Male	85	65	59	130	20	359				
West Harerge	Mieso	Female	108	100	58	166	17	449	166	12-Jul-18	Conflict	During 2018
West Harerge	Mieso	Male	108	141	50	166	17	482				
West Harerge	Mieso	Female	122	203	95	257	27	704	271	13-Jul-18	Conflict	During 2018
West Harerge	Mieso	Male	149	230	108	285	41	813				
West Harerge	Tulo	Female	72	64	40	143	8	327	159	18-Sep-17	Conflict	Before 2018
West Harerge	Tulo	Male	56	64	40	111	8	279				
West Harerge Total			12,497	15,799	9,215	21,703	2,878	62,092	10,880			
West Shewa	Ambo Zuria	Female	-	10	6	19	-	35	45	12-Sep-17	Conflict	Before 2018
West Shewa	Ambo Zuria	Male	10	16	31	45	1	103				
West Shewa	Dendi	Female	2	10	1	10	-	23	32	24-Sep-17	Conflict	Before 2018
West Shewa	Dendi	Male	5	9	2	34	1	51				
West Shewa	Jeldu	Female	9	8	11	36	-	64	60	18-Sep-17	Conflict	Before 2018
West Shewa	Jeldu	Male	12	12	12	48	-	84				
West Shewa Total			38	65	63	192	2	360	137			
Grand Total			172,274	208,474	114,503	320,540	36,782	852,573	144,316			

Disclaimer: Age and gender disaggregation for the site is extrapolated using a demographic calculator tool based on the age range and sex of the household members of 20 randomly selected households from the site.

Displacement Tracking Matrix (DTM) conducted in collaboration with Danish Refugee Council (DRC)



DTM is made possible thanks to the European Civil Protection and Humanitarian Aid Operations (ECHO) and the Office of United States Foreign Disaster Assistance (OFDA). Opinions expressed in this report are that of the authors and do not necessarily reflect the views of donors.