



DISPLACEMENT TRACKING MATRIX (DTM) AMHARA, ETHIOPIA
ROUND 16: March/April 2019
Summary of Key Findings
DATE OF PUBLICATION: June 2019





DISPLACEMENT TRACKING MATRIX (DTM) AMHARA, ETHIOPIA ROUND 16: MARCH/APRIL 2019



DTM

THE UN MIGRATION AGENCY

OVERVIEW OF DISPLACEMENT AMHARA REGION DTM Round 16 March 2019

Legend:

Sites by causes of displacement

- Conflict
- Climate induced

IDPs in assessed woredas

- 53 - 500
- 501 - 1,500
- 1,501 - 10,000
- 10,001 - 27,044
- No IDPs
- Not assessed

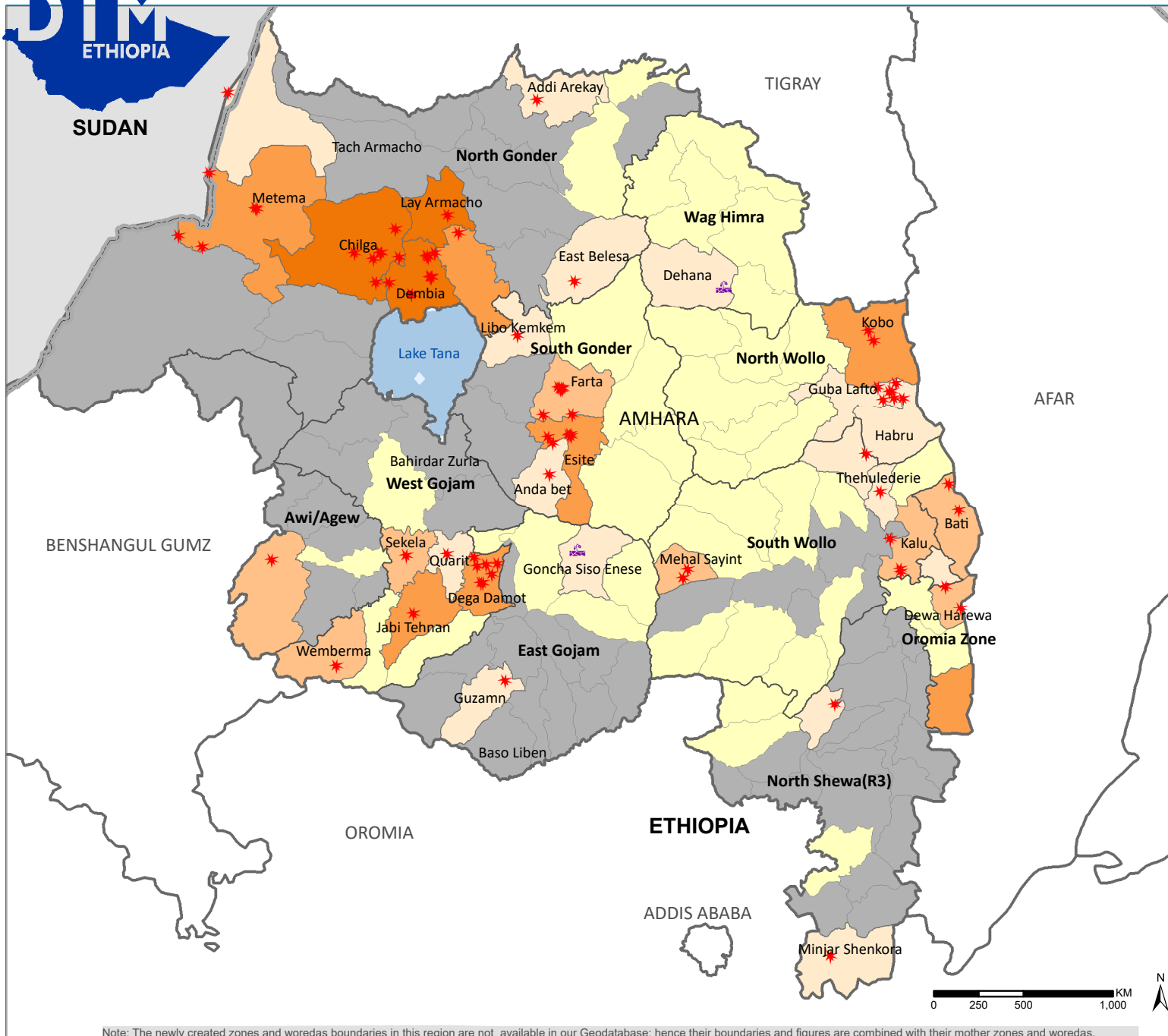
Boundaries

- International Boundary
- Regional Boundary
- Zonal Boundary
- Woreda Boundary

Total number of IDPs: **89,492**

Sources : IOM Map production date : 06 May 2019
 This map is for illustration purposes only.
 Names and boundaries on this map do not
 imply official endorsement or acceptance by IOM.
 Map Data Source: Boundary shapefile - CSA 2008

www.displacement.iom.int/ethiopia
dtmethiopia@iom.int



Note: The newly created zones and woredas boundaries in this region are not available in our Geodatabase; hence their boundaries and figures are combined with their mother zones and woredas.





DISPLACEMENT TRACKING MATRIX (DTM) AMHARA REGION, ETHIOPIA

ROUND 16: March/April 2019

AMHARA REGION - KEY FINDINGS

LOCATION AND CAUSE OF DISPLACEMENT:

90,144 displaced individuals comprising 21,439 households in 80 displacement sites were identified in Amhara region. These figures represent an increase of 66,468 individuals (+280.74%), an increase of 14,281 households (+199.51%) and 6 sites (+8.11%) since round 15 (January/February 2019). 63.5% sites opened during 2018 and 10.4% opened in 2019. Conflict was the primary cause of displacement for an estimated 99.71% of the displaced population.

DEMOGRAPHICS: 51% of displaced individuals were female and 49% were male. 49% were younger than 18 years old. 2% were over 60 years old.

SHELTER: 4 sites reported that over 25% of households were living in shelters that were below regional and cultural standards.

WASH: 2 sites meet SPHERE standards of access to over 15 liters of water per person per day. 43 displacement sites (54%) reported having no latrines.

FOOD, NUTRITION AND LIVELIHOODS: 13 sites (16%), representing 6,083 individuals, reported no access to food. 95% of sites reported that IDPs did not have access to income generating activities.

HEALTH: Diarrhea was the primary health concern in this round of data collection with 39 sites reporting this.

EDUCATION: In 23% of sites, 50% or less of the children on site are attending formal primary school. Formal primary school education is available at 56 sites. Alternative basic education (ABE) is not available at sites.

COMMUNICATION: 56% of sites reported that Families/Friends were IDP's primary source of information followed by Mobile Phone at 28% of sites.

Figure 2 shows IDP numbers disaggregated by cause over time.

Figure 1 illustrates trends in stock totals of displacement in the region over time compared to recent displacement.

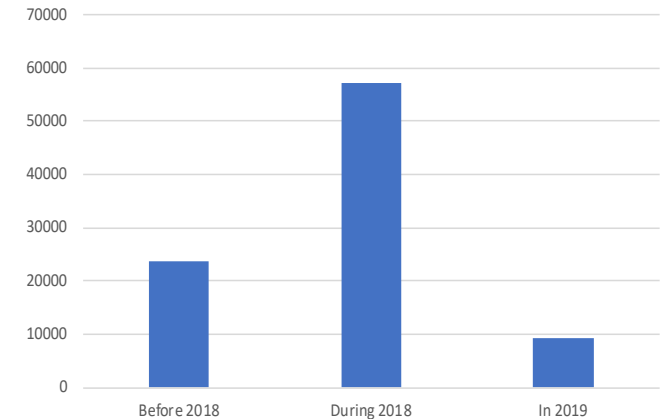


Figure 1: Trends in stock totals of displacement and new displacements from 2018 and 2019

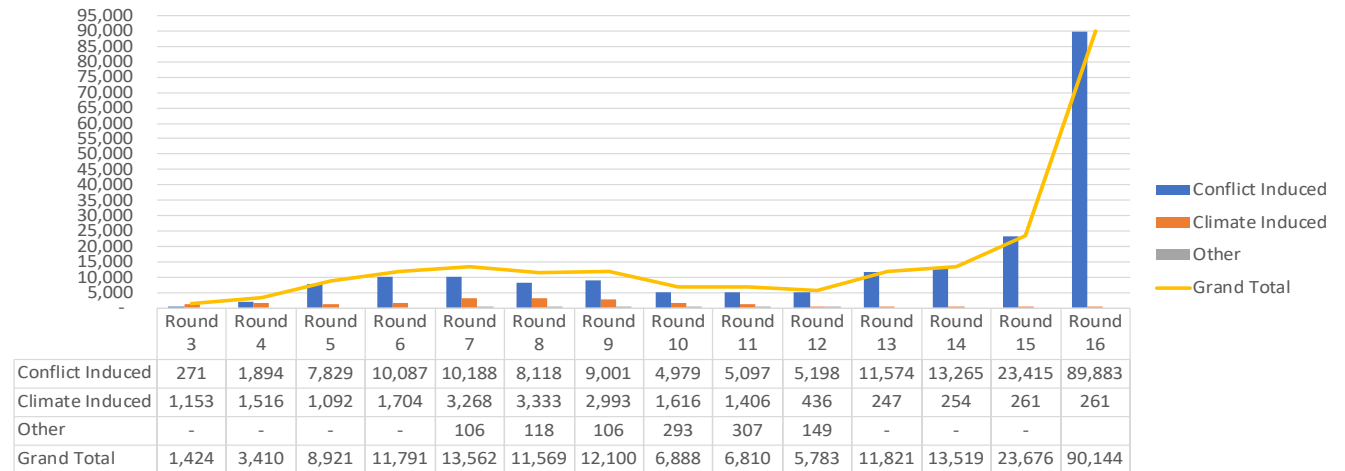


Figure 2: IDPs by cause of displacement by round



DISPLACEMENT TRACKING MATRIX (DTM) AMHARA REGION, ETHIOPIA ROUND 16: March/April 2019

MOBILITY TRENDS AND CAUSE OF DISPLACEMENT

Conflict has consistently been reported as the primary cause of displacement in the region (as indicated by figure 4). IDPs displaced in 2019, during 2018 and before 2018 reported being displaced by Conflict. In addition to this, 3.5% of IDPs reported being displaced previously. Furthermore, IDPs from 30 sites were leaving the current place of displacement. Of these, IDPs from 3 sites were going to the nearest village and IDPs from 8 sites intended to return to their place of origin.

Regarding the duration of sites: 10.40% of all sites identified opened in 2019 while 63.50% opened between January and December 2018. 26.20% of sites opened before 2018.

The majority of IDPs identified in the region were displaced to locations near their areas of origin. 81.93% of IDPs in the region are internally displaced from the region, within the region. Of the IDPs displaced within the region, 37.16% were displaced within their zone of origin.

Figure 3 shows the number of IDPs displaced by zone and cause of displacement. Figure 4 shows the distribution of IDPs by driver of displacement and time of displacement.

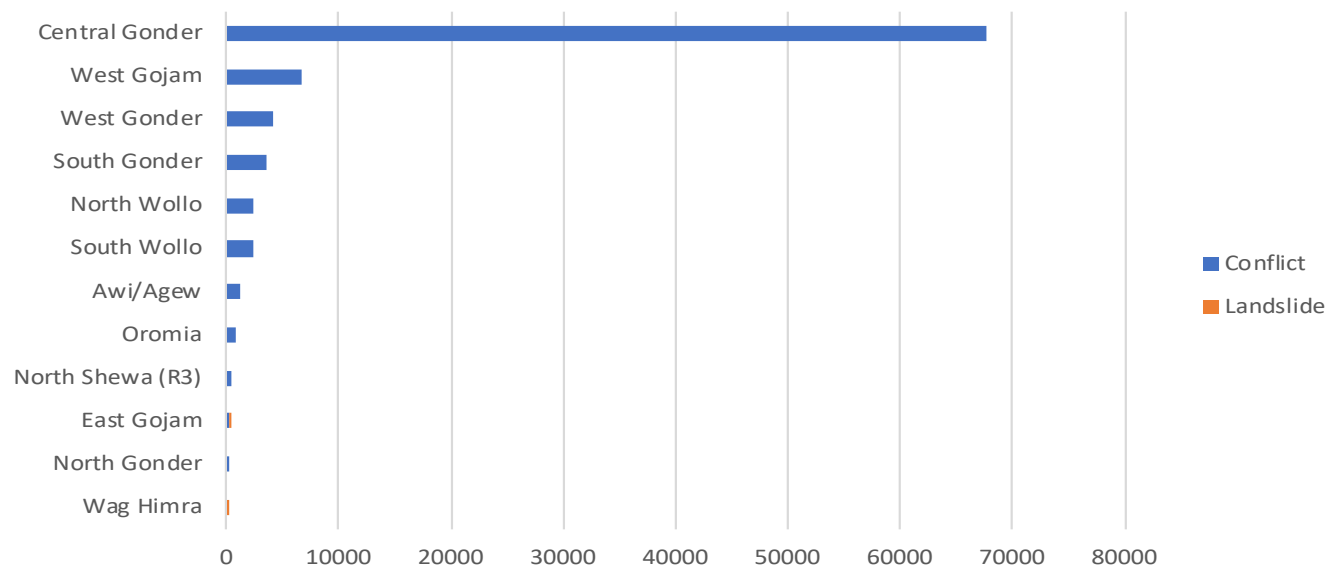


Figure 3: IDPs displaced by zone and cause of displacement

Duration	Conflict	Climate Induced	Grand Total
Before 2018	23,437	152	23,589
During 2018	57,115	109	57,224
In 2019	9,331	0	9,331
Grand Total	89,883	261	90,144

Figure 4: Distribution of IDPs by cause of displacement and time of displacement



DISPLACEMENT TRACKING MATRIX (DTM) AMHARA REGION, ETHIOPIA

ROUND 16: March/April 2019

DURABLE SOLUTIONS, VULNERABILITIES AND DEMOGRAPHICS

At 30% of the sites, IDPs foresaw a resolution to their displacement, while IDPs at 67.5% of sites did not.

At 33.75% of sites, IDPs prefer local integration as a durable solution to their displacement while at 35% sites they prefer return.

Figure 5 shows the number of sites by obstacles to return, while figure 6 shows support IDPs need to return or locally integrate.

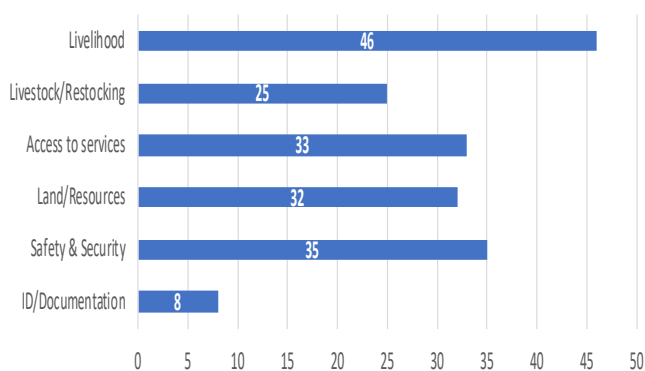


Figure 5: Number of sites by obstacles to return

The demographic breakdown is shown in figure 7. Individuals with specific vulnerabilities were also reported at displacement sites and are represented in figure 8.

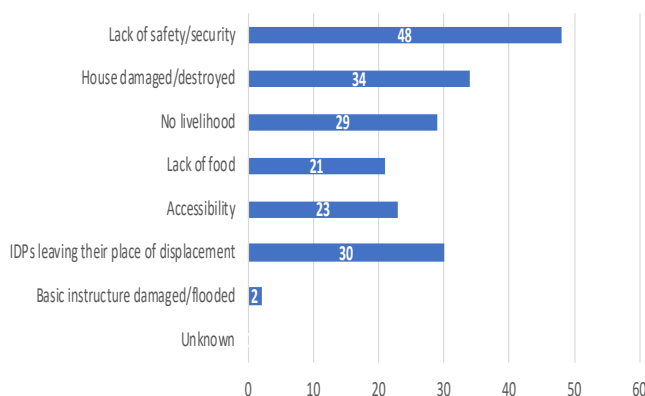


Figure 6: Number of sites by support needed to return or locally integrate

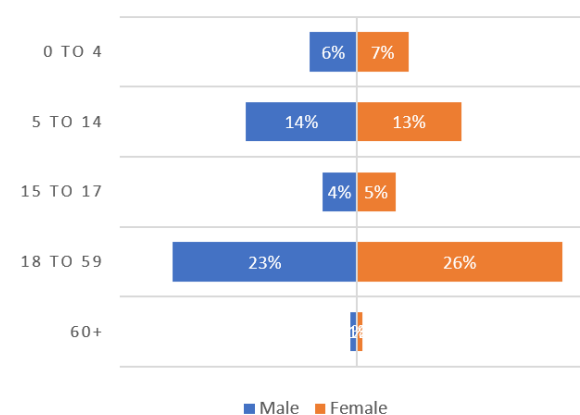


Figure 7: Demographic breakdown

Vulnerable Population	Number of IDPS
Number of breastfeeding mothers	2717
Elderly headed households	45
Elderly persons without care givers	481
Number of members of ethnic minorities	0
Number of members of religious minorities	58
Orphaned children	66
Persons with chronic diseases/serious medical conditions	230
Number of persons with disabilities over 18	251
Number of persons with disabilities under 18	61
Number of pregnant girls under 18	4
Number of pregnant women over 18	834
Separated children	45
Single-female headed households	4121
Single-male headed households	754
Unaccompanied children	7
Single-child headed households	0
Grand Total	9,674

Figure 8: Vulnerable populations



DISPLACEMENT TRACKING MATRIX (DTM) AMHARA REGION, ETHIOPIA
ROUND 16: March/April 2019

INCREASE	NEW
DECREASE	UNCOVERED/CLOSED
NO CHANGE	

Round 15-16 Comparison Table

Zone	Woreda	Displacement Reason	Round 16			% change in estimated # of HHs	Round 15		
			HHs	Individuals	Sites		HHs	Individuals	Sites
Awi/Agew	Chagni	Conflict	386	1,235	1	0.0%	-	-	-
Awi/Agew Total			386	1,235	1	0.0%	-	-	-
Central Gonder	Aykel City Administarion	Conflict	3,101	13,104	2	+1335.65%	216	866	2
Central Gonder	Chilga	Conflict	211	960	1	+580.65%	31	154	1
Central Gonder	Chilga 1	Conflict	922	5,509	3	0.0%	-	-	-
Central Gonder	Chilga 2	Conflict	3,447	19,804	2	0.0%	-	-	-
Central Gonder	East Belesa	Conflict	61	252	1	0.0%	61	265	1
Central Gonder	East Dembia	Conflict	468	2,160	5	+157.14%	182	1,014	2
Central Gonder	Gonder Zuria	Conflict	1,421	6,679	1	0.0%	-	-	-
Central Gonder	Lay Armacheho	Conflict	4,866	16,422	1	+948.71%	464	1,856	1
Central Gonder	Tach Armacheho	Conflict	-	-	-	-100.00%	169	169	1
Central Gonder	West Dembia	Conflict	509	2,861	2	+1275.68%	37	209	1
Central Gonder Total			15,006	67,751	18	+1193.62%	1,160	4,533	9
East Gojam	Debre Markos	Conflict	41	182	1	+46.43%	28	124	1
East Gojam	Goncha Siso Enese	Climate Induced	24	109	1	0.0%	24	109	1
East Gojam Total			65	291	2	+25.00%	52	233	2
North Gonder	Addi Arekay	Conflict	61	61	1	-21.79%	78	78	2
North Gonder Total			61	61	1	-21.79%	78	78	2
North Shewa (R3)	Menz Keya Gabriel	Conflict	37	115	1	0.0%	-	-	-
North Shewa (R3)	Minjar Shenkora	Conflict	80	272	2	+100.00%	40	128	1
North Shewa (R3) Total			117	387	3	+192.50%	40	128	1
North Wollo	Guba Lafto	Conflict	171	426	5	-9.52%	189	508	6
North Wollo	Habru	Conflict	104	196	2	0.0%	104	196	2
North Wollo	Kobo	Conflict	627	1,853	2	-15.38%	741	1,967	3
North Wollo Total			902	2,475	9	-12.77%	1,034	2,671	11
Oromia	Bati	Conflict	132	668	2	+24.53%	106	543	3
Oromia	Dewa Harewa	Conflict	47	238	2	-53.47%	101	522	3



DISPLACEMENT TRACKING MATRIX (DTM) AMHARA REGION, ETHIOPIA

ROUND 16: March/April 2019

Zone	Woreda	Displacement Reason	Round 16			% change in estimated # of HHs	Round 15		
			HHs	Individuals	Sites		HHs	Individuals	Sites
Oromia Total			179	906	4	-13.53%	207	1,065	6
South Gonder	Anda Bet	Conflict	75	211	1	0.0%	75	211	1
South Gonder	Debre Tabor City Administration	Conflict	298	1,053	5	0.0%	298	795	5
South Gonder	Esite	Conflict	662	2,168	6	-7.28%	714	2,192	7
South Gonder	Farta	Conflict	45	123	1	0.0%	45	123	1
South Gonder	Libo Kemkem	Conflict	28	53	1	+3.70%	27	46	1
South Gonder Total			1,108	3,608	14	-4.40%	1,159	3,367	15
South Wollo	Ambasel	Conflict	27	83	1	0.0%	-	-	-
South Wollo	Kalu	Conflict	336	1,441	3	+9.80%	306	1,279	3
South Wollo	Mehal Sayint	Conflict	165	714	2	+0.61%	164	267	2
South Wollo	Thehulederie	Conflict	39	106	1	-2.50%	40	128	1
South Wollo Total			567	2,344	7	+11.18%	510	1,674	6
Wag Himra	Dehana	Climate Induced	25	152	1	0.0%	25	152	1
Wag Himra Total			25	152	1	0.0%	25	152	1
West Gojam	Bahirdar Zuria	Conflict	-	-	-	-100.00%	1,436	4,064	3
West Gojam	Dega Damot	Conflict	520	1,955	7	+2.16%	509	1,917	7
West Gojam	Jabi Tehnan	Conflict	1,098	3,157	1	+1009.09%	99	313	1
West Gojam	Quarit	Conflict	29	101	1	-25.64%	39	120	1
West Gojam	Sekela	Conflict	213	813	2	-31.95%	313	1,136	3
West Gojam	Wemberma	Conflict	139	711	1	-0.71%	140	865	1
West Gojam Total			1,999	6,737	12	-21.18%	2,536	8,415	16
West Gonder	Metema	Conflict	841	3,410	7	+185.08%	295	1,087	4
West Gonder	Metema Yohanes City Administarion	Conflict	183	787	1	+195.16%	62	273	1
West Gonder Total			1,024	4,197	8	+186.83%	357	1,360	5
		Climate Induced Sum	49	261	2	0.0%	49	261	2
		Conflict Sum	21,390	89,883	78	+200.89%	7,109	23,415	72
Grand Total			21,439	90,144	80	+199.51%	7,158	23,676	74



DISPLACEMENT TRACKING MATRIX (DTM) AMHARA REGION, ETHIOPIA

ROUND 16: March/April 2019

ABOUT DTM

DTM GLOBAL

The Displacement Tracking Matrix (DTM) is a system to track and monitor displacement and population mobility. It is designed to regularly and systematically capture, process and disseminate information to provide a better understanding of the movements and evolving needs of displaced populations, whether on site or en route. More information is available at www.globaldtm.info.

DTM IN ETHIOPIA

In Ethiopia, data is collected at zone, woreda and site level. Since September 2016, sixteen rounds of assessments have been completed. The DTM programme is implemented in close collaboration with the National Disaster Risk Management Commission, regional, zonal and woreda counterparts and DTMs implementing partner, the Danish Refugee Council (DRC).

METHODOLOGY

IOM's DTM team composed of enumerators from IOM and DRC were deployed across the country to collect the data. The process involved the following steps:

Zone level: Interviews with key informants from

the Disaster Prevention and Preparedness Office (DPPO), community representatives, and the education and health offices collect information including (among others) estimated caseload of displaced population, identification of woredas within the zone that host displaced populations, reason for displacement, time of arrival of IDPs and location of origin.

Woreda level: Information is collected from key woreda informants and includes (among others) estimated length of stay, number of displaced households and individuals at woreda level, displaced population by type of temporary settlements and approximate locations of identifiable displacement sites. The information is used to plan site assessments.

Site assessments: In-depth IDP site assessments capture detailed information through key informant interviews, direct observation and focus group discussions with male, female, elderly, children and IDP representatives. Data on available services by sector, accessibility constraints, exact type, location and name of the site, place of origin of IDPs, estimated size and type of the site and most common type of shelter are captured. Age and gender disaggregation for the site is extrapolated using a demographic calculator

tool based on the age range and sex of the household members of 20 randomly selected households from the site.

For more information please visit our website, www.displacement.iom.int or contact us at dtmethiopia@iom.int



Humanitarian Aid
and Civil Protection





International Organization for Migration (IOM)
The UN Migration Agency

ANNEX I : INTERNAL DISPLACEMENTS IN AMHARA REGION AS OF MARCH/APRIL 2019

Zone	Woreda	Sex	Age Groups					Total	HHs	Site Open Date	Cause	Duration
			Infants (0-4 y)	Children (5-14 y)	Youth (15-17 y)	Adults (18-59 y)	Elderly (60 +y)					
Aw/Agew	Chagni	Female	58	97	-	405	-	560	386	24-Jan-19	Conflict	In 2019
Aw/Agew	Chagni	Male	135	116	19	405	-	675				
Aw/Agew Total			193	213	19	810	-	1,235	386			
Central Gonder	Aykel City Administarion	Female	698	1,551	543	3,993	78	6,863	3,101	11-Dec-15	Conflict	Before 2018
Central Gonder	Aykel City Administarion	Male	970	1,628	387	3,178	78	6,241				
Central Gonder	Chilga	Female	42	95	53	274	-	464	211	15-Dec-15	Conflict	Before 2018
Central Gonder	Chilga	Male	42	74	53	306	21	496				
Central Gonder	Chilga 1	Female	101	404	101	404	40	1,050	404	04-Nov-18	Conflict	During 2018
Central Gonder	Chilga 1	Male	242	323	40	424	20	1,049				
Central Gonder	Chilga 1	Female	38	575	153	536	-	1,302	383	05-Dec-18	Conflict	During 2018
Central Gonder	Chilga 1	Male	153	460	77	517	57	1,264				
Central Gonder	Chilga 1	Female	47	128	41	223	-	439	135	08-Dec-18	Conflict	During 2018
Central Gonder	Chilga 1	Male	34	101	27	243	-	405				
Central Gonder	Chilga 2	Female	1,004	2,973	1,043	4,503	30	9,553	3,447	03-Dec-18	Conflict	During 2018
Central Gonder	Chilga 2	Male	944	2,710	1,392	4,947	258	10,251				
Central Gonder	East Belesa	Female	18	21	9	73	-	121	61	12-Nov-18	Conflict	During 2018
Central Gonder	East Belesa	Male	15	31	9	76	-	131				
Central Gonder	East Dembia	Female	33	85	46	130	20	314	130	17-Jun-18	Conflict	During 2018
Central Gonder	East Dembia	Male	39	91	33	130	7	300				
Central Gonder	East Dembia	Female	37	77	14	116	7	251	117	03-Dec-18	Conflict	During 2018
Central Gonder	East Dembia	Male	44	80	10	112	7	253				
Central Gonder	East Dembia	Female	23	64	29	151	-	267	116	06-Feb-19	Conflict	In 2019
Central Gonder	East Dembia	Male	23	52	6	157	-	238				
Central Gonder	East Dembia	Female	14	71	40	160	2	287	105	12-Feb-19	Conflict	In 2019
Central Gonder	East Dembia	Male	8	72	23	136	11	250				
Central Gonder	Gonder Zuria	Female	604	853	675	1,563	-	3,695	1,421	11-Jan-19	Conflict	In 2019
Central Gonder	Gonder Zuria	Male	391	1,030	249	1,314	-	2,984				
Central Gonder	Lay Armacheho	Female	1,581	2,311	730	4,501	243	9,366	4,866	29-Nov-18	Conflict	During 2018
Central Gonder	Lay Armacheho	Male	730	2,920	608	2,798	-	7,056				
Central Gonder	West Dembia	Female	135	354	91	882	58	1,520	509	05-Dec-18	Conflict	During 2018
Central Gonder	West Dembia	Male	128	483	146	558	26	1,341				
Central Gonder Total			8,138	19,617	6,628	32,405	963	67,751	15,006			
East Gojam	Debre Markos	Female	18	18	3	43	1	83	41	29-Sep-18	Conflict	During 2018
East Gojam	Debre Markos	Male	11	36	8	43	1	99				
East Gojam	Goncha Siso Enese	Female	6	14	7	26	3	56	24	27-Aug-18	Landslide	During 2018
East Gojam	Goncha Siso Enese	Male	3	18	5	26	1	53				
East Gojam Total			38	86	23	138	6	291	65			
North Gonder	Addi Arekay	Female	-	-	-	-	-	-	61	07-Dec-18	Conflict	During 2018
North Gonder	Addi Arekay	Male	-	-	-	-	-	-				
North Gonder Total			-	-	-	61	-	61	61			
North Shewa (R3)	Menz Keya Gabriel	Female	8	16	3	31	-	58	37	27-Oct-18	Conflict	During 2018
North Shewa (R3)	Menz Keya Gabriel	Male	16	14	8	18	1	57				
North Shewa (R3)	Minjar Shenkora	Female	8	20	-	40	-	68	40	23-Jul-18	Conflict	During 2018
North Shewa (R3)	Minjar Shenkora	Male	8	14	8	30	-	60				
North Shewa (R3)	Minjar Shenkora	Female	12	14	4	45	2	77	40	19-Mar-19	Conflict	In 2019
North Shewa (R3)	Minjar Shenkora	Male	8	19	2	38	-	67				
North Shewa (R3) Total			60	97	25	202	3	387	117			



International Organization for Migration (IOM)
The UN Migration Agency

ANNEX I : INTERNAL DISPLACEMENTS IN AMHARA REGION AS OF MARCH/APRIL 2019

Zone	Woreda	Sex	Age Groups					Total	HHs	Site Open Date	Cause	Duration
			Infants (0-4 y)	Children (5-14 y)	Youth (15-17 y)	Adults (18-59 y)	Elderly (60 +y)					
North Wollo	Guba Lafto	Female	4	17	3	33	6	63				
North Wollo	Guba Lafto	Male	6	9	4	29	2	50	47	10-Nov-17	Conflict	Before 2018
North Wollo	Guba Lafto	Female	3	1	1	17	3	25	30	19-Nov-17	Conflict	Before 2018
North Wollo	Guba Lafto	Male	-	4	-	18	3	25				
North Wollo	Guba Lafto	Female	7	15	6	37	3	68	44	21-Nov-17	Conflict	Before 2018
North Wollo	Guba Lafto	Male	6	19	7	36	9	77				
North Wollo	Guba Lafto	Female	2	5	3	15	2	27	27	05-Dec-17	Conflict	Before 2018
North Wollo	Guba Lafto	Male	-	3	4	21	3	31				
North Wollo	Guba Lafto	Female	4	6	3	13	1	27	23	28-Dec-17	Conflict	Before 2018
North Wollo	Guba Lafto	Male	3	8	4	16	2	33				
North Wollo	Habru	Female	3	15	14	58	6	96	104	30-Oct-17	Conflict	Before 2018
North Wollo	Habru	Male	4	13	10	67	6	100				
North Wollo	Kobo	Female	117	235	94	385	15	846	427	03-Sep-18	Conflict	During 2018
North Wollo	Kobo	Male	129	121	106	425	26	807				
North Wollo	Kobo	Female	-	-	-	-	-	-	200	04-Nov-18	Conflict	During 2018
North Wollo	Kobo	Male	-	-	-	200	-	200				
North Wollo Total			288	471	259	1,370	87	2,475	902			
Oromia	Bati	Female	28	28	10	56	5	127	51	22-Apr-17	Conflict	Before 2018
Oromia	Bati	Male	23	20	13	48	8	112	81	12-Dec-17	Conflict	Before 2018
Oromia	Bati	Female	45	73	12	85	8	223				
Oromia	Bati	Male	24	69	24	81	8	206				
Oromia	Dewa Harewa	Female	16	13	8	27	5	69	25	15-Jan-01	Conflict	Before 2018
Oromia	Dewa Harewa	Male	14	19	7	26	3	69				
Oromia	Dewa Harewa	Female	9	12	7	23	3	54	22	20-Oct-18	Conflict	During 2018
Oromia	Dewa Harewa	Male	10	11	4	20	1	46				
Oromia Total			169	245	85	366	41	906	179			
South Gonder	Anda Bet	Female	11	17	9	66	-	103	75	18-Dec-17	Conflict	Before 2018
South Gonder	Anda Bet	Male	4	19	9	76	-	108				
South Gonder	Debre Tabor City Administration	Female	8	12	12	35	-	67	41	05-Oct-17	Conflict	Before 2018
South Gonder	Debre Tabor City Administration	Male	10	12	10	29	-	61				
South Gonder	Debre Tabor City Administration	Female	14	86	19	90	-	209	95	11-Nov-17	Conflict	Before 2018
South Gonder	Debre Tabor City Administration	Male	33	90	10	76	-	209				
South Gonder	Debre Tabor City Administration	Female	9	12	2	28	-	51	35	14-Dec-17	Conflict	Before 2018
South Gonder	Debre Tabor City Administration	Male	14	11	-	28	-	53				
South Gonder	Debre Tabor City Administration	Female	46	43	11	112	-	212	127	23-Dec-17	Conflict	Before 2018
South Gonder	Debre Tabor City Administration	Male	23	24	15	129	-	191				
South Gonder	Esite	Female	20	17	6	43	-	86	57	20-Mar-13	Conflict	Before 2018
South Gonder	Esite	Male	11	17	14	51	-	93				
South Gonder	Esite	Female	48	86	10	181	10	335	191	10-Apr-13	Conflict	Before 2018
South Gonder	Esite	Male	29	67	10	181	10	297				
South Gonder	Esite	Female	28	34	22	101	-	185	112	10-May-13	Conflict	Before 2018
South Gonder	Esite	Male	39	84	22	95	-	240				
South Gonder	Esite	Female	24	40	40	135	-	239	159	07-Jun-13	Conflict	Before 2018
South Gonder	Esite	Male	56	64	32	159	-	311				
South Gonder	Esite	Female	16	23	7	49	-	95	65	11-Aug-15	Conflict	Before 2018
South Gonder	Esite	Male	13	10	-	68	-	91				



International Organization for Migration (IOM)
The UN Migration Agency

ANNEX I : INTERNAL DISPLACEMENTS IN AMHARA REGION AS OF MARCH/APRIL 2019

Zone	Woreda	Sex	Age Groups					Total	HHs	Site Open Date	Cause	Duration
			Infants (0-4 y)	Children (5-14 y)	Youth (15-17 y)	Adults (18-59 y)	Elderly (60 +y)					
South Gondar	Esite	Female	16	12	4	62	-	94				
South Gondar	Esite	Male	12	31	4	55	-	102	78	16-Jan-16	Conflict	Before 2018
South Gondar	Farta	Female	7	16	-	38	-	61				
South Gondar	Farta	Male	9	10	1	42	-	62	45	12-Sep-17	Conflict	Before 2018
South Gondar	Libo Kemkem	Female	4	5	1	9	-	19				
South Gondar	Libo Kemkem	Male	5	8	-	21	-	34	28	07-Jul-17	Conflict	Before 2018
South Gondar Total			509	850	270	1,959	20	3,608	1,108			
South Wollo	Ambasel	Female	7	7	2	20	1	37				
South Wollo	Ambasel	Male	7	12	2	24	1	46	27	20-Jan-18	Conflict	During 2018
South Wollo	Kalu	Female	82	149	41	311	22	605				
South Wollo	Kalu	Male	103	110	60	230	36	539	271	15-Aug-17	Conflict	Before 2018
South Wollo	Kalu	Female	20	42	13	81	3	159				
South Wollo	Kalu	Male	20	36	13	62	7	138	65	07-Sep-18	Conflict	During 2018
South Wollo	Mehal Sayint	Female	7	14	4	39	3	67				
South Wollo	Mehal Sayint	Male	9	13	6	32	2	62	38	15-Aug-16	Conflict	Before 2018
South Wollo	Mehal Sayint	Female	57	57	32	140	13	299				
South Wollo	Mehal Sayint	Male	57	89	38	89	13	286	127	01-Sep-16	Conflict	Before 2018
South Wollo	Thehulederie	Female	5	9	3	37	1	55				
South Wollo	Thehulederie	Male	3	15	4	28	1	51	39	15-Sep-18	Conflict	During 2018
South Wollo Total			377	553	218	1,093	103	2,344	567			
Wag Himra	Dehana	Female	10	12	9	34	7	72				
Wag Himra	Dehana	Male	14	15	11	37	3	80	25	13-Jul-17	Landslide	Before 2018
Wag Himra Total			24	27	20	71	10	152	25			
West Gojam	Dega Damot	Female	7	9	3	18	-	37				
West Gojam	Dega Damot	Male	6	6	2	23	-	37	28	23-Oct-17	Conflict	Before 2018
West Gojam	Dega Damot	Female	50	91	42	158	-	341				
West Gojam	Dega Damot	Male	100	133	-	75	-	308	166	08-Nov-17	Conflict	Before 2018
West Gojam	Dega Damot	Female	8	14	1	28	-	51				
West Gojam	Dega Damot	Male	9	8	4	17	-	38	28	20-Nov-17	Conflict	Before 2018
West Gojam	Dega Damot	Female	17	9	9	43	-	78				
West Gojam	Dega Damot	Male	4	28	-	39	-	71	43	24-Nov-17	Conflict	Before 2018
West Gojam	Dega Damot	Female	74	130	37	195	-	436				
West Gojam	Dega Damot	Male	74	74	56	167	-	371	186	03-Dec-17	Conflict	Before 2018
West Gojam	Dega Damot	Female	15	15	1	63	-	94				
West Gojam	Dega Damot	Male	14	19	3	57	-	93	69	24-Dec-17	Conflict	Before 2018
West Gojam	Jabi Tehnan	Female	275	220	27	961	-	1,483				
West Gojam	Jabi Tehnan	Male	55	357	110	1,125	27	1,674	1,098	06-Nov-18	Conflict	During 2018
West Gojam	Quarit	Female	8	19	3	30	-	60				
West Gojam	Quarit	Male	7	13	1	20	-	41	29	20-Nov-18	Conflict	During 2018
West Gojam	Sekela	Female	17	29	8	66	-	120				
West Gojam	Sekela	Male	23	53	8	51	-	135	47	15-Apr-18	Conflict	During 2018



International Organization for Migration (IOM)
The UN Migration Agency

ANNEX I : INTERNAL DISPLACEMENTS IN AMHARA REGION AS OF MARCH/APRIL 2019

Zone	Woreda	Sex	Age Groups					Total	HHs	Site Open Date	Cause	Duration
			Infants (0-4 y)	Children (5-14 y)	Youth (15-17 y)	Adults (18-59 y)	Elderly (60 +y)					
West Gojam	Sekela	Female	32	82	12	129	-	255	166	15-Nov-18	Conflict	During 2018
West Gojam	Sekela	Male	45	101	20	137	-	303				
West Gojam	Wemberma	Female	57	41	23	189	3	313	139	09-Nov-18	Conflict	During 2018
West Gojam	Wemberma	Male	62	60	28	213	35	398				
West Gojam Total			959	1,511	398	3,804	65	6,737	1,999			
West Gonder	Metema	Female	8	13	5	21	1	48	21	16-Dec-15	Conflict	Before 2018
West Gonder	Metema	Male	4	14	2	28	-	48				
West Gonder	Metema	Female	15	36	61	107	5	224	102	17-Dec-15	Conflict	Before 2018
West Gonder	Metema	Male	36	41	15	97	15	204				
West Gonder	Metema	Female	50	60	40	200	10	360	200	27-Oct-18	Conflict	During 2018
West Gonder	Metema	Male	60	70	40	150	10	330				
West Gonder	Metema	Female	41	77	8	184	13	323	175	04-Nov-18	Conflict	During 2018
West Gonder	Metema	Male	81	66	26	146	6	325				
West Gonder	Metema	Female	42	97	83	388	14	624	277	08-Dec-18	Conflict	During 2018
West Gonder	Metema	Male	97	152	42	388	14	693				
West Gonder	Metema	Female	13	30	13	59	-	115	66	20-Feb-19	Conflict	In 2019
West Gonder	Metema	Male	20	26	7	63	-	116				
West Gonder	Metema Yohanes City Administarion	Female	9	110	37	201	-	357	183	05-Nov-18	Conflict	During 2018
West Gonder	Metema Yohanes City Administarion	Male	55	128	37	201	9	430				
West Gonder Total			531	920	416	2,233	97	4,197	1,024			
Grand Total			11,286	24,590	8,361	44,512	1,395	90,144	21,439			

Disclaimer: Age and gender disaggregation for the site is extrapolated using a demographic calculator tool based on the age range and sex of the household members of 20 randomly selected households from the site.

Displacement Tracking Matrix (DTM) conducted in collaboration with Danish Refugee Council (DRC)



Humanitarian Aid
and Civil Protection



USAID
FROM THE AMERICAN PEOPLE

DTM is made possible thanks to the European Civil Protection and Humanitarian Aid Operations (ECHO) and the Office of United States Foreign Disaster Assistance (OFDA). Opinions expressed in this report are that of the authors and do not necessarily reflect the views of donors.