



# EMERGENCY TRACKING TOOL (ETT)

DTM Emergency Tracking Tool (ETT) is deployed to track and provide up-to-date information on sudden displacement and other population movements

## ETT Report: No. 120 | 20-26 May 2019

### Movements



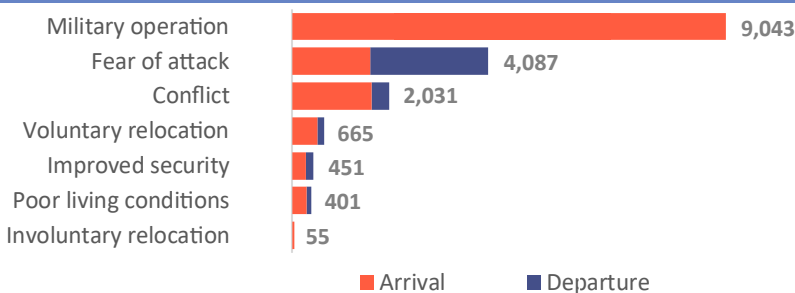
### New Arrival Screening by Nutrition Partners



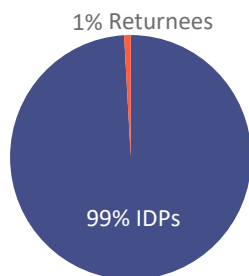
Within the period of 20-26 May 2019, a total of 16,733 movements were recorded, including 13,503 arrivals and 3,230 departures. Arrivals were recorded at locations in Askira/Uba, Bama, Chibok, Damboa, Dikwa, Gwoza, Hawul, Jere, Kala Balge, Maiduguri, Mobbar, Monguno and Ngala Local Government Areas (LGAs) of Borno state and locations in Demsa, Fufore, Girei, Gombi, Guyuk, Hong, Madagali, Maiha, Mayo Belwa, Michika, Mubi North, Mubi South, Numan, Song, Yola North and Yola South LGAs of Adamawa state. Departures were recorded at Askira/Uba and Chibok LGA of Borno state, Demsa, Gombi, Hong, Madagali, Mayo Belwa, Michika, Mubi North, Mubi South, Numan and Yola North LGAs of Adamawa state.

ETT assessments identified the following movement triggers: voluntary relocation (4%), improved security (3%), fear of attack (24%), ongoing conflict (12%) military operation (54%) and poor living conditions (3%).

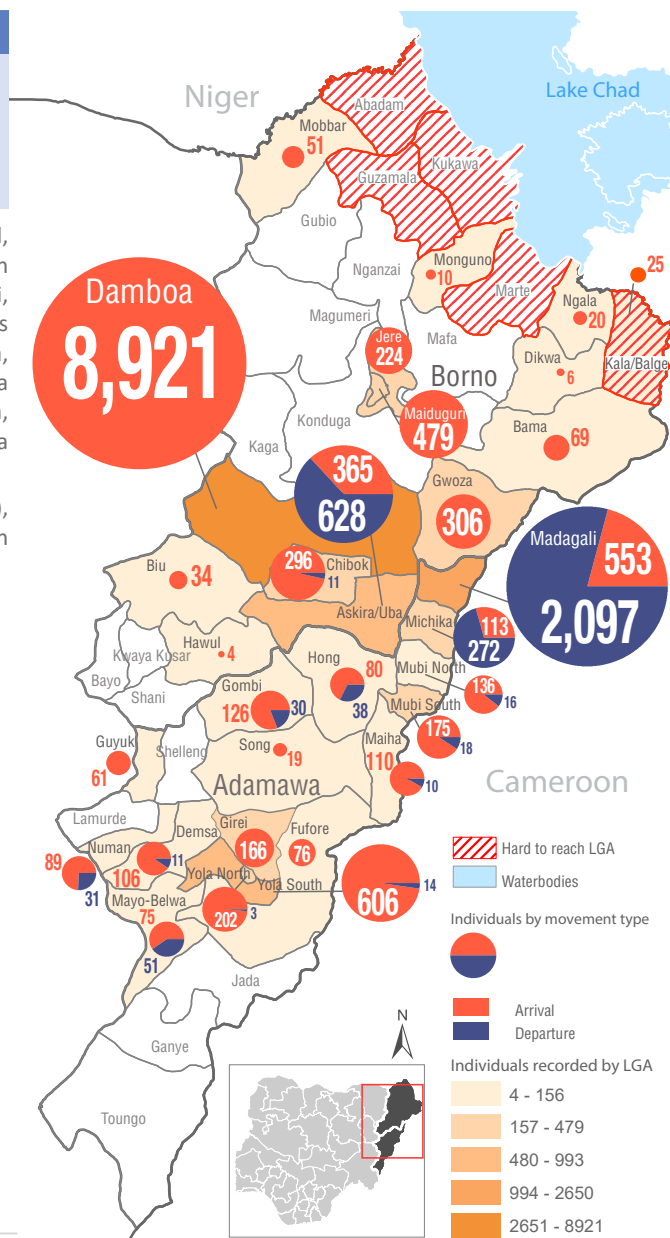
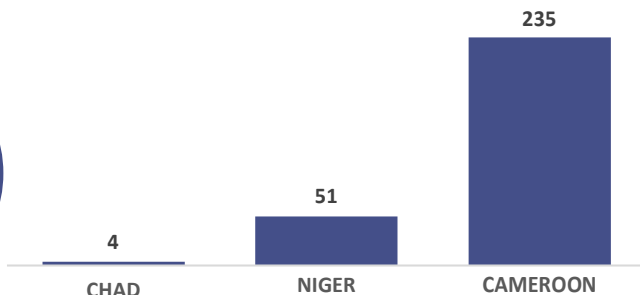
### Number of individuals by movement triggers



### Affected population



### Arrivals from Neighbouring Countries



\* Arrivals in Kala/Balge were captured by ETT outreach staff in the LGA

### Summary of major movements

**Damboa:** 8,921 arrivals were recorded in Damboa LGA of Borno state. The new arrivals were all from Sabon Gari in Aure/Multe/Forfor ward and were tracked at Damboa central ward of Damboa LGA. The new arrivals all reported to have relocated due to military operation.

**Madagali:** 553 arrivals and 2,097 departures were recorded in Madagali LGA of Adamawa state. These include 27 arrivals from Duhu/Shuwa ward and 28 arrivals from Wagga ward of Madagali LGA tracked at Bebel and Madagali wards of Madagali LGA. Other arrivals include 165 arrivals from Namtari and Mbamba wards of Yola South LGA, 176 arrivals from Muchalla and Mayo Bani wards of Mubi North LGA, 22 arrivals from Gwapopolok ward of Shelling LGA, 41 arrivals from Imburu ward of Numan LGA, 29 arrivals from Lamurde ward of Mubi South LGA, 38 arrivals from Shangui and Kwakwa'a wards of Hong LGA, 13 arrivals from Guyaku ward of Gombi LGA and 14 arrivals from Ribadu ward of Fufore LGA. Departures include 292 from Jambutu ward of Yola North LGA, 529 departures from Girei I and Modire/Vinikilang wards of Girei LGA, 500 departures from Digil and Lamurde wards of Mubi South LGA, 465 departures from Namtari and Bole Yolde Pate wards of Yola South LGA, 105 departures from Song Waje ward of Song LGA, 84 departures from Mayo Nguli and Sorau A wards of Maiha LGA, 50 departures from Kwarhi ward of Hong LGA. Other departures are from Borno state and they include, 36 departures from Pulka ward of Gwoza LGA, 19 departures from Soye ward of Bama LGA and 17 departures from Wamdeo/Rumirig ward of Askira/Uba LGA. 78% of the new arrivals reported to have relocated due to fear of attack, 5% due to poor living conditions while 16% was due to improved security. 97% of the departure was due to fear of attack, 1% due to poor living conditions, 2% due to improved security while 1% relocated voluntarily.

**Askira/Uba:** 365 arrivals and 628 departures were recorded in Askira/Uba LGA of Borno state. These include 142 arrivals from Mussa of Askira/Uba LGA tracked at Wamdeo ward of Askira/Uba LGA. Other arrivals include 161 arrivals from Uba ward of Hong LGA and 62 arrivals from Mutum Biyu II ward of Gassol LGA of Taraba state. Departures include 101 from Gatamarwa ward of Chibok LGA, 272 departures from Hildi and Uba wards of Hong LGA, 77 departures from Luggere ward of Yola North LGA, 79 departures from Bole Yolde Pate ward of Yola South LGA, 59 departures from Nasarawo ward of Mubi South LGA and 40 departures from Gereng ward of Girei LGA of Adamawa state. 59% of the new arrivals reported to have relocated due to fear of attack while 41% relocated due to the ongoing conflict. 60% of the departure was due to the ongoing conflict, 24% due to fear of attack, 9% due to improved security while 7% was due to poor living conditions.

## New Arrival Malnutrition Screening Summary (children 6-59 months)

An exhaustive nutrition screening using mid-upper arm circumference (MUAC) and Oedema for acute malnutrition was conducted by Nutrition Sector partners for 4,829 children of 6-59 months. Of the 4,829 children screened, the MUAC reading was: 177 children (4 from accessible area and 173 from inaccessible area) were in the Red category, 2,059 were in the Yellow category and 2,593 were measured in the Green category. No case of Oedema was reported in the 7 LGAs.

The results also include 64 children from neighbouring Cameroon, Chad and Republic of Niger (14 moved to Bama, 34 to Gwoza, 12 to Mobbar and 4 to Ngala). Out of the 64 children measured, 2 were in the red category, 55 were in the green category and 7 children were in the yellow category. All children found with severe acute malnutrition have been admitted for treatment. The data presented is not surveillance results and should be interpreted with caution.

LGA	MUAC Categories						Total
	Green (≥12.5cm)		Yellow (11.5 cm - 12.5cm)		Red (<11.5cm)		
	Inaccessible	Accessible	Inaccessible	Accessible	Inaccessible	Accessible	
Bama	15	17	3	1	2	1	39
Damboa	2,482	-	2,043	-	171	-	4,696
Dikwa	-	2	-	-	-	-	2
Gwoza	-	54	-	11	-	3	68
Maiduguri	-	2	-	-	-	-	2
Mobbar	-	11	-	1	-	-	12
Monguno	-	6	-	-	-	-	6
Ngala	-	4	-	-	-	-	4
<b>Total</b>	<b>2,497</b>	<b>96</b>	<b>2,046</b>	<b>13</b>	<b>173</b>	<b>4</b>	<b>4,829</b>

■ Nourished     
 ■ Moderate Acute Malnutrition (MAM)     
 ■ Severe Acute Malnutrition (SAM)

**Table 1. Details of movements by locations of assessment and locations of arrival/departure** - only movements with at least 55 persons are listed below

Tracking location			Movement location				
STATE	LGA	WARD	STATE	LGA	WARD	ARRIVAL	DEPARTURE
ADAMAWA	GOMBI	GUYAKU	ADAMAWA	MADAGALI	K/WUROGAYANDI	56	-
	MADAGALI	DUHU / SHUWA	ADAMAWA	GIREI	GIREI I	-	407
				HONG	SORAU A	-	54
				MUBI NORTH	MUCHALLA	167	-
				MUBI SOUTH	DIGIL	-	300
					LAMURDE	-	200
				YOLA NORTH	JAMBTUTU	-	292
				YOLA SOUTH	NAMTARI	-	157
				GIREI	MODIRE/VINIKILANG	-	122
				SONG	SONG WAJE	-	105
				YOLA SOUTH	BOLE YOLDE PATE	-	308
	NAMTARI	156	-				
	MAYO BELWA	MAYO BELWA	ADAMAWA	MAYO BELWA	MAYO BELWA	55	-
	MICHIKA	BAZZA MARGHI	BORNO	GWOZA	PULKA	-	59
		MADZI	GOMBE	AKKO	GONNA	-	109
		MINISKI WURO NGIKI	ADAMAWA	MUBI NORTH	BESTO	-	75
		TUMBARA NGABULI	ADAMAWA	MICHIKA	THUKUDOU / SUFUKU	102	-
	MUBI NORTH	DIGIL	BORNO	ASKIRA / UBA	LASSA	70	-
MUBI SOUTH	LAMURDE	ADAMAWA	MADAGALI	DUHU / SHUWA	53	-	
	NASSARAWO	BORNO	ASKIRA / UBA	LASSA	63	-	
NUMAN	IMBURU	ADAMAWA	MADAGALI	DUHU / SHUWA	64	-	
YOLA SOUTH	BOLE / YOLDE PATE	ADAMAWA	MADAGALI	K/WUROGAYANDI	308	-	
	MBAMBA			DUHU / SHUWA	133	-	
				K/WUROGAYANDI	156	-	
BORNO	ASKIRA / UBA	ASKIRA EAST	BORNO	CHIBOK	GATAMARWA	-	57
		DILLE / HUYIM	ADAMAWA	HONG	HILDI	-	244
			TARABA	GASSOL	MUTUM BIYU II	62	-
			ADAMAWA	HONG	UBA	150	-
				MUBI SOUTH	NASARAWO	-	59
				YOLA SOUTH	BOLE YOLDE PATE	-	79
	WAMDEO / RUMIRGO	BORNO	ASKIRA / UBA	MUSSA	142	-	
	CHIBOK	GATAMARWA	BORNO	ASKIRA / UBA	ASKIRA EAST	296	-
	DAMBOA	DAMBOA CENTRAL	BORNO	DAMBOA	AURE/MULTE/FORFOF	8,921	-
	GWOZA	PULKA/BOKKO	BORNO	BAMA	DARAJAMAL	139	-
			CAMEROON	MARWA	MORA	112	-
	JERE	OLD MAIDUGURI	BORNO	KUKAWA	BAGA	136	-
MONGUNO				MONGUNO	88	-	
MAIDUGURI	MAISANDARI	BORNO	JERE	DALA LAWANTI	479	-	

The depiction and use of boundaries, geographic names, and related data shown on maps and included in this report are not warranted to be error free nor do they imply judgment on the legal status of any territory, or any endorsement or acceptance of such boundaries by IOM.

For more information or to report an alert, please contact:

Henry Kwenin, DTM Project Coordinator: [hkwenin@iom.int](mailto:hkwenin@iom.int) | +234 903 8852 524    Dave Bercasio, Emergency Coordinator: [dbercasio@iom.int](mailto:dbercasio@iom.int) | +234 907 5070 001    DTM information products: <http://nigeria.iom.int/dtm>