



EMERGENCY TRACKING TOOL (ETT)

DTM Emergency Tracking Tool (ETT) is deployed to track and provide up-to-date information on sudden displacement and other population movements

ETT Report: No. 119 | 13-19 May 2019

Movements



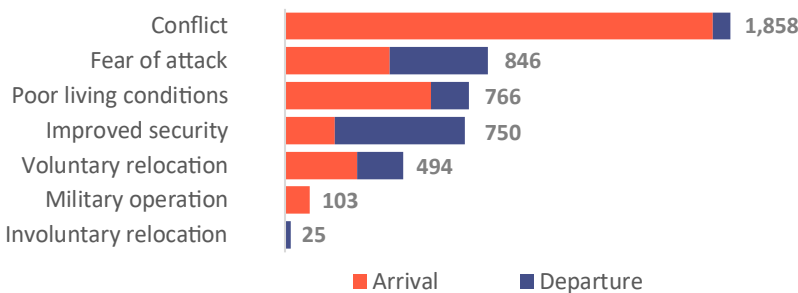
New Arrival Screening by Nutrition Partners



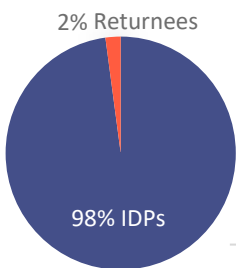
Within the period of 13 -19 May 2019, a total of 4,842 movements were recorded, including 3,439 arrivals and 1,403 departures. Arrivals were recorded at locations in Askira/Uba, Bama, Chibok, Damboa, Dikwa, Gwoza, Jere, Kala Balge, Maiduguri, Mobbar, Monguno and Ngala Local Government Areas (LGAs) of Borno state and locations in Demsa, Fufore, Girei, Gombi, Guyuk, Hong, Lamurde, Madagali, Maiha, Michika, Mubi North, Mubi South, Numan, Song, Yola North and Yola South LGAs of Adamawa state. Departures were recorded at Askira/Uba and Bama LGA of Borno state, Fufore, Girei, Gombi, Guyuk, Hong, Madagali, Mayo Belwa, Michika, Mubi North, Mubi South, Numan and Yola North LGAs of Adamawa state.

ETT assessments identified the following movement triggers: voluntary relocation (10%), involuntary relocation (1%) improved security (16%), fear of attack (17%), ongoing conflict (38%) military operation (2%) and poor living conditions (16%).

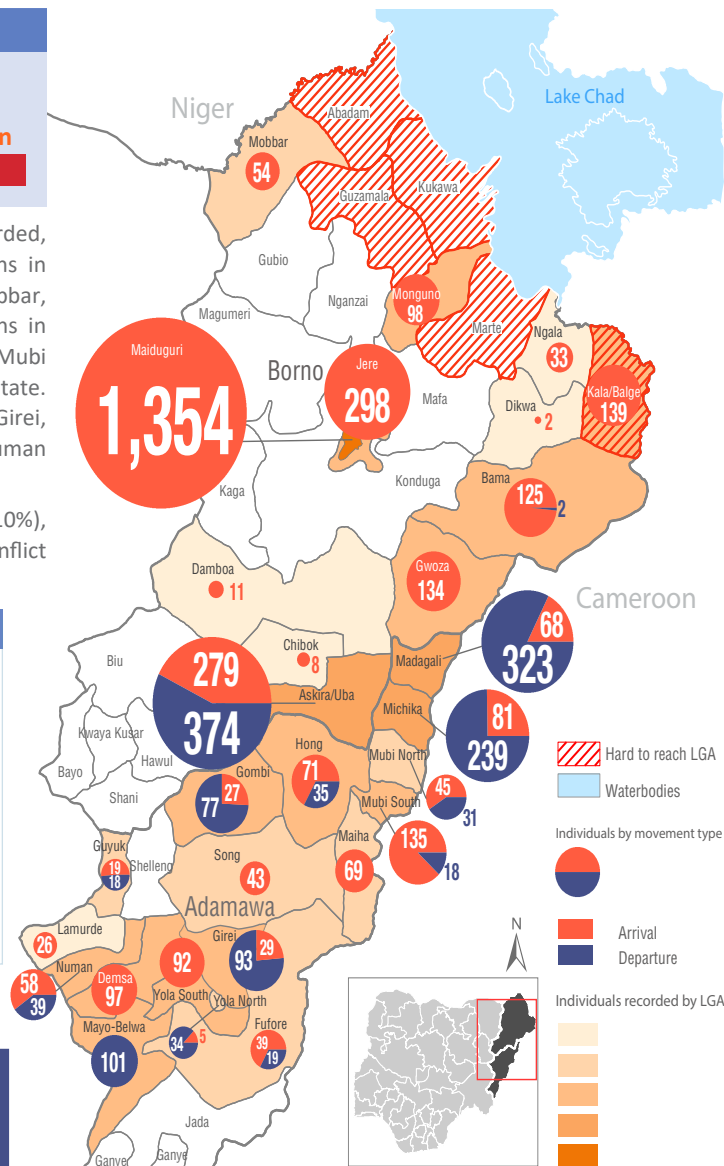
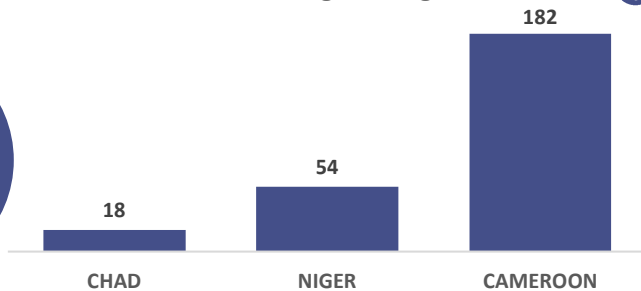
Number of individuals by movement triggers



Affected population



Arrivals from Neighbouring Countries



Summary of major movements

Maiduguri: 1,354 arrivals were recorded in Maiduguri Metropolitan Council (MMC) of Borno state. The new arrivals were all from Molai in Dala Lanwanti ward of Jere LGA and they reported to have relocated due to the ongoing conflict.

Askira/Uba: 279 arrivals and 374 departures were recorded in Askira/Uba LGA of Borno state. These include 97 arrivals from Kopa/Multhfu ward, 29 arrivals from Chull/Rumirgo ward and 5 arrivals from Dille/Huyim ward of Askira/Uba LGA tracked at Musa, Uba and Husara Tampul wards of Askira/Uba LGA. Other arrivals include 67 from Kautikari ward and 23 arrivals from Kuburmbula ward of Chibok LGA, 28 arrivals from Gumsuri/Misakirbudu ward of Damboa LGA, 30 arrivals from Gulak ward of Adamawa state. Departures include 360 from Gatamarwa ward of Chibok LGA and 14 departures from Mujara ward of Mubi South LGA of Adamawa state. 67% of the new arrivals reported to have relocated due to fear of attack, 11% due to the ongoing conflict, 10% due to poor living conditions, 10% due to improved security while 1% relocated voluntarily. 96% of the departure was due to improved security while 4% was due to poor living conditions.

Madagali: 68 arrivals and 323 departures were recorded in Madagali LGA of Adamawa state. These include 19 arrivals from Bebel and Gulak wards of Madagali LGA tracked at Wagga and Madagali wards of Madagali LGA. Other arrivals include 19 arrivals from Mayo Bani ward of Mubi North LGA, 9 arrivals from Mobire/Vinikilang ward of Girei LGA, 8 arrivals from Kwarhi ward of Hong LGA and 8 arrivals from Jeddari ward of Jere LGA of Borno state. 65% of the new arrivals reported to have relocated due to improved security, 28% due to poor living conditions while 7% was due to the ongoing conflict. 53% of the departure was due to fear of attack, 23% due to the ongoing conflict, 20% due to improved security while 4% relocated voluntarily.

New Arrival Malnutrition Screening Summary (children 6-59 months)

An exhaustive nutrition screening using mid-upper arm circumference (MUAC) and Oedema for acute malnutrition was conducted by Nutrition Sector partners for 100 children of 6-59 months. Of the 333 children screened, the MUAC reading was: 2 children (from accessible area) were in the Red category, 9 were in the Yellow category and 89 were measured in the Green category. No case of Oedema was reported in the 7 LGAs.

The results also include 41 children from neighbouring Cameroon, Chad and Republic of Niger (23 moved to Bama, 3 to Gwoza, 11 to Mobbar and 4 to Ngala). Out of the 41 children measured, none was in the red category, 38 were in the green category and 3 children were in the yellow category. All children found with severe acute malnutrition have been admitted for treatment. The data presented is not surveillance results and should be interpreted with caution.

LGA	MUAC Categories						Total
	Green (≥12.5cm)		Yellow (11.5 cm - 12.5cm)		Red (<11.5cm)		
	Inaccessible	Accessible	Inaccessible	Accessible	Inaccessible	Accessible	
Bama	8	28	1	2	0	1	40
Dikwa	0	1	0	0	0	0	1
Gwoza	16	9	2	0	0	0	27
Maiduguri	0	1	0	0	0	1	2
Mobbar	0	10	0	1	0	0	11
Monguno	0	10	0	3	0	0	13
Ngala	0	6	0	0	0	0	6
Total	24	65	3	6	0	2	100

■ Nourished

■ Moderate Acute Malnutrition (MAM)

■ Severe Acute Malnutrition (SAM)

Table 1. Details of movements by locations of assessment and locations of arrival/departure - only movements with at least 27 persons are listed below

Tracking location			Movement location					
STATE	LGA	WARD	STATE	LGA	WARD	ARRIVAL	DEPARTURE	
ADAMAWA	GIREI	GIREI I	ADAMAWA	MADAGALI	GULAK	29	-	
		JERA BONYO		MICHIKA	MICHIKA I	-	31	
				MICHIKA	MICHIKA I	-	27	
	HONG	BANGSHIKA	ADAMAWA	MADAGALI	DUHU/SHUWA	27	-	
	MADAGALI	DUHU/SHUWA	ADAMAWA	GIREI	GIREI I	-	29	
				HONG	UBA	-	74	
				MUBI NORTH	VIMTIM	-	53	
				MUBI SOUTH	NASARAWO	-	41	
				MADAGALI	GULAK	-	40	
				MUBI NORTH	YELWA	-	47	
	MAYO BELWA	MAYO FARANG	ADAMAWA	DEMSA	BILLE	-	38	
				MAYO BELWA	MAYO BELWA	-	44	
	MICHIKA	MICHIKA I	ADAMAWA	GIREI	GIREI I	31	-	
				JERA BANYO	27	-		
HONG				KWARHI	-	151		
	MINSKI WURO NGIKI		MICHIKA	VI - BOKA	-	88		
MUBI SOUTH	NASSARAWO	ADAMAWA	MADAGALI	DUHU/SHUWA	41	-		
	YELWA			GULAK	36	-		
YOLA SOUTH	NAMTARI	ADAMAWA	MADAGALI	GULAK	27	-		
BORNO	ASKIRA/UBA	ASKIRA EAST	BORNO	CHIBOK	GATAMARWA	-	317	
		CHULL/RUMIRGO			GATAMARWA	-	43	
		HUSARA TAMPUL		ASKIRA/UBA	KOPA/MULTHFU	41	-	
		MUSSA			CHULL/RUMIRGO	29	-	
		UBA		ADAMAWA	MADAGALI	GULAK	30	-
				BORNO	ASKIRA/UBA	KOPA/MULTHFU	56	-
		ZADAWA		BORNO	CHIBOK	KAUTIKARI	67	-
	BAMA	BUDUWA/BULACHIRI	CAMEROON	DAMBOA	GUMSURI/MISAKIRBU	28	-	
	GWOZA	PULKA/BOKKO	BORNO	MARWA	MORA	27	-	
	JERE	OLD MAIDUGURI	BORNO	BAMA	DIPCHARI/JERE/KOTEN	45	-	
	JERE	OLD MAIDUGURI	BORNO	JERE	HADAMARI	156	-	
	JERE	OLD MAIDUGURI	BORNO	JERE	HADAMARI	142	-	
	KALA BALGE	RANN	CAMEROON	MARWA	KUSURI	115	-	
	MAIDUGURI	MAISANDARI	BORNO	JERE	BALE GALTIMARI	29	-	
					DALA LAWANTI	1,325	-	
MOBBAR	DAMASAK	R.NIGER	DIFFA	SHETTIMARI	54	-		
MONGUNO	MONGUNO	BORNO	KUKAWA	KUKAWA	96	-		

The depiction and use of boundaries, geographic names, and related data shown on maps and included in this report are not warranted to be error free nor do they imply judgment on the legal status of any territory, or any endorsement or acceptance of such boundaries by IOM.

For more information or to report an alert, please contact:

Henry Kwenin, DTM Project Coordinator: hkwenin@iom.int | +234 903 8852 524 Dave Bercasio, Emergency Coordinator: dbercasio@iom.int | +234 907 5070 001 DTM information products: <http://nigeria.iom.int/dtm>