

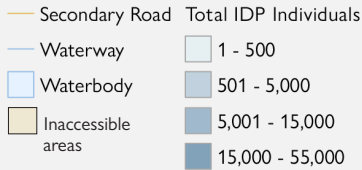


DTM

RAPID RESPONSE ASSESSMENT EAST & WEST WELLEGA: ROUND 2

DATA COLLECTION: 1 — 10 APRIL 2019

THE UN MIGRATION AGENCY

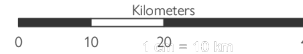


OVERVIEW OF DISPLACEMENT

RRA Round 2 - East & West Wellega Zones

1:1,000,000

1 cm = 10 km



Disclaimer : This map is for illustration purposes only. Names and boundaries on this map do not imply official endorsement or acceptance by IOM.

Source Data : ESRI, IOM, UNJLC

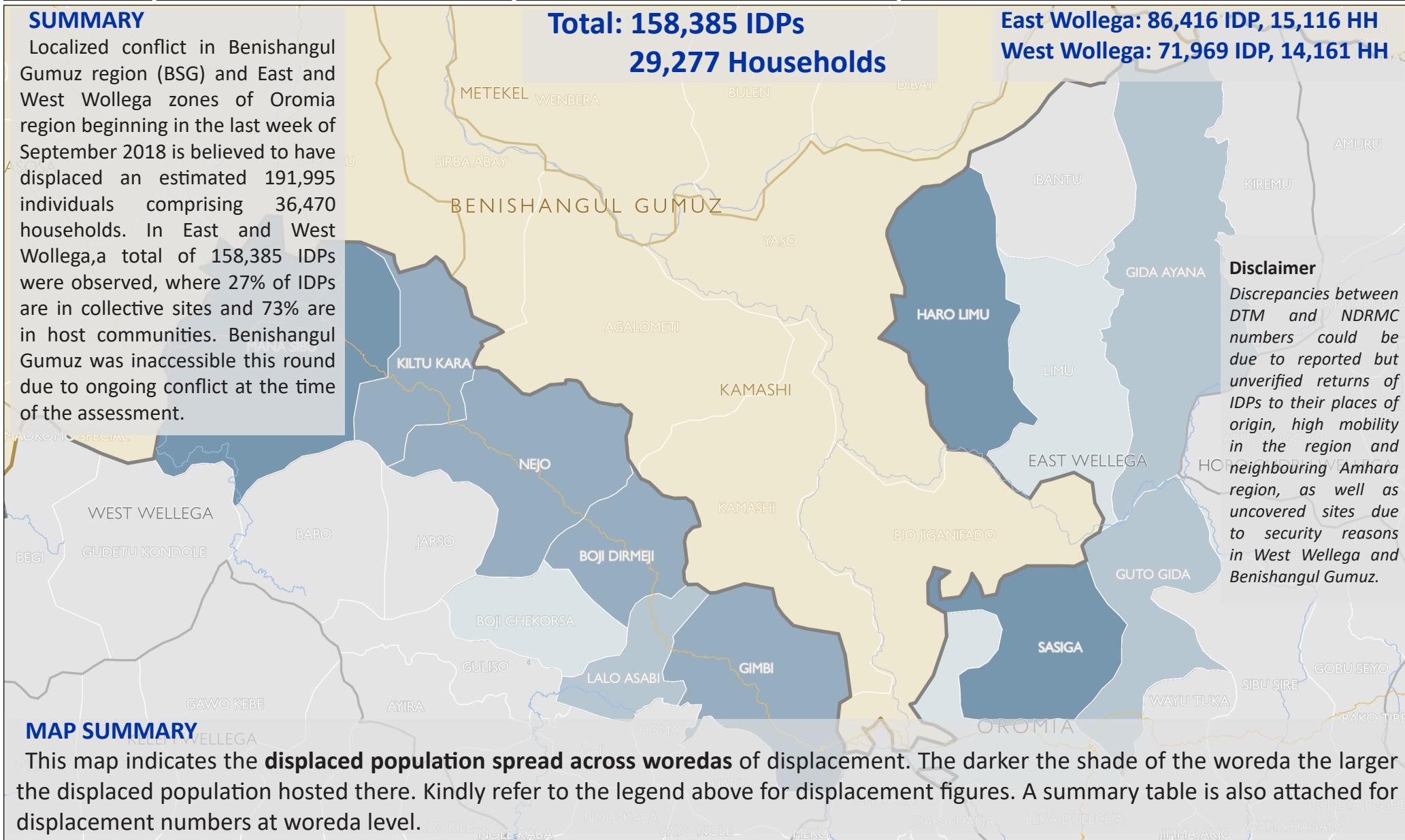
Map Production Date : 29 April 2019
displacement.iom.int/ethiopia | dtmethiopia@iom.int

SUMMARY

Localized conflict in Benishangul Gumuz region (BSG) and East and West Wollega zones of Oromia region beginning in the last week of September 2018 is believed to have displaced an estimated 191,995 individuals comprising 36,470 households. In East and West Wollega, a total of 158,385 IDPs were observed, where 27% of IDPs are in collective sites and 73% are in host communities. Benishangul Gumuz was inaccessible this round due to ongoing conflict at the time of the assessment.

Total: 158,385 IDPs
29,277 Households

East Wollega: 86,416 IDP, 15,116 HH
West Wollega: 71,969 IDP, 14,161 HH



Disclaimer

Discrepancies between DTM and NDRMC numbers could be due to reported but unverified returns of IDPs to their places of origin, high mobility in the region and neighbouring Amhara region, as well as uncovered sites due to security reasons in West Wollega and Benishangul Gumuz.

MAP SUMMARY

This map indicates the **displaced population spread across woredas** of displacement. The darker the shade of the woreda the larger the displaced population hosted there. Kindly refer to the legend above for displacement figures. A summary table is also attached for displacement numbers at woreda level.



DTM

RAPID RESPONSE ASSESSMENT EAST & WEST WELLEGA: ROUND 2

DATA COLLECTION: 1 — 10 APRIL 2019

THE UN MIGRATION AGENCY



	Secondary Road	Indicator Score
	Waterway	< 2
	Waterbody	2 - 10
	Inaccessible areas	11 - 20
		21 - 40

OVERVIEW OF DISPLACEMENT NEEDS RRA Round 2 - East & West Wellega Zones

1:1,000,000 1 cm = 10 km



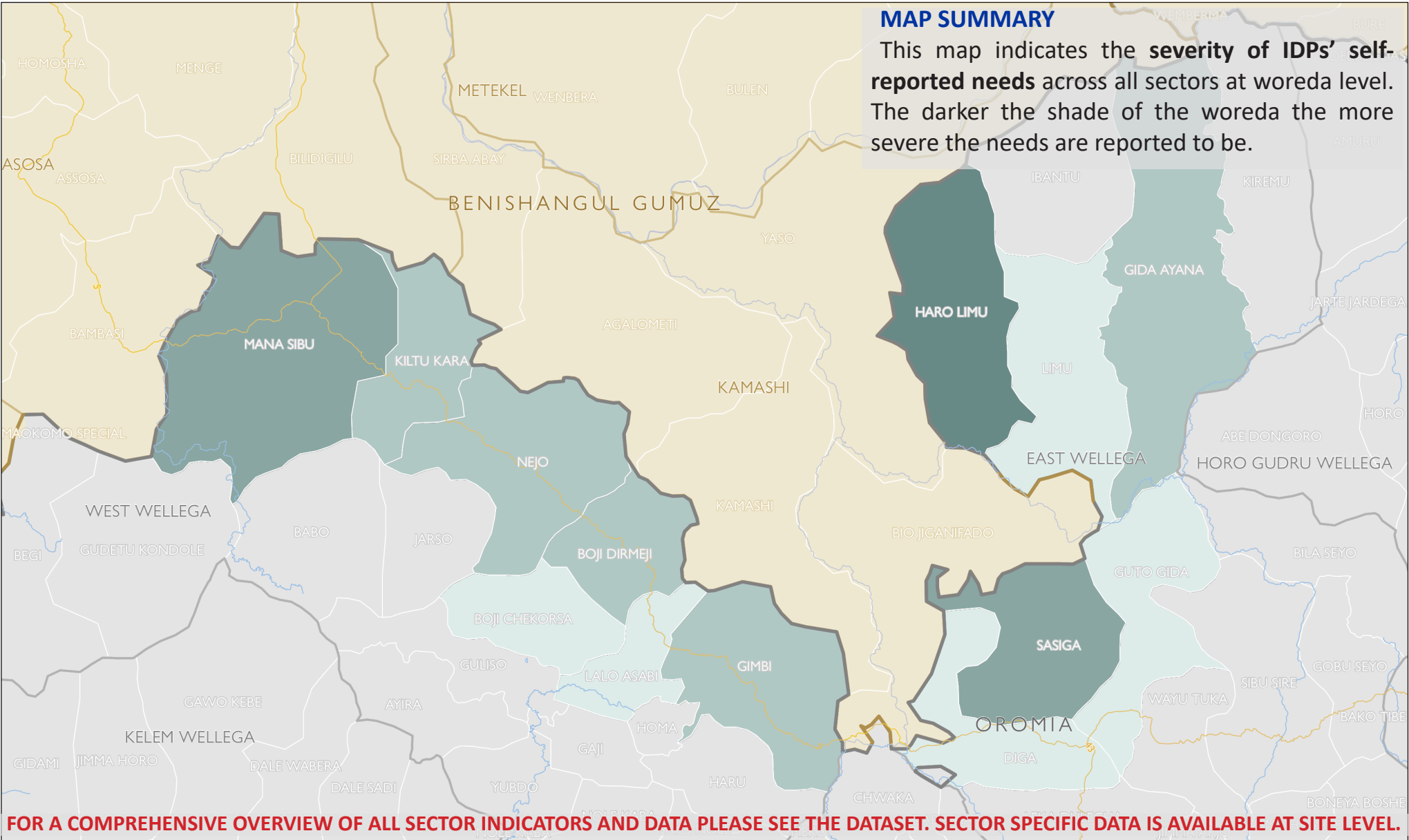
Disclaimer : This map is for illustration purposes only. Names and boundaries on this map do not imply official endorsement or acceptance by IOM.

Source Data : ESRI, IOM, UNJLC

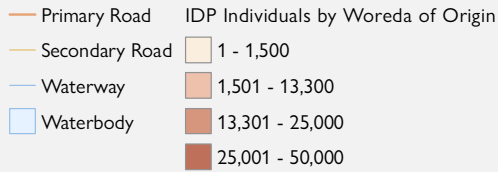
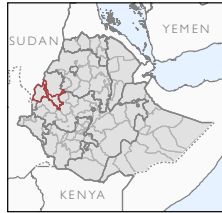
Map Production Date : 29 April 2019
displacement.iom.int/ethiopia | dtmethiopia@iom.int

MAP SUMMARY

This map indicates the **severity of IDPs' self-reported needs** across all sectors at woreda level. The darker the shade of the woreda the more severe the needs are reported to be.

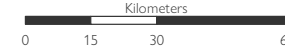


FOR A COMPREHENSIVE OVERVIEW OF ALL SECTOR INDICATORS AND DATA PLEASE SEE THE DATASET. SECTOR SPECIFIC DATA IS AVAILABLE AT SITE LEVEL.



PLACE OF ORIGIN OF IDPS RRA Round 2 - East & West Wellega Zones

1:1,650,000 1 cm = 17 km



Disclaimer : This map is for illustration purposes only. Names and boundaries on this map do not imply official endorsement or acceptance by IOM.

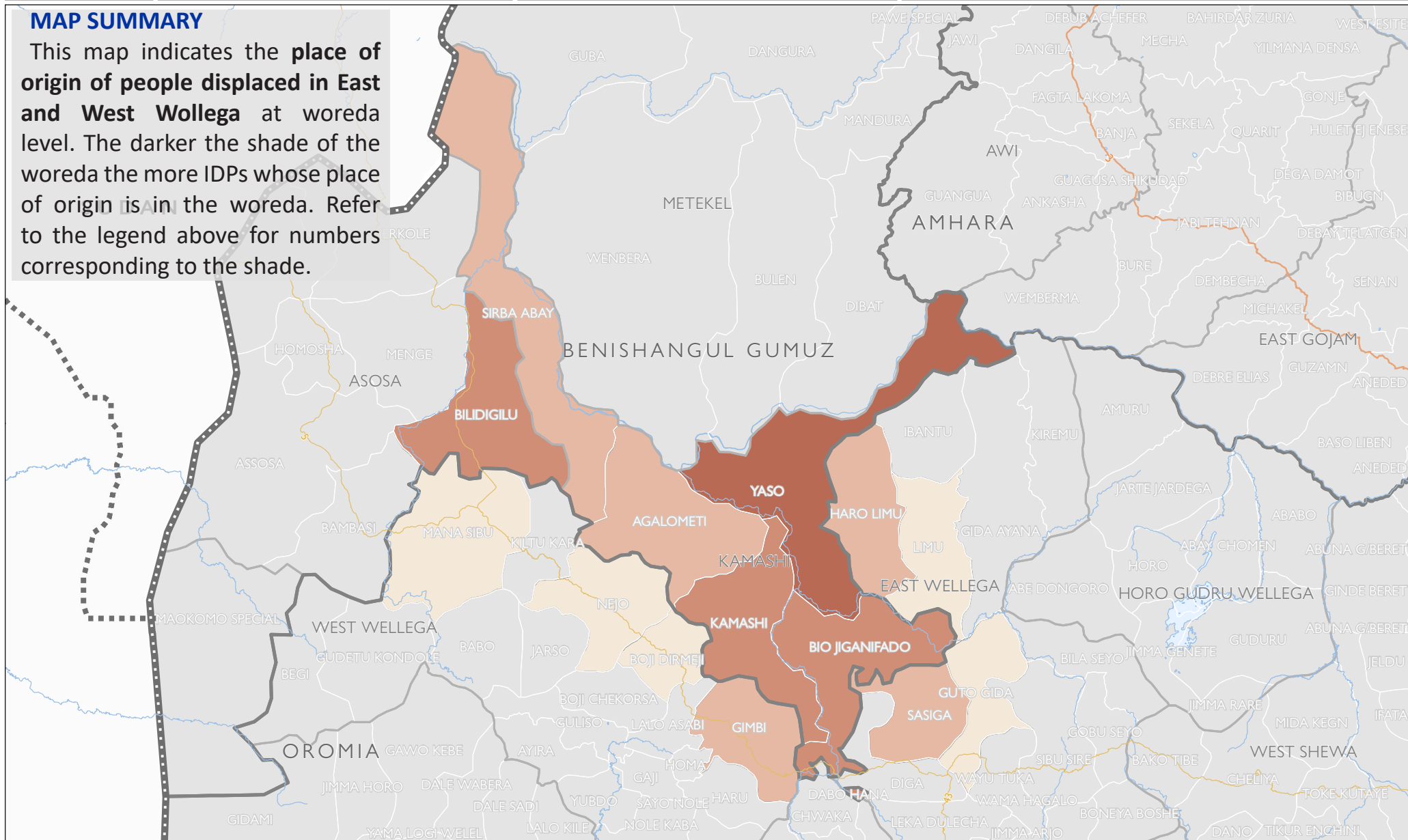
Source Data : ESRI, IOM, UNJLC

Map Production Date : 29 April 2019

displacement.iom.int/ethiopia | dtmethiopia@iom.int

MAP SUMMARY

This map indicates the **place of origin of people displaced in East and West Wollega** at woreda level. The darker the shade of the woreda the more IDPs whose place of origin is in the woreda. Refer to the legend above for numbers corresponding to the shade.



Displacement Overview

East Wellega hosts a larger IDP caseload than West Wellega with a total of 86,416 IDPs or 15,116 households. The displacement in East Wellega is spread across 27 collective sites and 37 host communities in 7 woredas. In East Wellega, Haro Limu and Sasiga woredas host the largest numbers of IDPs with 51,683 IDPs and 26,146 IDPs respectively. In Haro Limu, the large majority of IDPs (90%) are in host communities, while the remaining (10%) are in collective sites. In Sasiga, 47% of IDPs are in collective sites while 53% are in host communities.

West Wellega hosts a total of 71,969 IDPs or 14,161 households. Displacement in West Wellega is spread across 16 collective sites and 59 host communities in 12 woredas. In West Wellega, Mana Sibu hosts the largest numbers of IDPs with 19,192 IDPs, where 25% of IDPs are in collective sites and 75% are in host communities. The second and third largest displacement caseloads in West Wellega can be found in Boji Dirmeji and Kiltu Kara with 9,856 IDPs and 9,745 IDPs respectively.

Ongoing conflict in Benishangul Gumuz prevented the assessment of displacement figures during the time of the data collecting period. This may change in the next round.

Methodology

The Rapid Response Assessment is conducted at site level on a monthly basis. The tool is designed to capture timely data on displacement to inform emergency responses and involves site and host community visits conducted by DTM enumerators who are supervised by DTM field project assistants. Site visits are often conducted in coordination with local and regional authorities who facilitate access to sites and host communities. The involvement of local and regional authorities also helps to facilitate the endorsement of DTM data by ensuring transparent and observed data collection at site level.

Data is collected from key informants and through focus group discussions. DTM key informants include a wide range of individuals such as teachers, local health workers, IDP community leaders and many more. Key informants are selected based on their sphere of knowledge, access to the site and displaced community and credibility. Focus group discussions are conducted with members of the IDP community who represent different demographic fields. Household samples and a demographic calculator are used to collect information on age and sex breakdowns.

For further information, data, analysis and questions please feel free to contact the DTM Ethiopia Team in Addis Ababa at dtmethiopia@iom.int or visit the DTM Ethiopia website: displacement.iom.int/ethiopia

Displacement Tracking Matrix (DTM) East/West Wellega of Oromia Region RRA R2- Summary Table of Displacement

Round	Region	Zone	Woreda	Collective Site			Host Community			Total HH	Total Individuals	Total Sites	
				HH	Individuals	# of Sites	HH	Individuals	# of Host Communities				
RRA R2 (April 2019)	Oromia	East Wellega	Haro Limu	1,081	5,157	10	7,563	46,526	16	8,644	51,683	26	
	Oromia	East Wellega	Sasiga	2,037	12,332	9	2,502	13,814	10	4,539	26,146	19	
	Oromia	East Wellega	Limu	11	68	1	66	371	1	77	439	2	
	Oromia	East Wellega	Gida Ayana	70	350	1	1,129	4,327	2	1,199	4,677	3	
	Oromia	East Wellega	Guto Gida	73	506	5	56	242	1	129	748	6	
	Oromia	East Wellega	Diga	56	280	1	70	209	2	126	489	3	
	Oromia	East Wellega	Nekemte Town	-	-	-	402	2,234	5	402	2,234	5	
	East Wellega Total				3,328	18,693	27	11,788	67,723	37	15,116	86,416	64
	Oromia	West Wellega	Nejo	1,290	6,530	1	-	-	-	1,290	6,530	1	
	Oromia	West Wellega	Lalo Asabi	185	504	1	427	2,362	8	612	2,866	9	
	Oromia	West Wellega	Gimbi Town	394	1,103	1	-	-	-	394	1,103	1	
	Oromia	West Wellega	Mana Sibu	1,025	4,751	4	2,769	14,441	10	3,794	19,192	14	
	Oromia	West Wellega	Kiltu Kara	472	2,265	1	1,216	7,480	11	1,688	9,745	12	
	Oromia	West Wellega	Boji Dirmeji	1,127	4,819	1	867	4,787	9	1,994	9,606	10	
	Oromia	West Wellega	Leta Sibu	168	711	4	64	392	2	232	1,103	6	
	Oromia	West Wellega	Gimbi	-	-	-	1,421	8,289	9	1,421	8,289	9	
	Oromia	West Wellega	Boji Chekorsa	-	-	-	27	92	1	27	92	1	
	Oromia	West Wellega	Mendi Town	154	732	1	1,069	4,703	3	1,223	5,435	4	
	West Wellega Total				4,815	21,415	14	7,860	42,546	53	12,675	63,961	67
	Oromia Total				8,143	40,108	41	19,648	110,269	90	27,791	150,377	131
RRA R1 * (February 2019)	Oromia	West Wellega	Nejo	436	2,243	2	1,015	5,515	5	1,451	7,758	7	
	Oromia	West Wellega	Boji Dirmeji	-	-	-	35	250	1	35	250	1	
	West Wellega Total				436	2,243	2	1,050	5,765	6	1,486	8,008	8
	Oromia Total				436	2,243	2	1,050	5,765	6	1,486	8,008	8
Grand Total				8,579	42,351	43	20,698	116,034	96	29,277	158,385	139	

* Information for uncovered sites in Nejo and Boji Dirmeji for RRA Round 2 were extracted from RRA Round 1.