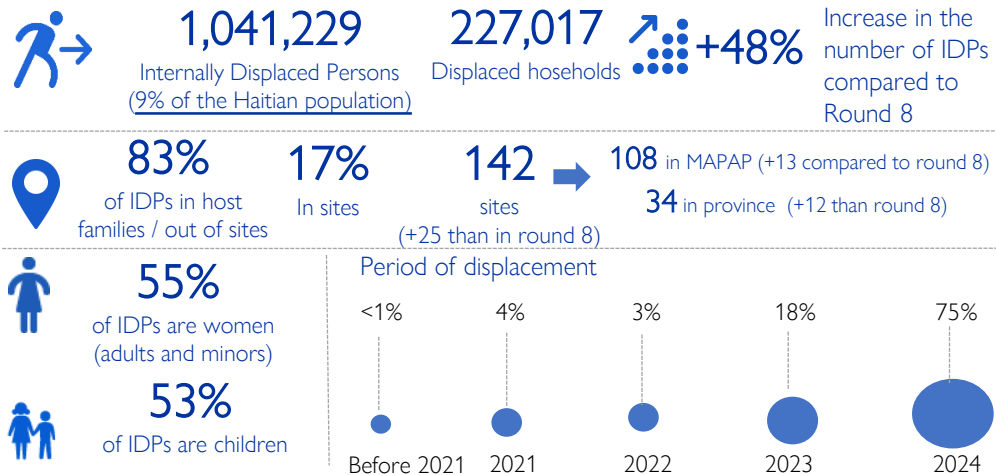
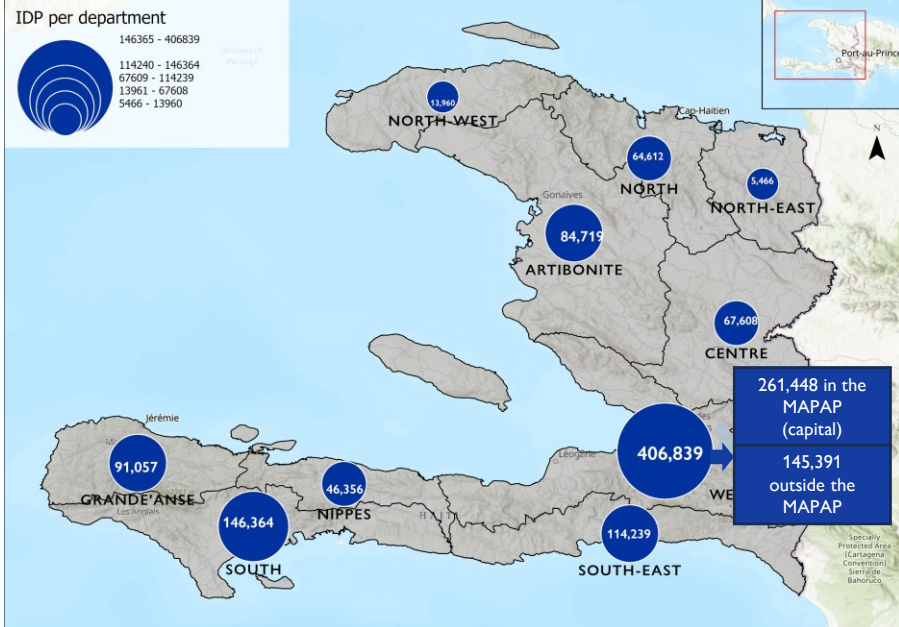


**OVERVIEW OF KEY RESULTS**

Figure 1. Internally Displaced Persons by Department



1. This new DTM mobility tracking exercise (Round 9) indicates a presence of 1,041,000 displaced persons in Haiti, representing a 48% increase compared to the previous exercise (Round 8 – September 2024). Armed violence that occurred during the last quarter of 2024 in several localities across the country is the reason for this increase, particularly in the Metropolitan Area of Port-au-Prince (MAPAP; the capital of the country), the municipality of Archaie, and in the Artibonite department. IDPs in Haiti represent 9% of the Haitian population (for figures on the Haitian population: UNFPA, 2024).

2. Unlike previous rounds where increases were more significant in the provinces than in the MAPAP due to substantial flows of people from the capital to the provinces, this round shows a slightly larger increase in the capital than in the provinces: the number of IDPs (Internally Displaced Persons) in the capital increased by 51% compared to 47% in the provinces<sup>1</sup>.
3. In the provinces, significant increases are noted in the Artibonite department, where the number of IDPs almost doubled (a 90% increase), as well as in municipalities outside the capital in the West department (notably those of Léogâne, Cabaret, and Archaie), where the number of IDPs increased by 109%. In total, 75% of IDPs are hosted in the provinces, while 25% are in the capital.
4. The distribution of IDPs in sites and out of sites remains the same as in Round 8: 83% of IDPs are out of sites (mainly staying with host families), and 17% are in sites. Although the number of sites has increased, rising from 117 sites in September 2024 to 142 sites in December.
5. The MAPAP remains the area where the majority of IDPs are in sites (65% of IDPs in the capital are in sites), whereas in the provinces, 99% of IDPs are out of sites. Thus, out of the 142 sites in the country, 108 are located in the MAPAP and 34 in the provinces.
6. The main needs expressed by key informants in places hosting IDPs are, in descending order of priority: food, livelihoods, health, shelter, and water. Notably, there is a difference in the needs expressed in sites compared to those out of sites. In locations hosting IDPs out of sites, the top five needs were food, livelihoods, health, shelter, and water. While in sites, the needs were food, livelihoods, water, health, and shelter.

1. The term "province" refers to all areas of the country outside of the MAPAP, the capital of the country

**IDPs' AGE AND SEX DISAGGREGATION**

Figure 2. IDPs' age and sex disaggregation

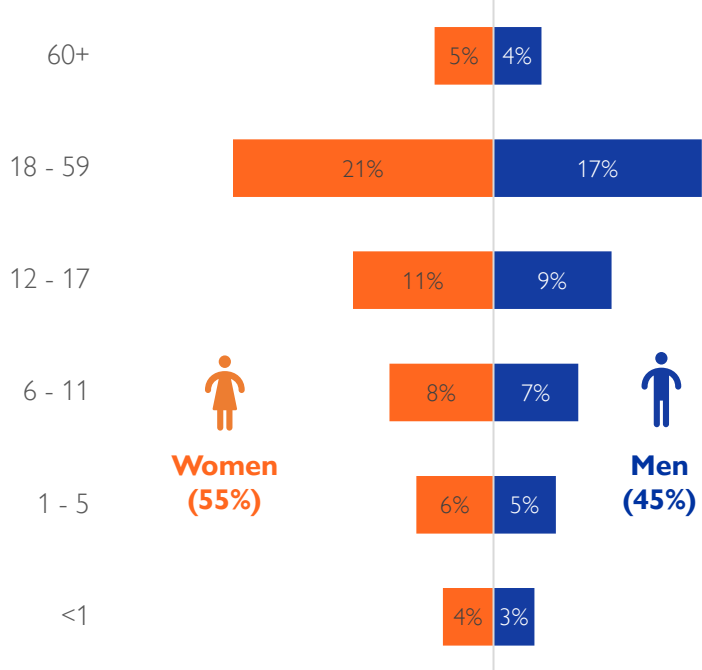
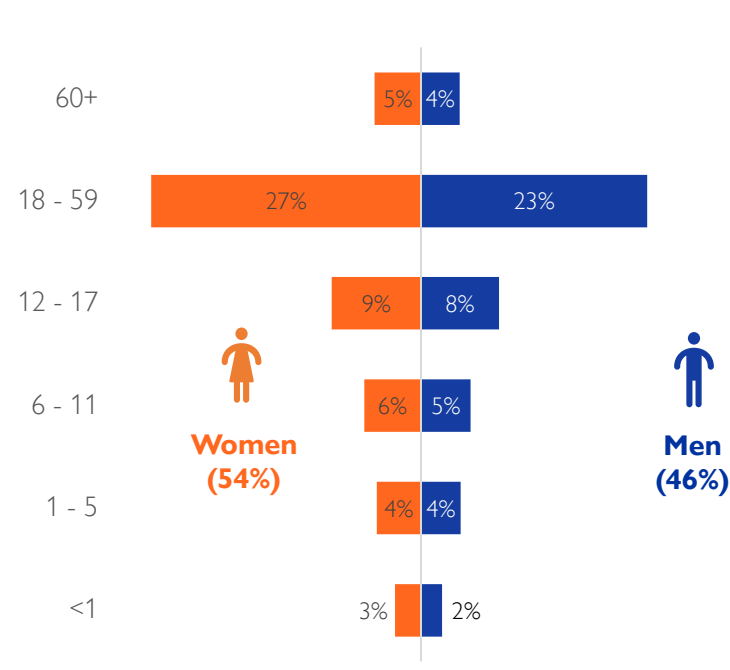


Figure 3. IDPs' age and sex disaggregation for IDPs in sites only



**IDPs' HOST LOCATIONS**

Figure 4. Host departments of IDPs

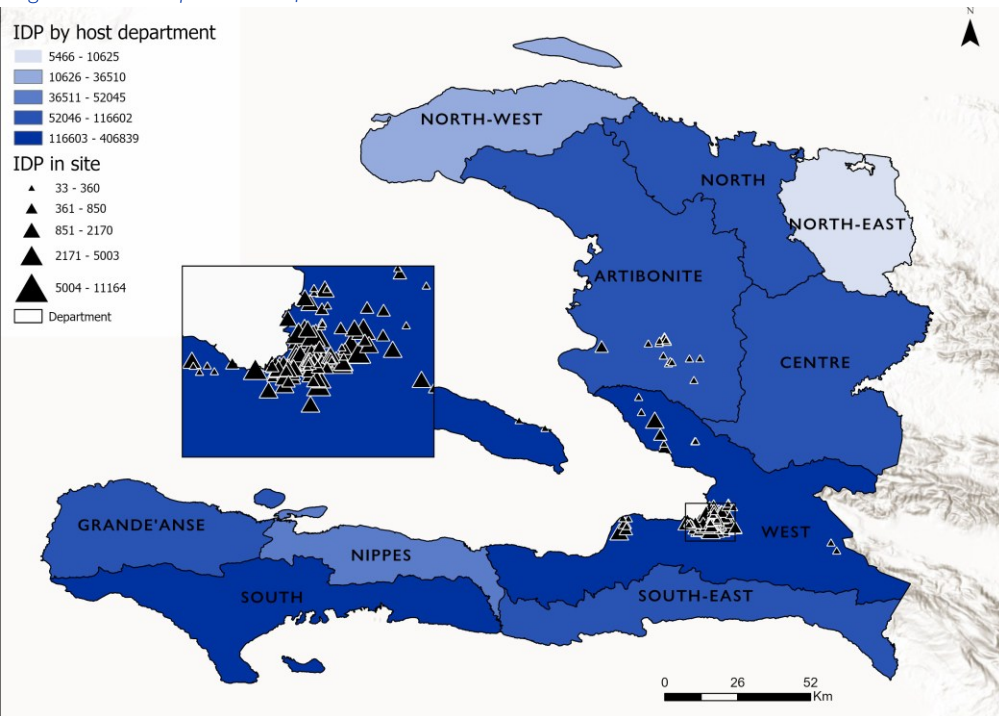


Figure 5. Number and proportion of IDPs in their host regions

Host regions		Displaced households	# of IDPs	% of IDPs
West (39%)	MAPAP	64,543	261,448	25%
	Out of MAPAP	26,549	145,391	14%
Great South (39%)	South	32,476	146,364	14%
	South-East	26,547	114,239	11%
	Grande'Anse	17,461	91,057	9%
Artibonite (8%)	Nippes	11,904	46,356	5%
	Centre	18,876	84,719	8%
Centre (6%)	Artibonite	13,846	67,608	6%
	North	10,209	64,621	6%
Great North (8%)	North-West	3,091	13,960	1%
	North-East	1,515	5,466	1%
	<b>TOTAL</b>	<b>227,017</b>	<b>1,041,229</b>	<b>100%</b>

Figure 6. Proportion of IDPs in host families and sites per host region

Host regions		Total of IDPs	IDPs in host families	IDPs in sites	# of sites
West	MAPAP	261,448	35%	65%	108
	Out of MAPAP	145,391	96%	4%	18
Great South	South	146,364	100%	0%	0
	South-East	114,239	100%	0%	0
	Grande'Anse	91,057	100%	0%	0
Artibonite	Nippes	46,356	100%	0%	0
	Centre	84,719	96%	4%	16
Centre	Artibonite	67,608	100%	0%	0
	North	64,621	100%	0%	0
Great North	North-West	13,960	100%	0%	0
	North-East	5,466	100%	0%	0
	<b>TOTAL</b>	<b>1,041,229</b>	<b>83%</b>	<b>17%</b>	<b>142</b>

Figure 7. IDPs by municipality (admin 2)

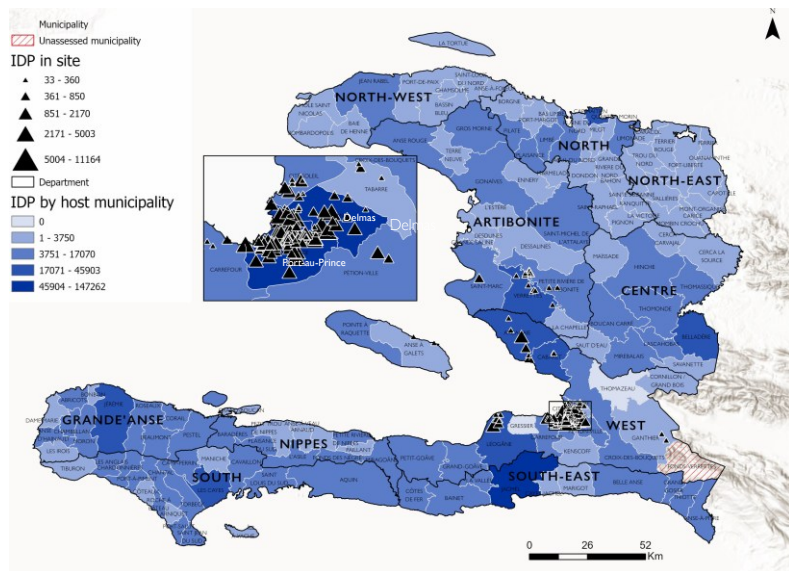


Figure 8. IDPs by municipality section (admin 3)

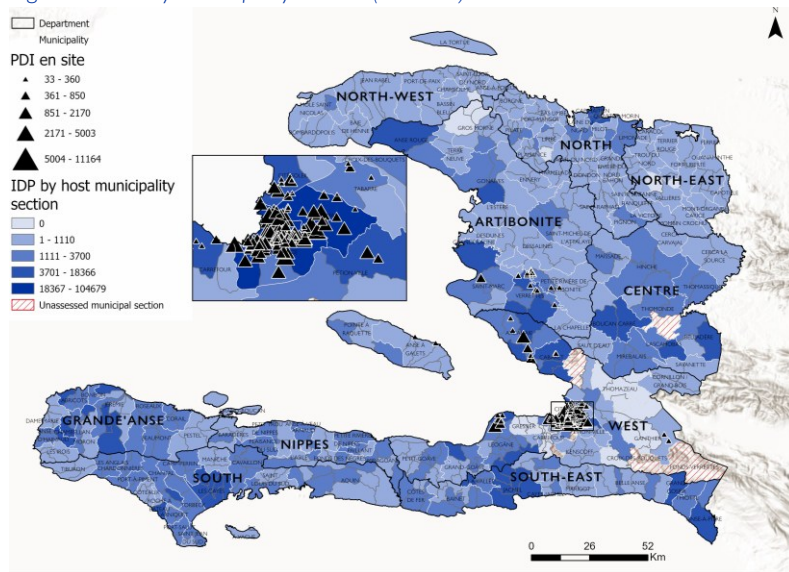


Figure 9. Main IDPs' hosting municipalities

Municipality	Department	# of IDPs	% of IDPs
Port-au-Prince	West	147,262	14%
Delmas	West	79,619	8%
Jacmel	South-East	50,131	5%
Léogâne	West	45,106	4%
Les Cayes	South	39,136	4%
Cabaret	West	37,131	4%
Arcahaie	West	28,764	3%
Verrettes	Artibonite	26,865	3%
Cap-Haïtien	Noth	23,533	2%
Jérémie	Grande'Anse	21,077	2%

Figure 10. Evolution of the displacement situation between 2022 and 2024

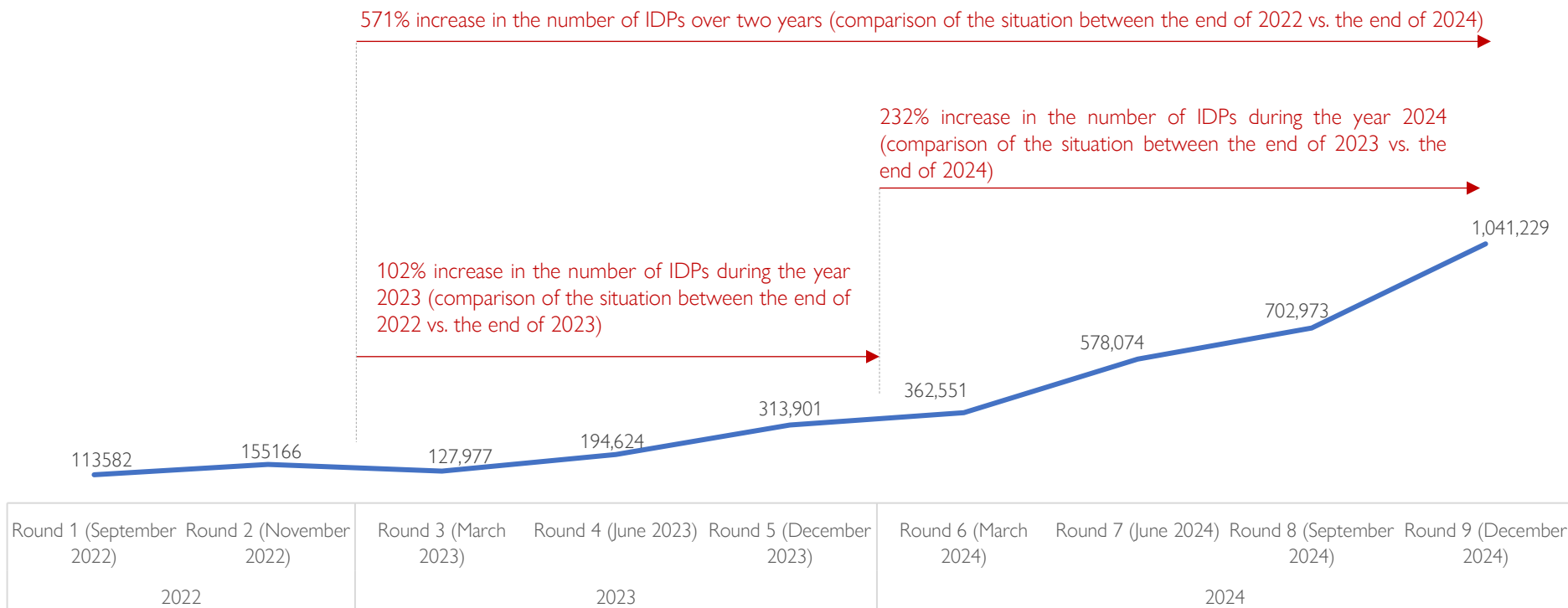




Figure 11. Variations in the number of IDPs between Round 8 and Round 9, by hosting area

Hosting area		# of IDP in Round 8	# of IDP in Round 9	% of variation	# of sites in Round 8	# of sites in Round 9
West	MAPAP	173,156	261,448	+51%	95	108
	Outside MAPAP	69,519	145,391	+109%	15	18
Great South	South	116,602	146,364	+26%	0	0
	South-East	82,366	114,239	+39%	0	0
	Grande'Anse	79,722	91,057	+14%	0	0
	Nippes	36,510	46,356	+27%	3	0
Artibonite	Artibonite	44,566	84,719	+90%	0	0
Centre	Centre	52,045	67,608	+30%	3	16
Great North	North	35,316	64,621	+83%	0	0
	Noth-west	10,625	13,960	+31%	1	0
	North-Est	2,546	5,466	+115%	0	0
<b>TOTAL</b>		<b>702,973</b>	<b>1,041,229</b>	<b>+48%</b>	<b>117</b>	<b>142</b>

Figure 12. Variations in the number of IDPs in the capital vs. in the provinces

Hosting area	# of IDP in Round 8	# of IDP in Round 9	% of variation	# of sites in Round 8	# of sites in Round 9
MAPAM	173,156	261,448	+51%	95	108
Provinces	529,817	779,781	+47%	22	34
<b>TOTAL</b>	<b>702,973</b>	<b>1,041,229</b>	<b>+48%</b>	<b>117</b>	<b>142</b>

**PRIORITY NEEDS**

Figure 13. Priority Needs of IDPs (% of host locations where each need was mentioned among the top 3 priority needs)

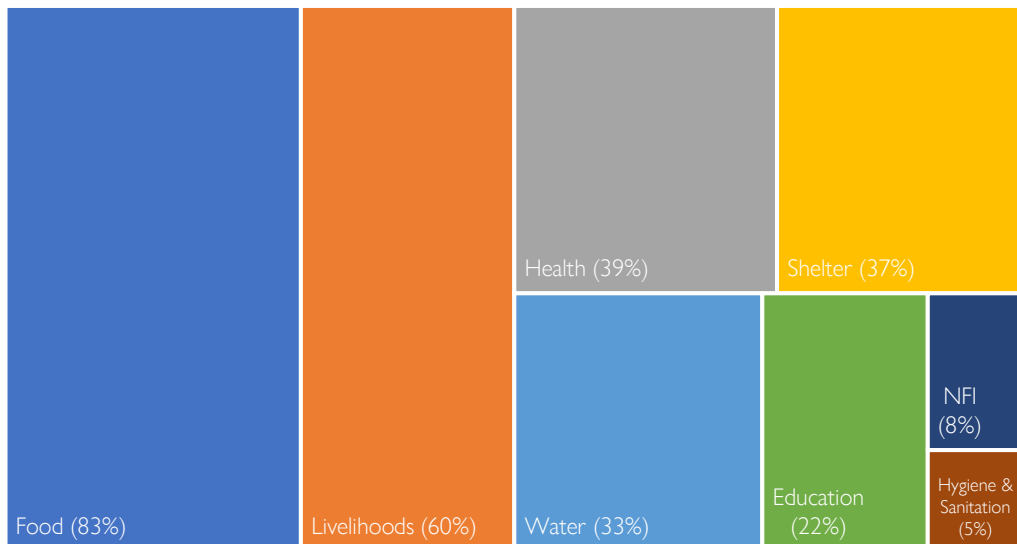


Figure 14. Priority needs of IDPs outside of sites

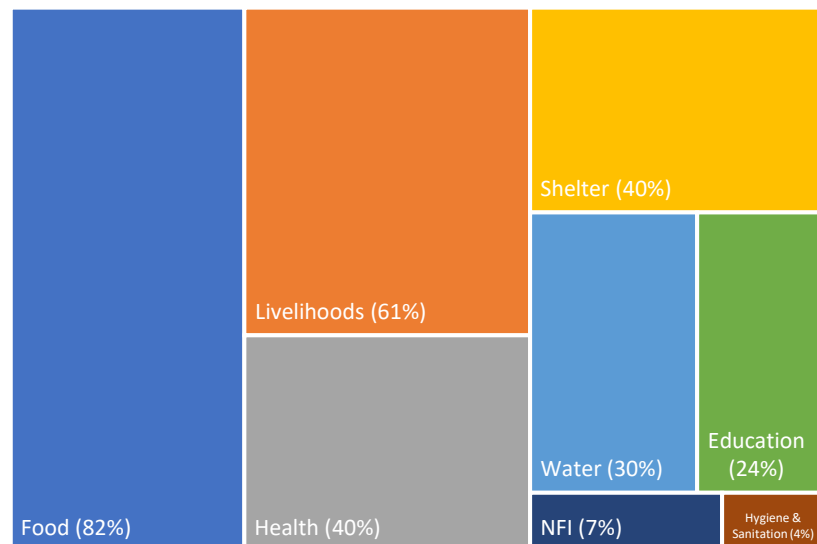
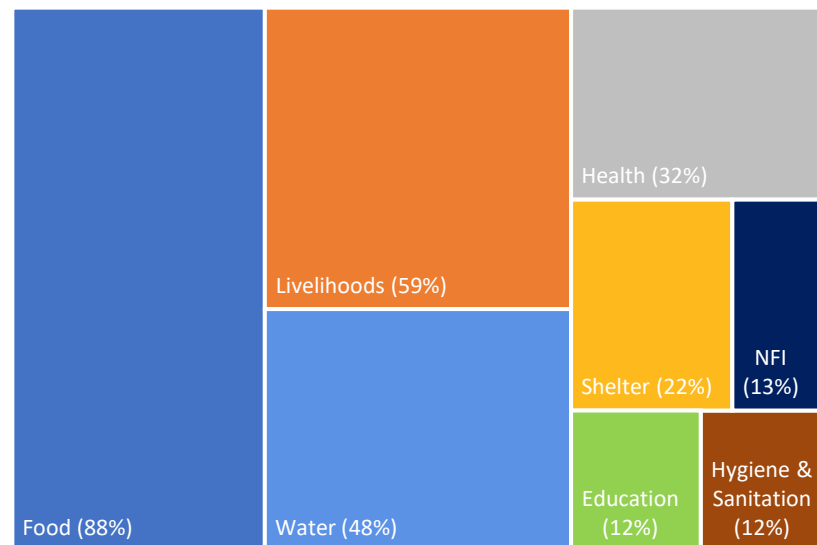


Figure 15. Priority needs of IDPs in sites



In addition to this report, other information products are available to strengthen understanding of the displacement situation in Haiti:

- ✓ A summary information sheet <https://iomdtmhaiti.info/40HGOgh>
- ✓ A report on multi-sectoral assessments in IDPs host locations <https://iomdtmhaiti.info/3QadEQH>
- ✓ The Round 9 detailed dataset <https://iomdtmhaiti.info/42k4PLc>
- ✓ The Round 9 summary dataset <https://iomdtmhaiti.info/40gWLZ1>
- ✓ A multilayer interactive map <https://iomdtmhaiti.info/3Tttljr>
- ✓ The list of spontaneous sites <https://iomdtmhaiti.info/427hvFn>

Disclaimer : This publication was co-funded by the European Union. Its contents are the sole responsibility of IOM and do not necessarily reflect the views of the European Union.

© IOM 2024 Licensed to the European Union under conditions



[DTM.IOM.INT/Haiti](https://DTM.IOM.INT/Haiti)



[dtmhaiti@iom.int](mailto:dtmhaiti@iom.int)

**December 2024**