

DTM IDP Site as 25 Mar. 2015

Site Size HHs

- 1 to 9
- 10 to 49
- 50 to 99
- 100 to 199
- 200 to 499
- 500 to 999
- 1000 +

Roads

- Primary
- Secondary
- Tertiary
- Tracks
- Residential
- Others
- Railways
- Forest
- Waterbodies
- Waterways

Legend

- City
- Town
- Village
- Hamlet
- ADM2 District Level of Interest
- ADM1 Region Level
- ADM2 District Level
- ADM3 Traditional Area Level

DTM 1st ROUND | MALAWI

DTM as 25th March 2015

Southern Region_3

District : Nsanje_11

Sources : National Office Statistics Malawi, OSM, IOM, IOM DTM

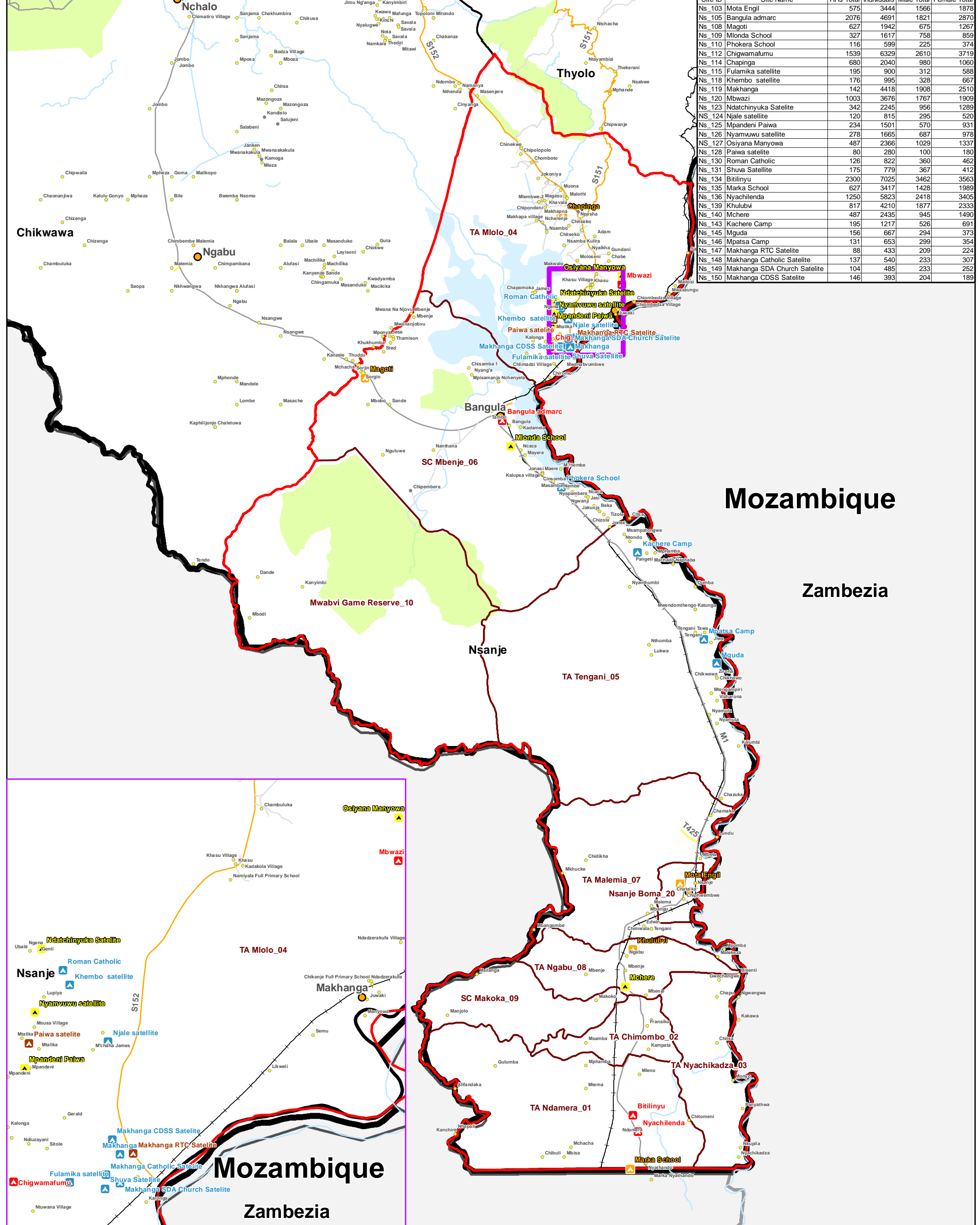
This map is for illustration purposes only. Names and boundaries on this map do not imply official endorsement or acceptance by IOM.

www.iom.int / prd@iom.int

1:285,000

1 cm = 3 km

0 5 10 20 Kilometers



Site ID	Site Name	HHs Total	Individuals	Male Total	Female Total
Ns_103	Mota Engil	575	3444	1566	1878
Ns_105	Bangula admarc	2076	4691	1821	2870
Ns_108	Magoti	627	1942	675	1267
Ns_109	Mlanda School	327	1617	758	859
Ns_110	Phokera School	116	599	225	374
Ns_112	Chigwamafumu	1539	6329	2610	3719
Ns_114	Chapinga	680	2040	980	1060
Ns_115	Fulamika satellite	195	900	312	588
Ns_118	Khembo satellite	176	995	328	667
Ns_119	Makhanga	142	4418	1908	2510
Ns_120	Mbwazi	1003	3676	1767	1909
Ns_123	Ndatchinyuka Satellite	342	2245	956	1289
Ns_124	Njale satellite	120	815	295	520
Ns_125	Mpandeni Paiwa	234	1501	570	931
Ns_126	Nyamvuwu satellite	278	1665	687	978
Ns_127	Osiyana Manyowa	487	2366	1029	1337
Ns_128	Paiwa satellite	80	280	100	180
Ns_130	Roman Catholic	126	822	360	462
Ns_131	Shuva Satellite	175	779	367	412
Ns_134	Bitilinyu	2300	7025	3462	3563
Ns_135	Marka School	627	3417	1428	1989
Ns_136	Nyachilenda	1250	5823	2418	3405
Ns_139	Khulubvi	817	4210	1877	2333
Ns_140	Mchere	487	2435	945	1490
Ns_143	Kachere Camp	195	1217	526	691
Ns_145	Mguda	156	667	294	373
Ns_146	Mpatsa Camp	131	653	299	354
Ns_147	Makhanga RTC Satellite	88	433	209	224
Ns_148	Makhanga Catholic Satellite	137	540	233	307
Ns_149	Makhanga SDA Church Satellite	104	485	233	252
Ns_150	Makhanga CDSS Satellite	146	393	204	189