

EMERGENCY TRACKING TOOL (ETT)

DTM Emergency Tracking Tool (ETT) is deployed to track and provide up-to-date information on sudden displacement and other population movements

ETT Report: No. 116 | 22 - 28 April 2019

Movements

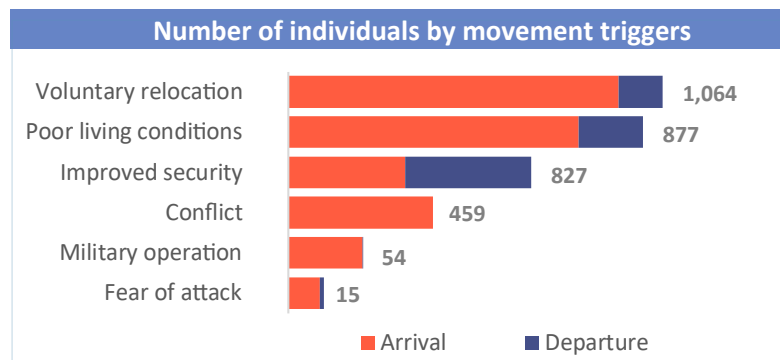


New Arrival Screening by Nutrition Partners

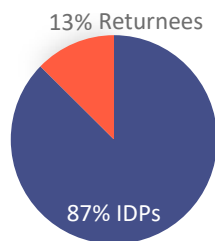


Within the period of 22-28 April 2019, a total of 2,770 movements were recorded, including 2,226 arrivals and 544 departures. Arrivals were recorded at locations in Askira/Uba, Bama, Biu, Chibok, Dikwa, Gwoza, Jere, Kaga, Mafa, Maiduguri, Mobbar, Monguno and Ngala Local Government Areas (LGAs) of Borno state and locations in Demsa, Fufore, Girei, Gombi, Hong, Lamurde, Madagali, Maiha, Mayo Belwa, Michika, Mubi North, Mubi South, Numan, Song, Yola North and Yola South LGAs of Adamawa state. Departures were recorded at Askira/Uba LGA of Borno state, Demsa, Fufore, Girei, Gombi, Hong, Madagali, Maiha, Michika, Mubi North, Mubi South, Numan and Yola North LGAs of Adamawa state.

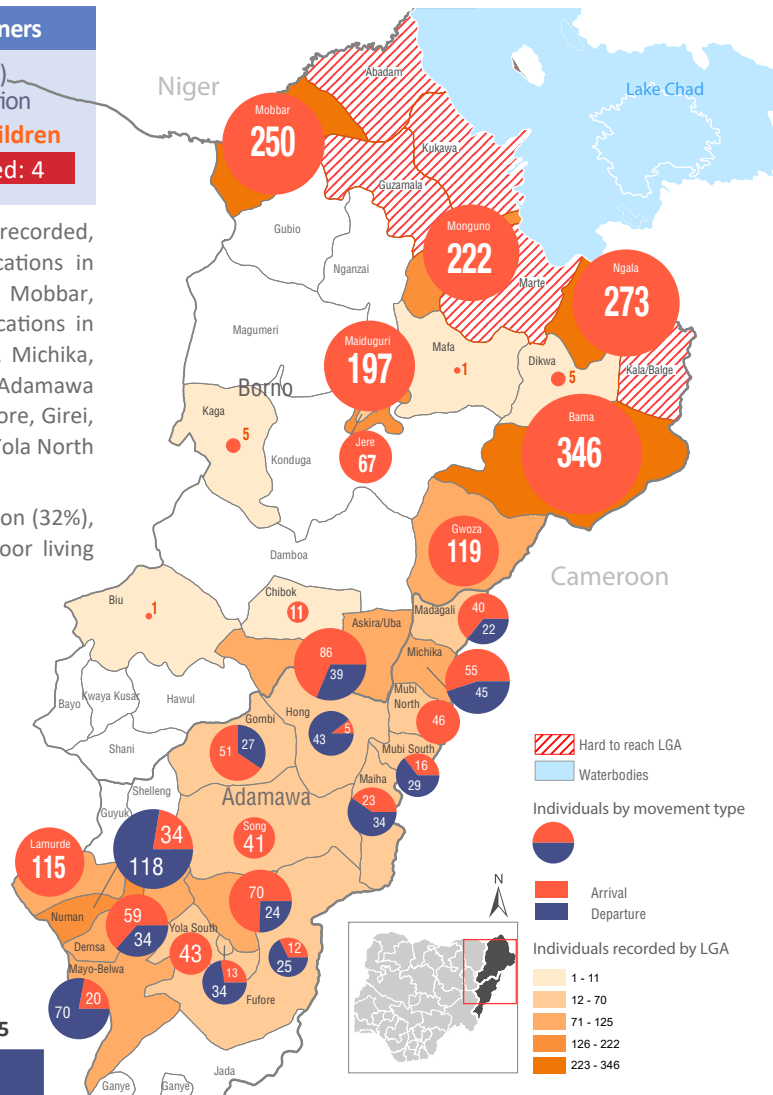
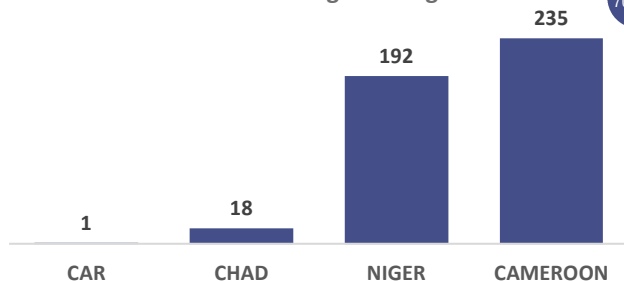
ETT assessments identified the following movement triggers: voluntary relocation (32%), improved security (14%), fear of attack (2%), military operation (25%) and poor living conditions (27%).



Affected population



Arrivals from Neighbouring Countries



Summary of major movements

Bama: 346 arrivals were recorded in Bama LGA of Borno state. These include 86 arrivals from Pulka ward of Gwoza LGA, 76 arrivals from Marwa in Cameroon, 18 arrivals from Bongor in Chad and 158 arrivals from Soye, Kote and Baduwa wards of Bama LGA tracked at Shehuri ward of Bama LGA. 32% of the new arrivals reported to have relocated due to poor living conditions while 68% relocated voluntarily.

Ngala: 273 arrivals were recorded in Ngala LGA of Borno state. These include 138 arrivals from Rann ward of Kala-Balge LGA of Borno state and 135 arrivals from Marwa in Cameroon. 98% of the new arrivals reported to have relocated due to poor living conditions while 2% relocated voluntarily.

Mobbar: 250 arrivals were recorded in Mobbar LGA of Borno state. The new arrivals were all from Diffa in Niger Republic and they all relocated voluntarily to Mobbar LGA.

Monguno: 222 arrivals were recorded in Monguno LGA of Borno state. These include 151 arrivals from Baga ward and 71 arrivals from Kukawa ward both in Kukawa LGA of Borno state. 75% of the new arrivals reported to have relocated due to military operation while 25% relocated due to the ongoing conflict.

Jere: 197 arrivals were recorded in Jere LGA of Borno state. The new arrivals were all from Jajari in Hamadari ward of Jere LGA and were tracked at Medinatu in Old Maiduguri ward of Jere LGA of Borno state. The new arrivals reported to have relocated due to the ongoing conflict.

New Arrival Malnutrition Screening Summary (children 6-59 months)

An exhaustive nutrition screening using mid-upper arm circumference (MUAC) and Oedema for acute malnutrition was conducted by Nutrition Sector partners for 262 children of 6-59 months. Of the 262 children screened, the MUAC reading was: 4 children (2 from Inaccessible and 2 from accessible area) were in the Red category, 14 were in the Yellow category and 244 were measured in the Green category. No case of Oedema was reported in the 5 LGAs.

The results also include 75 children from neighbouring Cameroon, Chad and Niger (25 moved to Bama, 35 to Mobbar, and 15 to Ngala). Out of the 62 children measured, 1 child was in the red category, 54 were in the green category and 7 children were in the yellow category. All children found with severe acute malnutrition have been admitted for treatment. The data presented is not surveillance results and should be interpreted with caution.

LGA	MUAC Categories						Total
	Green (≥12.5cm)		Yellow (11.5 cm - 12.5cm)		Red (<11.5cm)		
	Inaccessible	Accessible	Inaccessible	Accessible	Inaccessible	Accessible	
Bama	15	92	0	2	2	0	111
Gwoza	14	8	4	0	0	0	26
Mobbar	0	28	0	5	0	2	35
Monguno	0	27	0	0	0	0	27
Ngala	0	60	0	3	0	0	63
Total	29	215	4	10	2	2	262

■ Nourished

■ Moderate Acute Malnutrition (MAM)

■ Severe Acute Malnutrition (SAM)

Table 1. Details of movements by locations of assessment and locations of arrival/departure - only movements with at least 21 persons are listed below

STATE	Tracking location		Movement location					
	LGA	WARD	STATE	LGA	WARD	ARRIVAL	DEPARTURE	
ADAMAWA	DEMSA	DONG	ADAMAWA	DEMSA	DONG	32	-	
		KPASHAM	TARABA	ABBARE	KONA	-	34	
	GIREI	GIREI 1	ADAMAWA	GIREI	GERENG WARD	23	-	
		MODIRE-VINIKLANG		MICHIKA	MICHIKA 1	-	24	
	GOMBI	GOMBI SOUTH	ADAMAWA	JADA	MUBULO	32	-	
	LAMURDE	LAMURDE	ADAMAWA	LAMURDE	GYAWANA	29	-	
					LAMISLA/JABARMARI	69	-	
	MADAGALI	K/WURO NGAYANDI	ADAMAWA	HONG	UBA	40	-	
	MAYO BELWA	MAYO BELWA	ADAMAWA	MADAGALI	GULAK	-	22	
	MAYO BELWA	MAYO BELWA	ADAMAWA	MAYO BELWA	MAYO BELWA	-	29	
MICHIKA	MICHIKA 1	ADAMAWA	GIREI	GIREI 1	25	-		
NUMAN	BOLKI	ADAMAWA	BORNO	ASKIRA/UBA	KOPA/MULTHFU	-	28	
			ADAMAWA	DEMSA	KPASHAM	34	-	
	NUMAN 1	ADAMAWA	NUMAN	BOLKI	-	24		
	SABON PEGI	ADAMAWA	DEMSA	DONG	-	85		
BORNO	ASKIRA/UBA	KOPA/MULTHAFU	ADAMAWA	MICHIKA	MICHIKA 1	28	-	
		NGULDE	BORNO	GOMBI	GOMBI NORTH	41	-	
		UVU/UDA	BORNO	GWOZA	BITA IZGHE	-	22	
	BAMA	BAMA	BORNO	GWOZA	PULKA	48	-	
			CAMEROON	MARWA	KOLOFATA	45	-	
		SHEHURI	BORNO	BAMA	MARWA	MOKOLO	31	-
					BAMA	BUDUWA	46	-
					BAMA	KOTE	57	-
					BAMA	SOYE	55	-
	GWOZA	BORNO	BAMA	PULKA	38	-		
	PULKA/BOKKO	BORNO	BAMA	GONYERE	24	-		
	JERE	OLD MAIDUGURI	BORNO	JERE	HADAMARI	197	-	
	MAIDUGURI	BOLORI 1	BORNO	MONGUNO	MONGUNO	24	-	
			CAMEROON	MARWA	MORA	21	-	
	MOBBAR	DAMASAK CENTRAL	ADAMAWA	NIGER	DIFFA	58	-	
			NIGER	DIFFA	SHETTIMARI	192	-	
	MONGUNO	MONGUNO	BORNO	KUKAWA	BAGA	151	-	
BORNO			KUKAWA	KUKAWA	71	-		
NGALA	NGALA	BORNO	KALA-BALGE	RANN	138	-		
		CAMEROON	MARWA	BIYAMO	58	-		
				KUSSIRI	29	-		
				WAZA	42	-		

The depiction and use of boundaries, geographic names, and related data shown on maps and included in this report are not warranted to be error free nor do they imply judgment on the legal status of any territory, or any endorsement or acceptance of such boundaries by IOM.

For more information or to report an alert, please contact:

Henry Kwenin, DTM Project Coordinator: hkwenin@iom.int | +234 903 8852 524

Dave Bercasio, Emergency Coordinator: dbercasio@iom.int | +234 907 5070 001

DTM information products: <http://nigeria.iom.int/dtm>