

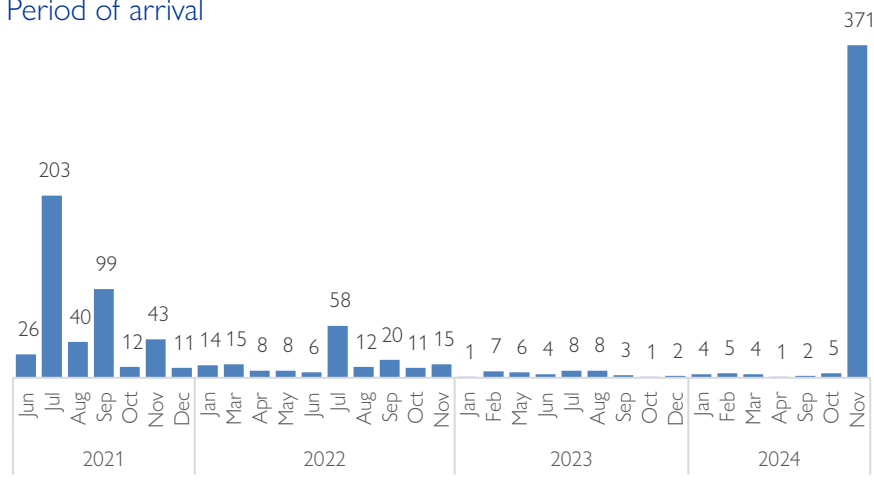
Data collection: November 2024

## Overview

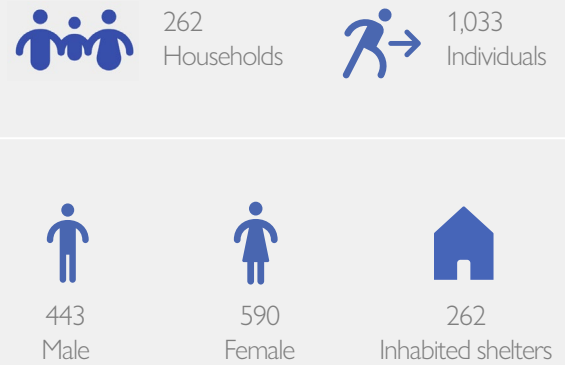
As of the end of November 2024, 2,970 individuals (719 households) were biometrically registered as active residents in the camp, reflecting a two per cent increase in registered individuals since January 2024 following the latest biometric registration maintenance in Malakal Fire Brigade.

Recognizing significant population changes since the last comprehensive biometric registration and verification, IOM DTM conducts periodic population counts to monitor population dynamics and displacement trends. These exercises indicate that the actual number of individuals currently residing in Malakal Fire Brigade is lower than the registered total.

### Period of arrival



### Key Figures

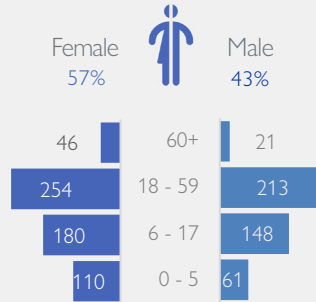


### Map of the Site

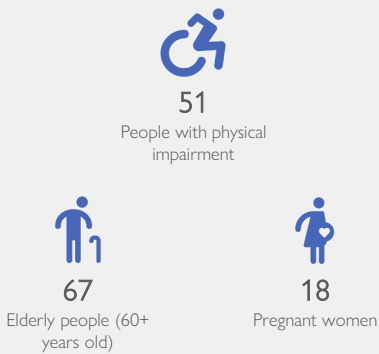


Data collection: November 2024

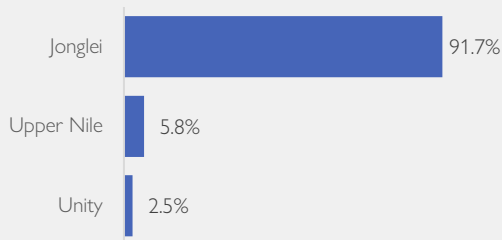
## Demographics



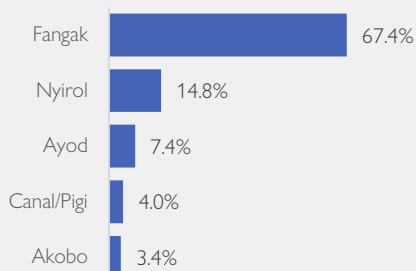
## Reported vulnerabilities



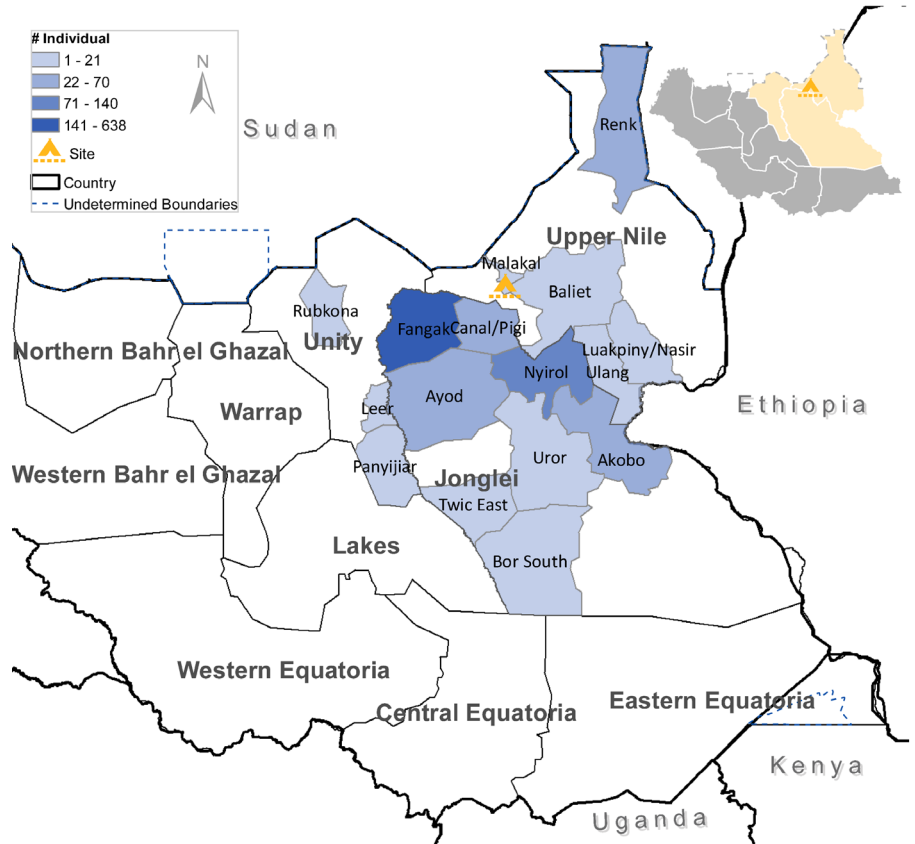
## State of initial displacement



## TOP 5 counties of initial displacement in Jonglei (91.7%)



## Map showing counties of displacement



*Disclaimer: This map is for illustration purposes only. Names and boundaries on this map do not imply official endorsement or acceptance by IOM.*

Registration activities are essential for IOM's Displacement Tracking Matrix (DTM) partners to create beneficiary lists, that facilitate effective resource allocation, vulnerability targeting, and aid delivery. The IOM DTM in South Sudan has been instrumental in providing biometric registration and headcounts, prioritizing immediate information needs essential for guiding direct assistance to vulnerable populations at the local level. Registration data is captured by DTM-led teams through direct individual interviews conducted in target locations, typically with the heads of households. This approach ensures that the data collected is accurate and representative of household needs.

According to the November 2024 population count, the Malakal Fire Brigade population comprises 1,033 individuals (262 households), averaging approximately four individuals per household. This marks a sixty-five per cent decrease compared to biometric registration figures.

The population decrease is primarily attributed to individuals returning to their habitual residences in Jonglei State.