



# EMERGENCY TRACKING TOOL (ETT)

DTM Emergency Tracking Tool (ETT) is deployed to track and provide up-to-date information on sudden displacement and other population movements

## ETT Report: No. 114 | 08 - 14 April 2019

### Movements



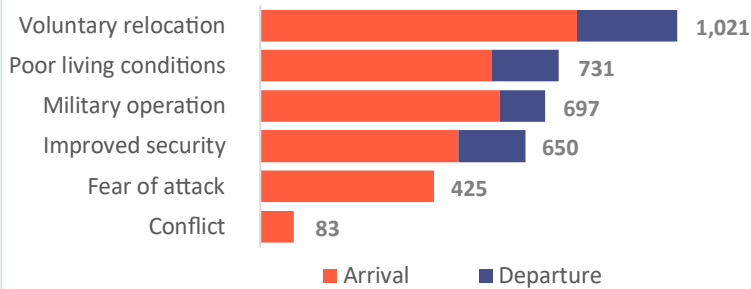
### New Arrival Screening by Nutrition Partners



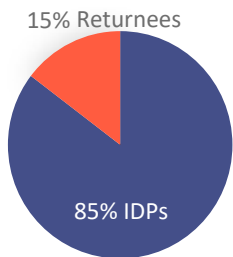
Within the period of 08 - 14 April 2019, a total of 3,607 movements were recorded, including 2,921 arrivals and 686 departures. Arrivals were recorded at locations in Askira/Uba, Bama, Chibok, Damboa, Dikwa, Gwoza, Jere, Kaga, Maiduguri, Mobbar, Monguno and Ngala Local Government Areas (LGAs) of Borno state and locations in Demsa, Fufore, Girei, Gombi, Hong, Lamurde, Madagali, Maiha, Mayo Belwa, Michika, Mubi North, Mubi South, Numan, Yola North and Yola South LGAs of Adamawa state. Departures were recorded at Askira/Uba and Kaga LGAs of Borno state, Fufore, Girei, Hong, Madagali, Maiha, Michika, Mubi North, Mubi South, Numan, Yola North and Yola South LGAs of Adamawa state.

ETT assessments identified the following movement triggers: voluntary relocation (29%), improved security (18%), fear of attack (12%), ongoing conflict (2%), military operation (19%) and poor living conditions (20%).

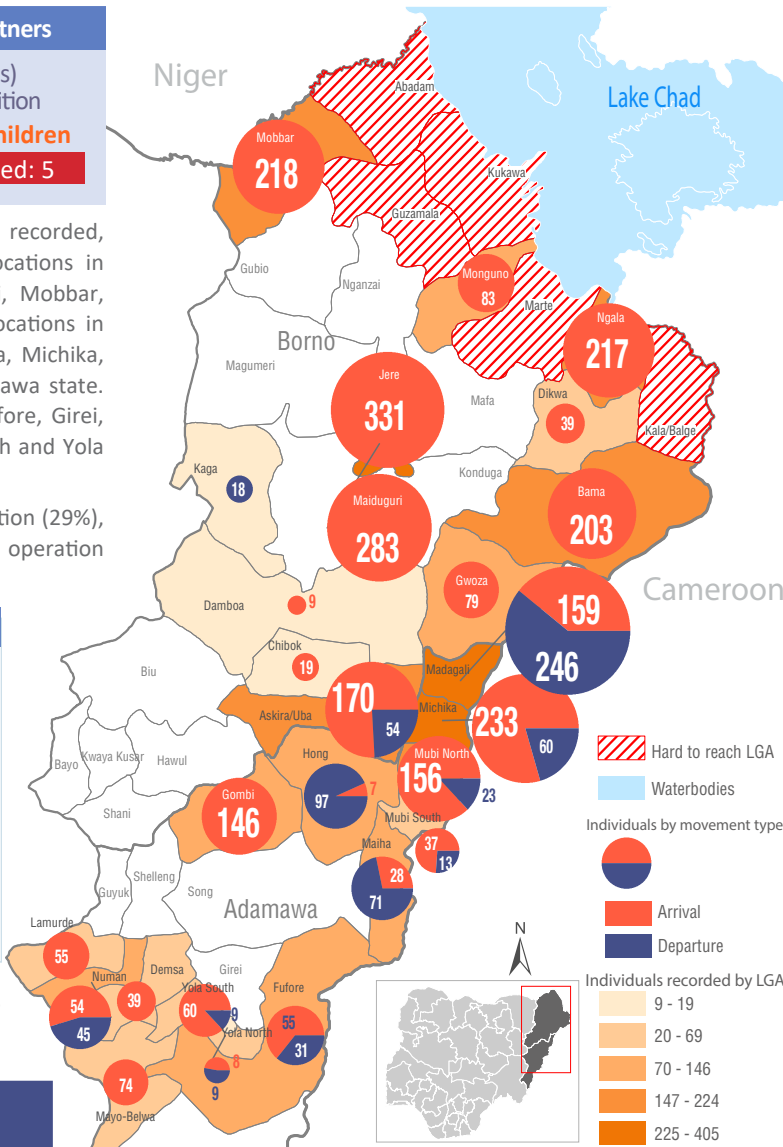
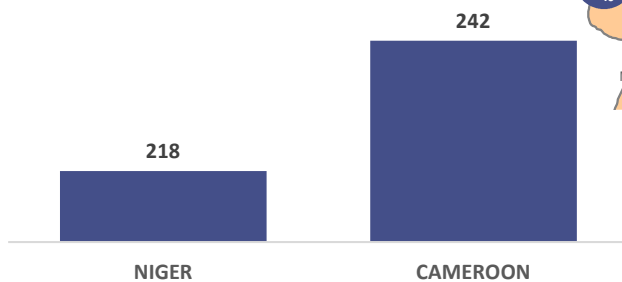
### Number of individuals by movement triggers



### Affected population



### Arrivals from Neighbouring Countries



### Summary of major movements

**Madagali:** 159 arrivals and 246 departures were recorded in Madagali LGA of Adamawa state. These include 18 arrivals from Uba ward of Hong LGA and 105 arrivals from Duhu/Shuwa ward of Madagali LGA tracked at K/Wuro Ngayandi ward of Madagali LGA. 36 arrivals from K/Wuro Ngayandi ward of Madagali LGA were also tracked at Duhu/Shuwa ward of Madagali LGA of Adamawa state. Departures include 41 from Uba ward of Askira/Uba LGA of Borno state, 153 departures from Modire/Vinikilang ward of Girei LGA, 21 departures from Namtari ward of Yola South LGA and 31 departures from Gulak and K/Wuro Ngayandi wards of Madagali LGA tracked at Duhu/Shuwa ward of Madagali LGA of Adamawa state. 69% of the new arrivals reported to have relocated due to improved security, 13% due to poor living conditions and 23% due to fear of attack. 76% of the departure was due to fear of attack, 13% due to improved security while 12% was due to poor living conditions.

**Jere:** 331 arrivals were recorded in Jere LGA of Borno state. These include 242 arrivals from Baga ward of Kukawa LGA and 89 arrivals from Rann ward of Kala-Balge LGA of Borno state. The new arrivals reported to have relocated due to the ongoing conflict

**Michika:** 233 arrivals and 60 departures were recorded in Michika LGA of Adamawa state. These include 36 arrivals from Gombi south ward of Gombi LGA, 39 arrivals from Betso ward of Mubi North LGA, 21 arrivals from Bole Yolde Pate ward of Yola South, 66 arrivals from Tumarangabuli ward of Michika LGA tracked at Michika 2 ward of Michika LGA and 71 arrivals from Vi-Boka ward of Michika LGA tracked at Miniski Wuro Ngiki ward of Michika LGA of Adamawa state. Departures include 23 from Girei 1 ward of Girei LGA, 17 departures from Ribadu ward of Fufore LGA, 12 departures from Nasarawa ward of Mubi south LGA and 8 departures from Karewa ward of Yola North LGA of Adamawa state. The new arrivals reported to have relocated due to improved security while the departures were triggered by fear of attack.

IOM's Emergency Tracking Tool (ETT) is deployed in Nigeria's northeastern states. Only Local Government Areas (LGAs) in which the IDP population changed since the latest DTM round of assessments are represented in this report. The data has been collected by DTM staff deployed at the locations listed and cross-checked with the partners present on the ground.

## New Arrival Malnutrition Screening Summary (children 6-59 months)

An exhaustive nutrition screening using mid-upper arm circumference (MUAC) and Oedema for acute malnutrition was conducted by Nutrition Sector partners for 209 children of 6-59 months. Of the 209 children screened, the MUAC reading was: 5 children (2 from Inaccessible and 3 from accessible area) were in the Red category, 12 were in the Yellow category and 192 were measured in the Green category. No case of Oedema was reported in the 6 LGAs that sent in reports.

The results also include 90 children from neighbouring Cameroon and Niger (35 moved to Bama, 1 to Gwoza, 32 to Mobbar and 22 to Ngala). Out of the 90 children measured, 1 child was in the red category, 82 were in the green category and 7 children were in the yellow category. All children found with severe acute malnutrition have been admitted for treatment. The data presented is not surveillance results and should be interpreted with caution.

LGA	MUAC Categories						Total
	Green (≥12.5cm)		Yellow (11.5 cm - 12.5cm)		Red (<11.5cm)		
	In-Accessible	Accessible	In-Accessible	Accessible	In-Accessible	Accessible	
Bama	10	58	0	4	1	1	74
Dikwa	2	8	0	0	0	1	11
Gwoza	7	11	0	0	1	0	19
Mobbar	0	28	0	4	0	0	32
Monguno	0	12	0	2	0	0	14
Ngala	0	56	0	2	0	1	59
<b>Total</b>	<b>19</b>	<b>173</b>	<b>0</b>	<b>12</b>	<b>2</b>	<b>3</b>	<b>209</b>

■ Nourished

■ Moderate Acute Malnutrition (MAM)

■ Severe Acute Malnutrition (SAM)

**Table 1. Details of movements by locations of assessment and locations of arrival/departure** - only movements with at least 28 persons are listed below

Tracking location			Movement location					
STATE	LGA	WARD	STATE	LGA	WARD	ARRIVAL	DEPARTURE	
ADAMAWA	DEMSA	NASARAWO		MUBI SOUTH	LAMURDE	28	-	
	GIREI	FUFORE	ADAMAWA	MICHIKA	MICHIKA 1	52	-	
		MODIRE-VINIKLANG		MADAGALI	DUHU/SHUWA	65	-	
	GOMBI	GOMBI SOUTH	ADAMAWA	MADAGALI	K/WURO GAYANDI	51	-	
		TAWA	BORNO	ASKIRA/UBA	KOPA/MULTHFU	41	-	
	HONG	UBA	ADAMAWA	HONG	UBA	29	-	
			BORNO	GOMBI	TAWA	-	29	
	LAMURDE	GYAWANA	ADAMAWA	BORNO	ASKIRA/UBA	DILLE/HUYIM	-	32
			ADAMAWA	NUMAN	INBURU	-	28	
	MADAGALI	DUHU/SHUWA	ADAMAWA	GIREI	MODIRE/VINIKILANG	-	29	
		GULAK	BORNO	ASKIRA/UBA	UBA	-	41	
		K/WURO NGAYANDI	ADAMAWA	GIREI	MODIRE/VINIKILANG	-	124	
	MAYO BELWA	MAYO BELWA	ADAMAWA	MADAGALI	DUHU/SHUWA	105	-	
	MICHIKA	GARTA	ADAMAWA	MUBI NORTH	BESTO	39	-	
				GOMBI	GOMBI SOUTH	36	-	
				MICHIKA	TUMBARANGABULI	66	-	
	MUBI NORTH	DIGIL	ADAMAWA	MICHIKA	VI-BOKA	71	-	
				MADAGALI	WURO GYANDI	124	-	
NUMAN	INBURU	ADAMAWA	LAMURDE	GYAWANA	28	-		
BORNO	ASKIRA/UBA	DILLE/HUYIM	ADAMAWA	HONG	UBA	32	-	
		LASSA	ADAMAWA	GOMBI	GOMBI SOUTH	-	48	
		MUSSA	BORNO	ASKIRA/UBA	CHULL/RUMIRGO	59	-	
		UBA	ADAMAWA	MADAGALI	GULAK	41	-	
	BAMA	BUDUWA	CAMEROON	MARWA	MOKOLO	90	-	
					BUDUWA	48	-	
	JERE	OLD MAIDUGURI	BORNO	KALA-BALGE	RANN	89	-	
				KUKAWA	BAGA	242	-	
	MAIDUGURI	MAFONI	BORNO	ABADAM	JABULLAM	56	-	
	MOBBAR	DAMASAK CENTRAL	NIGER	KONDUGA	SOJIRI	222	-	
DIFFA				SHETTIMARI	218	-		
MONGUNO	MONGUNO	BORNO	KUKAWA	KUKAWA	83	-		
NGALA	NGALA	BORNO	KALA-BALGE	RANN	120	-		
		CAMEROON	MARWA	MAKARI	38	-		
				ZIGAGE	59	-		

The depiction and use of boundaries, geographic names, and related data shown on maps and included in this report are not warranted to be error free nor do they imply judgment on the legal status of any territory, or any endorsement or acceptance of such boundaries by IOM.

For more information or to report an alert, please contact:

Henry Kwenin, DTM Project Coordinator: [hkwenin@iom.int](mailto:hkwenin@iom.int) | +234 9038852524    Bercasio Dave, Emergency Coordinator: [dbercasio@iom.int](mailto:dbercasio@iom.int) | +234 9075070001    DTM information products: <http://nigeria.iom.int/dtm>